

Great schools. Great community.

**BOND**

**2017**

**Spring Branch ISD**



# Spring Branch ISD 2017 Bond Program

## 2017 Bond Program Bond Oversight Committee (BOC)

November 11<sup>th</sup>, 2020

### Agenda

- Introductions
- Finance Updates
- Technology Updates
- Planning & Construction Updates
- Questions from the BOC

Great schools. Great community.

**BOND**

**2017**

Spring Branch ISD

# Spring Branch ISD 2017 Bond Program

## Introductions:

### District Staff

Dr. Jennifer Blaine, Superintendent of Schools  
[Jennifer.Blaine@springbranchisd.com](mailto:Jennifer.Blaine@springbranchisd.com)

Christine Porter, Associate Superintendent for Finance  
[Christine.Porter@springbranchisd.com](mailto:Christine.Porter@springbranchisd.com)

Christina Masick, Associate Superintendent for Technology  
[Christina.Masick@springbranchisd.com](mailto:Christina.Masick@springbranchisd.com)

Stephen Johnston, Technology Manager of Bond Projects  
[Stephen.Johnston@springbranchisd.com](mailto:Stephen.Johnston@springbranchisd.com)

Kristin Craft, Associate Superintendent for Academic Performance & Support  
[Kristin.Craft@springbranchisd.com](mailto:Kristin.Craft@springbranchisd.com)

Travis Stanford, Associate Superintendent for Operations  
[Travis.Stanford@springbranchisd.com](mailto:Travis.Stanford@springbranchisd.com)

### BOC Co-Chairs

Lewis Gissel - [lgissel3@gmail.com](mailto:lgissel3@gmail.com)  
Kathy Goss - [johnngoss4@aol.com](mailto:johnngoss4@aol.com)



# Spring Branch ISD 2017 Bond Program

## Finance Updates:

### Expenditures

|                              |                |
|------------------------------|----------------|
| July – September 2020        | \$ 45,291,272  |
| April – June 2020            | \$ 51,735,757  |
| Inception through Sept. 2020 | \$ 160,593,094 |

### Interest Earnings

|                              |              |
|------------------------------|--------------|
| July – September 2020        | \$ 945,340   |
| April – June 2020            | \$ 1,232,988 |
| Inception through Sept. 2020 | \$ 9,203,155 |

### Issuance

|                                    |                |
|------------------------------------|----------------|
| Issued June 2018                   | \$ 146,000,000 |
| Issued October 2019                | \$ 255,000,000 |
| Issuance November 2020             | \$ 169,000,000 |
| Authorized but Unissued - 10/31/20 | \$ 328,400,000 |

Great schools. Great community.

**BOND**

**2017**

Spring Branch ISD



# Spring Branch ISD 2017 Bond Program

## Finance Updates:

### Recap of Series 2020 Bond Sale

The third bond sale will provide \$169 million for construction projects.

The bond sale was at a **true interest cost to the district of 1.82%**

|             |               |       |
|-------------|---------------|-------|
| Series 2018 | \$146,000,000 | 3.67% |
| Series 2019 | \$255,000,000 | 2.52% |
| Series 2020 | \$169,000,000 | 1.82% |

Bond ratings were affirmed at "Aa1" and "AA" by Moody's and S&P

Bond ratings were "Aaa" and "AAA" with the Texas PSF guarantee



# Spring Branch ISD 2017 Bond Program

## Technology Updates:

### Four Major Project Areas

- Lifecycle Refresh
- Safety & Security
- Network and Infrastructure Lifecycle Replacements
- Technology

Great schools. Great community.

**BOND**

**2017**

Spring Branch ISD

# Spring Branch ISD 2017 Bond Program

## Technology Updates:

### Lifecycle Refresh - Student

- Elementary
  - Deployed 12,676 devices to students for SY2020-2021
  - Yearly Process
    - Schools receive student device allotment – January
    - Student device request process opens – February
    - Device requests close - May
    - New devices in classrooms before start of school –August
- Spring 2021 – One-year change to process
  - Operation Connectivity – Collaboration between TEA and Region 4 to bridge the digital divide
    - TEA and Harris County will now pay 100% of the cost of devices
    - 5,000 hotspots – Delivered to secondary and elementary campuses in September
    - 9,300 iPads – Delivered to elementary campuses in October
    - 7,500 Chromebooks – Goal to deliver to elementary campuses by end of December
      - Largest deployment from start-to-finish for SBISD

Great schools. Great community.

**BOND**

**2017**

Spring Branch ISD

# Spring Branch ISD 2017 Bond Program

## Technology Updates:

### Lifecycle Refresh – Student (continued)

- Secondary
  - Deployed 15,531 devices to students for SY2020-2021
  - Replaced HS Journalism Computers
    - Mixture of iMacs (125) and MacBook's with monitors (60) to accommodate virtual learning
    - MHS, NHS, SHS, SWH
- Adult Devices
  - Target out-of-warranty (>5 years) devices
  - Instructional and Non-Instructional Staff
    - Replaced approximately 3,000 computers to date
    - Intentionally targeting high schools to support floating teachers
  - Goal is 100% of devices less than 5 years old
  - To support virtual learning and business continuity, approximately 400 laptops were deployed to employees who would traditionally use a desktop



# Spring Branch ISD 2017 Bond Program

## Technology Updates:

### Safety & Security

- Extended Network Availability
  - Phase 1 Feasibility Study – Completed Fall 2018
  - Phase 2 Pilot – LTE Network
    - Next Steps – Run fiber and install equipment
  - Other Extended Network Options
    - Wi-Fi enabled busses deployed at 5 elementary locations and 10 community partners for SY21
    - Outdoor access points to cover to district property lines
      - All PreK Centers and Secondary Campuses

Great schools. Great community.

**BOND**

**2017**

Spring Branch ISD

# Spring Branch ISD 2017 Bond Program

## Technology Updates:

### Infrastructure

- Interactive Projector Updates
  - Updated Educational Specifications – December 2019
    - Activpanels in all existing classrooms to bring up to district standards
    - Brightlink projector with writable wall surface in new buildings
  - Activboard Replacement Project – June 2020 – January 2021
    - Completed
      - BBS, EWE, HBE, HME, LLS, MWE, NHE, PPS, PSE, SBE, SOE, SOM, SSE, SWE, SWM, SWH, TCE, TWE, WCE, WVE, WWE, WWS
    - November installations
      - BND, MMS, NHS, NMS, RGE, SBM, SHS
    - December installations
      - DAEP, MHS
    - January installations
      - SFM, WAIS

Great schools. Great community.

**BOND**

**2017**

Spring Branch ISD

# Spring Branch ISD 2017 Bond Program

## Technology Updates:

### Infrastructure and Other Technology Projects

- Storage Refresh – Completed October 2020
  - Multi-level, multi-site online and offline daily backups (e.g. “Air Gap”)
  - Geographical diversity
- Future Projects
  - Multiple RFPs under Code of Silence
    - Wired and Wireless
    - Planning in SY2021 for implementation in SY2022
      - Goal to move all indoor spaces from AC to most advanced standard WiFi6
      - Expand coverage to include all Elementary outdoor spaces property line-to-property line
  - Streaming Capabilities for Campuses – SY2022
    - Encoders purchased for each school

# Spring Branch ISD 2017 Bond Program

## Planning & Construction Updates:

**School:** Pre-K Centers, Tiger Trail & Wildcat Way

**Scope of Work:** Chiller Replacement & Courtyard Lighting Project

**Project Manager:** Kris Drosche

**Architect/Engineer:** Johnston, LLC - **Contractor:** CA Walker

**Status:** Project is completed.

Great schools. Great community.

**BOND**

**2017**

Spring Branch ISD



# Spring Branch ISD 2017 Bond Program

## Planning & Construction Updates:

School: Pre-K Centers, Tiger Trail & Wildcat Way



Tiger Trails – New courtyard lighting



Wildcat Way - New chillers and piping

Great schools. Great community.

# BOND

## 2017

Spring Branch ISD

# Spring Branch ISD 2017 Bond Program

## Planning & Construction Updates:

**School:** Buffalo Creek ES

**Scope of Work:** Renovation Project

**Project Manager:** Kris Drosche

**Architect/Engineer:** Huckabee & Associates, Inc. - **Contractor:** Division One Construction

**Status:** Project is currently in Construction Phase.

Great schools. Great community.

**BOND**

**2017**

Spring Branch ISD

# Spring Branch ISD 2017 Bond Program

## Planning & Construction Updates:

School: Buffalo Creek ES



New graphics in main lobby



New furniture installed in Library



# Spring Branch ISD 2017 Bond Program

## Planning & Construction Updates:

School: Buffalo Creek ES



New collaboration area - new lighting, clerestory and paint

Great schools. Great community.

**BOND**

**2017**

Spring Branch ISD



# Spring Branch ISD 2017 Bond Program

## Planning & Construction Updates:

**School:** Treasure Forest ES

**Scope of Work:** Renovation Project

**Project Manager:** Kris Drosche

**Architect/Engineer:** Huckabee & Associates, Inc. - **Contractor:** Division One Construction

**Status:** Project is currently in Construction Phase.

Great schools. Great community.

**BOND**

**2017**

Spring Branch ISD

Spring Branch ISD

# Spring Branch ISD 2017 Bond Program

## Planning & Construction Updates:

School: Treasure Forest ES



New Library with functioning skylight

Great schools. Great community.

# BOND

## 2017

Spring Branch ISD



# Spring Branch ISD 2017 Bond Program

## Planning & Construction Updates:

School: Treasure Forest ES



New collaboration area - new lighting, clerestory and paint

Great schools. Great community.

# BOND

## 2017

Spring Branch ISD



# Spring Branch ISD 2017 Bond Program

## Planning & Construction Updates:

School: Treasure Forest ES



New collaboration area - new lighting, clerestory and paint

Great schools. Great community.

# BOND

## 2017

Spring Branch ISD

# Spring Branch ISD 2017 Bond Program

## Planning & Construction Updates:

**School:** Bunker Hill ES

**Scope of Work:** New Construction/Replacement Campus

**Project Manager:** Kris Drosche & Noel Moreno

**Architect/Engineer:** Stantec Architects - **Contractor:** Durotech

**Status:** Project is currently in the Design Phase.

Great schools. Great community.

**BOND**

**2017**

Spring Branch ISD

# Spring Branch ISD 2017 Bond Program

## Planning & Construction Updates:

School: Bunker Hill ES



Aerial 3D view campus

Great schools. Great community.

# BOND

## 2017

Spring Branch ISD

# Spring Branch ISD 2017 Bond Program

## Planning & Construction Updates:

**School:** Cedar Brook ES

**Scope of Work:** Renovation Project and Classroom Addition

**Project Manager:** Max Buja

**Architect/Engineer:** Huckabee & Associates, Inc. - **Contractor:** Satterfield & Pontikes

**Status:** Project is currently in Construction Phase.

Great schools. Great community.

**BOND**

**2017**

Spring Branch ISD



# Spring Branch ISD 2017 Bond Program

## Planning & Construction Updates:

School: Cedar Brook ES



New Library with functioning skylight

Great schools. Great community.

**BOND**

**2017**

Spring Branch ISD

# Spring Branch ISD 2017 Bond Program

## Planning & Construction Updates:

School: Cedar Brook ES



New collaboration area - new lighting, clerestory and paint

Great schools. Great community.

# BOND

## 2017

Spring Branch ISD



# Spring Branch ISD 2017 Bond Program

## Planning & Construction Updates:

School: Cedar Brook ES



New collaboration area - new lighting, clerestory and paint

Great schools. Great community.

**BOND**  
**2017**  
Spring Branch ISD

# Spring Branch ISD 2017 Bond Program

## Planning & Construction Updates:

**School:** Hunters Creek ES

**Scope of Work:** New Construction/Replacement Campus

**Project Manager:** Kris Drosche, Noel Moreno & Travis Stanford

**Architect/Engineer:** Pfluger Associates, L.P. - **Contractor:** Brookstone

**Status:** Project is currently in Construction Phase.

Great schools. Great community.

**BOND**

**2017**

Spring Branch ISD



# Spring Branch ISD 2017 Bond Program

## Planning & Construction Updates:

School: Hunters Creek ES



Exterior building progress



Great schools. Great community.

# BOND

## 2017

Spring Branch ISD

# Spring Branch ISD 2017 Bond Program

## Planning & Construction Updates:

School: Hunters Creek ES



Interior building progress



Dining area and stage progress

Great schools. Great community.

# BOND

## 2017

Spring Branch ISD

# Spring Branch ISD 2017 Bond Program

## Planning & Construction Updates:

**School:** Nottingham ES

**Scope of Work:** New Construction/Replacement Campus

**Project Manager:** Noel Moreno & Kris Drosche

**Architect/Engineer:** PBK Architects - **Contractor:** TBD

**Status:** Project is currently in Design Phase.

Great schools. Great community.

**BOND**

**2017**

Spring Branch ISD



# Spring Branch ISD 2017 Bond Program

## Planning & Construction Updates:

### School: Nottingham ES

Nottingham ES will be the third school out of nine elementary school replacement projects in the 2017 Bond Program. The new school will be built on-site adjacent to the existing school. The students and staff will remain onsite during the replacement project.



# Spring Branch ISD 2017 Bond Program

## Planning & Construction Updates:

**School:** Landrum MS

**Scope of Work:** New Construction/Replacement Campus

**Project Manager:** Kris Drosche & Travis Stanford

**Architect/Engineer:** Stantec Architects - **Contractor:** Durotech

**Status:** Project is currently in Construction Phase.

Great schools. Great community.

**BOND**

**2017**

Spring Branch ISD



# Spring Branch ISD 2017 Bond Program

## Planning & Construction Updates:

School: Landrum MS



November 9, 2020 aerial photos



# Spring Branch ISD 2017 Bond Program

## Planning & Construction Updates:

School: Landrum MS



Front Classrooms (south side)



Gym/locker rooms (northeast)

# Spring Branch ISD 2017 Bond Program

## Planning & Construction Updates:

School: Landrum MS



Learning courtyard



Sky bridge (second floor)

Great schools. Great community.

# BOND

## 2017

Spring Branch ISD



# Spring Branch ISD 2017 Bond Program

## Planning & Construction Updates:

**School:** Spring Forest MS

**Scope of Work:** Renovation Project

**Project Manager:** Noel Moreno

**Architect/Engineer:** IBI Group - **Contractor:** Purcell

**Status:** Project is currently in Construction Phase.

Great schools. Great community.

**BOND**

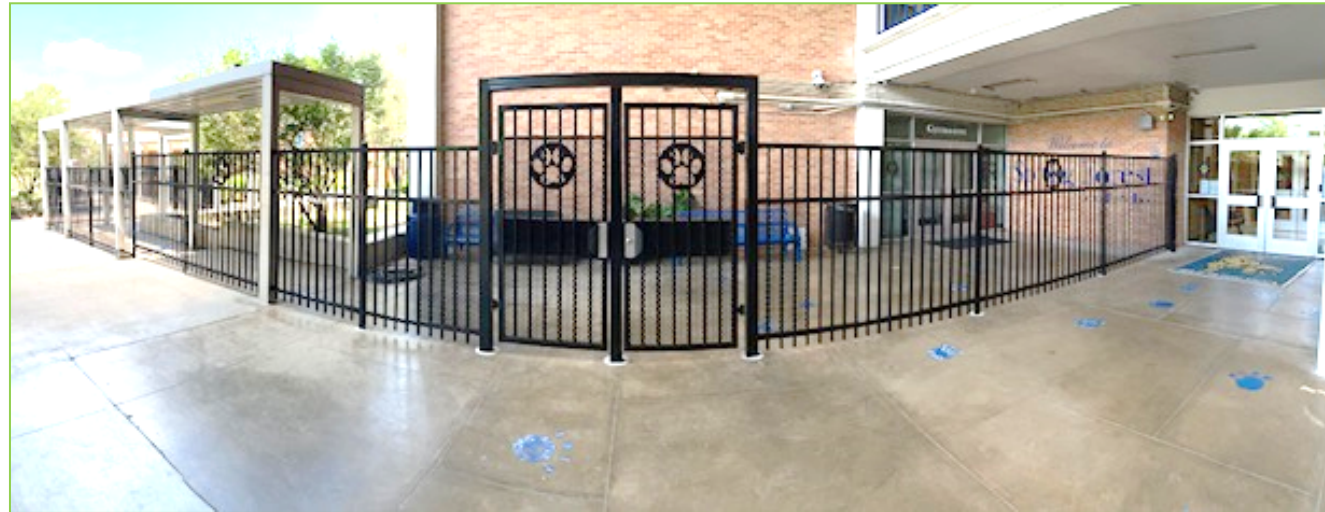
**2017**

Spring Branch ISD

# Spring Branch ISD 2017 Bond Program

## Planning & Construction Updates:

School: Spring Forest MS



New front entrance iron gate

Great schools. Great community.

**BOND**

**2017**

Spring Branch ISD

# Spring Branch ISD 2017 Bond Program

## Planning & Construction Updates:

School: Spring Forest MS



New secure vestibule



New door & hardware

Great schools. Great community.

# BOND

## 2017

Spring Branch ISD

# Spring Branch ISD 2017 Bond Program

## Planning & Construction Updates:

**School:** Memorial HS

**Scope of Work:** Four Story Classroom Addition, System Upgrades and Renovation Project

**Project Manager:** Kris Drosche & Travis Stanford

**Architect/Engineer:** Stantec Architects - **Contractor:** Durotech

**Status:** Project is currently in Construction Phase.

Great schools. Great community.

**BOND**

**2017**

Spring Branch ISD



# Spring Branch ISD 2017 Bond Program

## Planning & Construction Updates:

School: Memorial HS



October 30, 2020 aerial photos



# Spring Branch ISD 2017 Bond Program

## Planning & Construction Updates:

School: Memorial HS



New four story building structure with the mechanical room on top

Great schools. Great community.

# BOND

## 2017

Spring Branch ISD

# Spring Branch ISD 2017 Bond Program

## Planning & Construction Updates:

**School:** Northbrook HS

**Scope of Work:** Classroom Additions and Renovation Project

**Project Manager:** Max Buja & Travis Stanford

**Architect/Engineer:** PBK Architects, Inc. - **Contractor:** Satterfield & Pontikes

**Status:** Project is currently in Construction Phase.

Great schools. Great community.

**BOND**

**2017**

Spring Branch ISD

# Spring Branch ISD 2017 Bond Program

## Planning & Construction Updates:

School: Northbrook HS



Detention progress (the pipes are 5'-0" in diameter)



# Spring Branch ISD 2017 Bond Program

## Planning & Construction Updates:

School: Northbrook HS



New addition site

Great schools. Great community.

# BOND

## 2017

Spring Branch ISD

# Spring Branch ISD 2017 Bond Program

## Planning & Construction Updates:

**School:** Spring Woods HS

**Scope of Work:** Major MEP Upgrades, Renovations to Library and Cafeteria

**Project Manager:** Kris Drosche & Max Buja

**Architect/Engineer:** PBK Architects, Inc. - **Contractor:** Satterfield & Pontikes

**Status:** Project is currently in Construction Phase.

Great schools. Great community.

**BOND**

**2017**

Spring Branch ISD



# Spring Branch ISD 2017 Bond Program

## Planning & Construction Updates:

School: Spring Woods HS

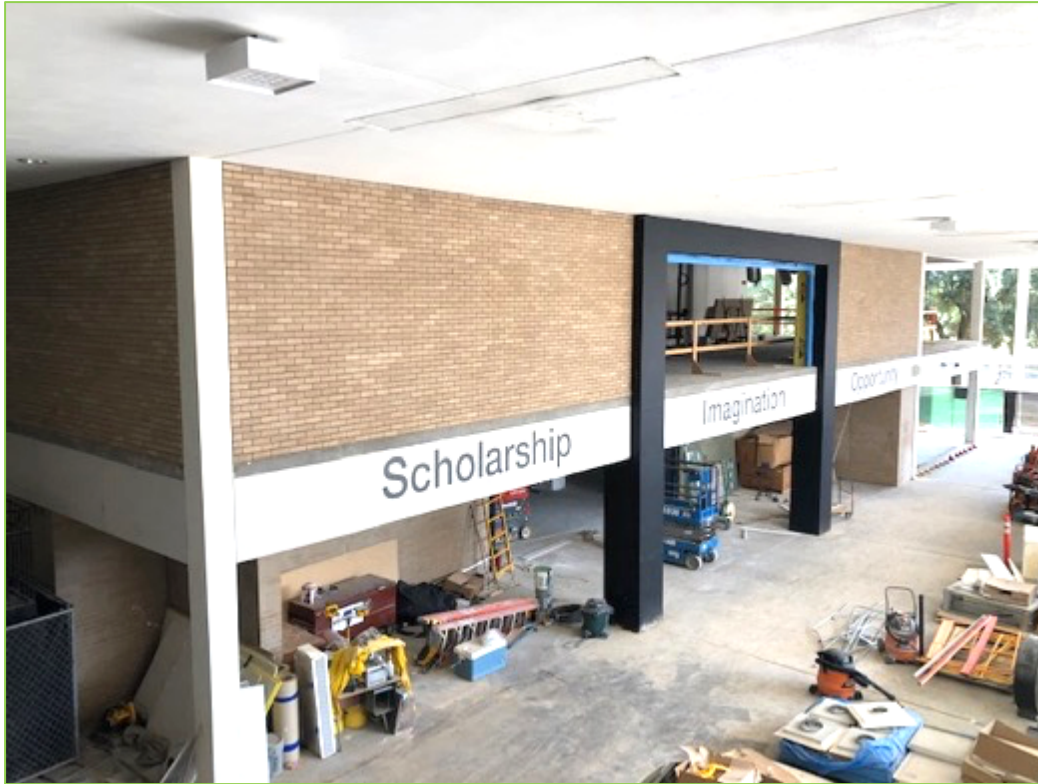


Renovated cafeteria with new graphics, terrazzo flooring and mechanical ductwork

# Spring Branch ISD 2017 Bond Program

## Planning & Construction Updates:

School: Spring Woods HS



West entry to Library



Front entry to Library

Great schools. Great community.

# BOND

## 2017

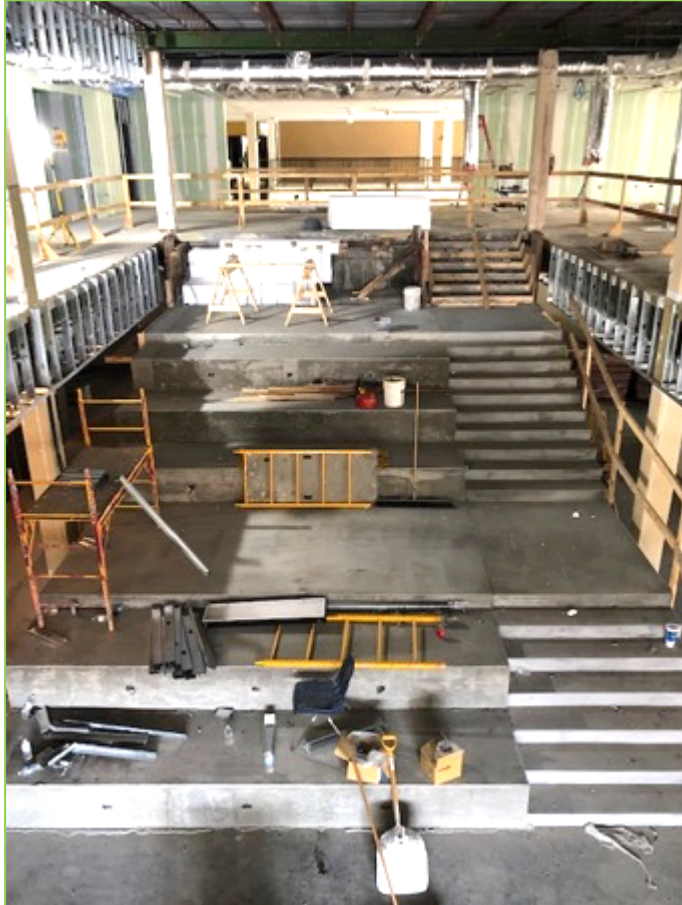
Spring Branch ISD



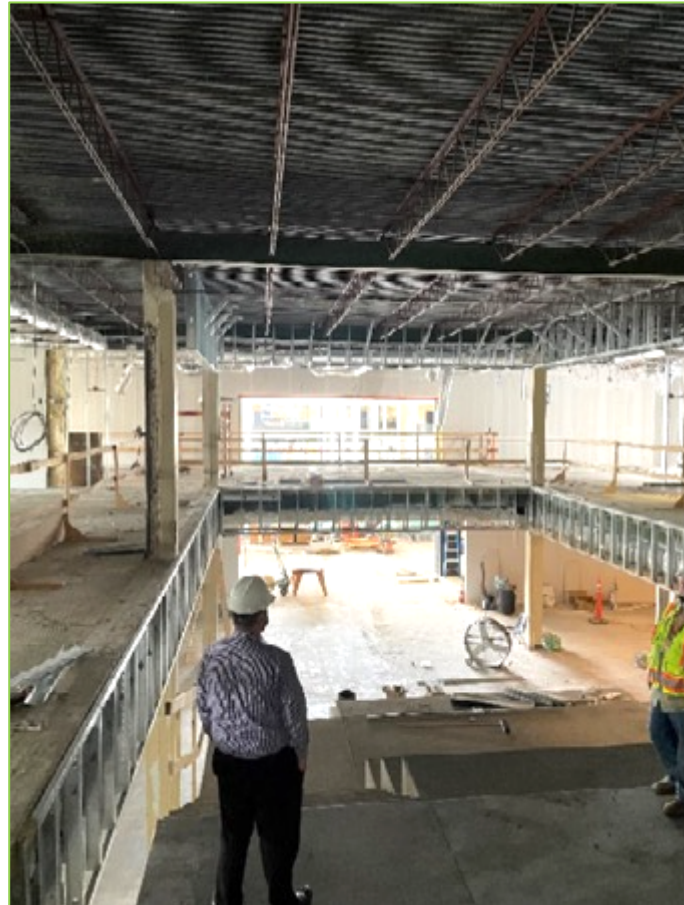
# Spring Branch ISD 2017 Bond Program

## Planning & Construction Updates:

School: Spring Woods HS



Learning stairs in the Library



Learning stairs looking toward the school stage area

Great schools. Great community.

# BOND

## 2017

Spring Branch ISD

# Spring Branch ISD 2017 Bond Program

## Planning & Construction Updates:

**School:** Stratford HS

**Scope of Work:** Renovation Project, Roof Replacement & New Auditorium

**Project Manager:** Max Buja & Travis Stanford

**Architect/Engineer:** PBK Architects, Inc. - **Contractor:** Satterfield & Pontikes

**Status:** Project is currently in Construction Phase.

Great schools. Great community.

**BOND**

**2017**

Spring Branch ISD



# Spring Branch ISD 2017 Bond Program

## Planning & Construction Updates:

School: Stratford HS



View of the west side of the auditorium



View looking North toward the lobby area

Great schools. Great community.

# BOND

## 2017

Spring Branch ISD

# Spring Branch ISD 2017 Bond Program

## Planning & Construction Updates:

School: Stratford HS



View of the stage front from back of the auditorium



View looking down on the front of stage area

# Spring Branch ISD 2017 Bond Program

## Planning & Construction Updates:

**School:** Gessner Complex Fuel Storage and Parking

**Scope of Work:** Replace the existing underground fuel storage system and additional parking

**Project Manager:** Kris Drosche

**Architect/Engineer:** Johnston LLC - **Contractor:** Bass

**Status:** This project is currently in Construction Phase.

Great schools. Great community.

**BOND**

**2017**

Spring Branch ISD



# Spring Branch ISD 2017 Bond Program

## Planning & Construction Updates:

School: Gessner Complex Fuel Storage and Parking







November 11, 2020

Spring Branch ISD  
Bunker Hill Elementary

# Spring Branch ISD Bond Oversight Committee CD Phase Update





## Meeting Agenda:

### 1. Introduction / Meeting Overview

**Project Schedule:** Current Update

**PAT Input:** Guiding Principles

### 2. Design Update: Review Current Status of BHE Design

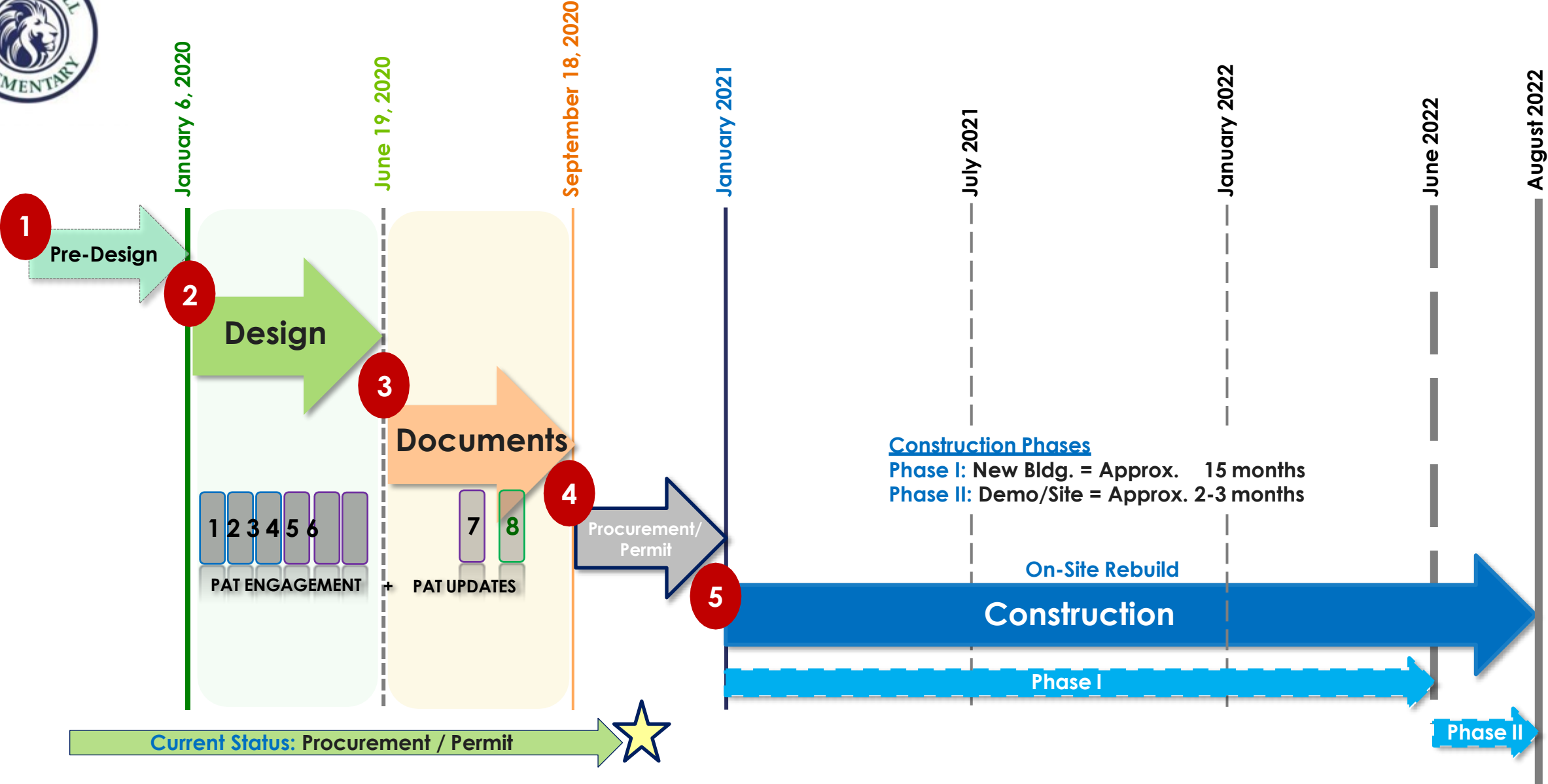
**Project Overview**

**BHE Design Plans:** Site Plan + Floor Plan

**BHE Design 3D Images:** Exterior + Interior

**BHE Design 3D Animation:** Exterior + Interior

### 3. Closing Remarks / Questions





## Bunker Hill ES | Guiding Principles

### Design Objectives from PAT:

- 1. Open and Welcoming feeling.**  
Inviting to and inclusive of the diverse community.
- 2. Embedded within Natural setting.**  
Connected with views and access to walkable neighborhood.
- 3. Student centered and Parent involved.**  
Celebrating excellence, achievement and tradition.
- 4. Flexible, Collaborative and Forward Thinking.**  
Responsive to Teaching and Learning objectives over time.

**NW Entry:**  
Parent  
Stacking  
+  
Pick-up  
Drop-off

Gate

Pedestrian

Parent Drop-off

Bikes

Service Yard

Cute

Back Entry

Classrooms

Covered Play

Dining Gym

Classrooms

Plaza Entry

Bikes

Play Fields

Classrooms

Learning Plaza

Library

Admin

Front Entry

Bus Drop-off

Visitor Parking

Visitor / Staff Parking

Monument Sign

Staff Parking

Playground

Gate

Pedestrian SE Entry:

Buses + Visitors

## 1. Perimeter Boundary / Security

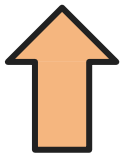
- Site Access** (Existing access points to campus remain as is)
- Site Fencing** (6ft at Perimeter + Learning Plaza, 4 Vehicle Access Gates)
- Building** (Main Front Entry, Back Secondary Entry)
- Service Yard** at North end of site

## 2. Traffic Flow

- Pedestrian Walks** (3 points of entry)
- Parent Drive/Drop-off** (NW corner from neighborhood)
- Bus Drive/Drop-off** (SE corner from Taylorcrest)
- Visitor Entry** (SE corner from Taylorcrest)
- Student Bike Racks** (100 near Gym + 30 at Parent Drop-off)

## Legend

- Vehicular Traffic
- Bus Traffic
- Pedestrian Route
- New Fencing
- Egress Door
- ← Site Ingress/Egress



North

Pedestrian

# BUNKER HILL ES - PROPOSED FLOOR PLANS

FL1 = 16 Classrooms

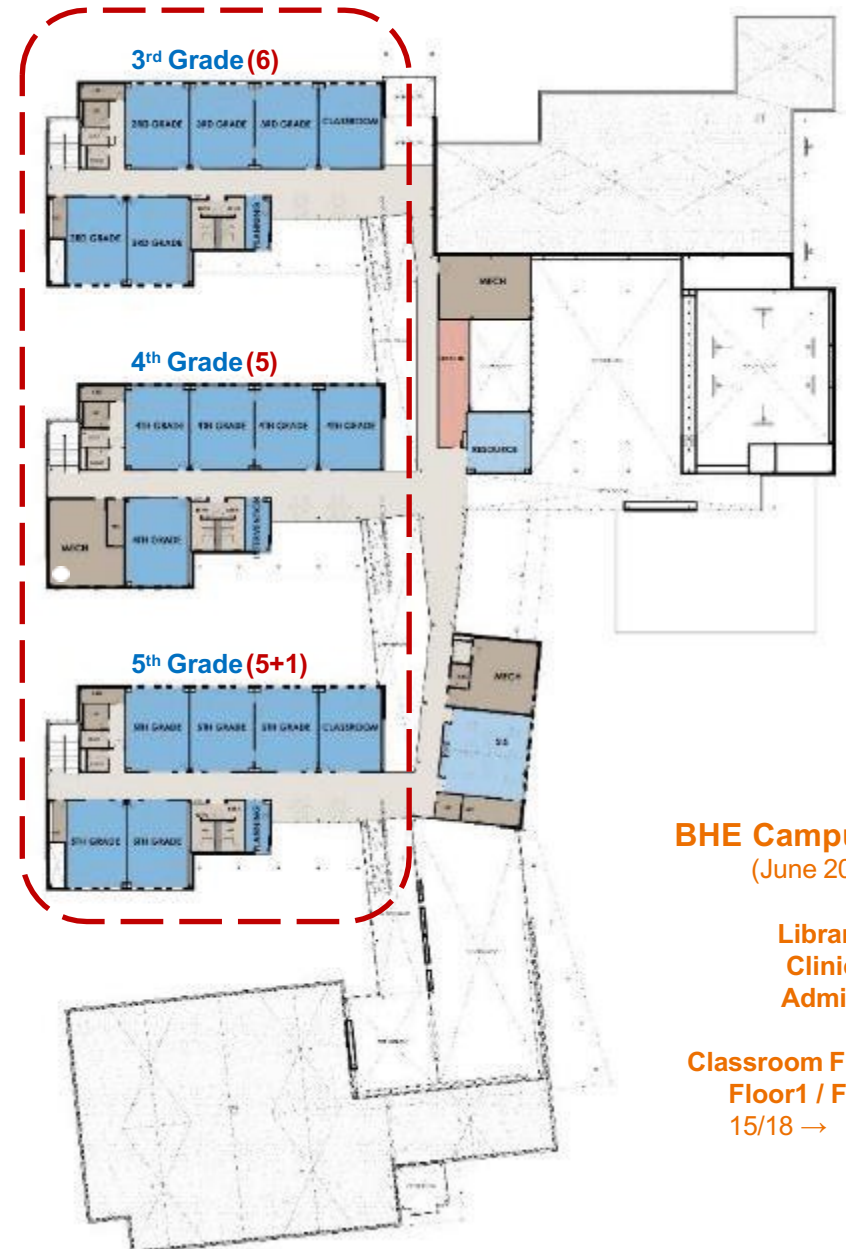


5 = Kindergarten  
 6 = 1<sup>st</sup> grade  
 5 = 2<sup>nd</sup> grade  
 6 = 3<sup>rd</sup> grade  
 5 = 4<sup>th</sup> grade  
 6 = 5<sup>th</sup> grade (5+1)  
**33 Classrooms Total**

## Legend

- Administration
- Media Center
- K-5<sup>th</sup>, SPED, Science
- Collaboration/Flex
- Dining Commons
- Gym / C. Play
- Art / Music
- Building Support
- Circulation

FL1 = 17 Classrooms



**BHE Campus Input**  
(June 2020)

Library  
Clinic  
Admin

**Classroom Flexibility**  
Floor1 / Floor2  
15/18 → 16/17



# Exterior 3D Images Quick Review







Aerial View



## View of Front of School

The scale/height of front entry blends with the neighborhood park like setting and preserves existing trees. Glass entry vestibule at front entry is clearly defined extending an inviting welcome to visitors.





## View from Bus Drop-off

The building height steps up in scale from the 1-story portion front entry to the 2-story portion set back from the main pedestrian path under the Bus Drop-off canopy that borders the Learning Plaza green space.





## View of East Bldg. Facade

The use of materials and window design of the Library sets it apart from the other building parts.

The Library is the academic heart and central architectural feature and directly connects to the Learning Plaza.





## View of Learning Plaza

The patio area provides an area for outdoor learning and space for parents when they visit their children and attend community activities on campus. The canopy provides shade and filters sunlight through the baffles.





## View at Gym Entrance

Art and Science has its own dedicated outdoor patio area with direct access to Learning Plaza. Students have direct access to the Bike Racks, Gym, Covered Play and extended activity zone.





## View at Parent Drop-off

Parent Drop-off entrance has smaller entry plaza and landscaping elements like the front entry.

The pedestrian plaza provides space for students in cars independent of the student walkers and bike riders..



## View at Parent Drop-off / West Facade of Classroom Wings

West façade of the 2-story Classroom Wings provides natural light into the classroom corridors at the stairwells while maintaining minimal views to the neighboring properties to the west.





## View at West Façade: Learning Communities / Courtyards

The view along the parent drive stacking lane is a rhythm of Classroom Wings and Learning Courtyards. Trees screen the building and there is limited amounts of glass on this side of the new school.



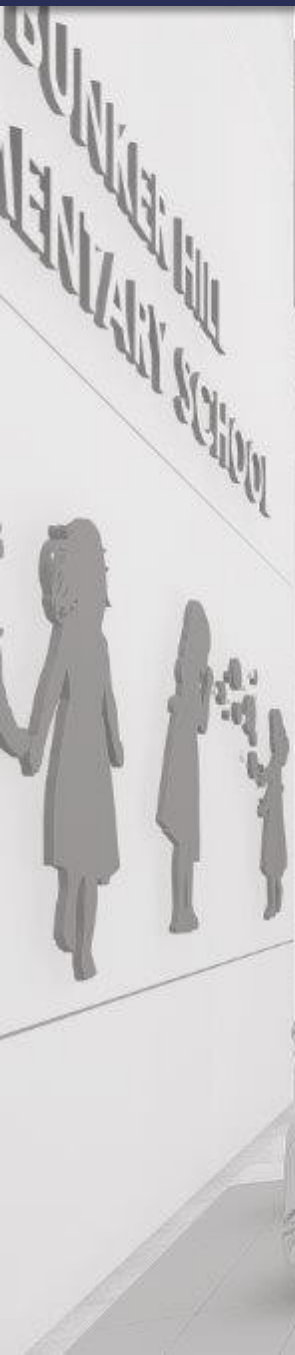


## View at Learning Community Courtyard

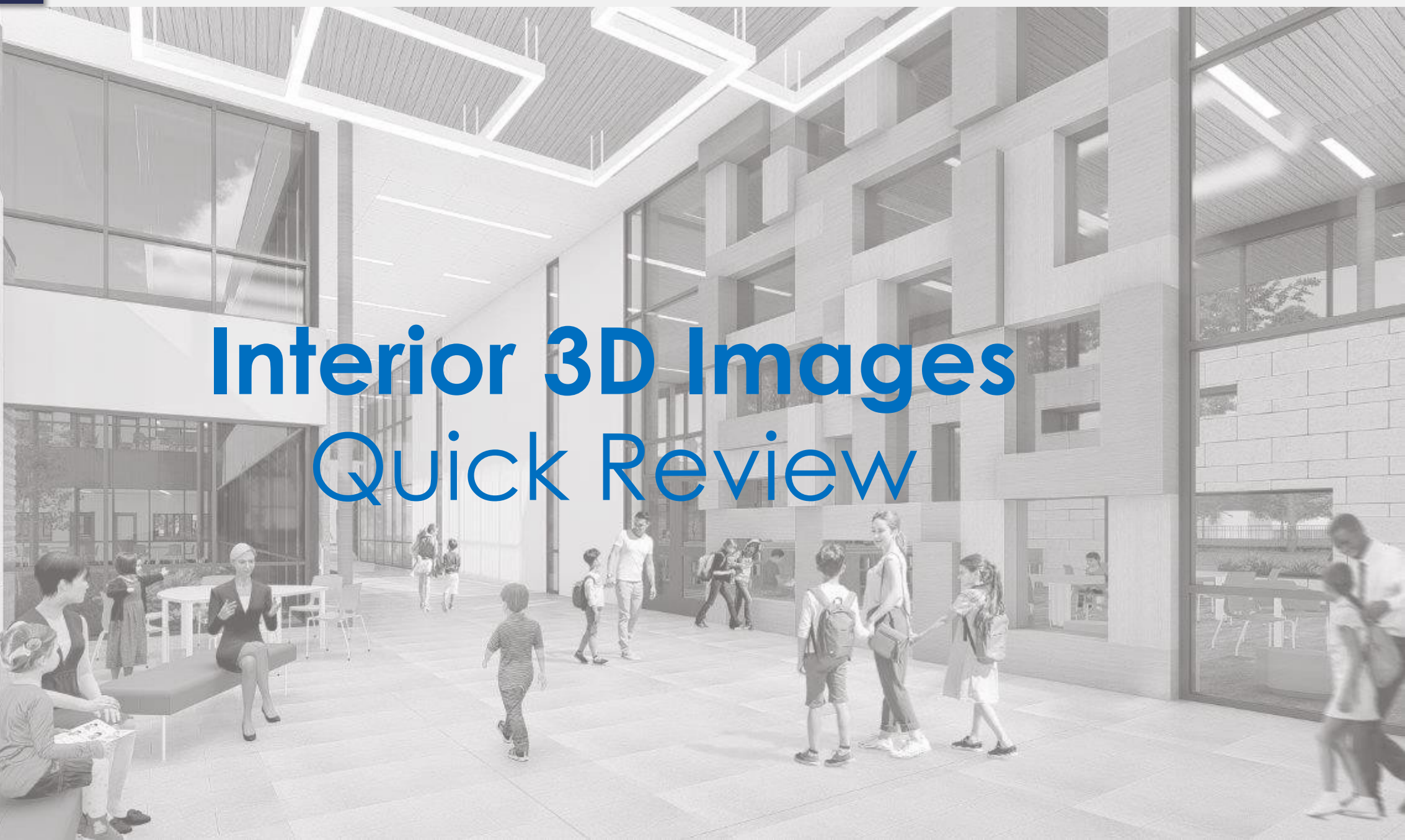
Outdoor Learning Community Courtyards have a combination of hardscape and landscape elements supporting a variety of activities (learning, socializing, connecting with nature) including a covered canopy area.







# Interior 3D Images Quick Review





## Lobby / Main Corridor

The School Lobby reinforces the school identity. The Main Corridor is filled with colors found in nature and provides immediate visual connection to the Library plus views to the Learning Community Courtyard.





## Library: View to Exterior

Interior finish colors and textures reflect the natural park like campus setting. The connection to the outdoor Learning Plaza is heightened by the large glass view and exterior stone wall with reading nooks.





## Library: View to Interior

Flexible furniture provides a variety of individual and group spaces within the Library. Large amount of glazing provides interior views to the 2-story Learning Community and outdoor Learning Courtyard beyond.





## Main Corridor at Learning Communities:

Students, teachers and parents are invited to flex zones and collaborative areas along the main circulation path with views to outdoor. Color is used as wayfinding for the 2-story grade level wings.





## Dining Commons + Stage

This multi-purpose area provides space for student dining and large group assembly acousticalsoftening at stage wall and ceiling areas.The Commons is directly connected to the outdoor Learning Plaza.





## Learning Community: Collaboration Space within Classroom Wing

Each Grade Level Classroom Wing has its own Collaboration Space near the Main Corridor for easy supervision. Floor 1 has direct access to courtyard. Floor 2 overlooks into the courtyard.





## Learning Community: Classroom View to Corridor

Classroom wall facing the corridor has large view windows for easy supervision of the collaboration space. Flexible student furniture and casework is consistent among grade level classrooms.





## Learning Community: Classroom View to Exterior

The presentation wall is located on the entry wall of each classroom. The furniture is flexible and easy to re-arrange for collaborative work. Classroom exterior wall has north/south view windows to the exterior.







# Spring Branch ISD 2017 Bond Program

## Questions from the Bond Oversight Committee



Great schools. Great community.

**BOND**

**2017**

Spring Branch ISD

# Spring Branch ISD 2017 Bond Program

Thank You

The next quarterly BOC meeting will be held:

**February 17<sup>th</sup>, 2021**

Dinner will be served at 5:30 pm

Meeting will began at 6:00 pm

Great schools. Great community.

**BOND**

**2017**

Spring Branch ISD