

An architectural rendering of a modern, multi-story building with a prominent glass facade and a steep, angular roofline. The building is surrounded by landscaped grounds with trees and a paved walkway. The text is overlaid on the central part of the image.

THE GUTHRIE CENTER

PAT MEETING #1: SETTING THE STAGE

January 11, 2023 : 4:00pm – 5:45pm

PRK

MEET THE TEAM!

WELCOME & INTRODUCTIONS

SBISD

Joe Kolenda

The Guthrie Center Principal

Nicole Henneke

CTE Coordinator

Christina Rice-Imumwen

Career and Technical Education Director

Lance Stallworth

Executive Director, Student Support Services

Dr. Kristin Craft

Associate Superintendent for Academics

Travis Stanford

Associate Superintendent for Operations

Geoff Bay

Project Manager

PBK ARCHITECTS

Brandon Ross

Partner

Melissa Turnbaugh

Partner

Richard Chi

Co-CEO

Daniel De La Garza

Principal / Senior Designer

TODAY'S AGENDA

We are so excited to start the Project Advisory Team (PAT) process with you!

1. PAT MEMBERS & CHARGE
2. 2017/2022 BOND PROGRAM
3. FACT FINDING
4. PROJECT OVERVIEW & PROCESS
5. SITE ANALYSIS
6. PAT ENGAGEMENT & VISIONING SESSION

1. PAT MEMBERS & CHARGE

2. 2017/2022 BOND PROGRAM

3. FACT FINDING

4. PROJECT OVERVIEW & PROCESS

5. SITE ANALYSIS

6. PAT ENGAGEMENT & VISIONING SESSION



MEET THE PROJECT ADVISORY TEAM (PAT)

28 MEMBERS

21 GUTHRIE STAFF/ PARENTS/ STUDENTS

- 1 Guthrie principal
- 1 Guthrie assistant principal
- 4 Guthrie staff members
- 5 Parents drawn by lottery
- 5 Home campus staff members
- 5 CTE students

3 DISTRICT REPRESENTATION

- 1 District guidance and counseling administrator
- 1 Director of Career and Technical Education
- 1 Representative from SBISD Technology Department

4 COMMUNITY REPRESENTATION

- 1 Representative from the Springwoods Civic Association
- 1 Representative from the Spring Branch Memorial Sports Association
- 2 CTE Business Advisory Council Members

PAT CHARGE

OVERVIEW

Project Advisory Teams (PAT) are essential participants in the planning and design process. The Guthrie PAT members are **charged with providing input into planning and design development for the facility's new construction project** under the 2022 Bond Program. The PAT will meet as needed throughout the project, from initial planning, through design to the start of construction. Team members are asked to agree to participate in various meetings throughout the process.

Meeting agendas and minutes will be posted on Guthrie's bond project website.

At the start of the project, representatives of the project architectural firm and the SBISD Project Manager will inform the PAT of the general project scope (new construction) and the proposed schedule of the work.



PAT CHARGE

CHARGE

The PAT will work collaboratively and cooperatively with the architect and SBISD Project Manager to conceptualize, develop and refine the project's goals and design.

The PAT will work with the architect and the SBISD Planning & Construction staff to ensure meeting the project's scope and schedule as defined by the 2022 Bond Program. The PAT will reach proposed recommendations through consensus.

Any concerns identified by the PAT members should immediately be brought to the attention of the SBISD Guthrie Project Manager.

The PAT will advise on recommendations regarding the interior and exterior appearance of the campus. Recommendations are subject to review and change by district administration. Recommendations will be presented by the project's architects to the Superintendent of Schools and based on approval from the Superintendent will then be presented to the Board of Trustees for their feedback. All recommendations must be in alignment with the District's Career and Technical Education Educational Specifications and Design and Construction Standards.

Areas of focus from which the PAT should refrain include recommendations regarding school and/or CTE programs, policies and procedures, boundaries of district facilities, instructional arrangements and/or educational pedagogy decided upon and/or subject to District, State and Federal laws.

Project Advisory Teams are essential participants in the planning and design process. Team members are asked to agree to participate in various meetings throughout the process.

WHY ARE WE HERE?

2022 BOND

Spring Branch Independent School District

“In Spring Branch ISD, providing world-class CTE experiences for EVERY CHILD is a priority. These programs provide our students with the knowledge, skills, and experiences they need to be future-ready, for both college AND a career. This bond proposal will provide improvements to the existing programs and learning spaces as well as give more students access to the exciting and enriching opportunities CTE provides.”

Dr. Jennifer Blaine, SBISD Superintendent of Schools



1. PAT MEMBERS & CHARGE

2. 2017/2022 BOND PROGRAM

3. FACT FINDING

4. PROJECT OVERVIEW

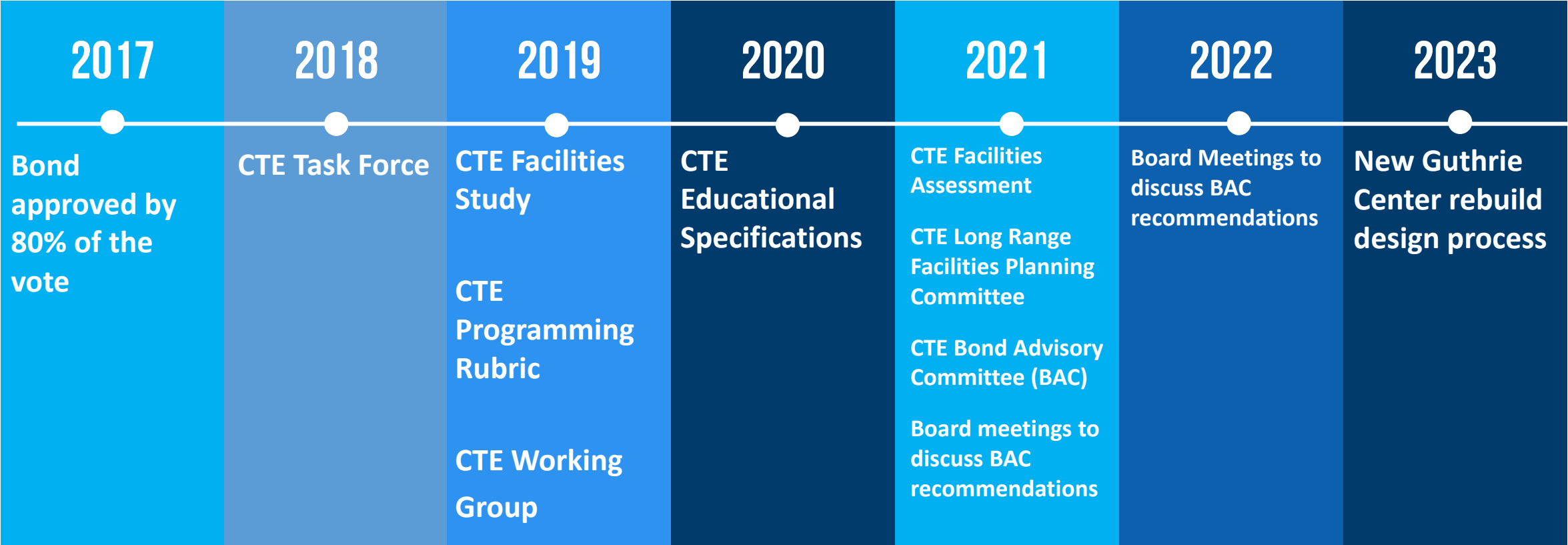
5. SITE ANALYSIS

6. PAT ENGAGEMENT & VISIONING SESSION



TIMELINE & CONTEXT: 2017 BOND TO CURRENT YEAR

WE ARE HERE!





BOND 2017 CTE SCOPE



REFRESH EQUIPMENT

- As CTE closely monitors industry needs, and designs programs to meet those needs, it is critical that equipment and technology used in programs of study mirror those used in industry. **The 2017 Bond updated and refreshed aging equipment in our existing CTE programs.**

VISIONING THE FUTURE OF CTE IN SBISD

- SBISD committed to developing a comprehensive task force of school, community, and business stakeholders who collaboratively created a vision for the CTE program. **The Task Force informed the vision of CTE and potential long-term investments in facilities, partnerships, and programming.**





BOND 2017 CTE TASK FORCE



2018

- The purpose of the Task Force was **to create a vision of a world-class CTE program for SBISD** and develop actionable recommendations for achieving that vision.
- The Task Force used the design thinking process to gain a clear understanding of the aspirations of our students and community, explore our own and other exemplary CTE programs, **and develop a vision and recommendations for the path forward.**
- **The Task Force presented its findings to Trustees in December 2018.**

January 11, 2023

Vision

In SBISD, we believe CTE is a critical part of achieving our T-2-4 goal. We are committed to offering our students a world-class CTE program. Our vision of a world-class CTE program for SBISD includes:

1. Equitable access to all CTE programs for all students
2. CTE pathways and courses that tap into students' interest and awakens their passion for learning and for their future
3. Strong pathways built around coherent sequences of courses that allow every student to graduate with a plan for their future, aligned with our T-2-4 goal
4. A culture of learning that includes rigorous programs taught by high quality teachers with industry experience using industry-relevant curriculum, resources and technology
5. CTE programs that are innovative, forward-thinking, and aligned with the future needs of business and industry
6. A strong foundation in the core academic courses for all students, with continued integration into all CTE courses
7. Strong, consistent commitment by all leaders, including campus leaders, central administration and Board members, that CTE is valuable for the future of all students and is, therefore, a critical part of accomplishing our T-2-4 goal
8. A high level of awareness by all K-12 students, as well as staff, parents, industry and the community of the opportunities available in our CTE program
9. A collaborative culture with industry and higher education that provides real-world connections, resources, and work experiences in order to achieve relevance to the workplace and to future industry needs
10. Opportunities for students to participate in and demonstrate leadership through CTE-related student organizations

BOND 2017 CTE WORKING GROUP



2019

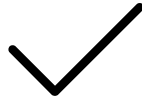
- In Fall 2019, a 21-member CTE Working Group built on the work of the Task Force to recommend specific Programs of Study.
- **Recommendations were presented to Trustees in December 2019.**

Career and Technical Education | SBISD CTE Program of Study

Cluster	Program of Study	Location
Agriculture, Food & Natural Resources	Animal Science	Ag Farm
	Vet Med	Ag Farm
Architecture & Construction	Architectural Design	Home to Central
	Construction Tech	Home to Central
	Electrical Tech	Home to Central
Arts, AV & Communications	Design & Multimedia Arts	Home
	Digital Communications	Home to Central
Business, Marketing and Finance	Accounting & Financial Services	Home
	Business Management	Home
	Entrepreneurship	Home
Education & Training	Teaching & Training	Home
Health Science	Dental Assistant	Home to Central
	Patient Care Tech	Home to Central
	Pharmacy Tech	Home to Central
	Healthcare Practitioner	Home
Hospitality & Tourism	Culinary Arts	Central
Information Technology	Information Technology Support & Services	Home to Central
Law & Public Safety	Law Enforcement	Central
Manufacturing	Welding	Home to Central
STEM	Cybersecurity	Home to Central
	Engineering	Home
	Programming and Software Development	Home to Central
Regional	Cosmetology	Central
Transportation, Distribution & Logistics	Automotive Tech	Future



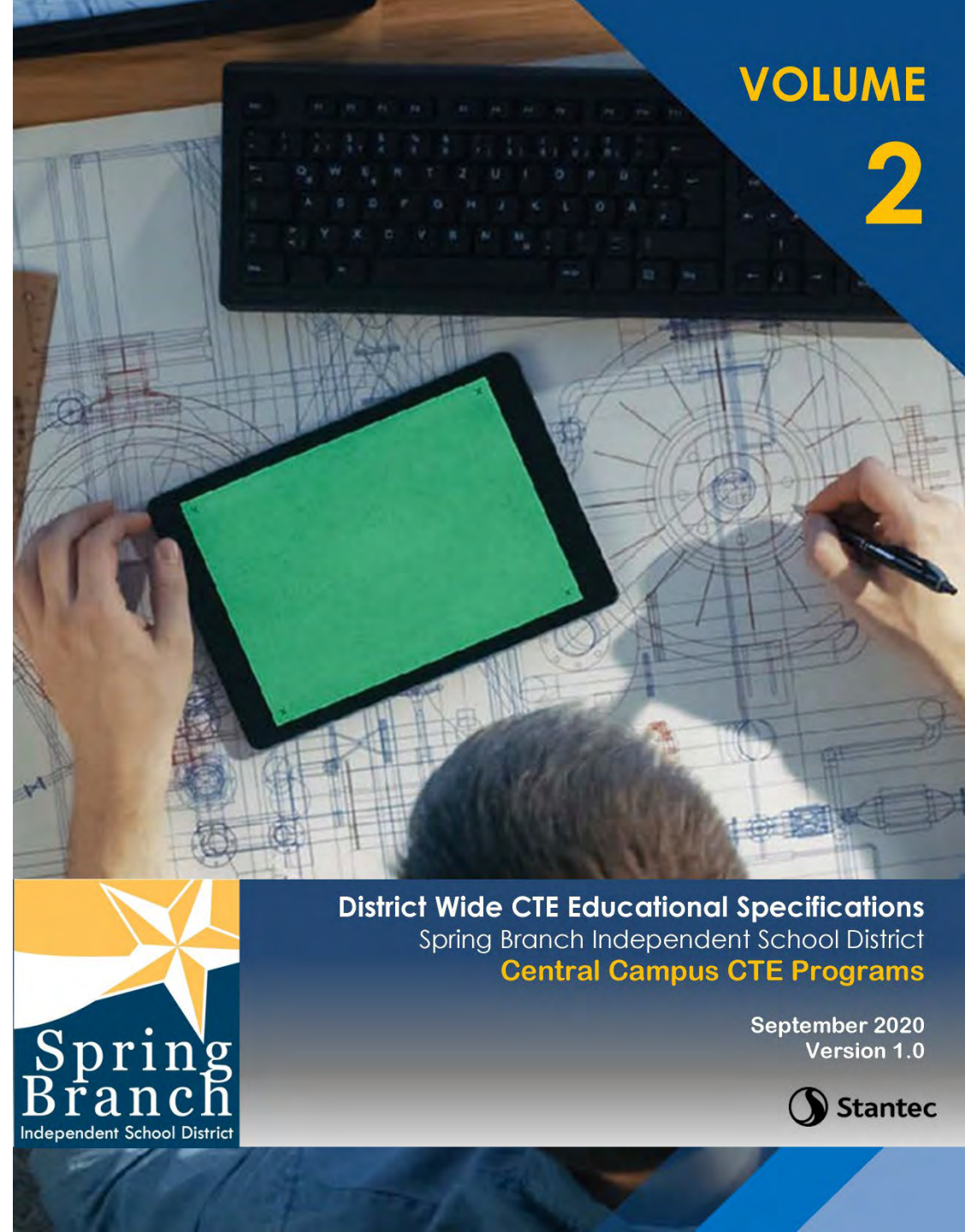
2017 BOND CTE EDUCATIONAL SPECIFICATIONS



2020

- With a defined vision for future CTE programming, district leaders, with support from Stantec Architects, developed educational specifications to align with the future CTE Programs of Study.
- **These were presented to Trustees in October 2020.**

January 11, 2023



VOLUME
2



District Wide CTE Educational Specifications
Spring Branch Independent School District
Central Campus CTE Programs

September 2020
Version 1.0



BOND 2017

CTE LONG RANGE FACILITIES PLANNING & BOND ADVISORY COMMITTEES

2021

- Developed and presented to the Trustees a CTE Long-Range Facilities Plan to serve the district as a baseline for the next 10 years.
- The Plan included recommendations related to upgrades, renovations, and/or expansions to existing classrooms, labs, and facilities to align with the CTE Programs of Study, and where appropriate, identify facilities to be replaced or added.
- The **Bond Advisory Committee** was charged with developing a bond proposal package for recommendation to the Trustees.
- **The Guthrie Center was recommended to the Trustees to be rebuilt.**

January 11, 2023



WHY ARE WE HERE?

2022 BOND

Spring Branch Independent School District

PROPOSITION A OF THE 2022 BOND PROVIDES FUNDING TO REBUILD THE GUTHRIE CENTER

- BUILD NEW CTE CENTER ON CURRENT SITE WHILE EXISTING CENTER IS OPEN
- PHASE 1: CONSTRUCTION OF NEW GUTHRIE CENTER
- PHASE 2: DEMOLITION OF EXISTING CENTER WITH ADDITIONAL SITE WORK
- 30-48 MONTH CONSTRUCTION DURATION
- **LATE 2027 COMPLETION**

1. PAT MEMBERS & CHARGE

2. 2017/2022 BOND PROGRAM

3. FACT FINDING

4. PROJECT OVERVIEW & PROCESS

5. SITE ANALYSIS

6. PAT ENGAGEMENT & VISIONING SESSION



FACT FINDING: GUTHRIE CENTER TOUR



HOUSTON AREA CTE TOURS



BUSINESS AND INDUSTRY CONVENINGS



DALLAS AREA CTE TOURS



January 11, 2023

CEO ROUNDTABLE



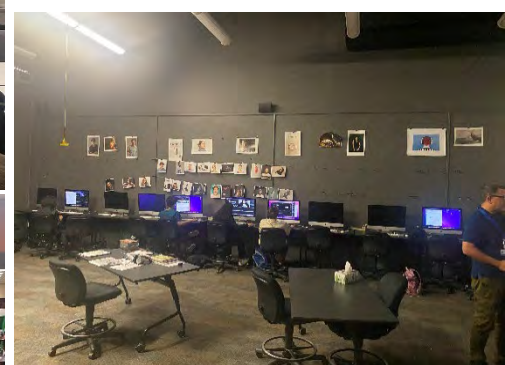
GUTHRIE AND CTE STAFF INPUT



FACT FINDING: EXISTING GUTHRIE CENTER TOUR



January 11, 2023



FACT FINDING: ANGLETON CTE TOUR

TAKEAWAYS

- Large window displays into each program
- Clear open circulation
- Use of natural materials
- Industry-ready programs with adequate space

January 11, 2023



FACT FINDING: ALLEN STEAM CENTER TOUR

TAKEAWAYS

- Visual connection and adjacency between classrooms, labs, and collaboration spaces
- Building used as a teaching tool
- Connection with natural environment and use of natural light
- Flexible space for district to engage K-8 students in STEAM exploration

January 11, 2023

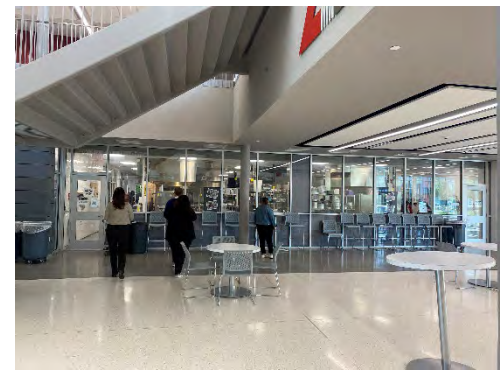


FACT FINDING: CROWLEY CTE TOUR

TAKEAWAYS

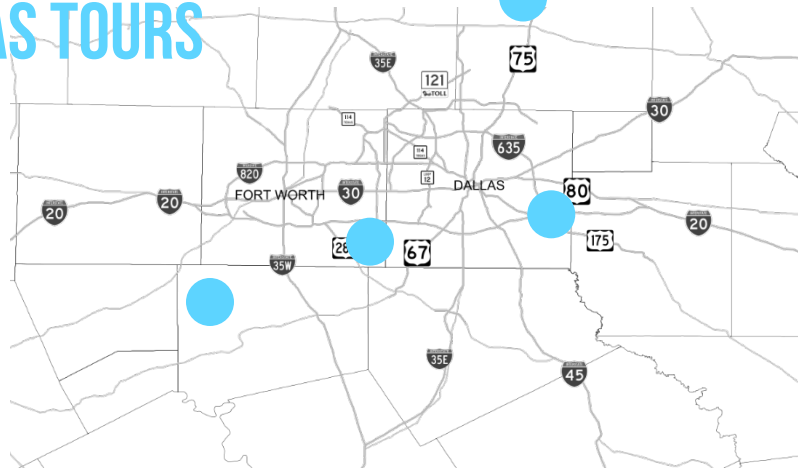
- Connection with multi-use courtyard
- Large multi-purpose meeting space
- Large open labs with flexibility for growth
- Campus store to sell products produced on-campus
- Use of transparent and translucent glass

January 11, 2023

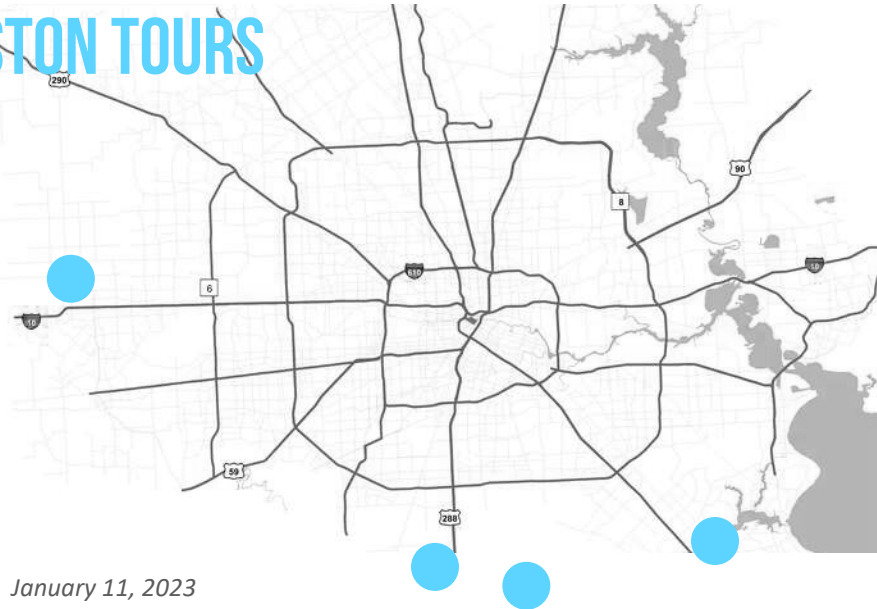


FACT FINDING: TOUR OF INDUSTRY

DALLAS TOURS



HOUSTON TOURS



January 11, 2023





FACT FINDING: INDUSTRY STAKEHOLDER MEETING: CEO ROUNDTABLE

Spring Branch ISD
Superintendent-CEO Breakfast

Wednesday | October 12 | 7:30-9:00 a.m.

Churrasco's
(Located in Gateway Memorial City)
947 Gessner Rd, Suite B-290
Houston, TX 77024

RSVP at: partner@springbranchisd.com or 713.251.2468

We are interested to learn:

- the vision for the future of your industry; and
- the skills you need developed in our youth to best serve your future workforce.



FACT FINDING: BUSINESS AND INDUSTRY CONVENINGS:

GROUP 1

- Architecture and Construction
- Manufacturing
- Transportation, Distribution, and Logistics

GROUP 2

- Arts, A/V Technology, and Communications
- Health Science
- Law and Public Service

GROUP 3

- Business, Marketing, and Finance
- Information Technology
- STEM

GROUP 4

- Human Services
- Education and Training
- Hospitality and Tourism



FACT FINDING: INDUSTRY STAKEHOLDER MEETINGS:

WHAT THREE WORDS DESCRIBE THE FUTURE OF YOUR INDUSTRY?



WHAT ATTRIBUTES ARE YOU LOOKING FOR IN A NEW HIRE/EMPLOYEE?



FACT FINDING: GUTHRIE CENTER & CTE STAFF:

- PBK Architects walked with Guthrie staff to see firsthand the current utilization of instructional space
- Guthrie staff provided feedback through questionnaires about how instructional spaces contribute to Programs of Study
 - What do you like about your current facility?
 - What isn't working about your space?
- Guthrie staff met with district CTE core team and PBK Architects in small groups to provide specific feedback
- Met with CTE high school staff to review future programs being relocated to the new Guthrie Center
- **Discussions focused on existing culture and infrastructure of The Guthrie Center**

January 11, 2023

1
What is your first and last name?
Jorge Mata
2
What program/pathway do you teach?
Electrician Technician

1
What is your first and last name?
CDR Coufal
2
What program/pathway do you teach?
NJROTC

1
What is your first and last name?
Dana Bucci
2
What program/pathway do you teach?
Culinary 1
3
How long have you been with Spring Branch ISD? Guthrie?
3 years
4
How would you describe the culture of Guthrie?
It's like a family
5
What do you like about the current facility? Are there spaces that work well for your program?
I enjoy the courtyard area for students as well as the Student Center. The courtyard area is a great place for students to hang out and the Student Center program have some issues

6
What isn't working well about your current space?
In my current space, I have equipment that is not all working. I had an oven that died the second week of class, my oven died over the summer. The ovens are old and can't seem to be properly calibrated. The temperature is not consistent, it goes from 78 in the kitchen to 65 in some classes (at the same time). The temperature is not consistent. Yes, we have called the district about all of these issues. The room would be nice, and having it closed off from cooking (the kitchen) would be nice. I can see the action without listening to it.

7
What space or equipment could you use to enhance your program?
Better ovens (that work), new reach-ins. An area used for putting equipment away for various equipment that all instructors have access to - not in a locked or caged area. This way, everything is stored together instead of in different rooms. Each in their own classes. I think this creates animosity because not everyone has access to the equipment or knows what is available to be used.



The Guthrie Center PAT #1



FACT FINDING: GUTHRIE CENTER STAFF: HOW WOULD YOU DESCRIBE THE CULTURE OF GUTHRIE?

“PASSIONATE”

**“EXPECTED TO STEP AWAY FROM AND GO BEYOND SOME OF THE
LIMITING ASPECTS OF TRADITIONAL EDUCATION.”**

“LESS RESTRICTIONS”

“SIMULATED COLLEGE AND PROFESSIONAL ATMOSPHERE”

“CARING”

“JUNIOR COLLEGE”

**“NEVER LIMITING OURSELVES OR OUR STUDENTS WE HAVE
PROVIDED A SAFE PLACE FOR EVERYONE TO DO MORE, GO
BEYOND, TO DISCOVER APPLY AND SUCCEED.”**

“LIKE A FAMILY”

**“WE TEACH STUDENTS HOW TO BE
THINKERS AND PROBLEM SOLVERS WITH
A BROAD RANGE OF SKILLS THROUGH OUR
SPECIFIC COURSES.”**

**“THE CULTURE AT GUTHRIE IS ONE OF PROFESSIONALISM, COOPERATION,
INTEGRITY, EXCELLENCE, CAMARADERIE, AND SUPPORT.”**

1. PAT MEMBERS & CHARGE

2. 2017/2022 BOND PROGRAM

3. FACT FINDING

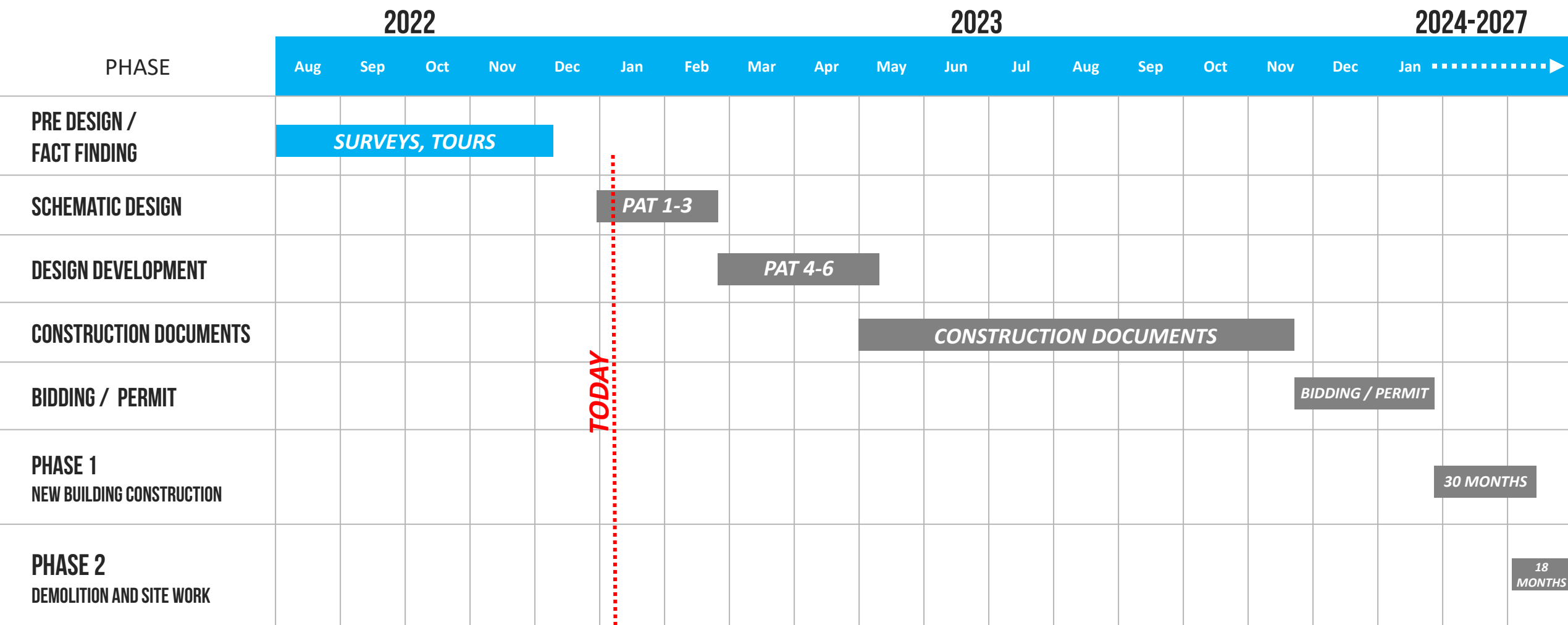
4. PROJECT OVERVIEW & PROCESS

5. SITE ANALYSIS

6. PAT ENGAGEMENT & VISIONING SESSION



PROJECT ESTIMATED SCHEDULE

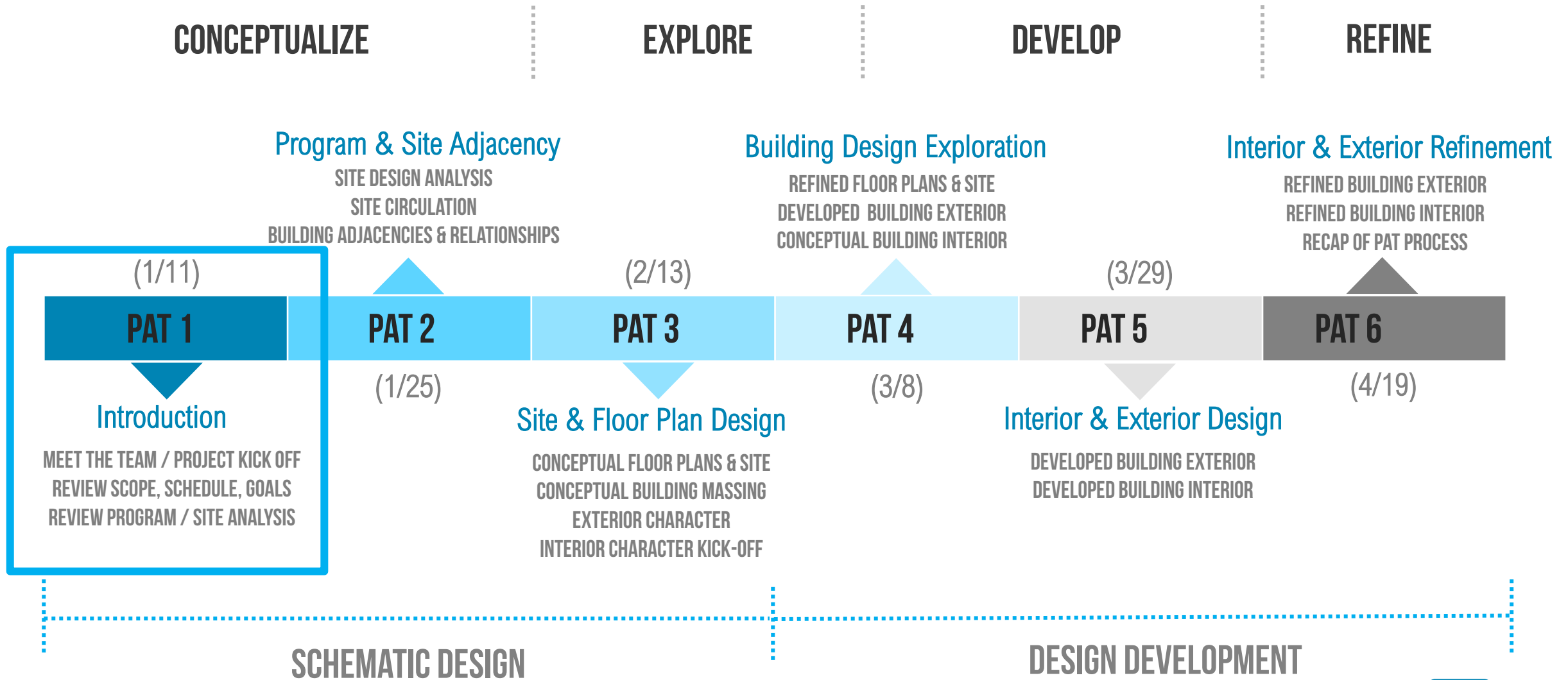


TODAY

LATE 2027 COMPLETION



PAT PROCESS



EVOLUTION OF CONCEPT AND FORM

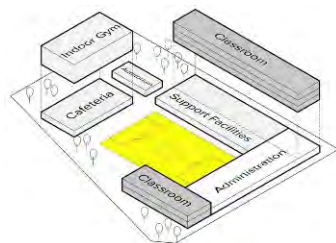
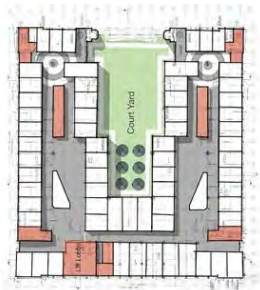
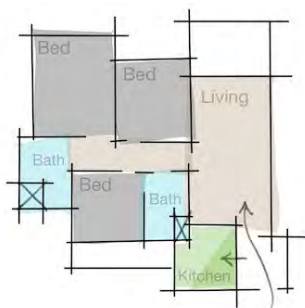
GOALS

CONCEPTUALIZE

EXPLORE

DEVELOP

REFINE



PAT 1

PAT 2

PAT 3

PAT 4

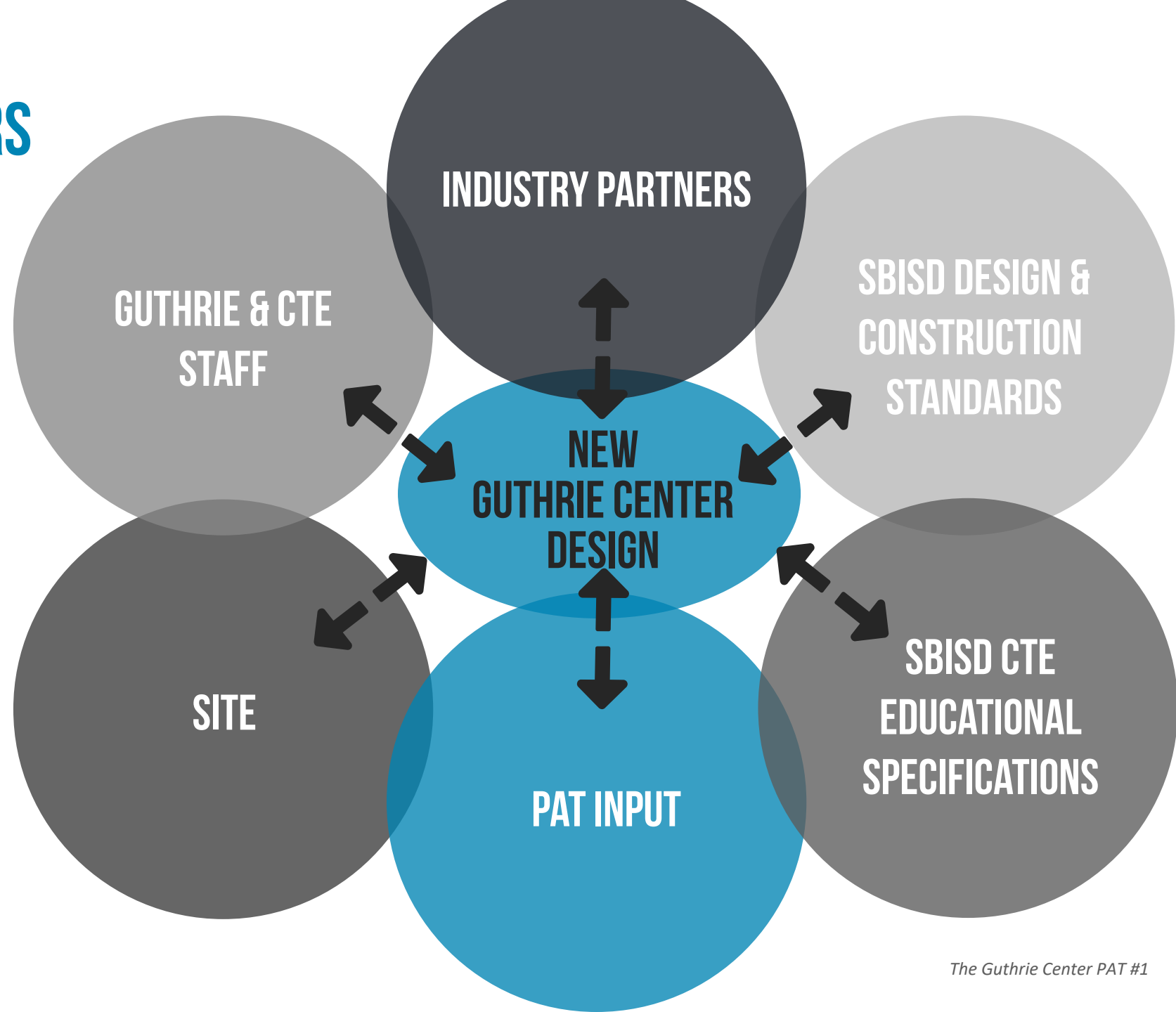
PAT 5

PAT 6





DESIGN FILTERS



1. PAT MEMBERS & CHARGE

2. 2017/2022 BOND PROGRAM

3. FACT FINDING

4. PROJECT OVERVIEW & PROCESS

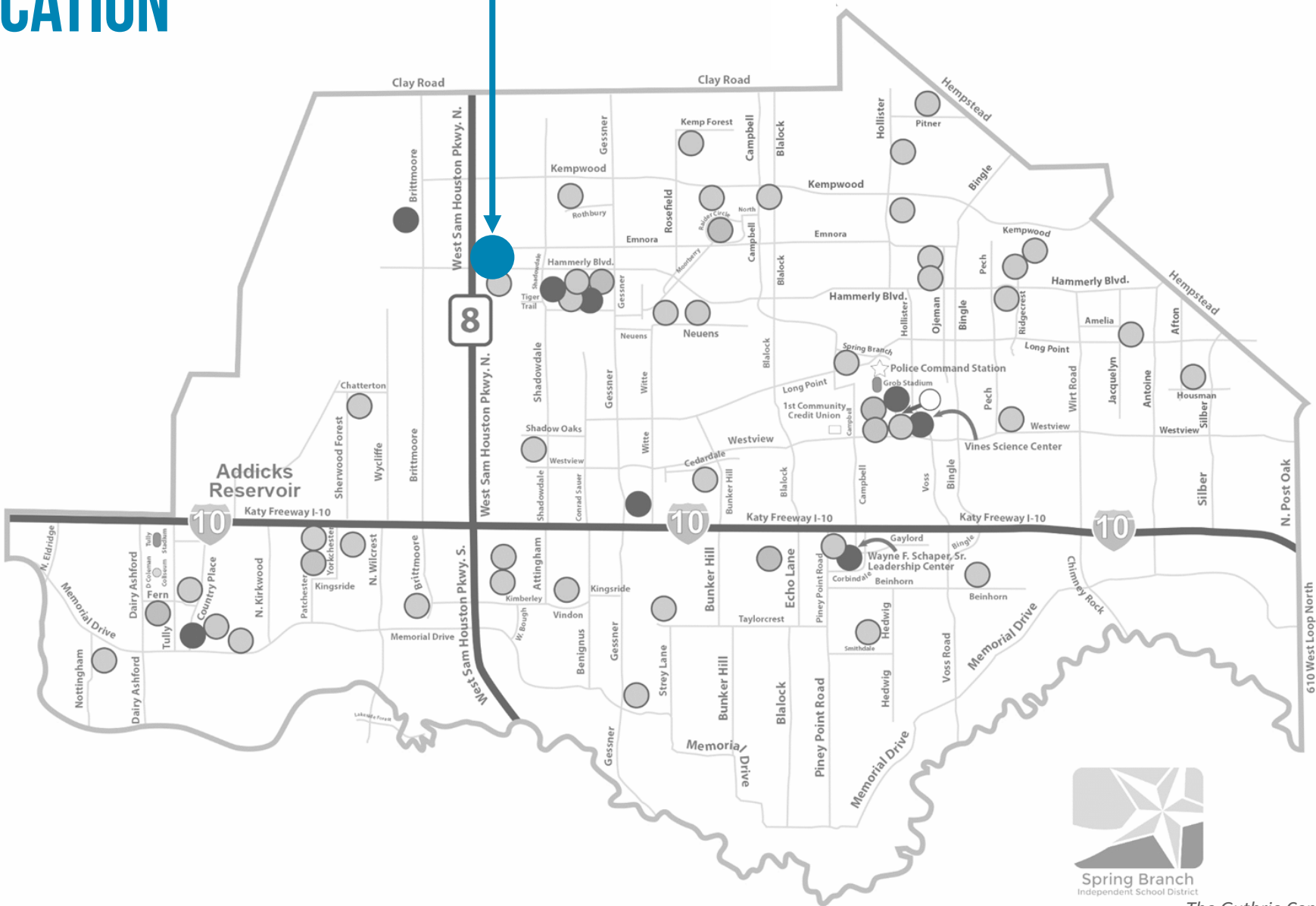
5. SITE ANALYSIS

6. PAT ENGAGEMENT & VISIONING SESSION



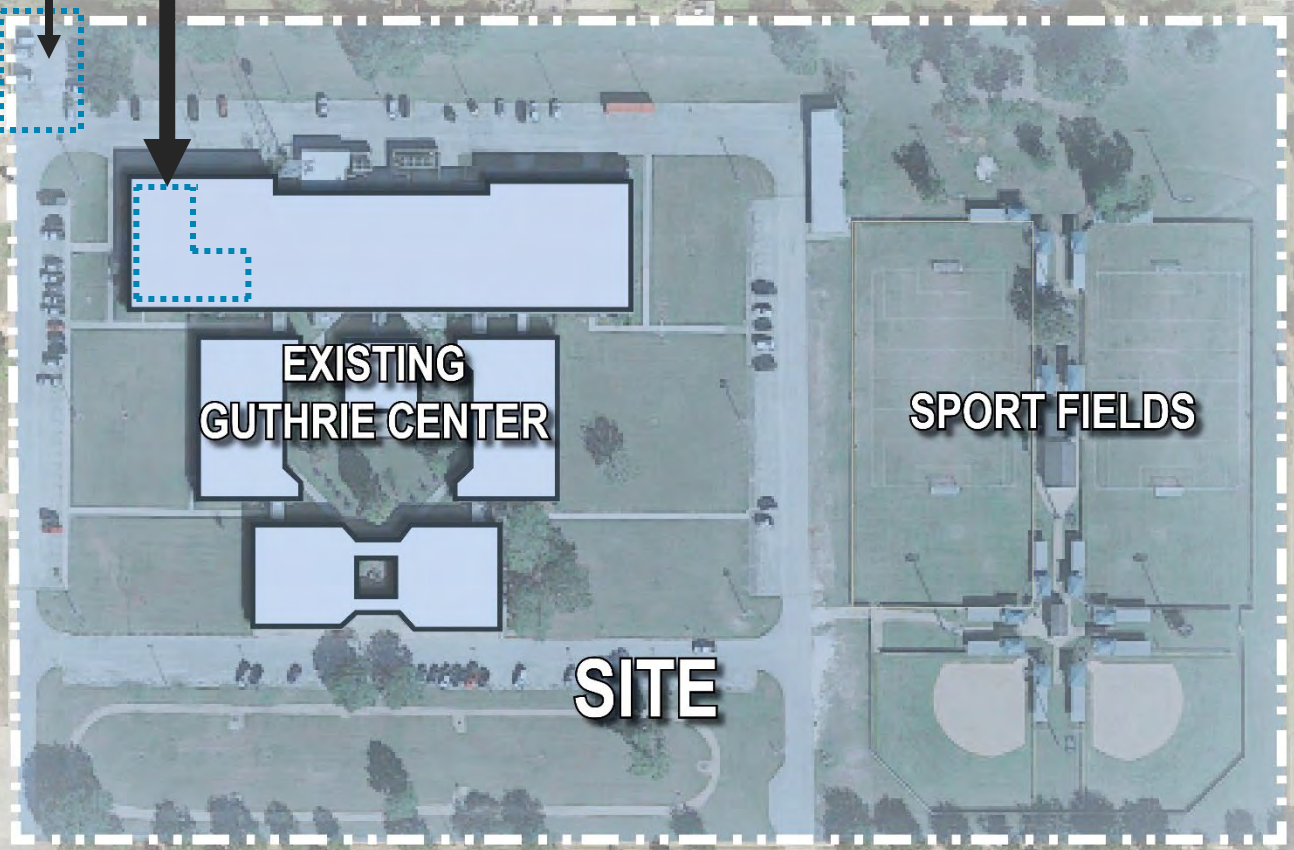
SITE LOCATION

THE GUTHRIE CENTER



BELTWAY 8

**SBISD
IT DEPARTMENT**



**EXISTING
GUTHRIE CENTER**

SPORT FIELDS

SITE

HAMMERLY BLVD.

- PUBLIC
- SEMI-PUBLIC
- PRIVATE

RESIDENTIAL

PRIVATE

ADVENTIST
CHURCH

SEMI-PUBLIC

SEMI-PUBLIC

ST. JOSEPH
ORTHODOX CHURCH

GAS
STATION

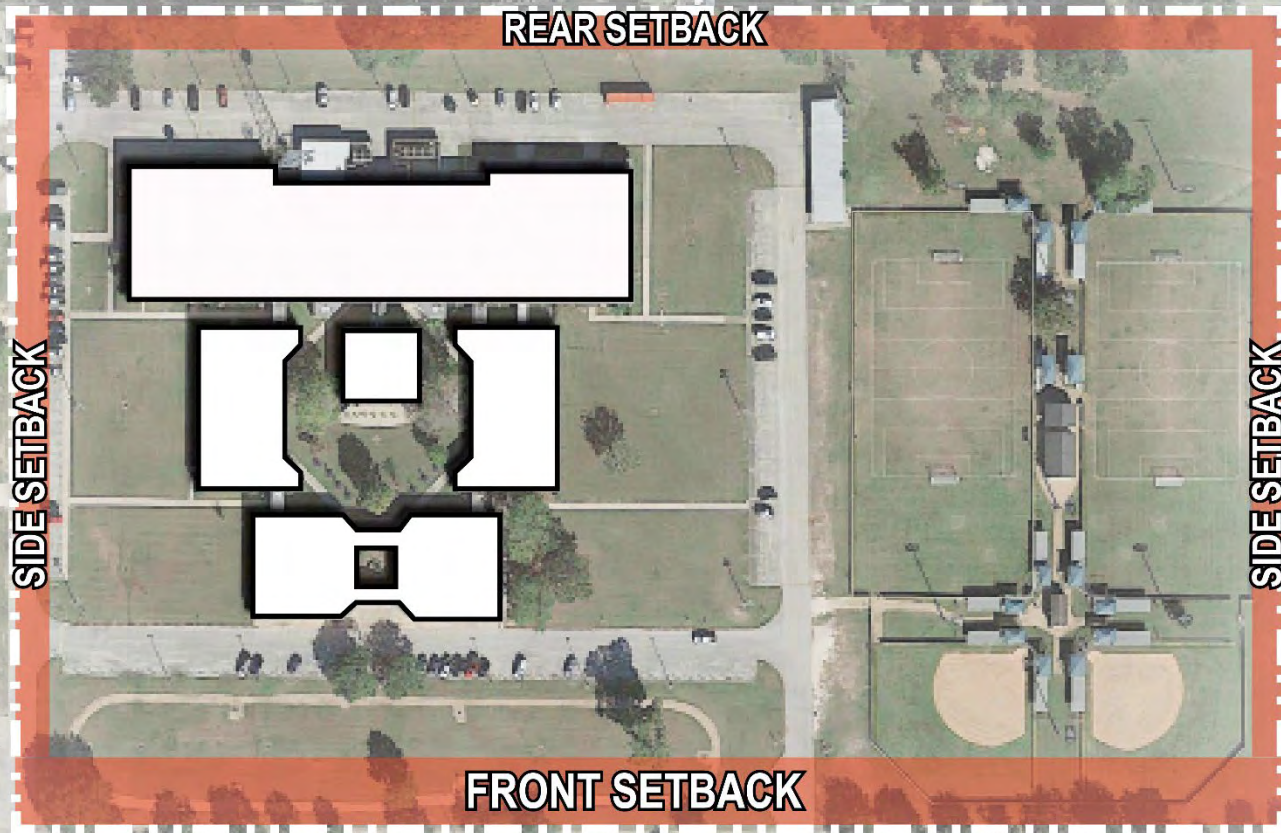
PUBLIC
HAMMERLY BLVD.

AGNES MOFFITT
RECREATIONAL COMPLEX

WESTWOOD
ELEMENTARY

BELTWAY 8

BELTWAY 8



REAR SETBACK

SIDE SETBACK

SIDE SETBACK

FRONT SETBACK

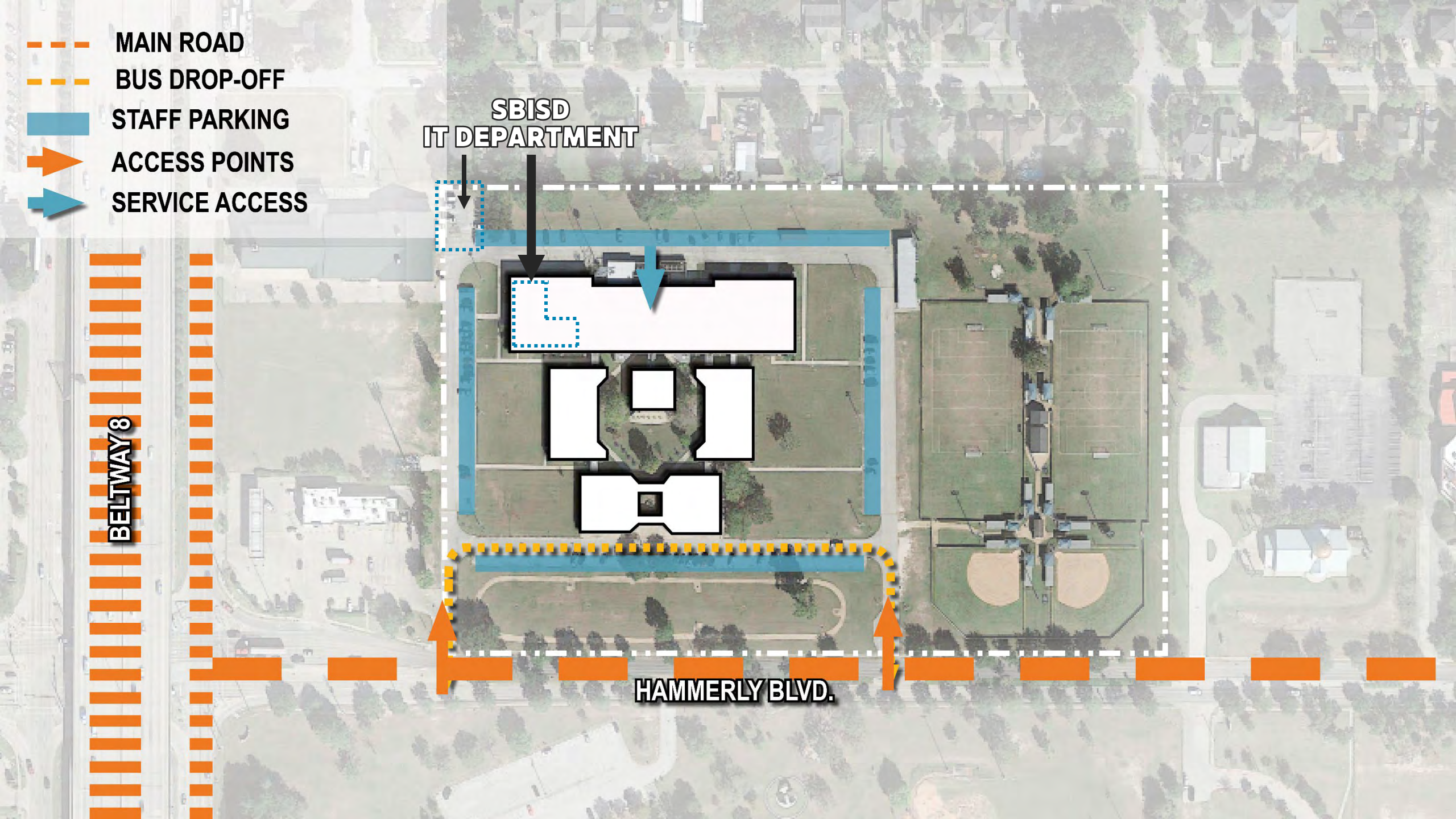
HAMMERLY BLVD.





- MAIN ROAD
- BUS DROP-OFF
- STAFF PARKING
- ➡ ACCESS POINTS
- ➡ SERVICE ACCESS

SBISD
IT DEPARTMENT

BELTWAY 8

HAMMERLY BLVD.



-  BUILDABLE AREA
-  PHASE 2 SITE WORK
-  ROAD ACCESS
-  EXISTING TREES

**PHASE 2
SITE WORK**

**PHASE 1
BUILDABLE AREA**



1. PAT MEMBERS & CHARGE

2. 2017/2022 BOND PROGRAM

3. FACT FINDING

4. PROJECT OVERVIEW & PROCESS

5. SITE ANALYSIS

6. PAT VISIONING SESSION

PAT VISIONING SESSION

WE WANT TO HEAR FROM YOU!

“

“PASSIONATE”

TEAM PLAYER COMMUNICATION
SELF STARTER PASSIONATE CHALLENGING
MOTIVATED ADAPTABLE RELIABLE
CHANGING COACHABLE
INNOVATIVE TECHNOLOGY
GROWTH COLLABORATION

“WE TEACH STUDENTS HOW TO BE THINKERS AND PROBLEM SOLVERS WITH A BROAD RANGE OF SKILLS THROUGH OUR SPECIFIC COURSES.”

“LESS RESTRICTIONS” “LIKE A FAMILY”

“SIMULATED COLLEGE AND PROFESSIONAL ATMOSPHERE”

PAT VISIONING

QUESTION 1:

*Describe your goal for the **overall feel** of the new Guthrie Center.*

PAT VISIONING

QUESTION 2:

*As you consider a new Guthrie Center, what are some of the **building attributes** that you think would allow for student success and engagement?*

PAT VISIONING

QUESTION 3:

Describe what can make the new Guthrie Center a special and unique experience for students and staff.

PAT VISIONING

QUESTION 4:

How can the new Guthrie Center inspire generations of students to come?



NEXT STEPS

CLOSING REMARKS

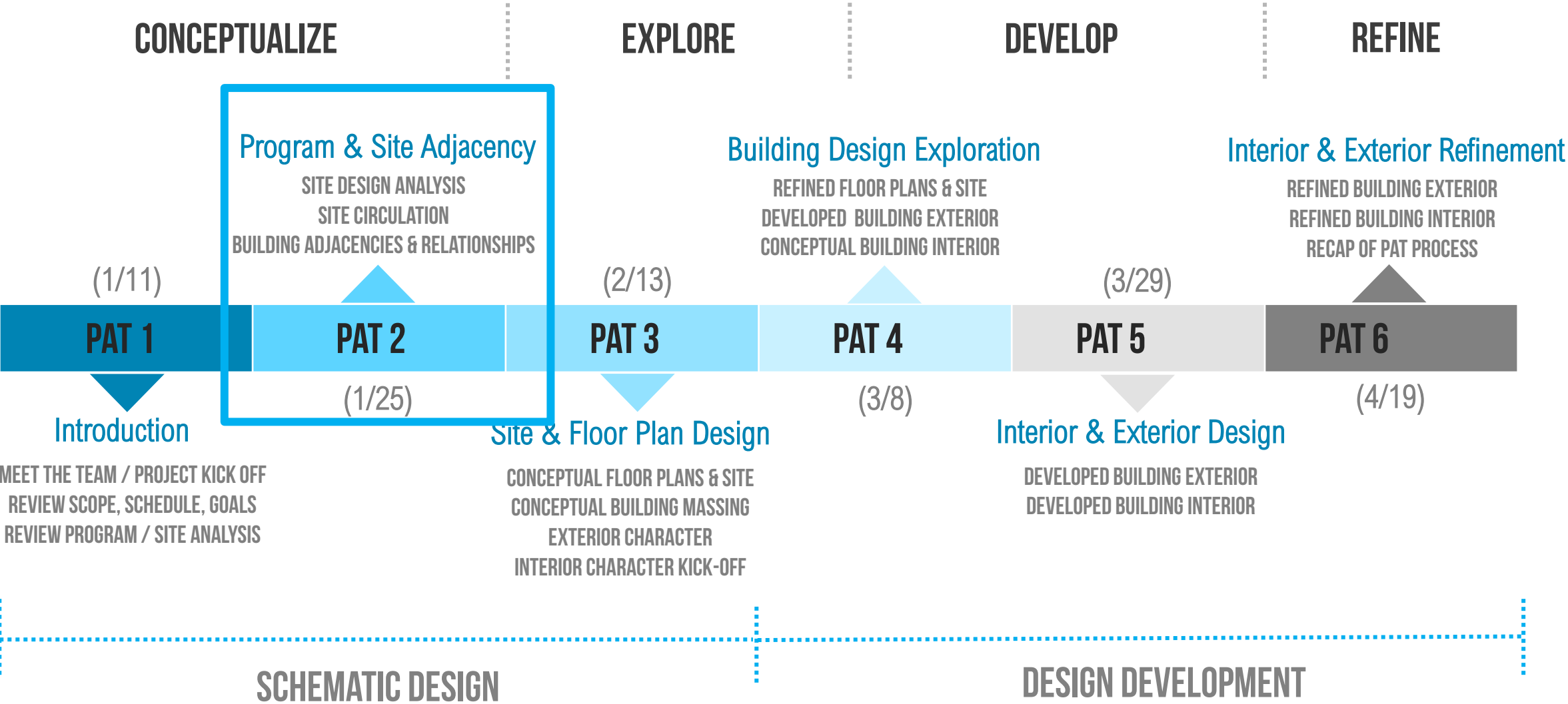
ARE WE HEADING IN THE RIGHT DIRECTION FOR THE NEW GUTHRIE CENTER?

WWW.MENTI.COM
CODE: 4132 3978





NEXT STEPS





THANK YOU!

PAT #2 DATE:

January 25, 2023 : 4:00pm – 5:45pm

PRK