

Hunters Creek Elementary School Replacement School PAT Meeting #6.5 – 06.26.19



Hunters Creek Elementary School

PAT Charge

The goal of the PAT is to ensure that parents, staff and community members have the opportunity to take part in the planning and design of the new school.

The PAT members will serve as communicators to and from the community during the schematic design and design development phases of the project and participate in discussions that will lead to recommendations. The PAT concludes its work once construction begins.

All recommendations must be in alignment with the District's Educational Specifications and Design and Construction Standards.



Hunters Creek Elementary School

PAT Charge (continued)

The PAT will **reach a proposed recommendation through consensus**.

Any concerns identified by the PAT members should immediately be brought to the attention of the SBISD Project Manager.

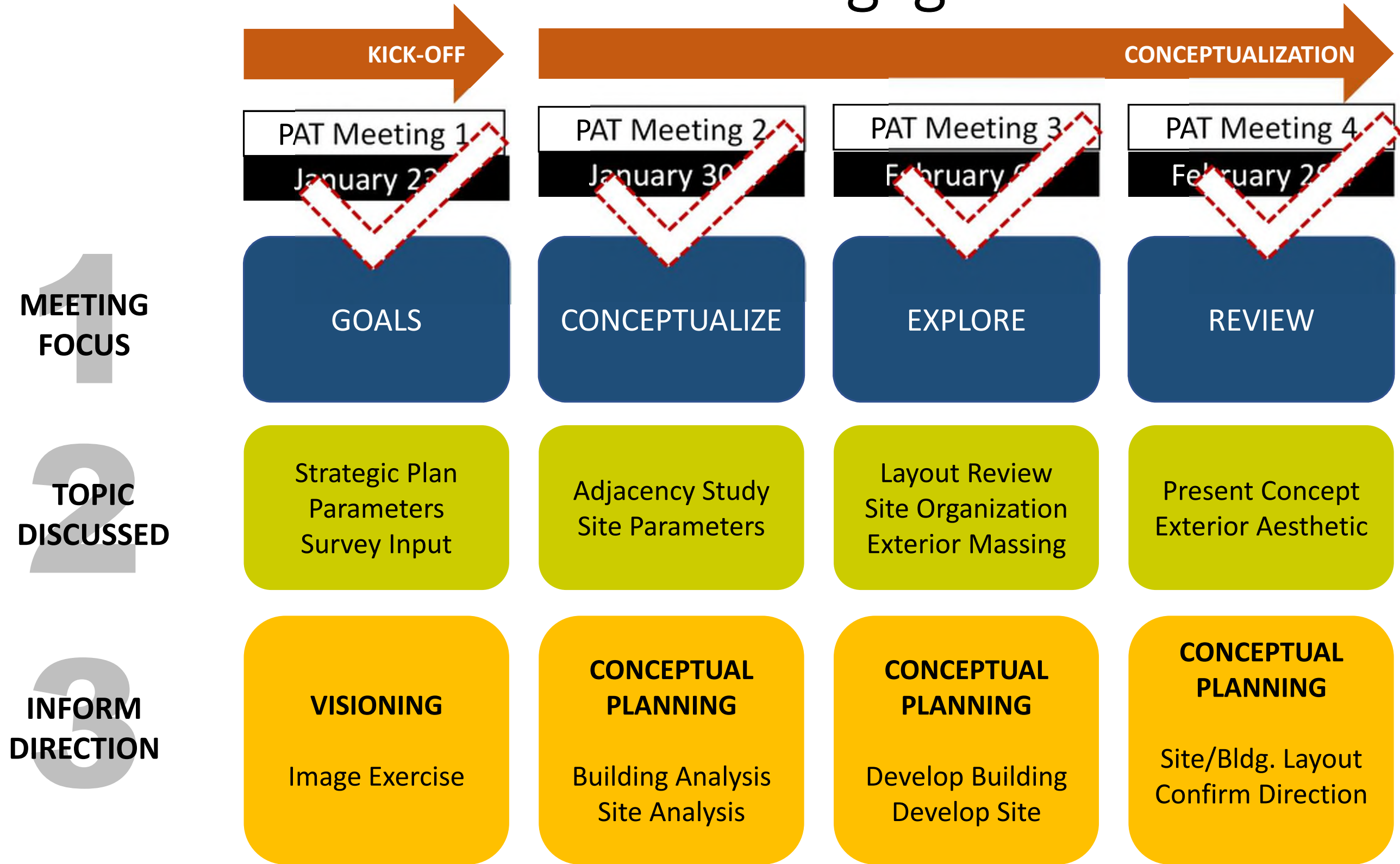
These **recommendations will be presented** by the project's architects:

1. to the **Superintendent of Schools**, and based on approval from the Superintendent,
2. to the **Board of Trustees** for their approval.

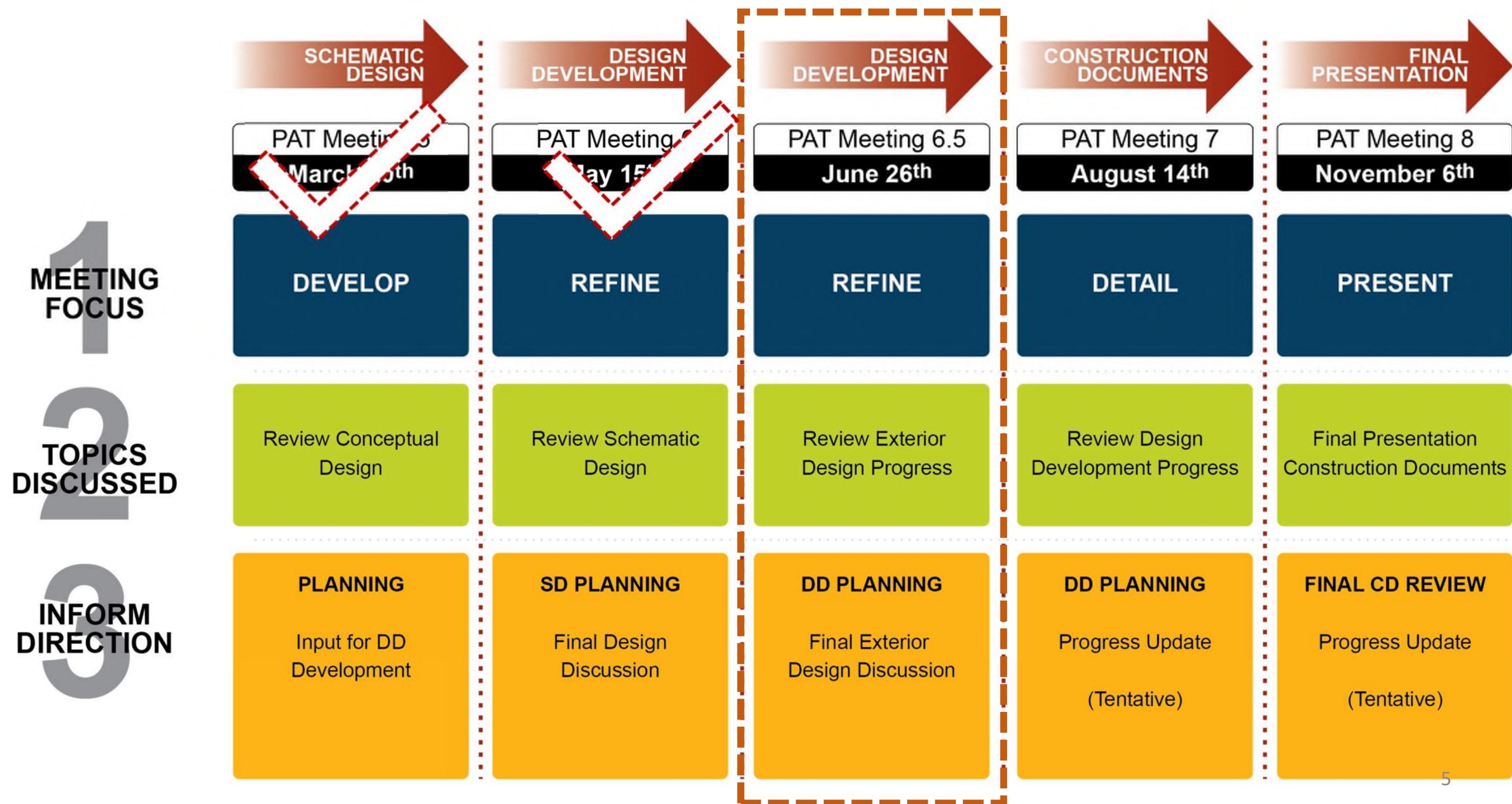
The Board of Trustees may act upon the recommendations developed with PAT input by approving, amending, altering or not approving all or any part of the recommendations.



Hunters Creek PAT Engagement Process



Hunters Creek PAT Engagement Process



MOST LIKED EXTERIOR CONCEPT IMAGES



EXTERIOR CONCEPT IMAGES



COMPOSITE FIRST FLOOR PLAN



COMPOSITE SECOND FLOOR PLAN



WHERE WE LEFT OFF...





FRONT ENTRANCE

FRONT ENTRY: OPTION A



FRONT ENTRY: OPTION A



BEINHORN/FLINT RIVER: OPTION A



FRONT ENTRY – BEINHORN: OPTION A



FRONT ENTRY – LIBRARY: OPTION A



FRONT ENTRY: OPTION B



FRONT ENTRY: OPTION B



BEINHORN/FLINT RIVER: OPTION B



FRONT ENTRY – BEINHORN: OPTION B



FRONT ENTRY – LIBRARY: OPTION B





EXTERIOR ELEVATIONS

WEST ELEVATION: HORIZONTAL OPTION



EAST ELEVATION: HORIZONTAL OPTION



BUS DROP OFF: HORIZONTAL OPTION



BUS DROP OFF: HORIZONTAL OPTION



PARENT DROP OFF: HORIZONTAL OPTION



WEST ELEVATION: VERTICAL OPTION



EAST ELEVATION: VERTICAL OPTION



BUS DROP OFF: VERTICAL OPTION



BUS DROP OFF: VERTICAL OPTION



EAST ELEVATION: VERTICAL OPTION



COURTYARD

COURTYARD – PLAN: RECTILINEAR



COURTYARD – LIBRARY: RECTILINEAR



TURF NOT CURRENTLY IN CONTRACT

COURTYARD: RECTILINEAR



POTENTIAL LOCATION
FOR RAISED BEDS, NIC.

COURTYARD – CAFETERIA: RECTILINEAR

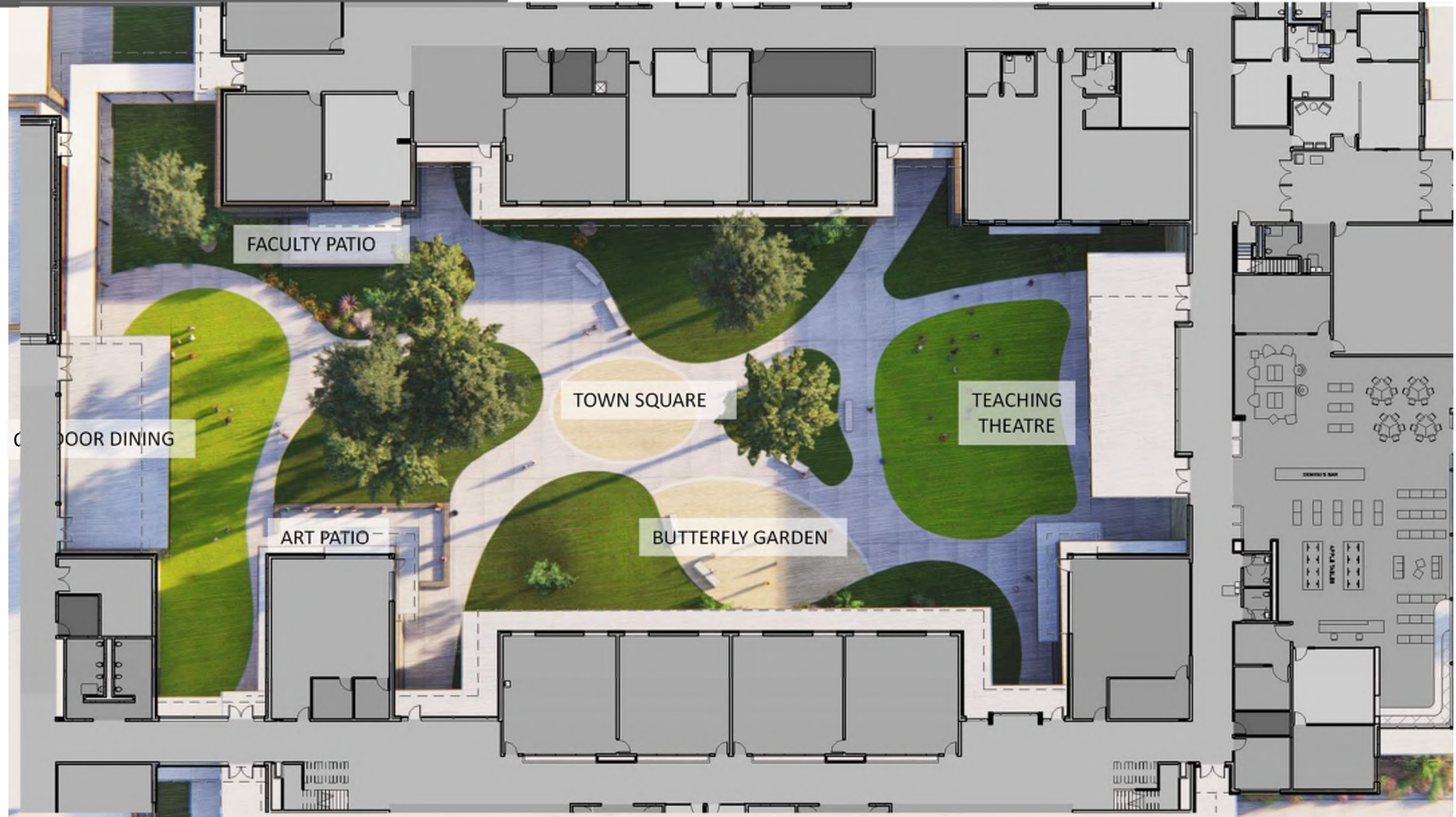


COURTYARD – DINING: RECTILINEAR

MURALS NOT CURRENTLY IN CONTRACT



COURTYARD – PLAN VIEW: ORGANIC



COURTYARD – LIBRARY: ORGANIC



TURF NOT CURRENTLY IN CONTRACT

COURTYARD: ORGANIC



POTENTIAL LOCATION
FOR RAISED BEDS, NIC.

COURTYARD – CAFETERIA: ORGANIC



COURTYARD – DINING: ORGANIC

MURALS NOT CURRENTLY IN CONTRACT



SITE PLAN



PLAYGROUNDS





FRONT ENTRANCE REVIEWED

FRONT ENTRY



OPTION A



OPTION B

FRONT ENTRY



OPTION A



OPTION B

FRONT ENTRY



OPTION A1



OPTION A2

FRONT ENTRY



OPTION B1



OPTION B2

FRONT ENTRY



OPTION A1



OPTION A2

FRONT ENTRY



OPTION B1



OPTION B2



EXTERIOR ELEVATIONS REVIEWED

WEST ELEVATION

**OPTION A
HORIZONTAL**



**OPTION B
VERTICAL**



BUS DROP OFF



OPTION A - HORIZONTAL



OPTION B - VERTICAL

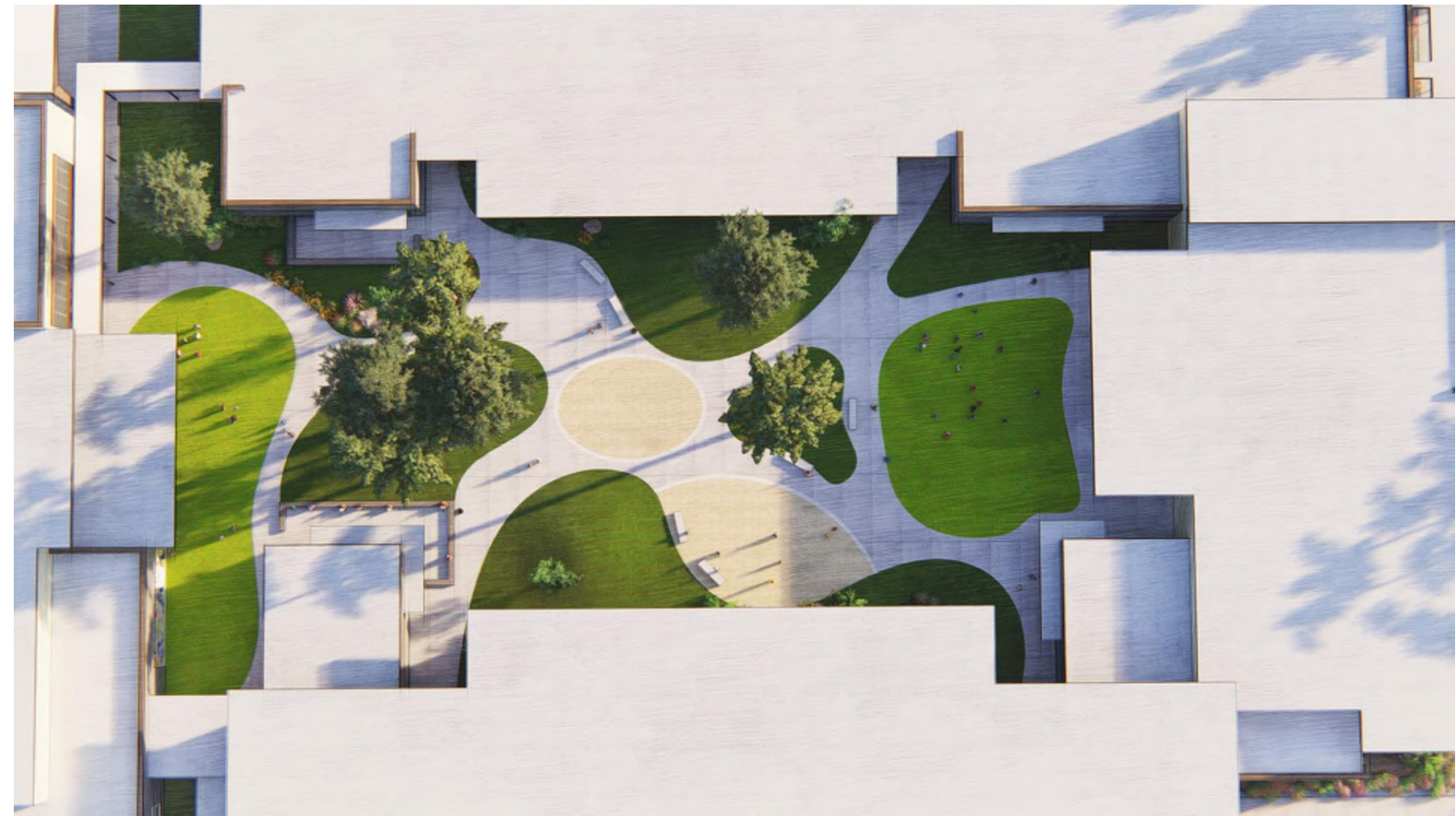


COURTYARD REVIEWED

COURTYARD – PLAN VIEW



OPTION A - RECTILINEAR



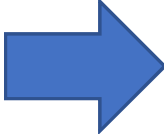
OPTION B - ORGANIC

VOTE

Hunters Creek Elementary School

Next Steps

PAT Meeting Schedule: all meetings are at 3:20pm at HCE

	■ Meeting #6.5	July 24, 2019	Exterior Design/Materials Update
	■ Meeting #7	August 14, 2019	Design Development Update
	■ Meeting #8	November 6, 2019	Final Presentation

QUESTIONS?

Hunters Creek Elementary School

Replacement School PAT Meeting #6.5 – 06.26.19 – Voting Card



FRONT ENTRY

OPTION A _____



OPTION B _____



• OPTION A1 _____



• OPTION A2 _____



• OPTION B1 _____



• OPTION B2 _____



EXTERIOR ELEVATIONS

HORIZONTAL _____



VERTICAL _____



COUTYARD

RECTILINEAR _____



ORGANIC _____

