



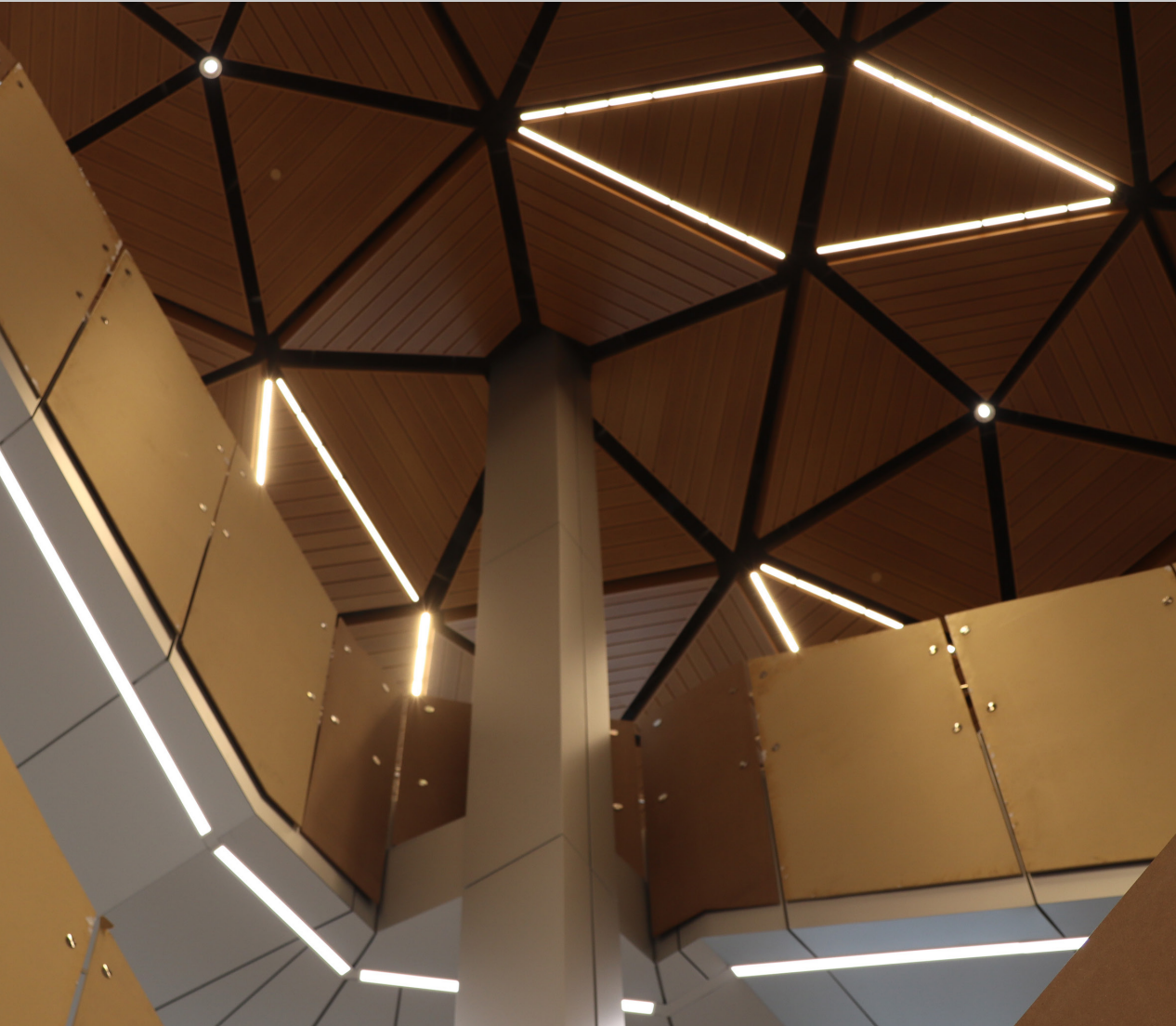
Memorial High School

**Celebrating a New
Instructional and Cafeteria Building
A 2017 Bond Project**

SPRING BRANCH INDEPENDENT SCHOOL DISTRICT

935 Echo Lane, Houston, TX 77024

Principal: Lisa Weir



WELCOME

Memorial High School's new four-story, 161,249 square-foot building addition and renovations to the existing site elevate teaching, learning and engagement to new heights in both design and functionality.

Additional facility maintenance and improved safety and site usage are part of the recently completed work. The original school was built in 1963.



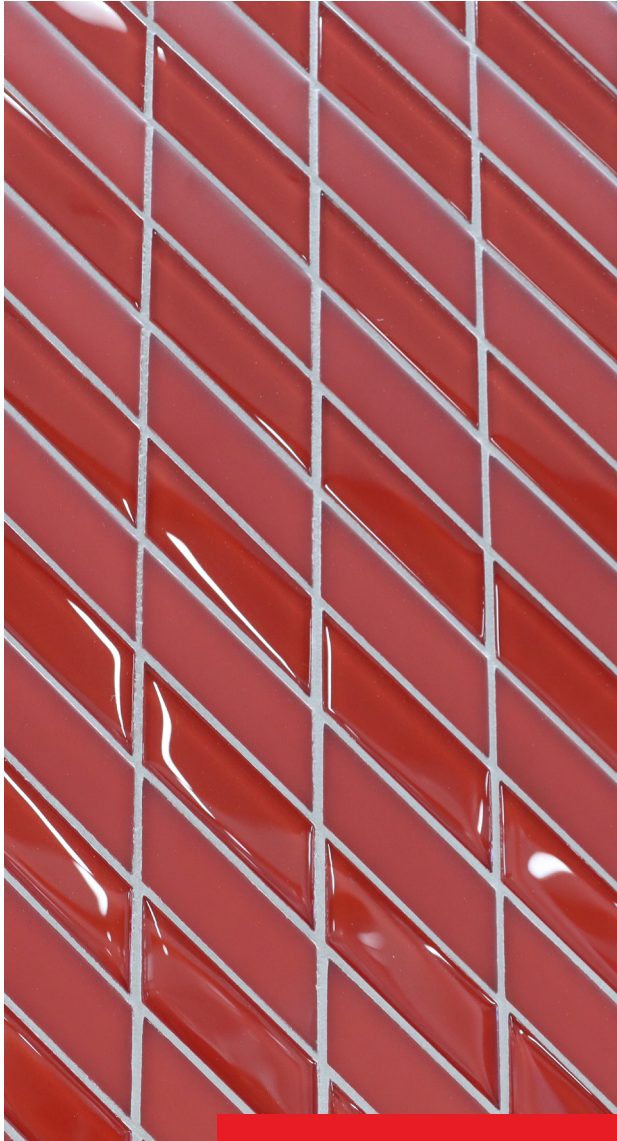
DETAILS

Unparalleled attention to detail, from Mustang murals, to acoustical ceilings, a main central atrium and modern staircase, make the four-story building addition unique.



The new classroom building design was a collaboration between our architects, Stantec, and a project advisory team. Durotech Inc. served as the general contractor for the project. The four-story design replaces six older academic buildings.

COLLABORATION



Architect: Stantec **Contractor:** Durotech, Inc.
Capacity: 1,368 Students **Size:** 161,249 square-foot



THE DESIGN

The new classroom wing and site improvements provide critical upgrades identified for this Phase I rebuild of Memorial High School.



ATHLETICS UPGRADES

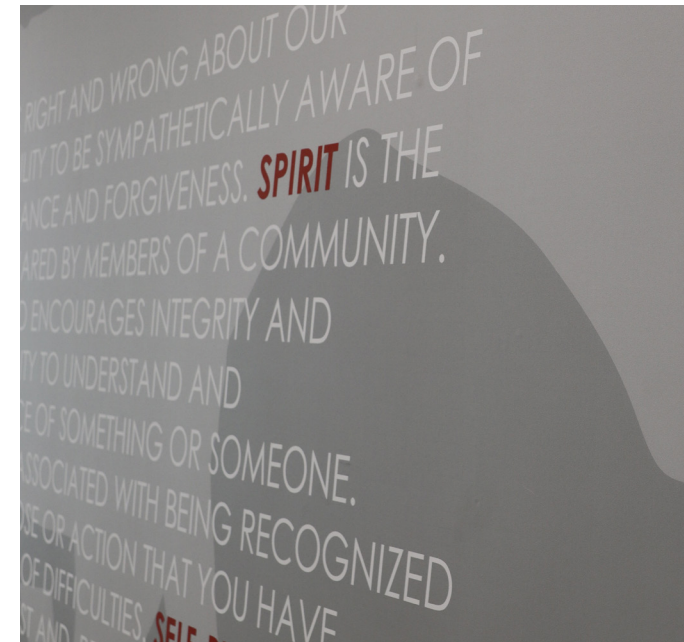
The project features upgrades to athletics including a new turf field, safety netting, practice fields, a field house, an eight-court tennis complex and renovation of grass practice fields.





THE SITE PLAN

Site improvements include the installation of new traffic signals, a new driveway, increased parking, updates to the existing HVAC system, restroom facilities upgrades and an elevator system.



CLASSROOMS

New classrooms boast natural light and collaborative learning spaces. West-facing rooms overlook the new turf field for a one-of-a-kind view.





THANK YOU

**Thank you to our community for
your support of the 2017 Bond.**

In the school district's 75th anniversary year, Spring Branch ISD celebrates the opening of Memorial High School's new Instructional and Cafeteria Building.

Approved by 80 percent of the voters in November, 2017, the 2017 Bond Program continues the transformation of district facilities that began with the 2007 Bond Program.

www.springbranchisd.com/bond

MEMORIAL HIGH SCHOOL
A 2017 BOND PROGRAM PROJECT

