



## **VALLEY OAKS** Elementary School Additions

project advisory team

October 12, 2022 | 3:45pm – 5:00pm

[PAT meeting #2](#)

## MEET THE TEAM



### **Kimberly Christy**

Valley Oaks Elementary School  
Principal

### **Vicki Lullo**

Valley Oaks Elementary School  
Interim Principal

### **Brooke Monteith**

Valley Oaks Elementary School  
Assistant Principal

### **Margie Moerbe**

Valley Oaks Elementary School  
Assistant Principal

### **Travis Stanford**

Associate Superintendent for Operations

### **Geoffrey Bay**

Project Manager



### **Brandon Ross**

Partner

### **Philip Stewart**

Principal

### **Nicole Jordan**

Project Architect / Designer

### **Gloria Carlos**

Senior Project Manager

### **Davilla Lima**

Project Architect

## PAT #2 Meeting AGENDA

**Project & Team Introductions**

**PAT Charge & Team**

**Design Lenses Review**

**Project Overview & Schedule**

**Fact Finding Review**

**Guiding Principles and Goals**

**Floor Plan Review (VISIONING SESSION #1)**

**Next Steps**

## SUPERINTENDENT PROJECT ADVISORY TEAM (PAT) CHARGE

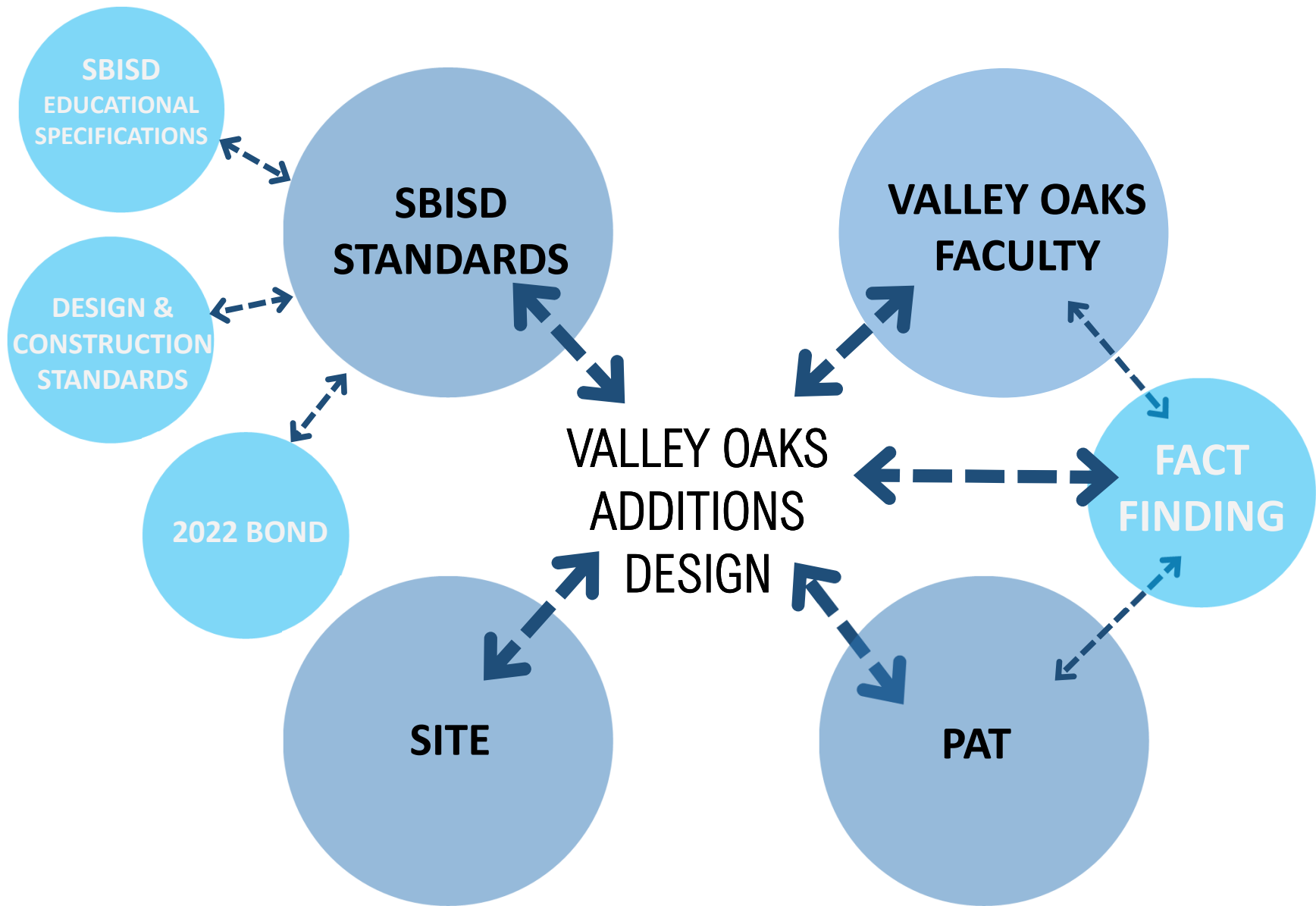
### GOAL

- The goal of the PAT is to ensure that parents, staff and community members have the opportunity to take part in the planning and design of new schools.
- The PAT will meet as needed throughout the project, from initial planning, through design to the start of construction.
- The PAT concludes its work once construction begins.

### CHARGE

- Each Project Advisory Team's (PAT) members are charged with **providing input into planning and design development** for their school's new construction or major renovation project in the 2017 Bond Program.
- The PAT members will **serve as communicators** to and from the community during the design phases of the project and participate in discussions that will lead to recommendations.
- Recommendations will not regard standards, programs, policies, and pedagogy.
- These recommendations will be reached through consensus, and be presented to the Board of Trustees.





## OVERALL PROJECT SCOPE

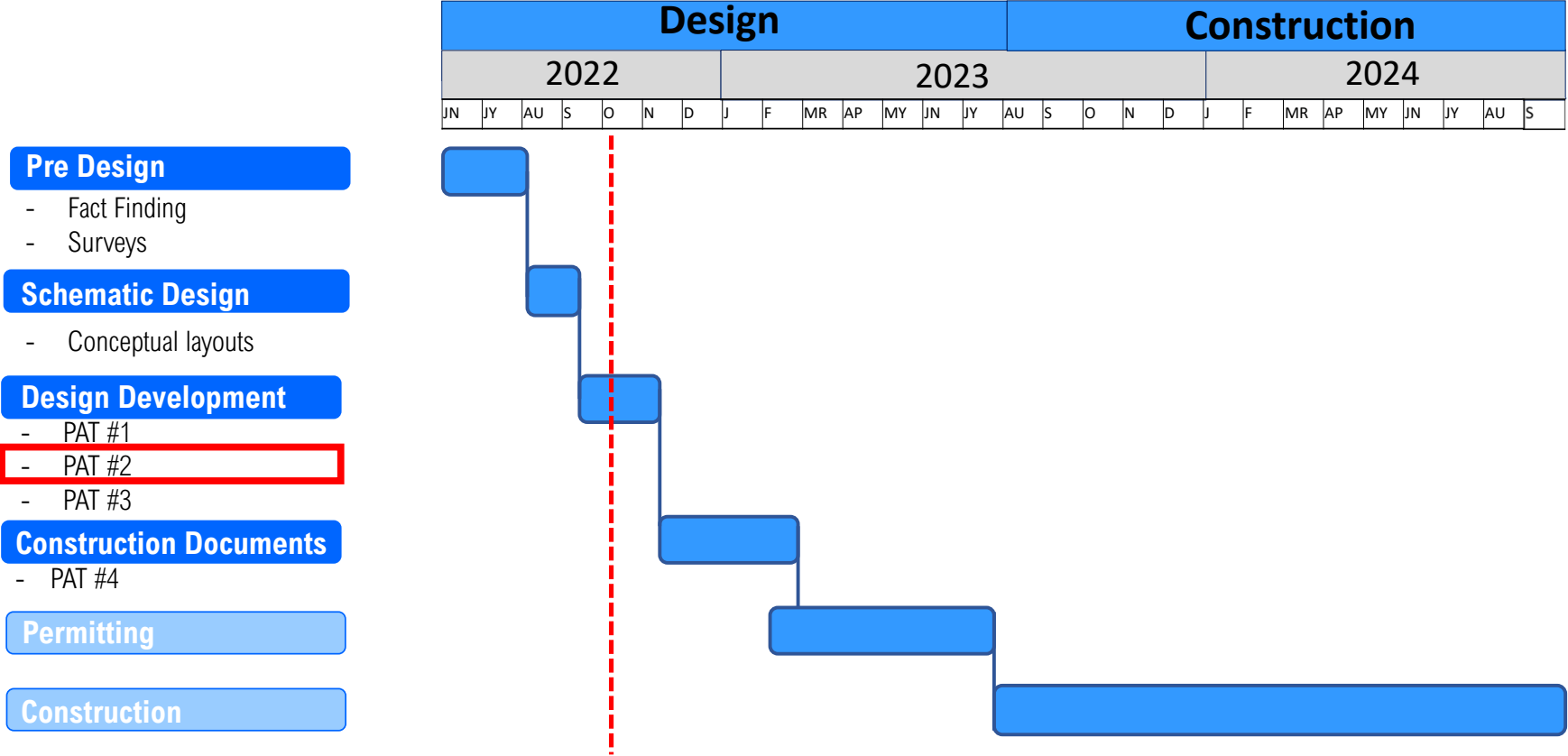
VALLEY OAKS ES ADDITIONS

CLASSROOM AND CAFETERIA ADDITION  
WHILE THE SCHOOL IS IN OPERATION

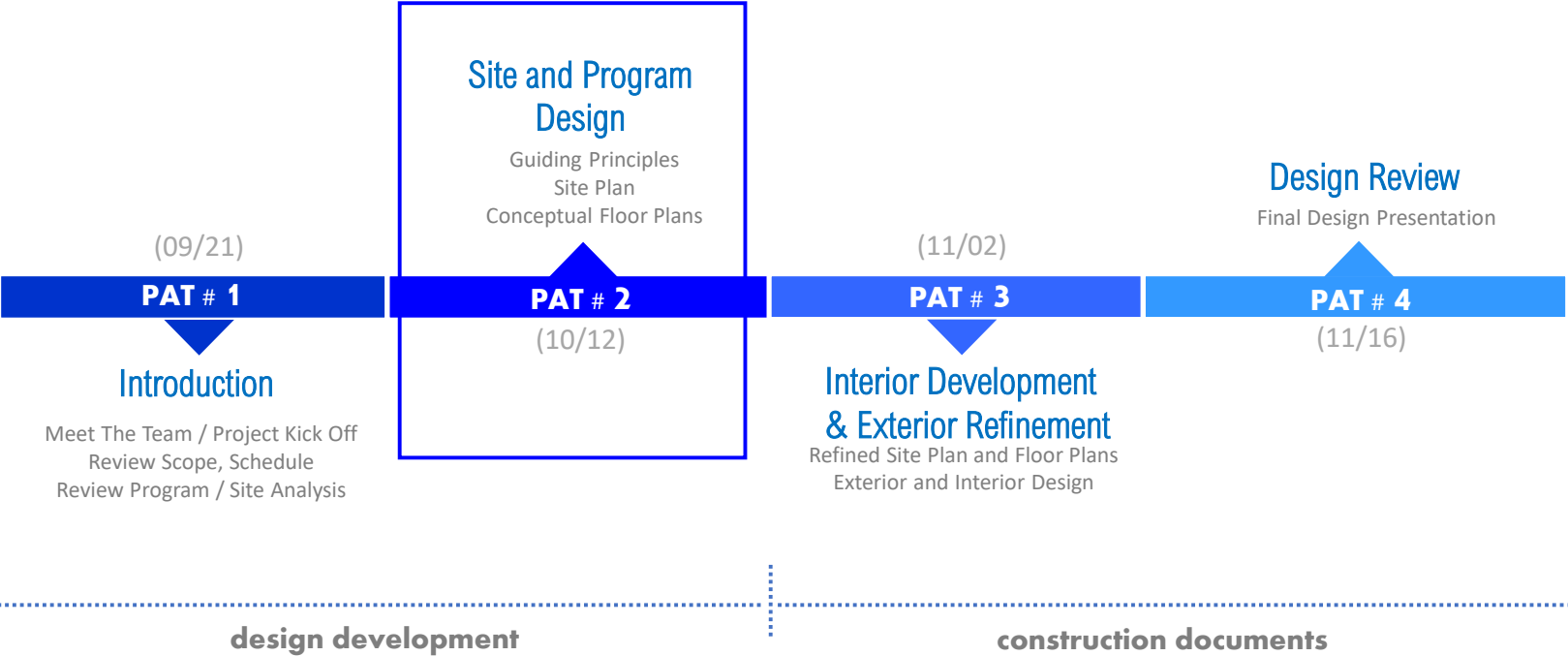
OPENING OF FALL 2024



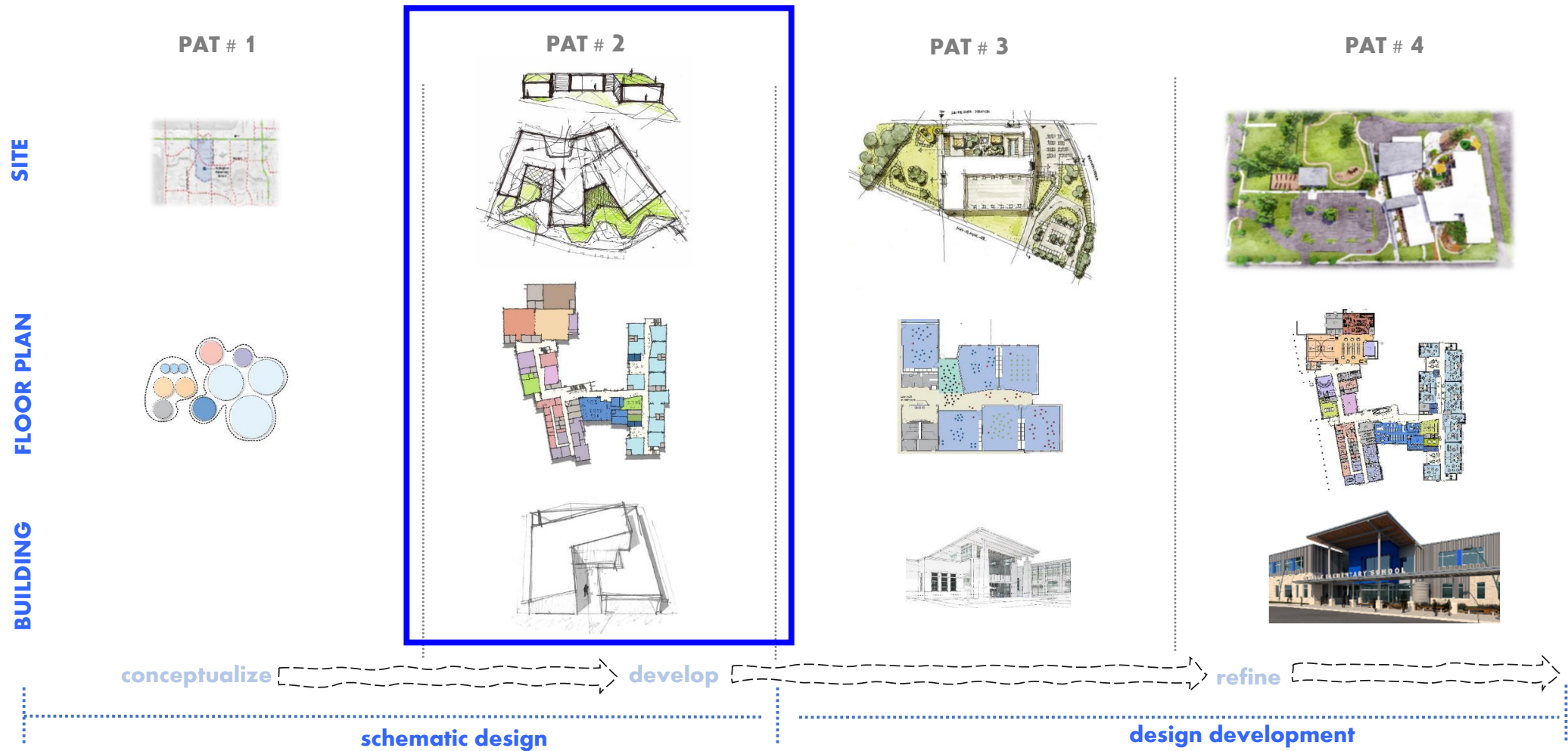
# OVERALL PROJECT SCHEDULE



PAT SCHEDULE DETAIL (meetings 3:45 PM - 5:00 PM)

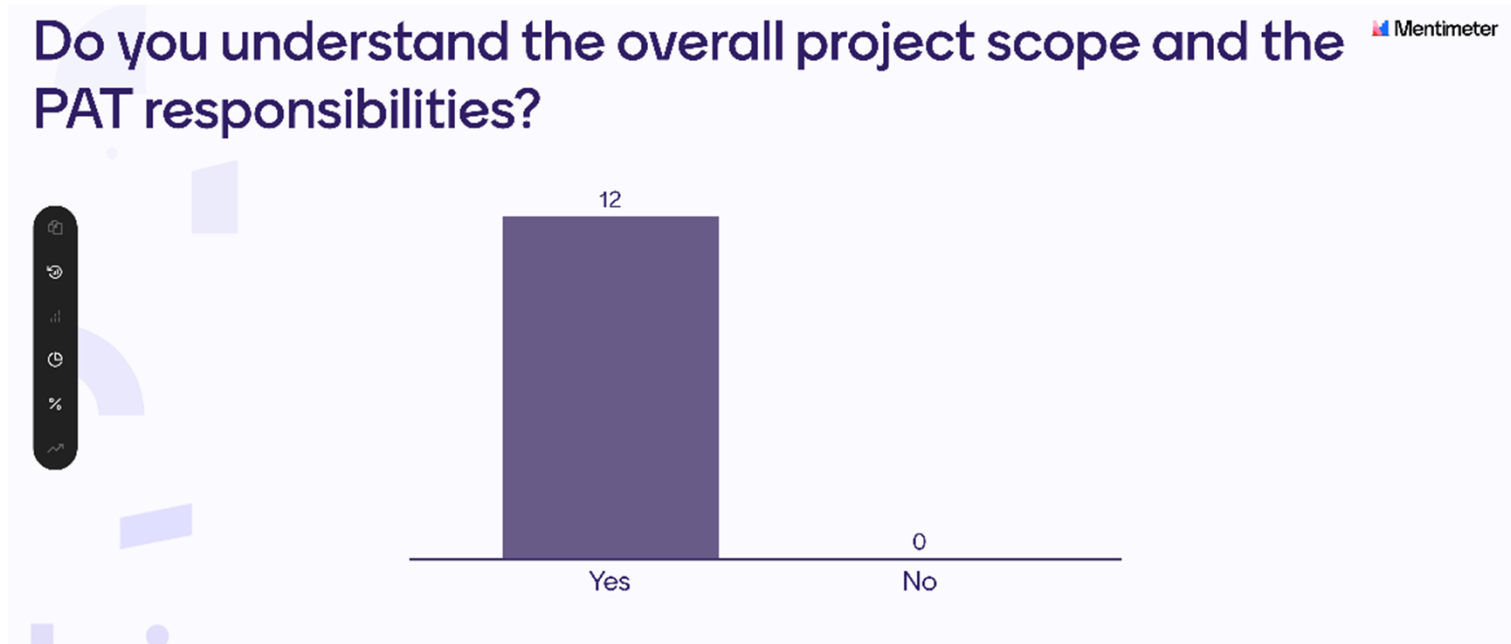


# PAT BUILDING DESIGN PROCESS



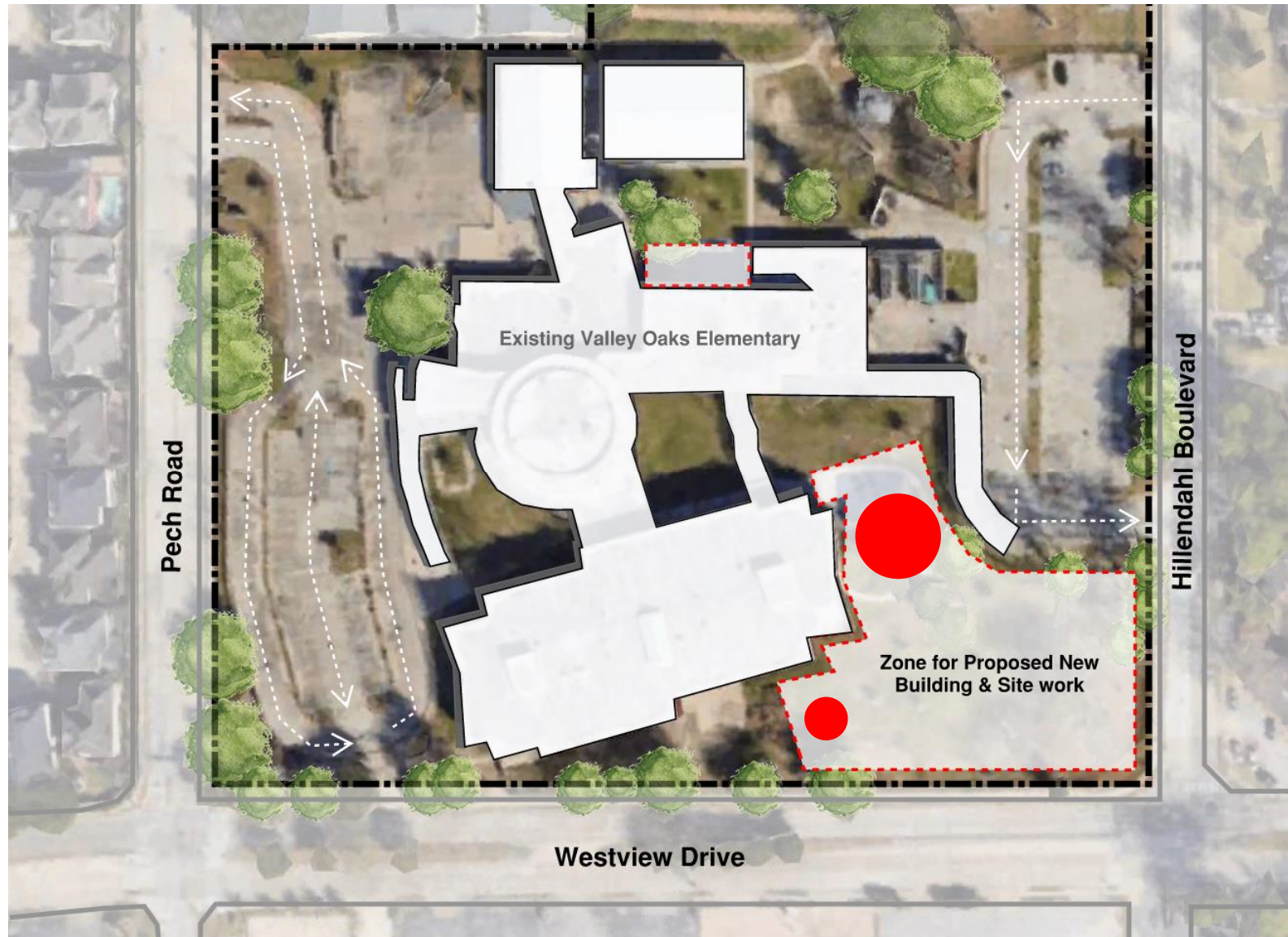
## PAT #1 RECAP

### Poll Results





## PAT #1: RECAP OF IMPACTED AREAS



- Site Buildings
  - Circulation
  - Trees / Play Areas
  - Setbacks
  - Construction Buffers
  - Buildable Area
- Impacted Areas**
- Butterfly Garden
  - Play Area

## PAT #1: RECAP OF CIRCULATION



- Heavy foot traffic from Pech & Westview
- Students enter from Pech entry only
- Staff can enter from Pech entry or Hillendahl
- Carpool causes backup on Pech to Westview
- During afternoon dismissal students can leave from either side



# *What you wrote...*

## PAT #1 RECAP

### Question 1

**Describe what helps make Valley Oaks ES so special and unique?**



**60% - INVITING COMMUNITY, WARM AND WELCOMING, NEIGHBORHOOD FEEL**

**53% - FACULTY AND STAFF ARE EXCELLENT EDUCATORS AND PEOPLE**

**46% - GREAT BUILDING AND / OR CAMPUS**

**40% - BUILDING DESIGN REINFORCES COMMUNITY**

**33% - PARENT / COMMUNITY INVOLVEMENT**

**26% - COLLABORATION / WORKING TOGETHER**

## *What you wrote...*

### PAT #1 RECAP

#### Question 2

**Describe what are your three favorite aspects of the existing campus?**



**86% - WINDOWS / NATURAL LIGHT**

**60% - PODS / COLLABORATIVE AREAS**

**40% - PLAYGROUNDS / SPARK PARK**

**40% - SPACIOUS, OPEN AND BRIGHT**

**33% - COLORFUL / ART / MURALS**

## *What you wrote...*

### PAT #1 RECAP

#### Question 3

**What aspect of the existing building would you like to replicate, reinforce, or emphasize in the Addition?**



**92% - PODS / FLEX AREAS**

**78% - WINDOWS**

**50% - SINKS IN THE HALLWAY**

**42% - PLANNING ROOMS**

**21% - KEEP THE GRADES TOGETHER**

**21% - LARGER CAFETERIA**

## PAT #1 RECAP

- **WINDOWS / NATURAL LIGHT**
- **PLAYGROUNDS / SPARK PARK**

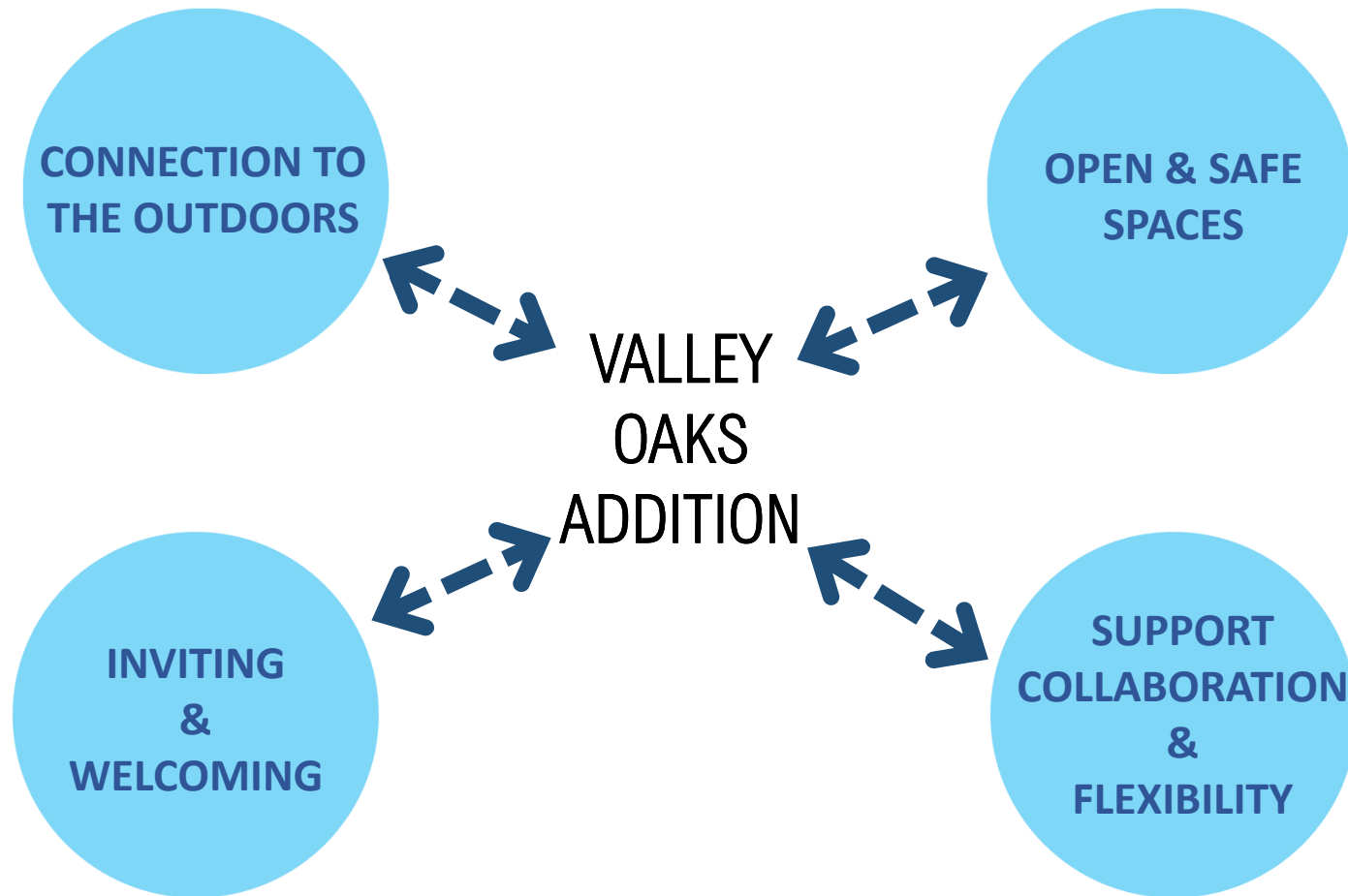
- **GREAT BUILDING AND / OR CAMPUS**
- **SPACIOUS, OPEN AND BRIGHT**
- **SINKS IN THE HALLWAY**
- **LARGER CAFETERIA**

- **INVITING COMMUNITY, WARM AND WELCOMING, NEIGHBORHOOD FEEL**
- **PARENT / COMMUNITY INVOLVEMENT**
- **COLORFUL / ART / MURALS**
- **FACULTY AND STAFF ARE EXCELLENT EDUCATORS AND PEOPLE**

- **COLLABORATION / WORKING TOGETHER**
- **PODS / FLEX AREAS**
- **PLANNING ROOMS**
- **KEEP THE GRADES TOGETHER**

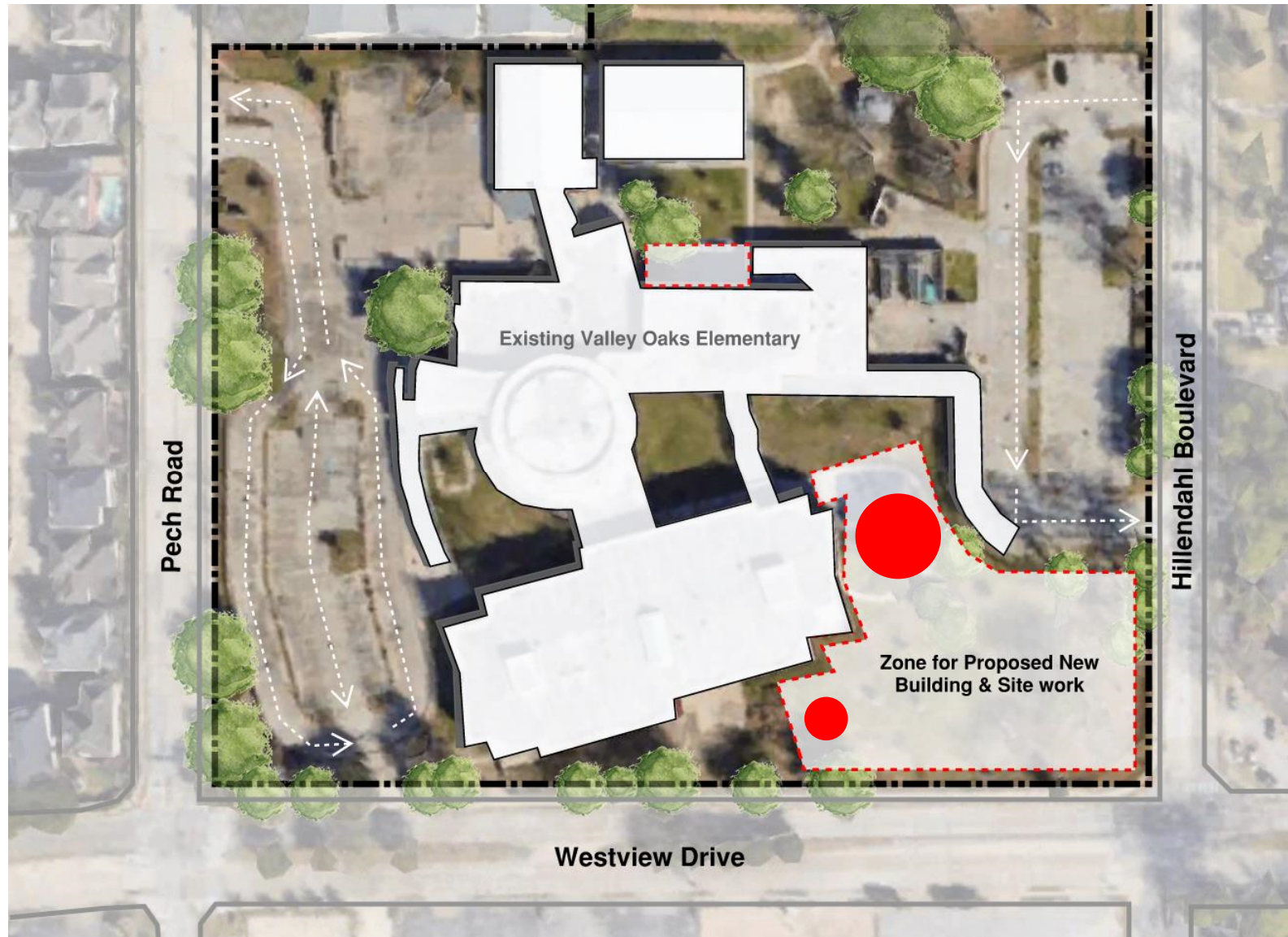
## PAT GUIDING PRINCIPLES

We take these with us moving forward



# DESIGN UPDATE

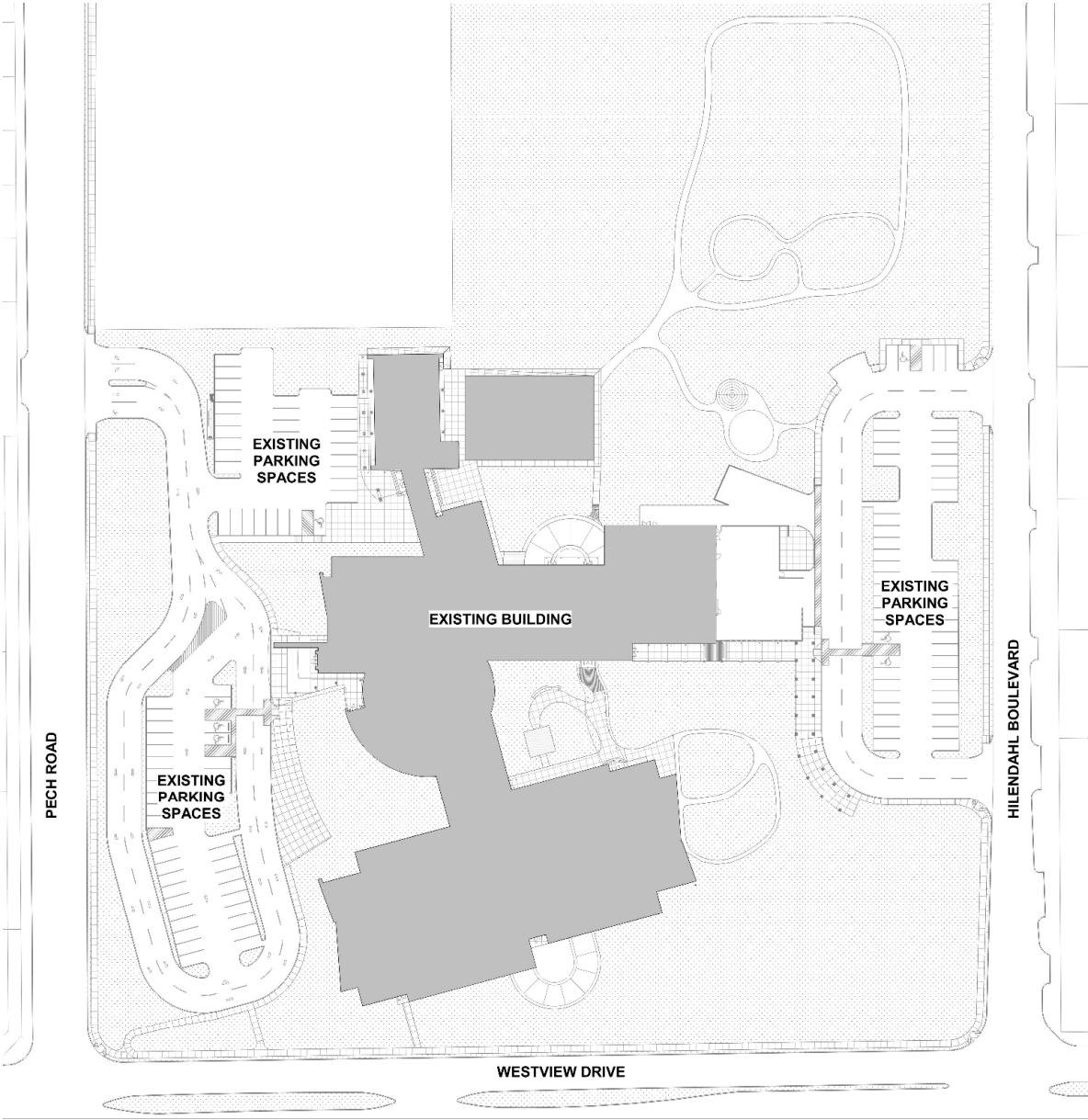
## PAT #1: RECAP OF IMPACTED AREAS



- Site Buildings
  - Circulation
  - Trees / Play Areas
  - Setbacks
  - Construction Buffers
  - Buildable Area
- Impacted Areas**
- Butterfly Garden
  - Play Area

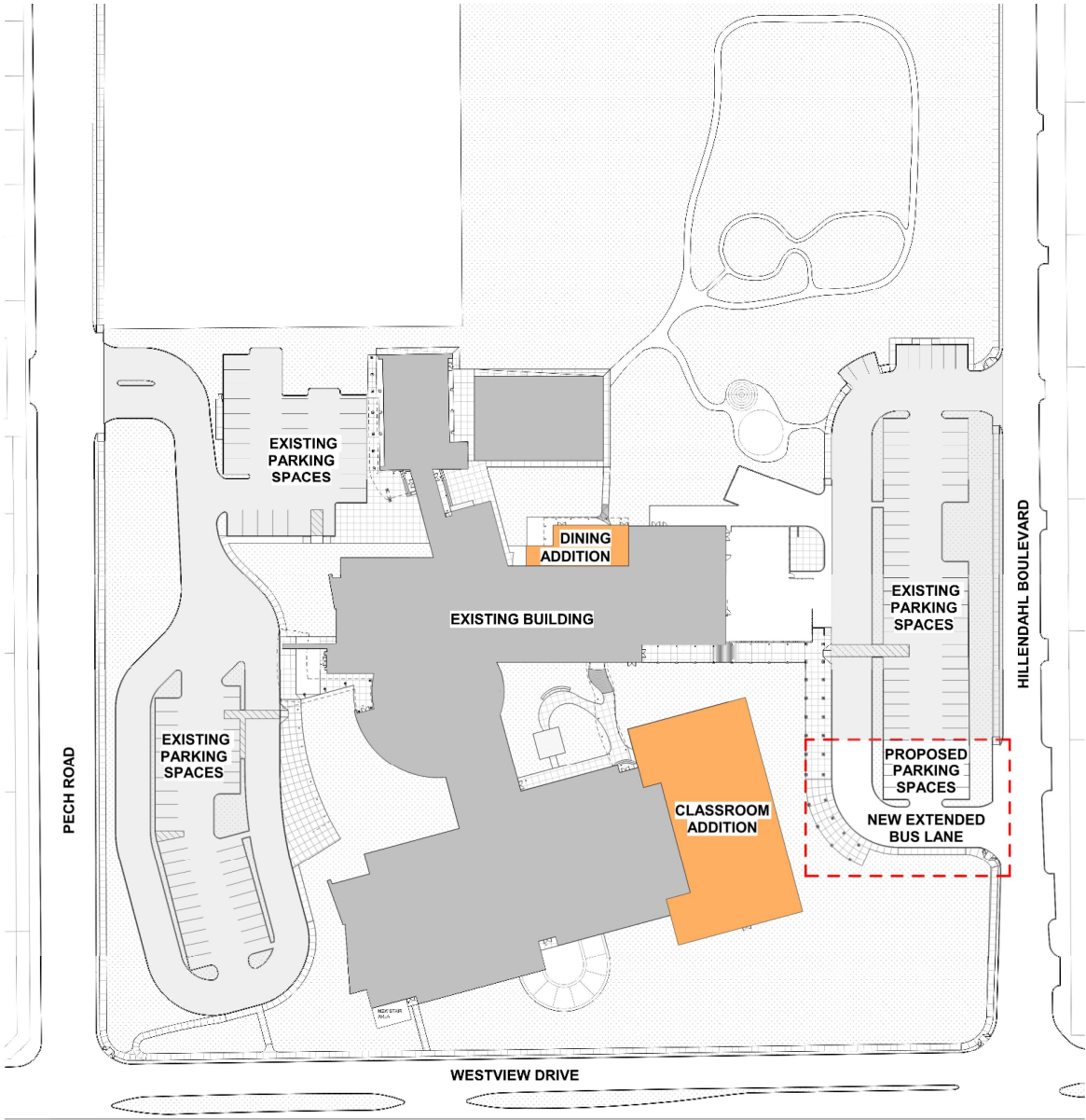


EXISTING SITE PLAN



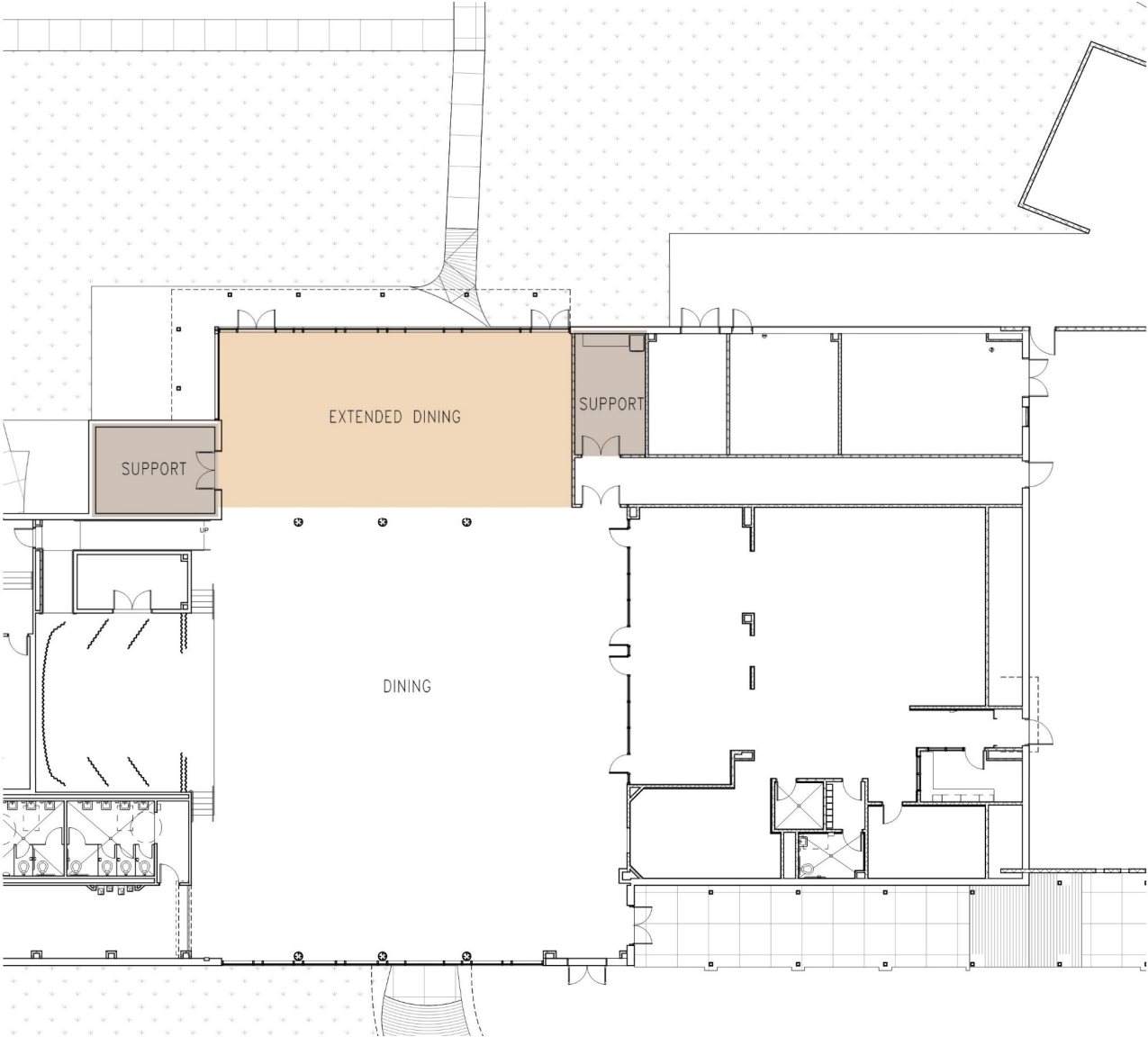


PROPOSED SITE PLAN

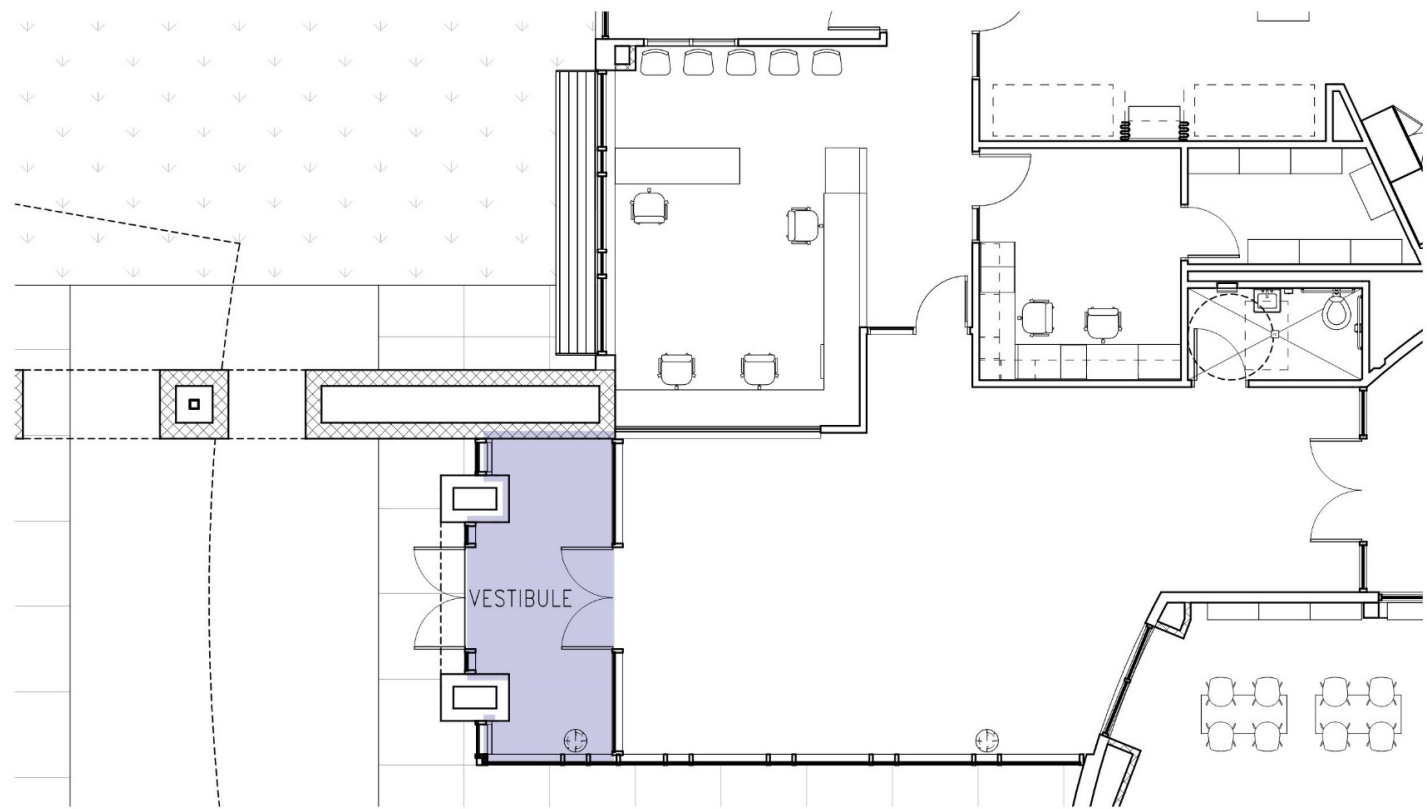


# **SITE PLAN COMMENTS?**

# CAFETERIA FLOOR PLAN



VESTIBULE FLOOR PLAN

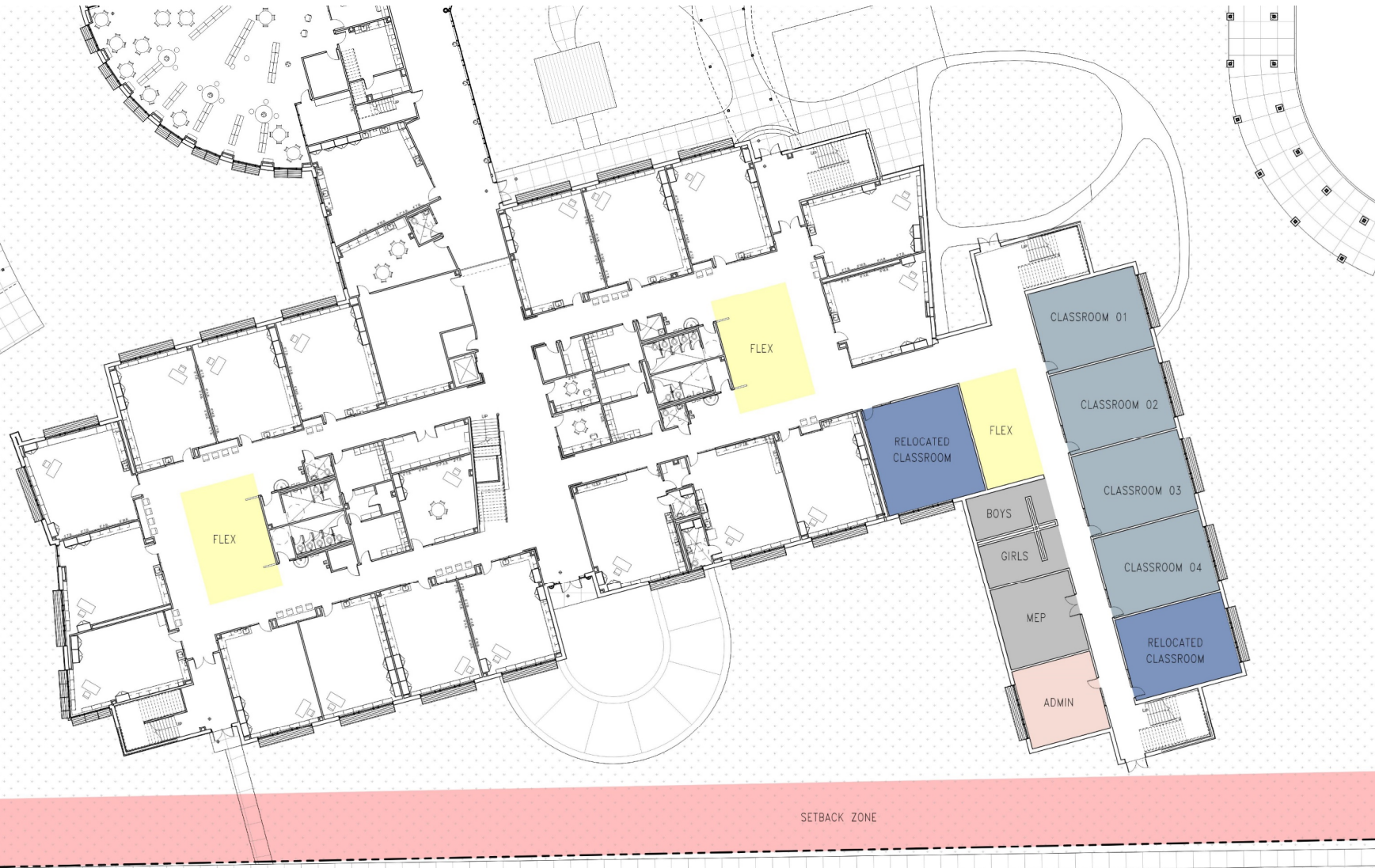


## CLASSROOM WING FLOOR PLANS – EXISTING FLOOR PLAN





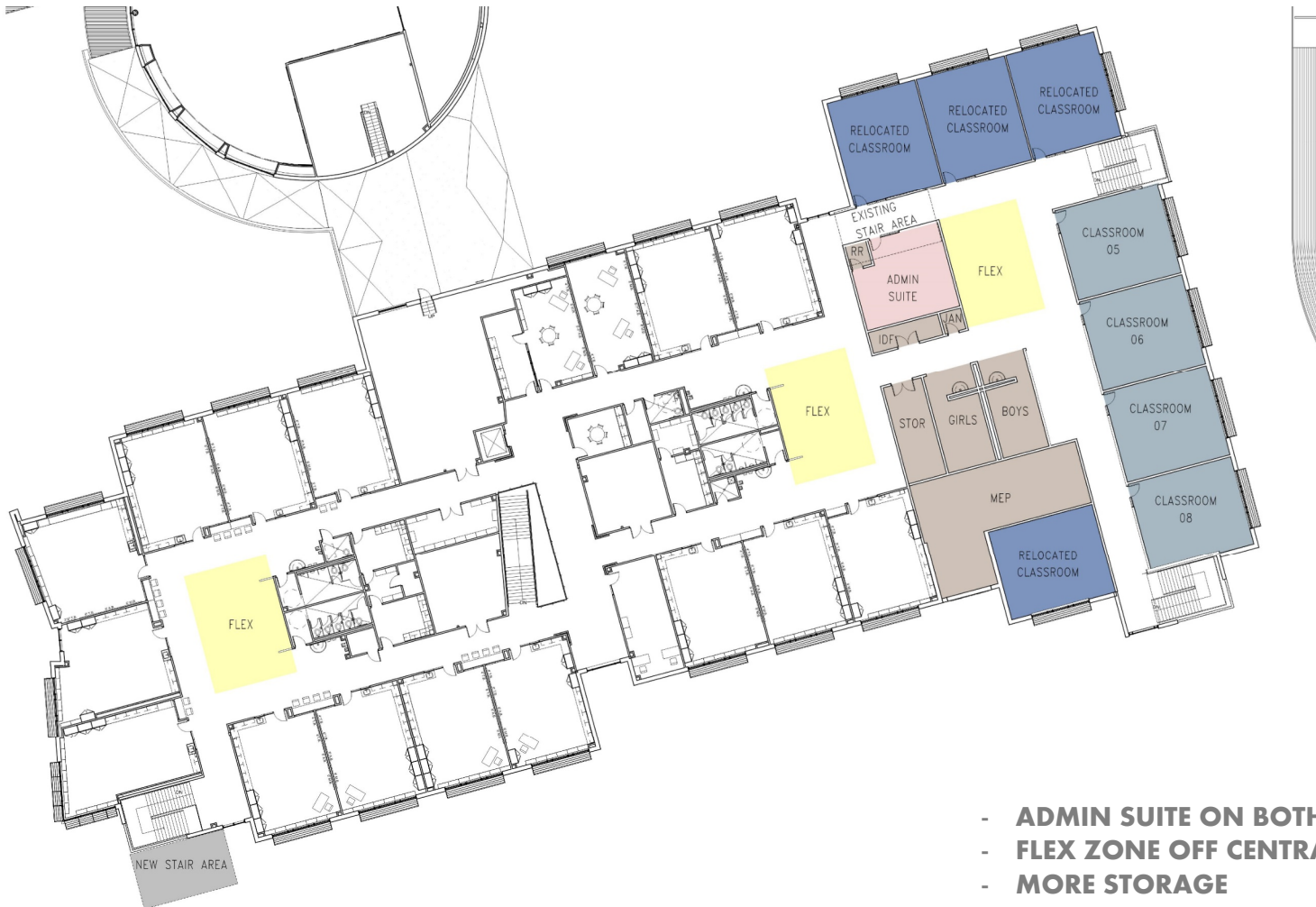
# CLASSROOM WING FLOOR PLAN – FLOOR PLAN EXPLORATION



## CLASSROOM WING FLOOR PLANS – PROPOSED OPTION A – LEVEL 01



## CLASSROOM WING FLOOR PLANS – PROPOSED OPTION A – LEVEL 02



- ADMIN SUITE ON BOTH FLOORS
- FLEX ZONE OFF CENTRAL CORRIDOR
- MORE STORAGE



CLASSROOM WING PERSPECTIVES—  
PROPOSED OPTION A



VIEW FROM WESTVIEW DRIVE



SOUTH ELEVATION - WESTVIEW DRIVE

## CLASSROOM WING FLOOR PLANS – PROPOSED OPTION B – LEVEL 01



- ADMIN SUITE ON THE FIRST FLOOR
- ADMIN GETS DAYLIGHT
- FLEX ZONE CENTRALLY LOCATED

## CLASSROOM WING FLOOR PLANS – PROPOSED OPTION B – LEVEL 02



- **FLEX ZONE CENTRALLY LOCATED**
- **EXTRA CLASSROOM**

CLASSROOM WING PERSPECTIVES—  
PROPOSED OPTION B



VIEW FROM WESTVIEW DRIVE



SOUTH ELEVATION - WESTVIEW DRIVE

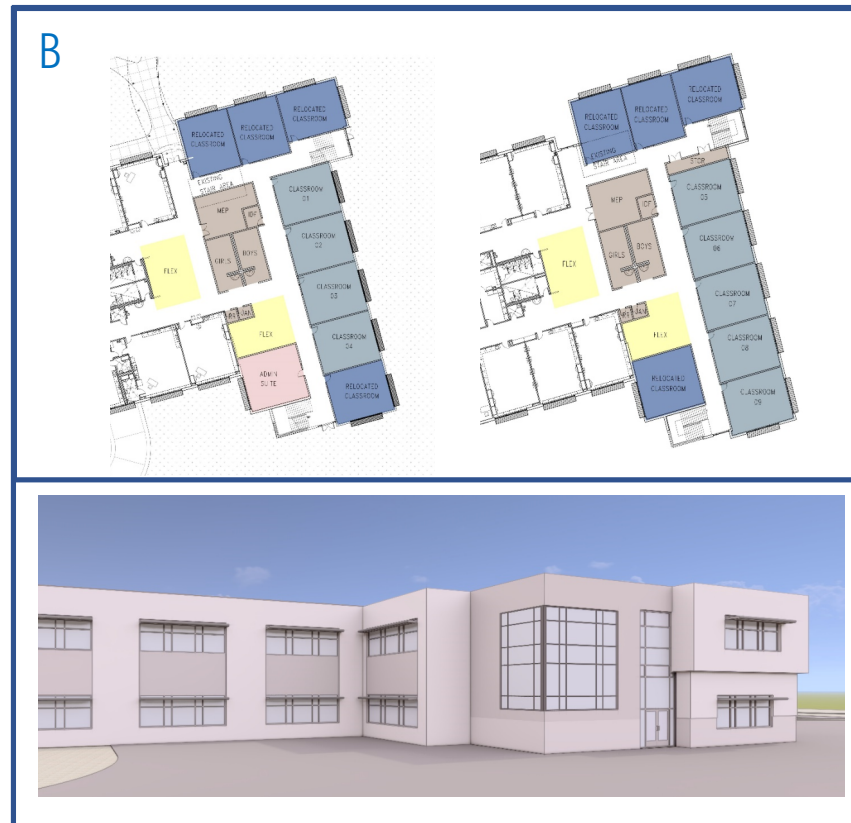
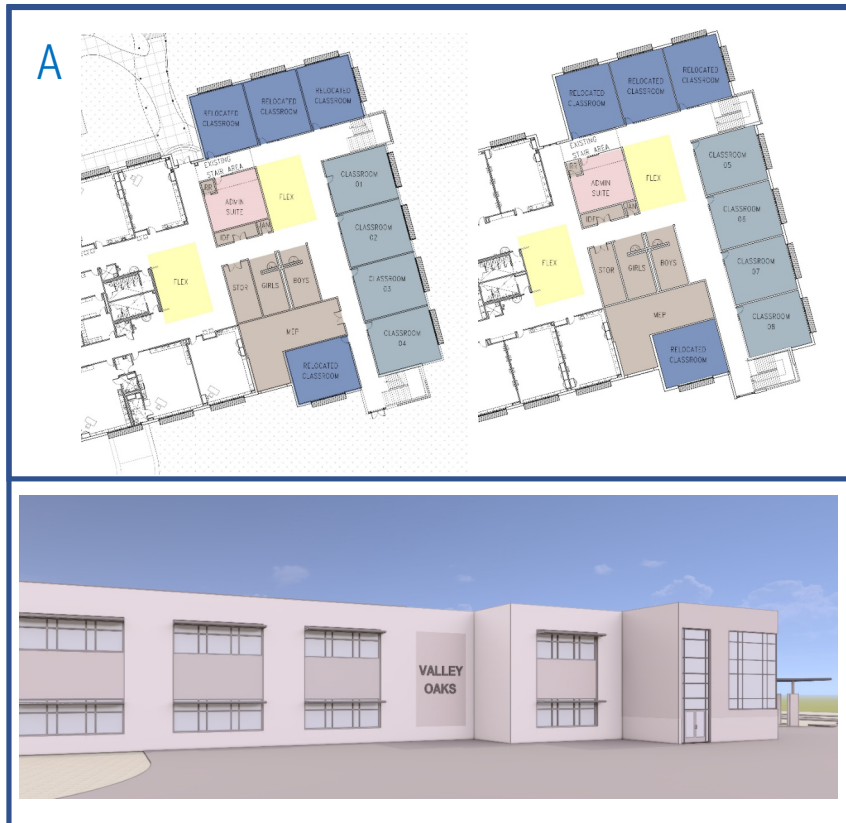


## GROUP ACTIVITY

### REVIEW ALL OPTIONS:

WHICH OPTION DO YOU PREFER?

BE PREPARED TO SHARE THESE POINTS AND PREFERENCES WITH THE LARGER GROUP



POLLING QUESTION

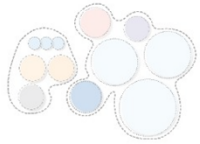
[WWW.MENTI.COM](https://www.menti.com)

CODE: 7471 0966

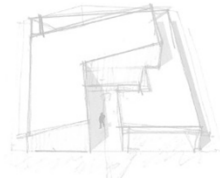
**IS THE SITE PLAN AND OVERALL PAT PROGRESS  
HEADED IN THE RIGHT DIRECTION?**

## PAT BUILDING DESIGN PROCESS

PAT # 1



PAT # 2



PAT # 3



PAT # 4



**Next PAT meeting**

November 2, 2022 3:45 PM – 5:00 PM



**Thank you!**

**Valley Oaks Elementary School**