



2017 BOND PROJECTS – BOARD UPDATE

Bunker Hill ES Replacement

Spring Branch Independent School District

Stantec Project No. 214000788

July 31, 2022

1) **PROJECT TEAM:**

Owner:	Spring Branch ISD	Assoc. Supt. For Operations:	Travis Stanford
		Director of Planning & Construction:	Max Buja
SBISD Project No.	67224	Project Managers:	Geoff Bay
Architect:	Stantec Architecture, Inc.	Partner-in-Charge:	Jennifer Henrikson
		Project Manager:	Gary Dunn
CM@Risk:	Durotech		

2) **GENERAL SCOPE OF WORK:**

Replacement of Bunker Hill Elementary School with new 700 student campus on existing site. Scope includes demolition of existing campus, construction of new building and associated site work.

Off-Site Transition:

Transition will be done on-site as determined feasible in Summer 2019 Test Fit Study

3) **BOND PLAN PROJECT TIMELINE:**

PROJECT ADVISORY TEAM	JANUARY 2020 – AUGUST 2020
CM@R SELECTION	MARCH 2020
PROGRAMMING/FACT FINDING	OCTOBER 2019 – DECEMBER 2019
SCHEMATIC DESIGN	JANUARY 2020 – APRIL 2020
DESIGN DEVELOPMENT	APRIL 2020 – JUNE 2020
CONSTRUCTION DOCUMENTS	JUNE 2020 – SEPTEMBER 2020
PERMIT RECEIVED	JANUARY 2021
BIDDING / BOARD APPROVAL	SEPTEMBER 2020 – NOVEMBER 2020
CONSTRUCTION PHASE	DECEMBER 2020 – OCTOBER 2022
OCCUPANCY	JULY 2022

Current
Point

4) **PROJECT STATUS OVERVIEW**

Project is in Construction phase.

5) **PAST 2-4 WEEKS PROJECT HIGHLIGHTS / MILESTONES:**

- Temporary Certificate of Occupancy
- Site Paving and Utilities
- Begin Landscaping
- Complete Interiors



Stantec

Stantec Architecture Inc.
910 Louisiana Street, Suite 2600, Houston TX 77002

6) NEXT 2-4 WEEKS PROJECT HIGHLIGHTS / MILESTONES:

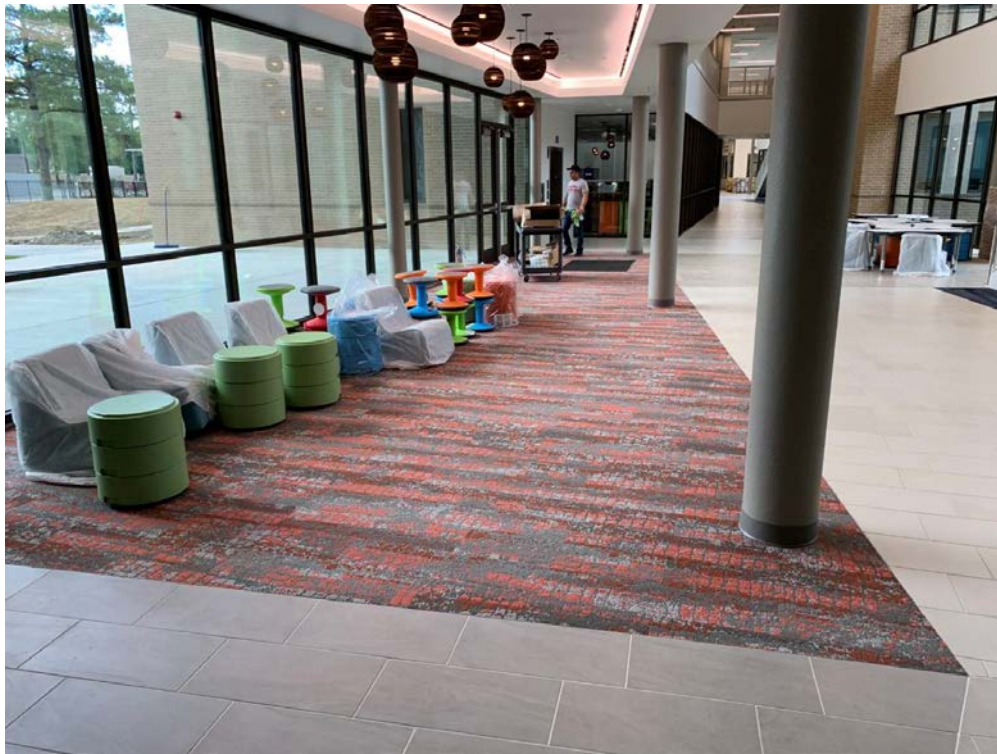
- Complete Sitework
- School Starts!

7) PHOTOGRAPHS:

Main Entry



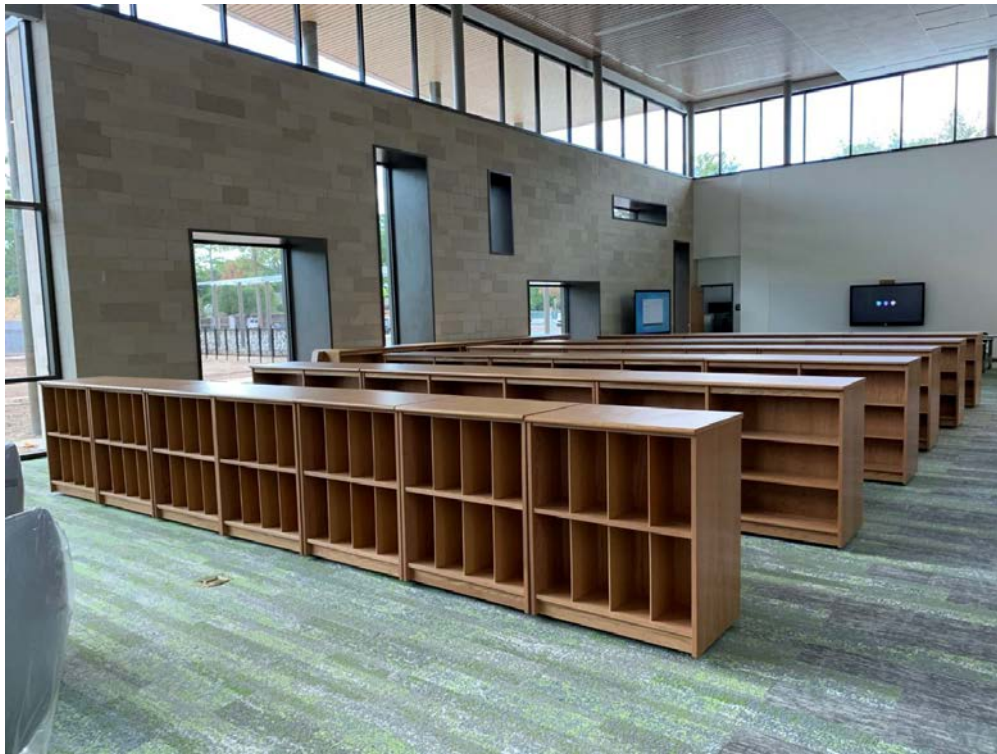
Flex Area at Mian Corridor



Re-creation of Silhouette Graphic at Main Entry Lobby



Library Interior



Multi Purpose Room



New Trees Staged for Installation



Forming Landscape Berm



Decorative Fence at Learning Plaza



Forming Sidewalk and Bus Drop Off Canopy



Approach to Main Entry



Marquee Sign





Stantec

Stantec Architecture Inc.
910 Louisiana Street, Suite 2600, Houston TX 77002

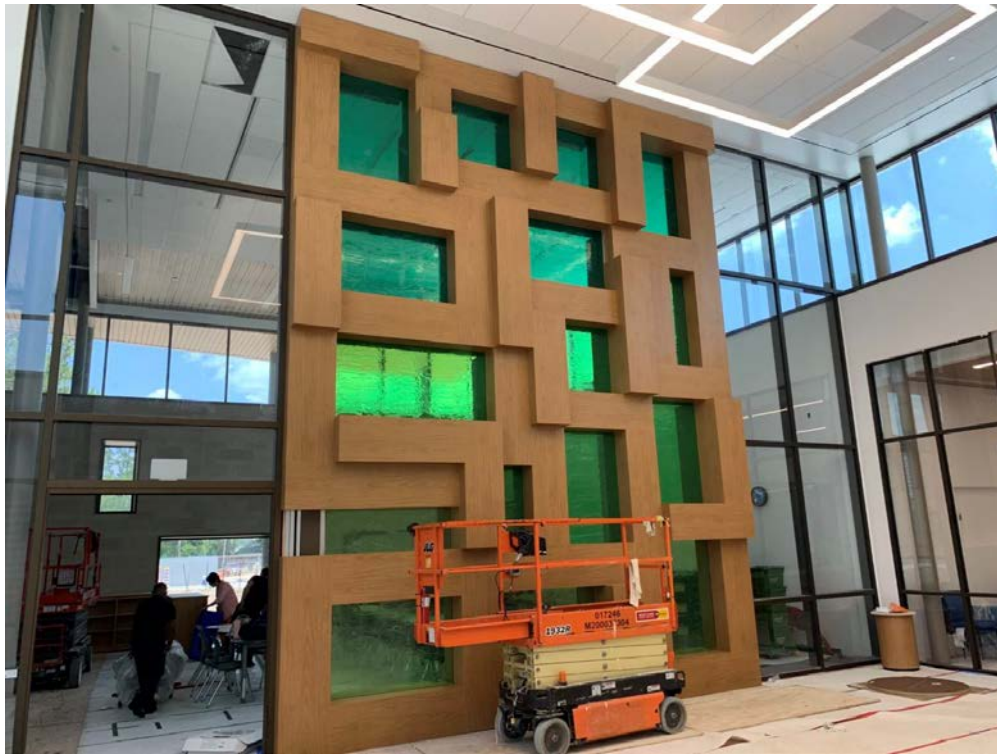
Playground Subgrade Structure



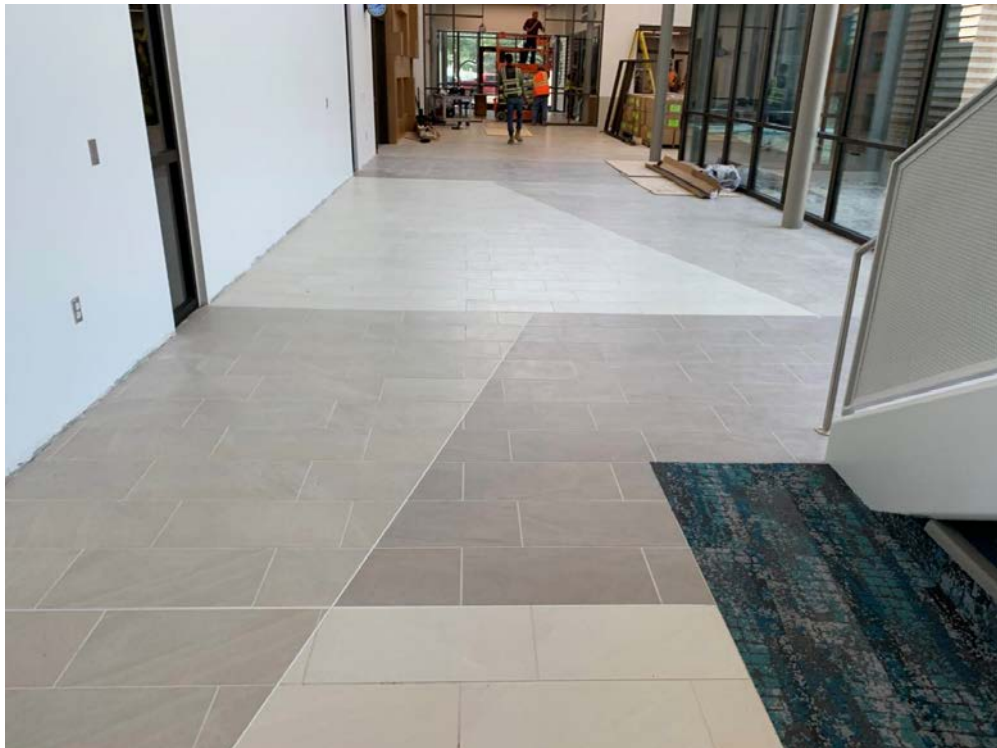
Reception Desk



Jenga Wall



Main Corridor Floor Tile



Lion Graphic at Entry



Dining Interior



Gym Interior



Resource Classroom

