

An architectural rendering of a modern building with a large glass facade and a flat roof. The building is surrounded by trees and landscaping. In the foreground, there are some people walking on a path. The overall scene is bright and clear.

THE GUTHRIE CENTER

PAT MEETING #2: EXPLORING LAYOUT

January 25, 2023 : 4:00pm – 5:45pm

PRK

MEET THE TEAM!

WELCOME & INTRODUCTIONS

SBISD

Joe Kolenda

The Guthrie Center Principal

Nicole Henneke

CTE Coordinator

Christina Rice-Imumwen

Career and Technical Education Director

Lance Stallworth

Executive Director, Student Support Services

Dr. Kristin Craft

Associate Superintendent for Academics

Travis Stanford

Associate Superintendent for Operations

Geoff Bay

Project Manager

PBK ARCHITECTS

Brandon Ross

Partner

Melissa Turnbaugh

Partner

Richard Chi

Co-CEO

Daniel De La Garza

Principal / Senior Designer

Jeff Chapman

Principal

TODAY'S AGENDA

We are so excited to continue the Project Advisory Team (PAT) process with you!

1. OVERVIEW & PAT PROCESS
2. PAT #1 RECAP
3. PAT #1 RECAP: GUIDING PRINCIPLES
4. PROGRAM REVIEW
5. PAT #2 ENGAGEMENT: BUILDING ORGANIZATION
6. NEXT STEPS

1. OVERVIEW & PAT PROCESS

2. PAT #1: RECAP

3. PAT #1 RECAP: GUIDING PRINCIPLES

4. PROGRAM REVIEW

5. PAT #2 ENGAGEMENT: BUILDING ORGANIZATION

6. NEXT STEPS

PAT CHARGE

OVERVIEW

Project Advisory Teams (PAT) are essential participants in the planning and design process. The Guthrie PAT members are **charged with providing input into planning and design development for the facility's new construction project** under the 2022 Bond Program. The PAT will meet as needed throughout the project, from initial planning, through design to the start of construction. Team members are asked to agree to participate in various meetings throughout the process.

Meeting agendas and minutes will be posted on Guthrie's bond project website.

At the start of the project, representatives of the project architectural firm and the SBISD Project Manager will inform the PAT of the general project scope (new construction) and the proposed schedule of the work.

PAT CHARGE

CHARGE

The PAT will work collaboratively and cooperatively with the architect and SBISD Project Manager to conceptualize, develop and refine the project's goals and design. The PAT will work with the architect and the SBISD Planning & Construction staff to ensure meeting the project's scope and schedule as defined by the 2022 Bond Program. The PAT will reach proposed recommendations through consensus.

Any concerns identified by the PAT members should immediately be brought to the attention of the SBISD Guthrie Project Manager.

The PAT will advise on recommendations regarding the interior and exterior appearance of the campus. Recommendations are subject to review and change by district administration. Recommendations will be presented by the project's architects to the Superintendent of Schools and based on approval from the Superintendent will then be presented to the Board of Trustees for their feedback. All recommendations must be in alignment with the District's Career and Technical Education Educational Specifications and Design and Construction Standards.

Areas of focus from which the PAT should refrain include recommendations regarding school and/or CTE programs, policies and procedures, boundaries of district facilities, instructional arrangements and/or educational pedagogy decided upon and/or subject to District, State and Federal laws.

Project Advisory Teams are essential participants in the planning and design process. Team members are asked to agree to participate in various meetings throughout the process.

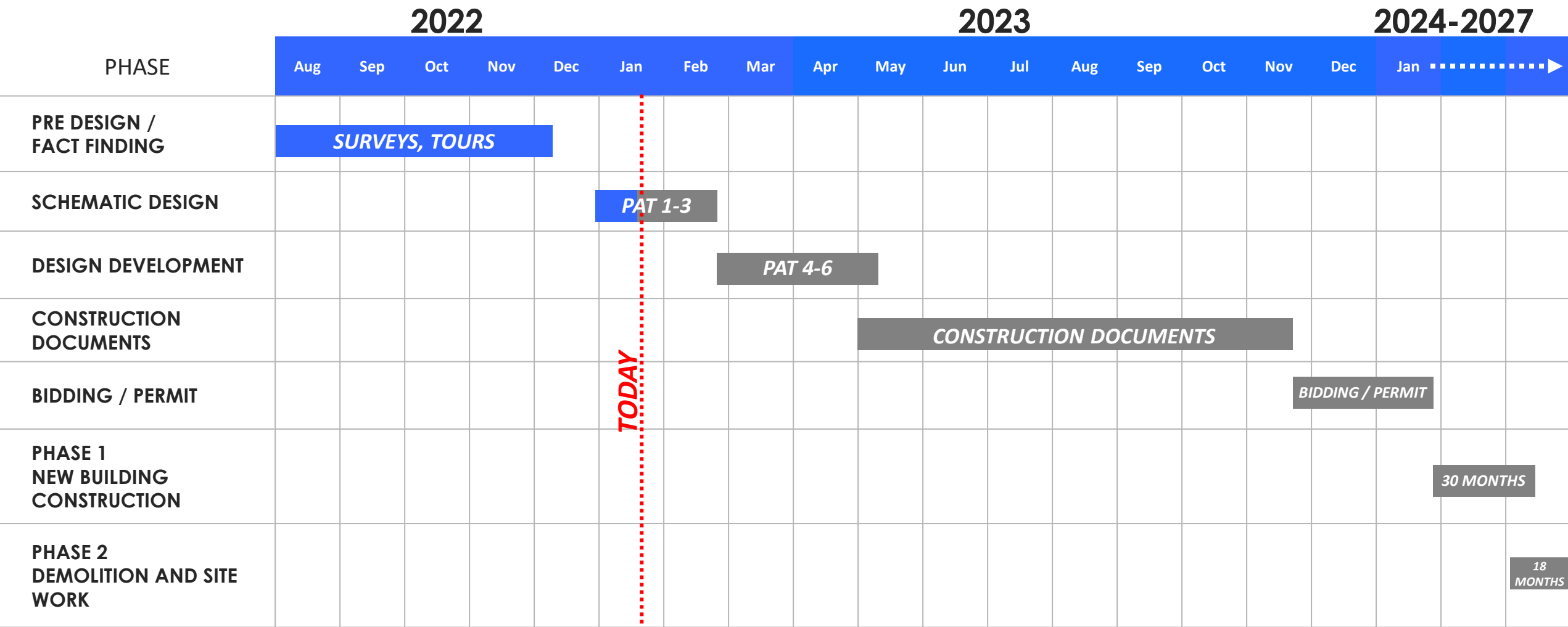
| 2022 BOND PROJECT SCOPE

PROPOSITION A OF THE 2022 BOND PROVIDES FUNDING TO REBUILD THE GUTHRIE CENTER

- BUILD NEW CTE CENTER ON CURRENT SITE WHILE EXISTING CENTER IS OPEN
- **PHASE 1:** CONSTRUCTION OF NEW GUTHRIE CENTER
- **PHASE 2:** DEMOLITION OF EXISTING CENTER WITH ADDITIONAL SITE WORK
- 30-48 MONTH CONSTRUCTION DURATION
- **LATE 2027 COMPLETION**



PROJECT ESTIMATED SCHEDULE

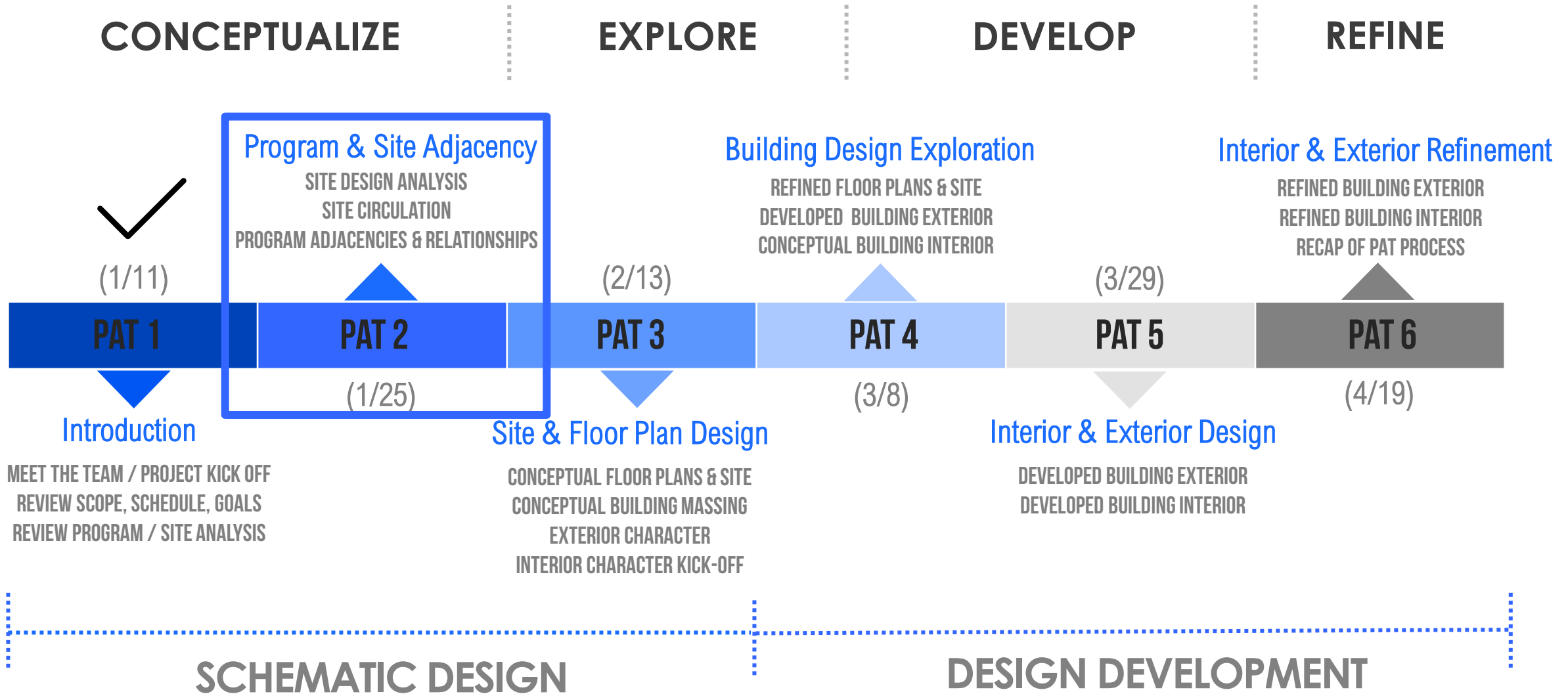


TODAY

LATE 2027 COMPLETION



PAT PROCESS





EVOLUTION OF CONCEPT AND FORM

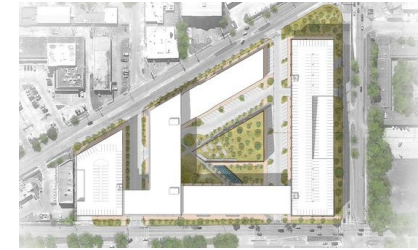
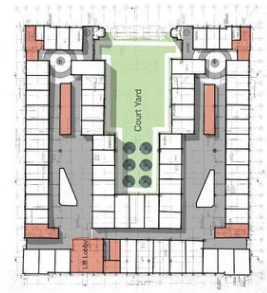
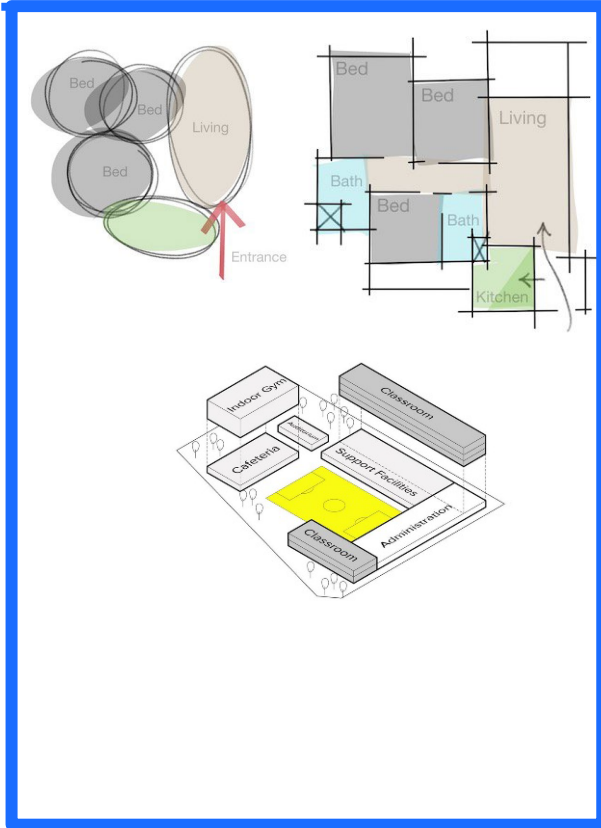
GOALS

CONCEPTUALIZE

EXPLORE

DEVELOP

REFINE



PAT 1

PAT 2

PAT 3

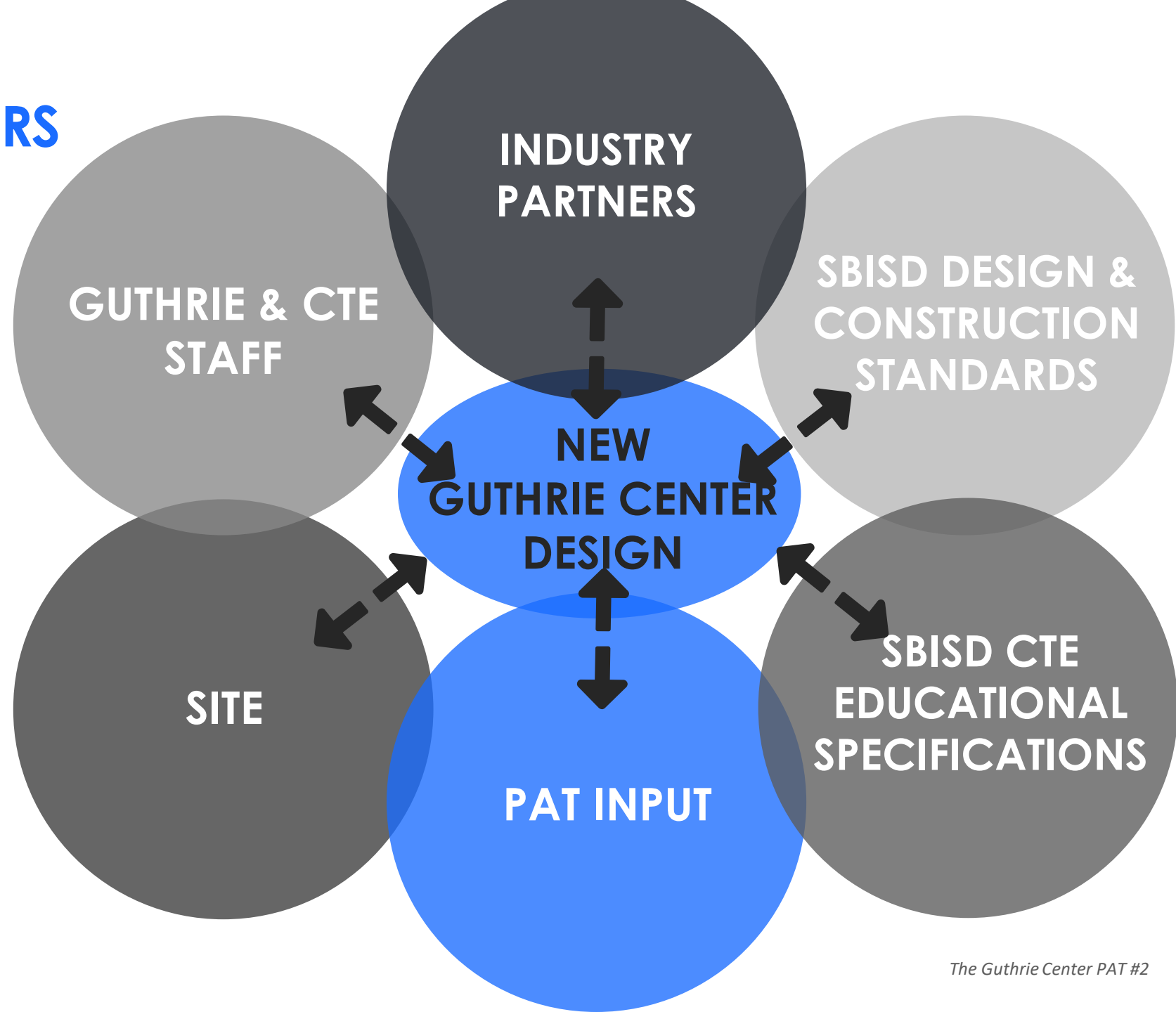
PAT 4

PAT 5

PAT 6



DESIGN FILTERS

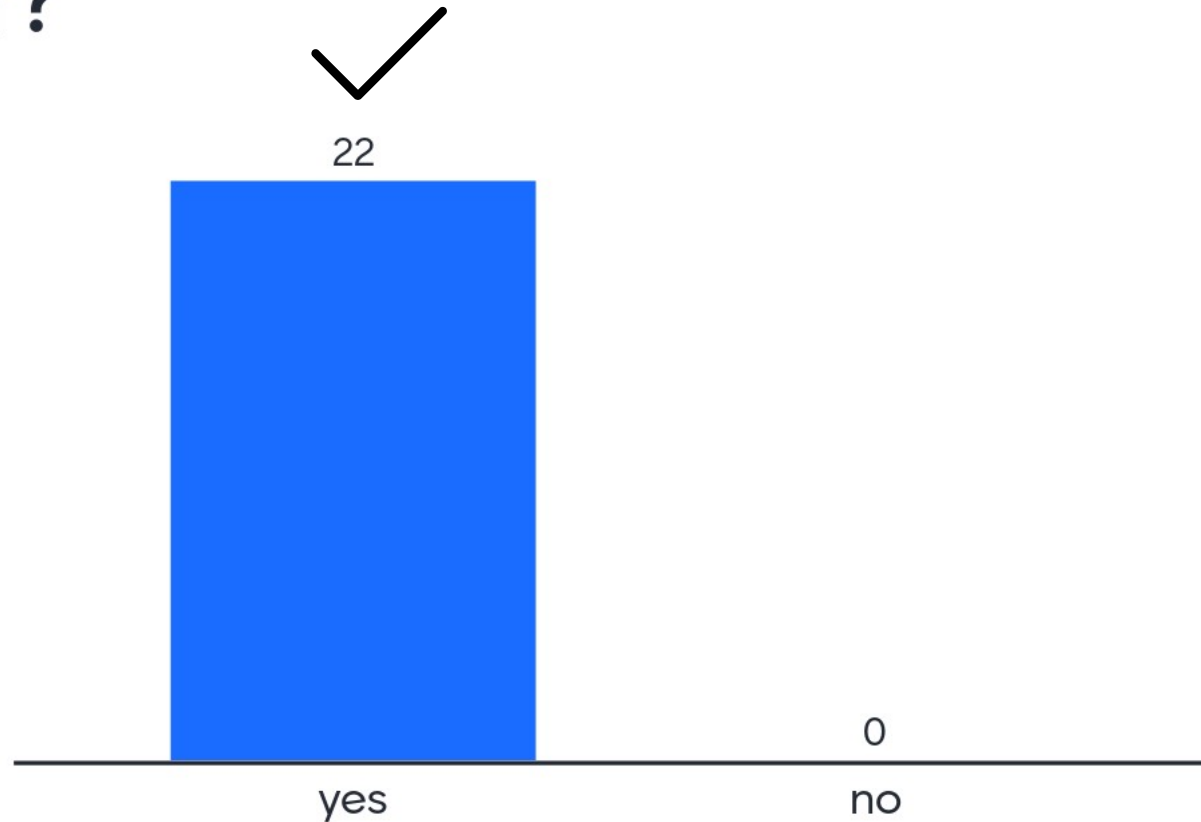


PAT #1 POLL

Are we heading in the right direction for the new Guthrie Center?

 Mentimeter

POLL RESULT



1. OVERVIEW & PAT PROCESS

2. PAT #1: RECAP

3. PAT #1 RECAP: **GUIDING PRINCIPLES**

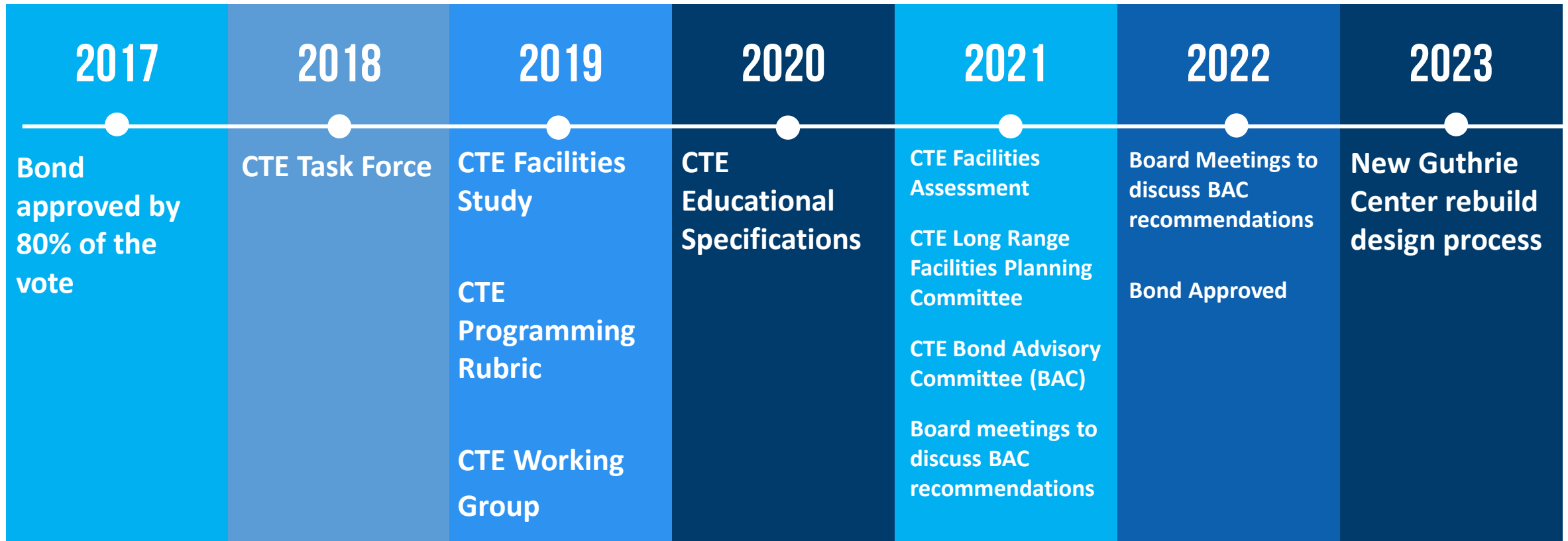
4. PROGRAM REVIEW

5. PAT #2 ENGAGEMENT: **BUILDING ORGANIZATION**

6. NEXT STEPS

PAT #1 RECAP **TIMELINE & CONTEXT**

WE ARE HERE!



PAT #1 RECAP **FACT FINDING**

GUTHRIE CENTER TOUR



HOUSTON AREA CTE TOURS



BUSINESS AND INDUSTRY CONVENINGS



DALLAS AREA CTE TOURS



CEO ROUNDTABLE



GUTHRIE AND CTE STAFF INPUT



PAT #1 RECAP **FACT FINDING**

WHAT THREE WORDS DESCRIBE THE FUTURE OF YOUR INDUSTRY?



WHAT ATTRIBUTES ARE YOU LOOKING FOR IN A NEW HIRE/EMPLOYEE?



HOW WOULD YOU DESCRIBE THE CULTURE OF GUTHRIE?

“PASSIONATE”
“LESS RESTRICTIONS”

“SIMULATED COLLEGE AND PROFESSIONAL ATMOSPHERE”

“CARING”

“JUNIOR COLLEGE”

“NEVER LIMITING OURSELVES OR OUR STUDENTS WE HAVE PROVIDED A SAFE PLACE FOR EVERYONE TO DO MORE, GO BEYOND, TO DISCOVER APPLY AND SUCCEED.”

“LIKE A FAMILY”

“WE TEACH STUDENTS HOW TO BE THINKERS AND PROBLEM SOLVERS WITH A BROAD RANGE OF SKILLS THROUGH OUR SPECIFIC COURSES.”

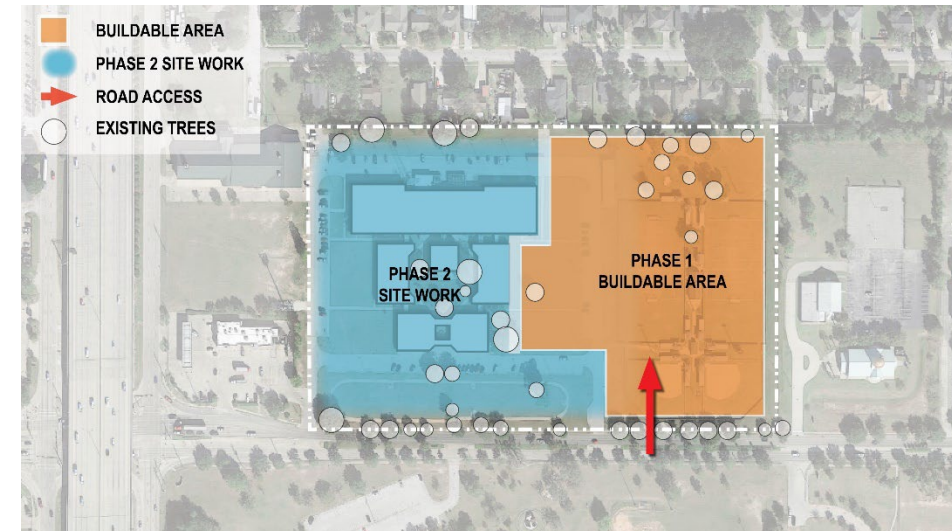
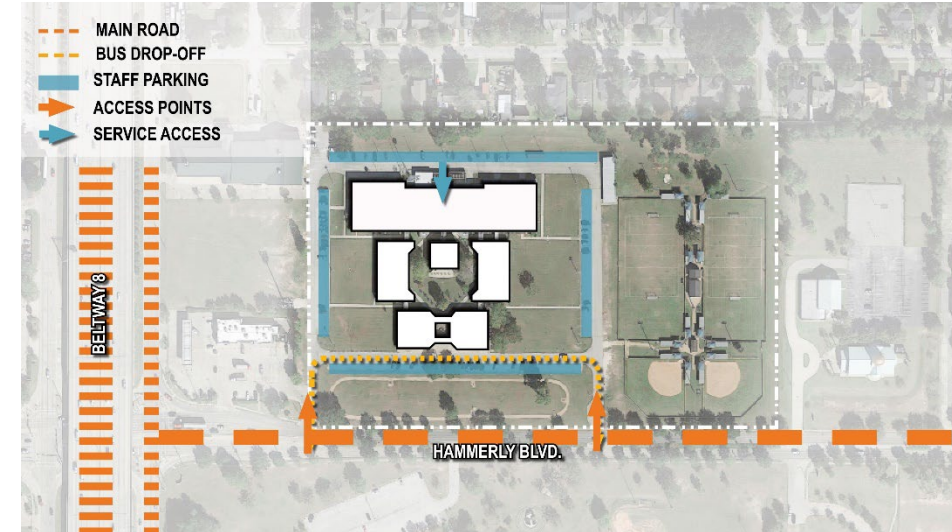
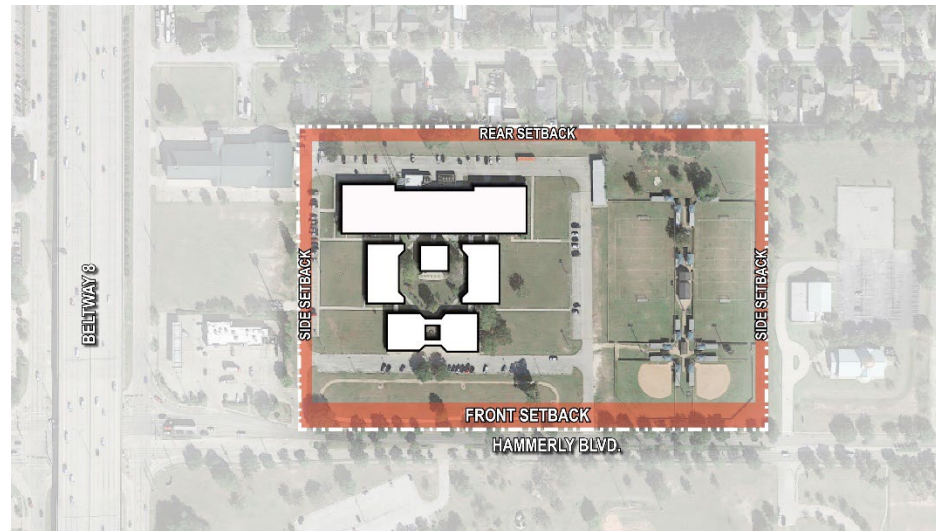
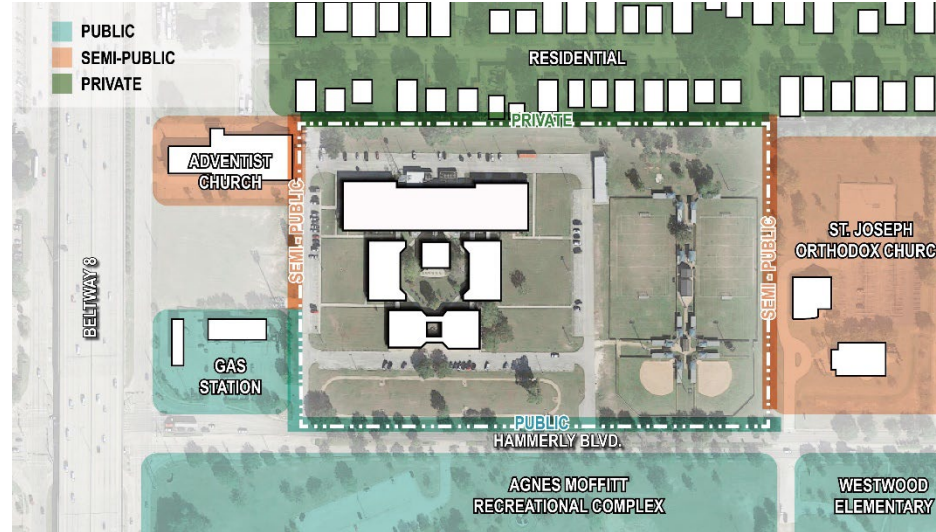
“EXPECTED TO STEP AWAY FROM AND GO BEYOND SOME OF THE LIMITING ASPECTS OF TRADITIONAL EDUCATION.”

“THE CULTURE AT GUTHRIE IS ONE OF PROFESSIONALISM, COOPERATION, INTEGRITY, EXCELLENCE, CAMARADERIE, AND SUPPORT.”

PAT #1 RECAP SITE ANALYSIS

In PAT #1 – We reviewed current site constraints and limitations:

1. Site Adjacencies
2. City Required Setbacks
3. Site Access, Circulation, and Parking Locations
4. Site Access, Circulation, and Parking Locations



1. OVERVIEW & PAT PROCESS

2. PAT #1: **RECAP**

3. PAT #1 RECAP: GUIDING PRINCIPLES

4. PROGRAM REVIEW

5. PAT #2 ENGAGEMENT: **BUILDING ORGANIZATION**

6. NEXT STEPS

PAT #1 RECAP: **GUIDING PRINCIPLES**

4 QUESTIONS ASKED:

1. Describe your goal for the **overall feel** of the new Guthrie Center.
2. As you consider a new Guthrie Center, what are some of the **building attributes** that you think would allow for student success and engagement?
3. Describe what can make the new Guthrie Center **a special and unique experience for students and staff.**
4. How can the new Guthrie Center **inspire generations of students to come?**

QUESTION 1: Describe your goal for the [overall feel](#) of the new Guthrie Center.

what you said...

“

adult and student synergy
flexible inviting modern
engaging inspiring **dynamic**
welcoming collegiate
professional
real-world setting
innovative creative
adaptable collaborative
state of the art
futuristic

QUESTION 2: *As you consider a new Guthrie Center, what are some of the building attributes that you think would allow for student success and engagement?*

what you said...

“

branding natural materials
transparency display spaces
natural light adaptable
central courtyard multi-purpose
collaboration spaces
outdoor spaces
flexible spaces community spaces
enterprise entries meeting rooms
leading technology
open spaces spacious

QUESTION 3: Describe what can make the new Guthrie Center [a special and unique experience for students and staff.](#)

what you said...

“

innovation futuristic
leading technology
small welcoming feel
quality of spaces outdoor space
community spaces
collaboration between programs
spaces for industry
accessibility of programs
iconic unique spaces
real world experiences

“

building as a work of art
a place to see imagination in process

culturally inclusive

signage and branding inviting

engaging innovative

programs on display

high degree of excellence

professionalism building that can adapt

dynamic spaces for industry events

a place with the best teachers

portrait of the future

project display areas

what you said...

QUESTION 1: Describe your goal for the overall feel of the new Guthrie Center.

what you said...



QUESTION 2: As you consider a new Guthrie Center, what are some of the building attributes that you think would allow for student success and engagement?

what you said...



QUESTION 3: Describe what can make the new Guthrie Center a social and unique experience for students and staff.

what you said...



QUESTION 4: How can the new Guthrie Center inspire generations of students to come?

what you said...



PAT input

PAT input

PAT input

PAT input

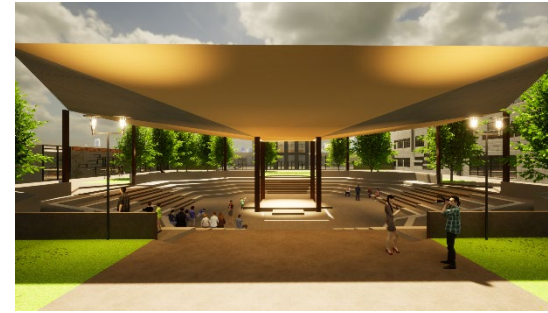
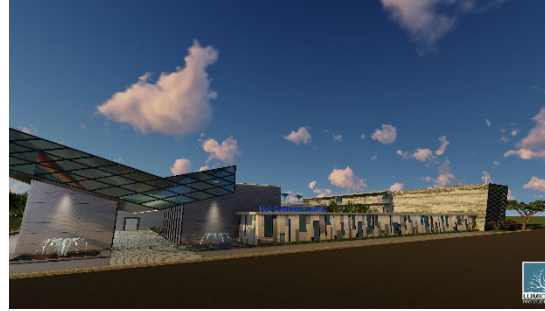
Guthrie Center Design Guiding Principles

Guthrie Center Design Guiding Principles

1. **EMULATE THE WORKPLACE** to provide students with an authentic professional environment and bridge the gap between education and industry.
2. **CREATE AN ENVIRONMENT WHERE COLLABORATION CAN THRIVE** physically and visually. Create synergies generated by collaboration between programs and allow opportunities for integrated teaching and learning experiences.
3. **ENGAGE AND WELCOME THE COMMUNITY, INDUSTRY, AND BUSINESS** through enterprise opportunities, industry partnerships, and community events.
4. **INSPIRE INNOVATION AND DISCOVERY IN A FLEXIBLE AND ADAPTABLE BUILDING** through state-of-the-art learning spaces that are relevant and support current and future careers.
5. **CONNECT STUDENTS TO THE OUTDOORS AND NATURE** with meaningful outdoor social and educational experiences.

GUTHRIE THROUGH THE EYES OF THE STUDENTS:

Below are ideas and concepts from Guthrie architecture students' design of the new center



GUTHRIE THROUGH THE EYES OF THE STUDENTS:

their responses...

Below are common goals/inspiration for the students' design of the new center

“

professional
clarity of circulation
all-weather courtyard
natural light
nature a place that is inspiring
learning on display
amphitheater secure courtyard
visual connectivity environmentally friendly
impossible not to go outside transparency
interdisciplinary collaboration
room for growth
an icon for the district

1. OVERVIEW & PAT PROCESS
2. PAT #1: **RECAP**
3. PAT #1 RECAP: **GUIDING PRINCIPLES**
- 4. PROGRAM REVIEW**
5. PAT #2 ENGAGEMENT: **BUILDING ORGANIZATION**
6. NEXT STEPS

GUTHRIE CENTER PROGRAMS

ARCHITECTURE & CONSTRUCTION

Construction Technician
Electrical Technician
Architectural Design

MANUFACTURING

Welding

ARTS, AUDIO VISUAL TECH & COMMUNICATIONS

Digital Communications (Filmmaking)

HEALTH SCIENCE

Healthcare Practitioner
Patient Care Technician
Dental Assistant
Pharmacy Technician

HOSPITALITY AND TOURISM

Culinary Arts

INFORMATION TECHNOLOGY

Info Tech Support & Services

LAW & PUBLIC SAFETY

Law Enforcement

TRANSPORTATION, DISTRIBUTION & LOGISTICS

Automotive Technician

HUMAN SERVICES

Cosmetology

MILITARY - JROTC

NJROTC

1. OVERVIEW & PAT PROCESS

2. PAT #1: **RECAP**

3. PAT #1 RECAP: **GUIDING PRINCIPLES**

4. **PROGRAM** REVIEW

5. PAT#2 ENGAGEMENT: BUILDING ORGANIZATION

6. NEXT STEPS

PAT #2 ENGAGEMENT

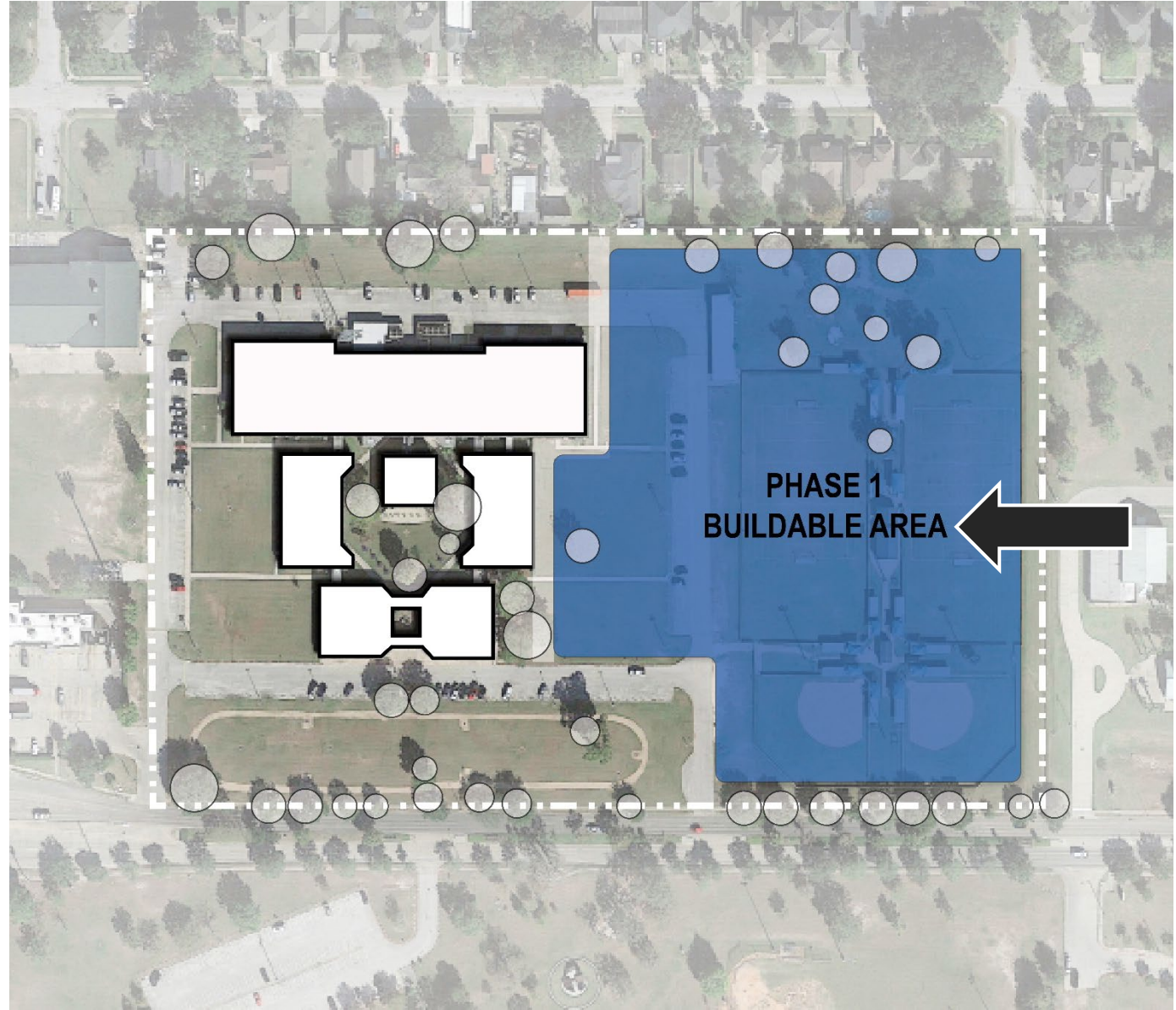
BUILDING ORGANIZATION

In preparation for the PAT #2 Engagement Activity:

We will share with you some parameters for each of the program blocks that you should keep in mind as you complete the activity.

SITE

1. Keep new building within the Buildable Area



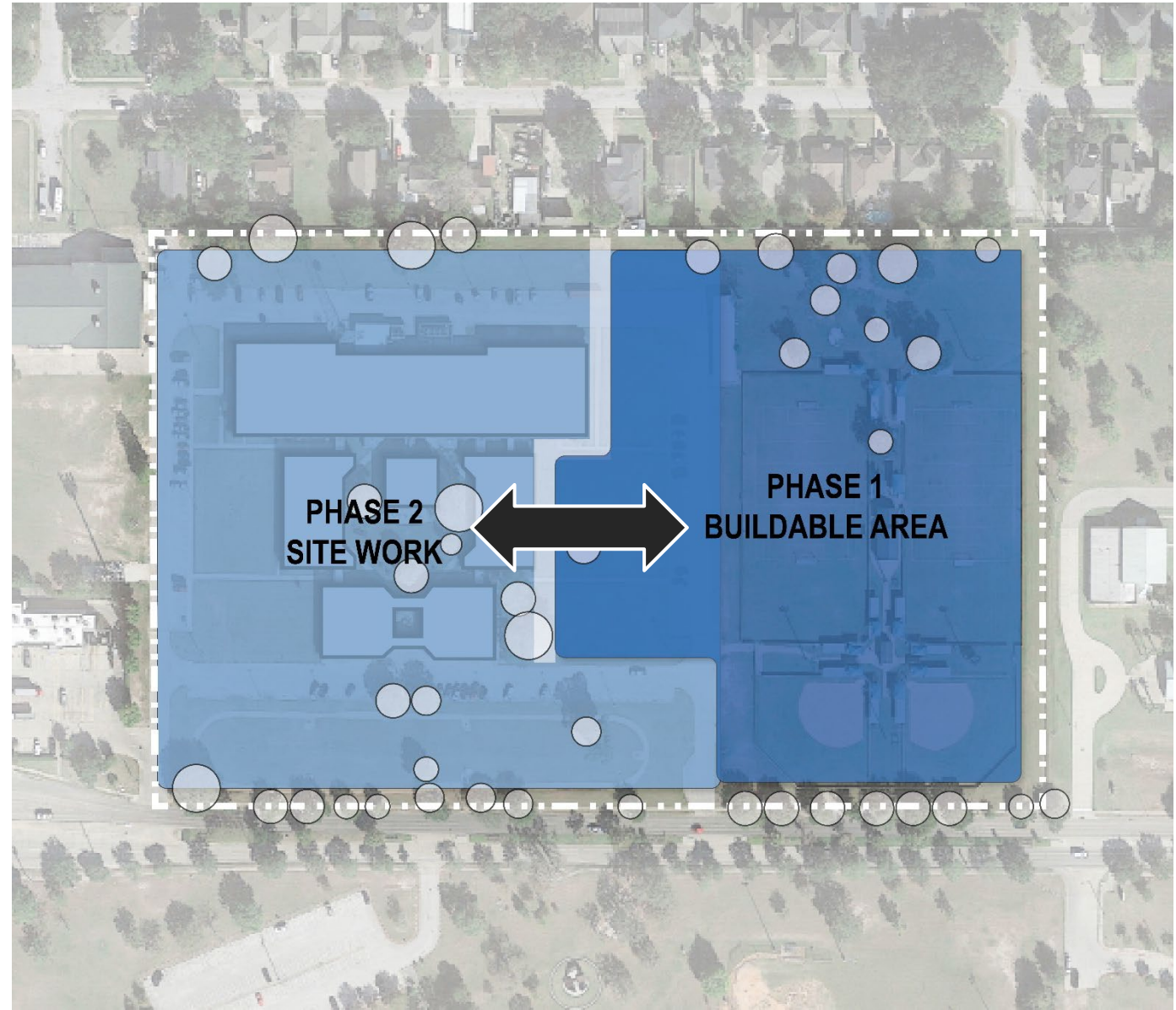
PAT #2 ENGAGEMENT **BUILDING ORGANIZATION**

In preparation for the PAT #2 Engagement Activity:

We will share with you some [parameters](#) for each of the program blocks that you should keep in mind as you complete the activity.

SITE

1. Keep new building within the Buildable Area
2. Phase 2 will be sport fields and additional drives and parking. Think of the relationship of the new Guthrie Center and the phase 2 components.





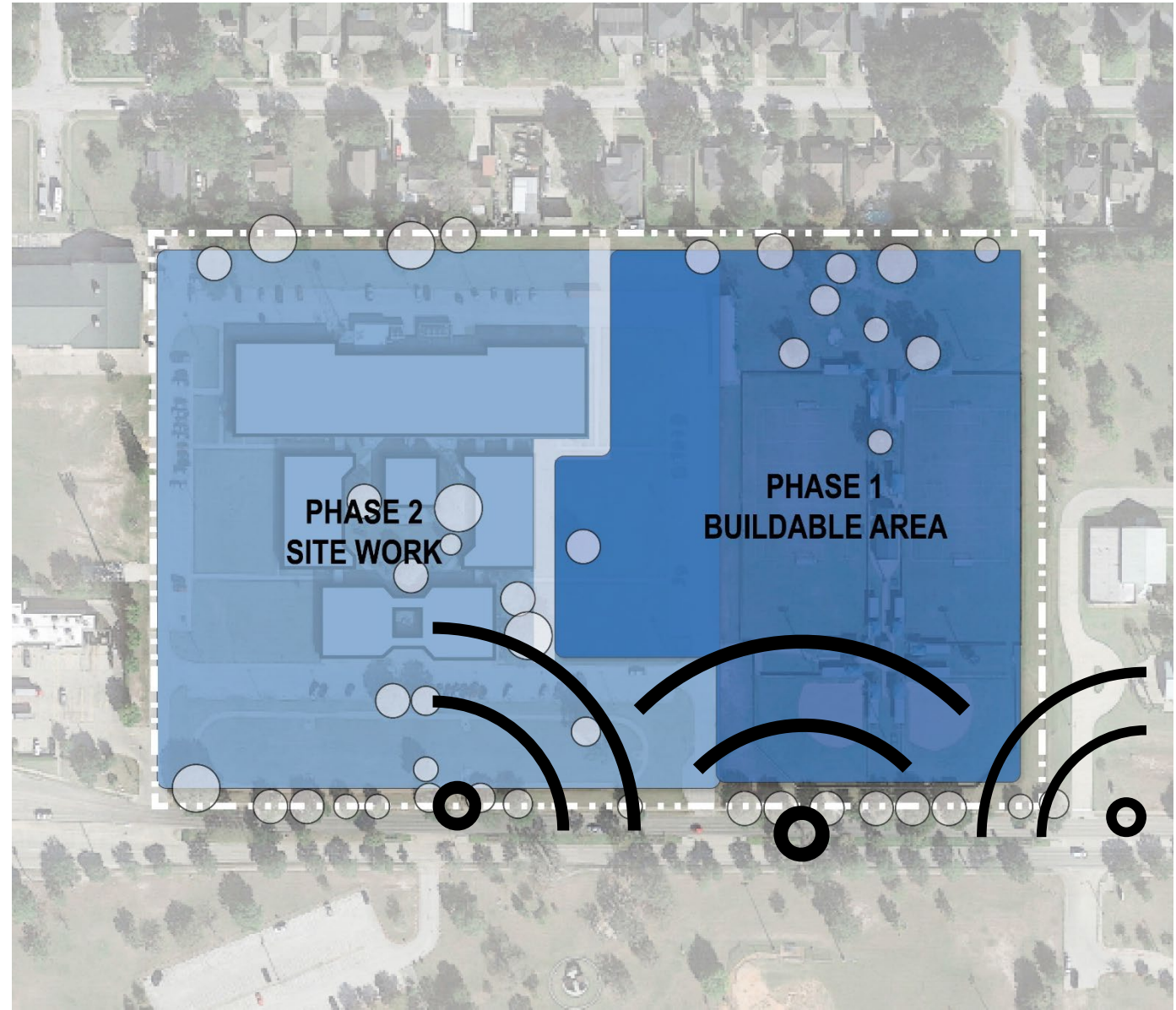
PAT #2 ENGAGEMENT **BUILDING ORGANIZATION**

In preparation for the PAT #2 Engagement Activity:

We will share with you some [parameters](#) for each of the program blocks that you should keep in mind as you complete the activity.

SITE

1. Keep new building within the Buildable Area
2. Phase 2 will be sport fields and additional drives and parking. Think of the relationship of the new Guthrie Center and phase 2 components.
3. What programs make sense to go in the front public side of the site?



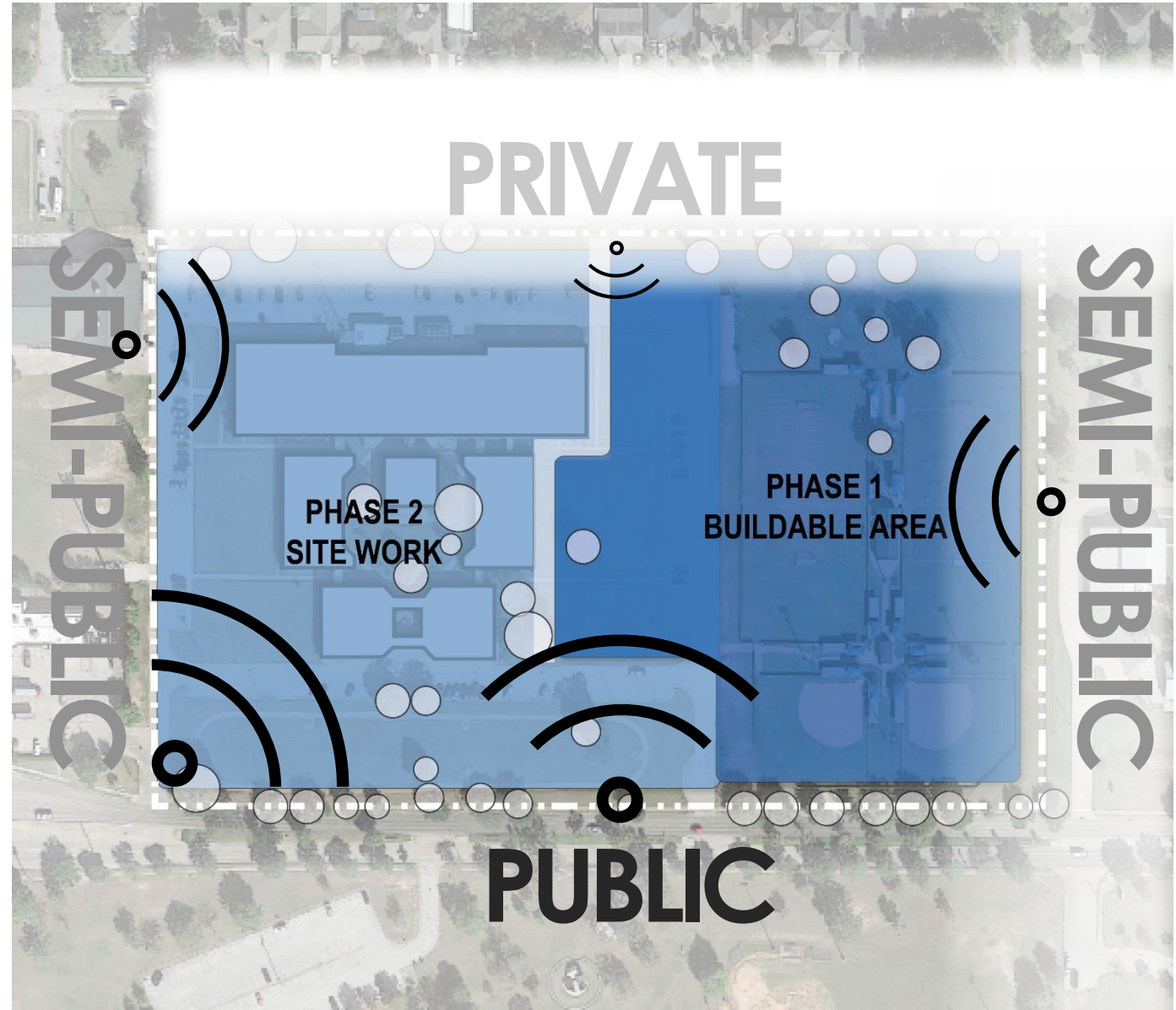
PAT #2 ENGAGEMENT **BUILDING ORGANIZATION**

In preparation for the PAT #2 Engagement Activity:

We will share with you some [parameters](#) for each of the program blocks that you should keep in mind as you complete the activity.

SITE

1. Keep new building within the Buildable Area
2. Phase 2 will be sport fields and additional drives and parking. Think of the relationship of the new Guthrie Center and phase 2 components.
3. What programs make sense to go in the front more public side of the site?
4. **Keep in mind the public, semi-public and more private sides of the site.**



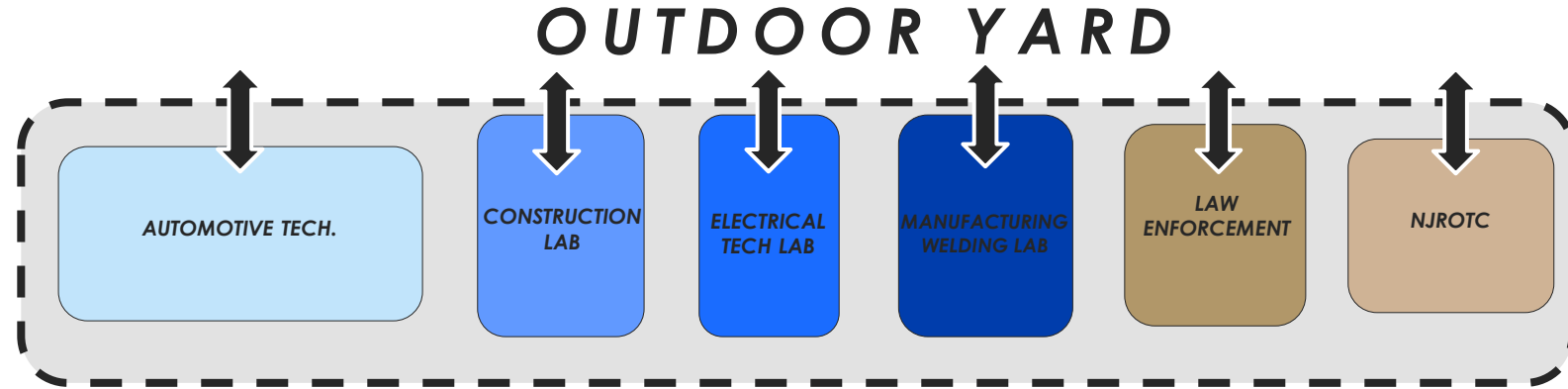
PAT #2 ENGAGEMENT **BUILDING ORGANIZATION**

In preparation for the PAT #2 Engagement Activity:

We will share with you some [parameters](#) for each of the program blocks that you should keep in mind as you complete the activity.

PROGRAM

1. Program blocks that should be on the first floor with access to an outdoor yard.



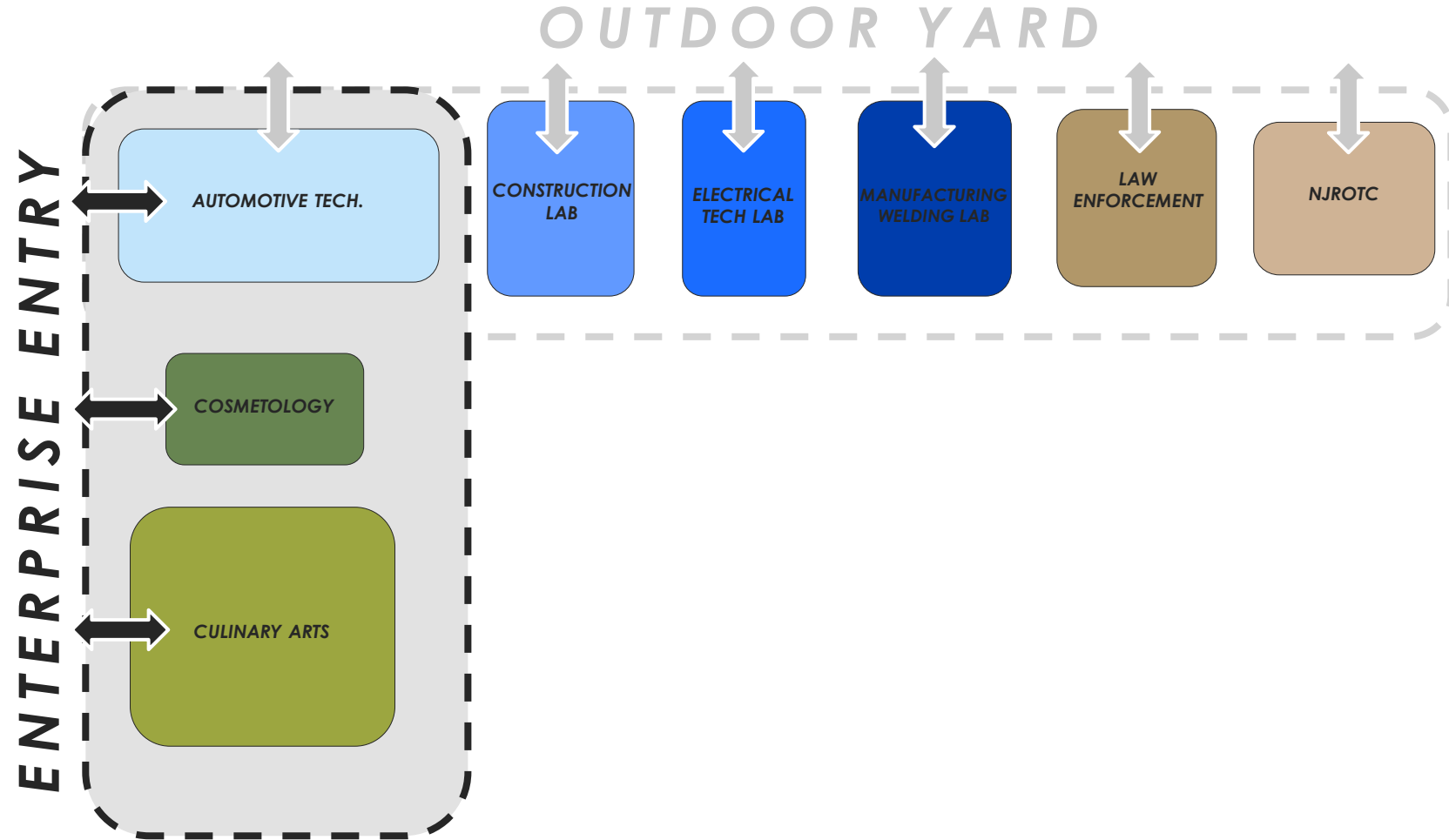
PAT #2 ENGAGEMENT **BUILDING ORGANIZATION**

In preparation for the PAT #2 Engagement Activity:

We will share with you some [parameters](#) for each of the program blocks that you should keep in mind as you complete the activity.

PROGRAM

1. Program blocks that should be on the first floor with access to an outdoor yard.
2. Program blocks with an Enterprise Entry Point



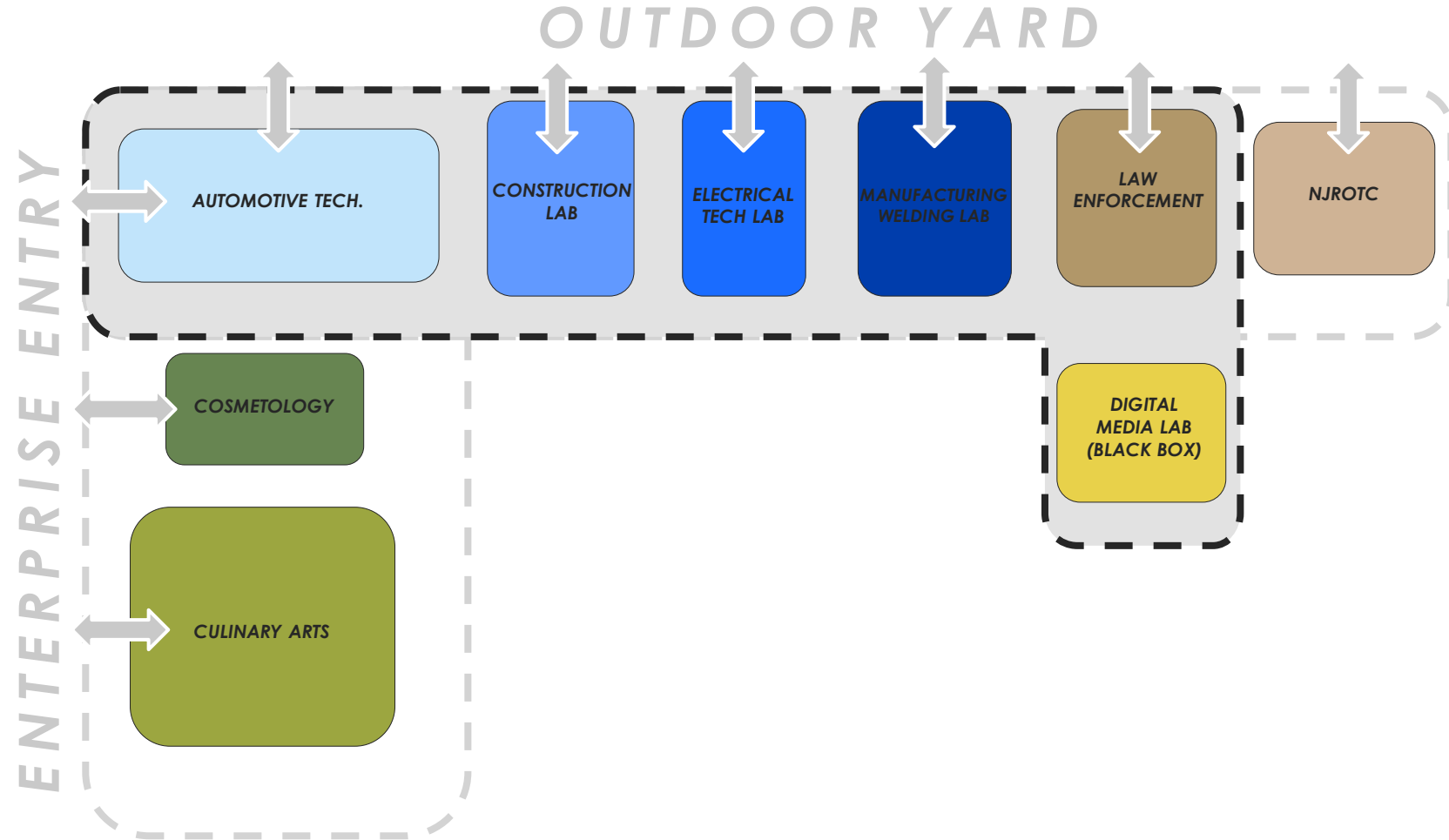
PAT #2 ENGAGEMENT **BUILDING ORGANIZATION**

In preparation for the PAT #2 Engagement Activity:

We will share with you some [parameters](#) for each of the program blocks that you should keep in mind as you complete the activity.

PROGRAM

1. Program blocks that should be on the first floor with access to an outdoor yard.
2. Program blocks with an Enterprise Entry Point
3. Double height spaces





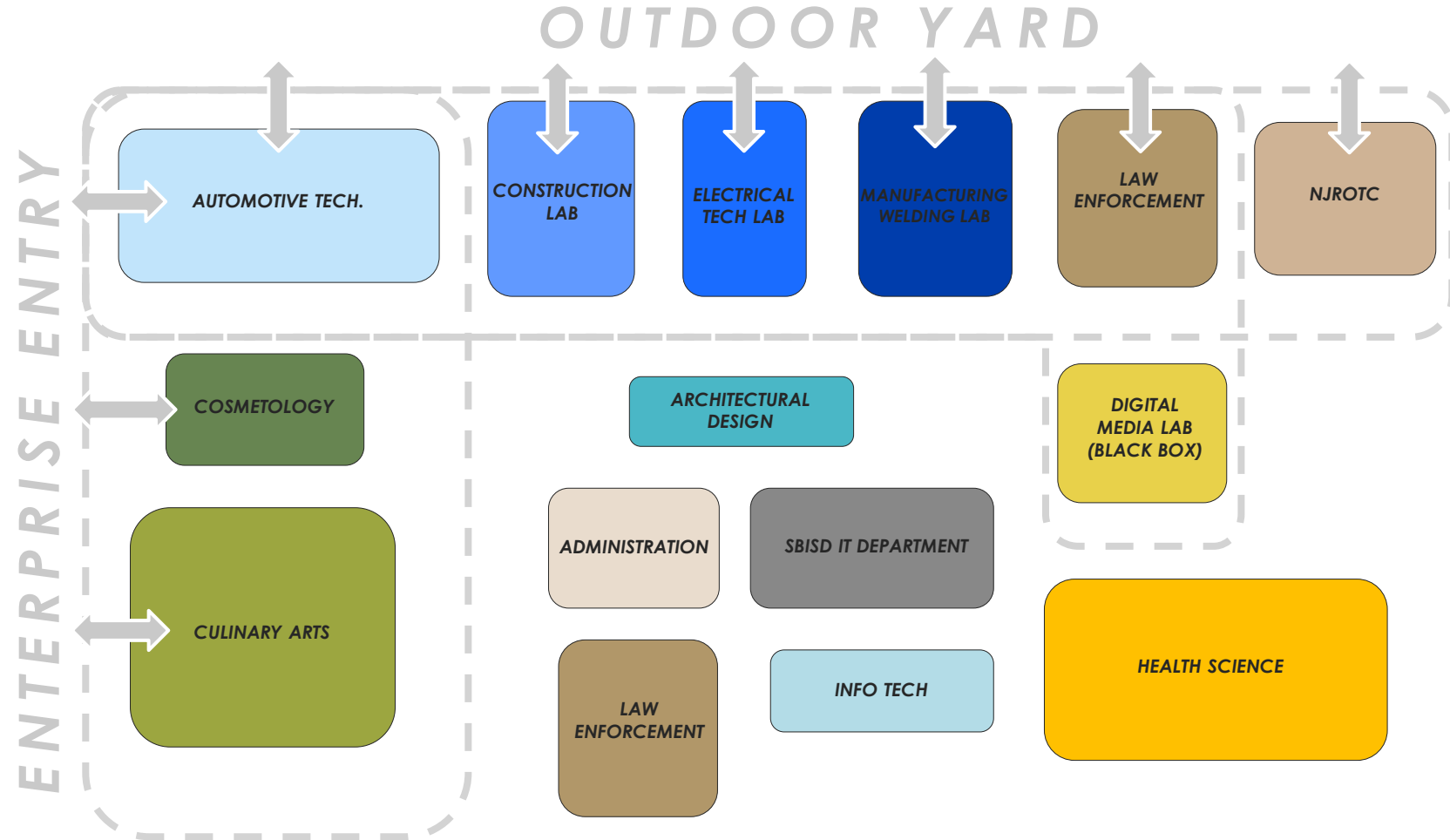
PAT #2 ENGAGEMENT BUILDING ORGANIZATION

In preparation for the PAT #2 Engagement Activity:

We will share with you some [parameters](#) for each of the program blocks that you should keep in mind as you complete the activity.

PROGRAM

1. Program blocks that should be on the first floor with access to an outdoor yard.
2. Program blocks with an Enterprise Entry Point
3. Double height spaces
4. All other program blocks





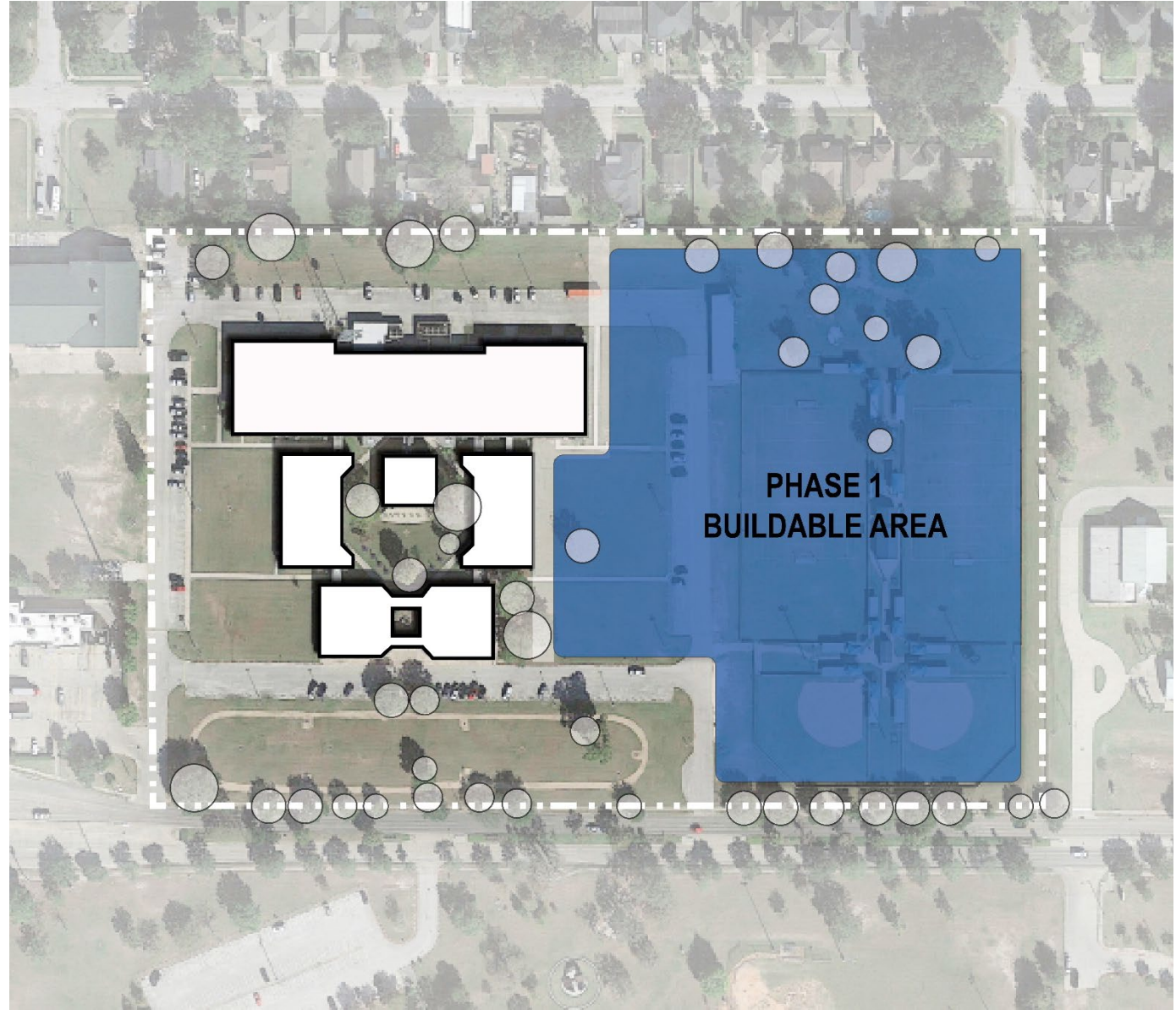
PAT #2 ENGAGEMENT **BUILDING ORGANIZATION**

40 MINUTES FOR ENGAGEMENT ACTIVITY

- 20 minutes of Group/Table work
- 20 minutes of reporting out (5 minutes per table)

EACH TABLE:

- Be sure to take pictures of each option before moving to another option
- Select a speaker to report your thoughts on your layout



1. OVERVIEW & PAT PROCESS

2. PAT #1: **RECAP**

3. PAT #1 RECAP: **GUIDING PRINCIPLES**

4. **PROGRAM** REVIEW

5. PAT #2 ENGAGEMENT: **BUILDING ORGANIZATION**

6. NEXT STEPS



NEXT STEPS

CLOSING REMARKS

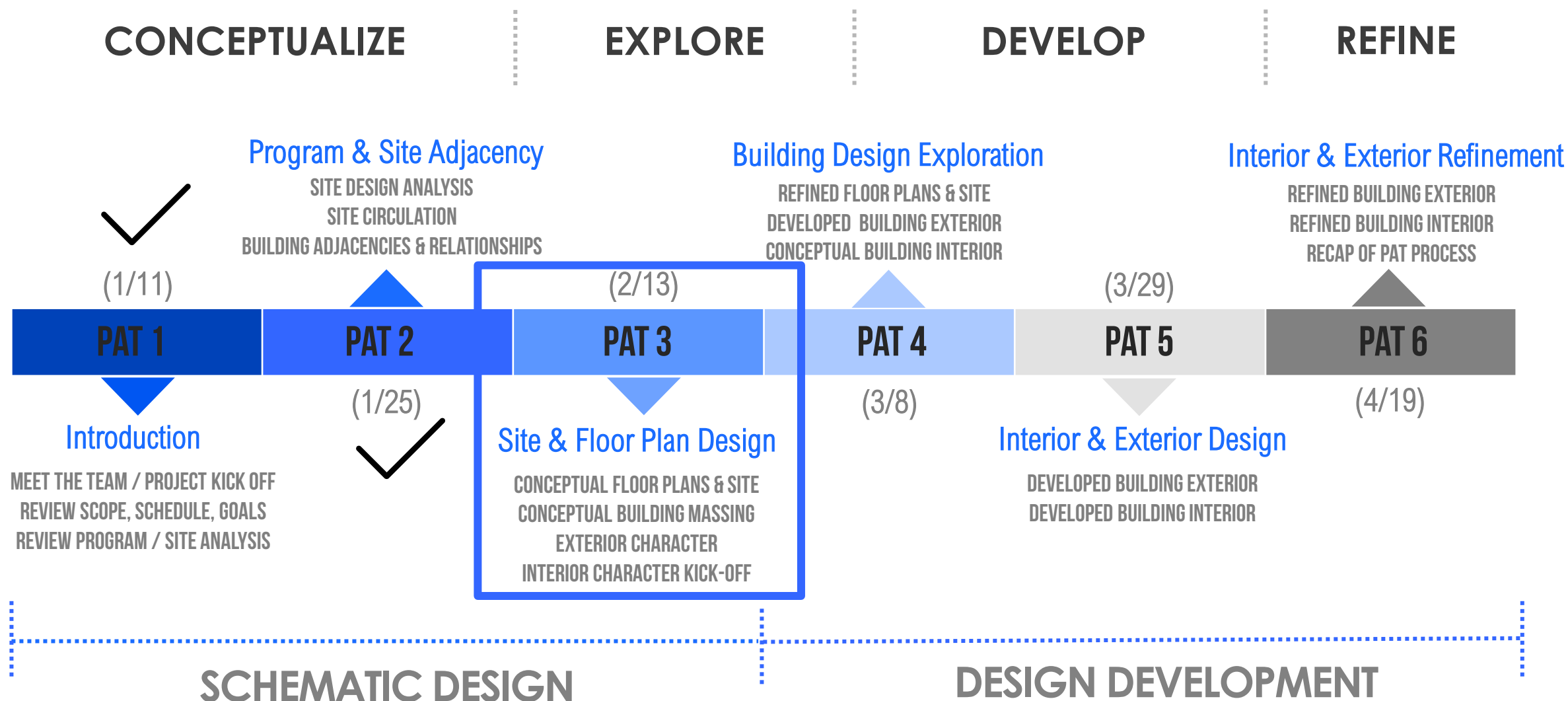
Are we heading in the right direction for the new Guthrie Center?

www.menti.com
CODE: 1959 2257





NEXT STEPS





THANK YOU!

PAT #3 DATE:

February 13, 2023 : 4:00pm – 5:45pm

PRK