



Spring Branch ISD
Landrum Middle School

Project Advisory
Team Meeting #5

April 23, 2019

EVERY CHILD

Agenda: PAT Meeting 5



5 mins: 1. Welcome + Meeting Overview
PAT Charge + Mtg-5 Objective

75 mins: 2. Review Recommended Plan – Draft Presentation

- * Introduction: Project Scope & Schedule
- * PAT Engagement Process Overview
- * **Recommendation - Landrum MS Replacement**
 - Site Plan *(PAT Input)*
 - Floor Plans *(PAT Input)*
 - Teaching & Learning *(PAT Input)*
- * **PAT Design Consensus Survey** *(PAT Vote)*

5 mins: 3. Closing Remarks
Wrap-up / Next Steps

1. Welcome + Meeting Overview

LMS Project Advisory Team (PAT) - Charge

OVERVIEW

A Project Advisory Team (PAT) will be chartered for the planning of a replacement for **Landrum Middle School** under the school's project in the 2017 Bond Program.

CHARGE

The PAT will work collaboratively and cooperatively with the architect and SBISD Project Manager **to conceptualize, develop and refine the project's goals and design.**

The PAT will advise on recommendations regarding the planning and development of the replacement of Landrum Middle School.

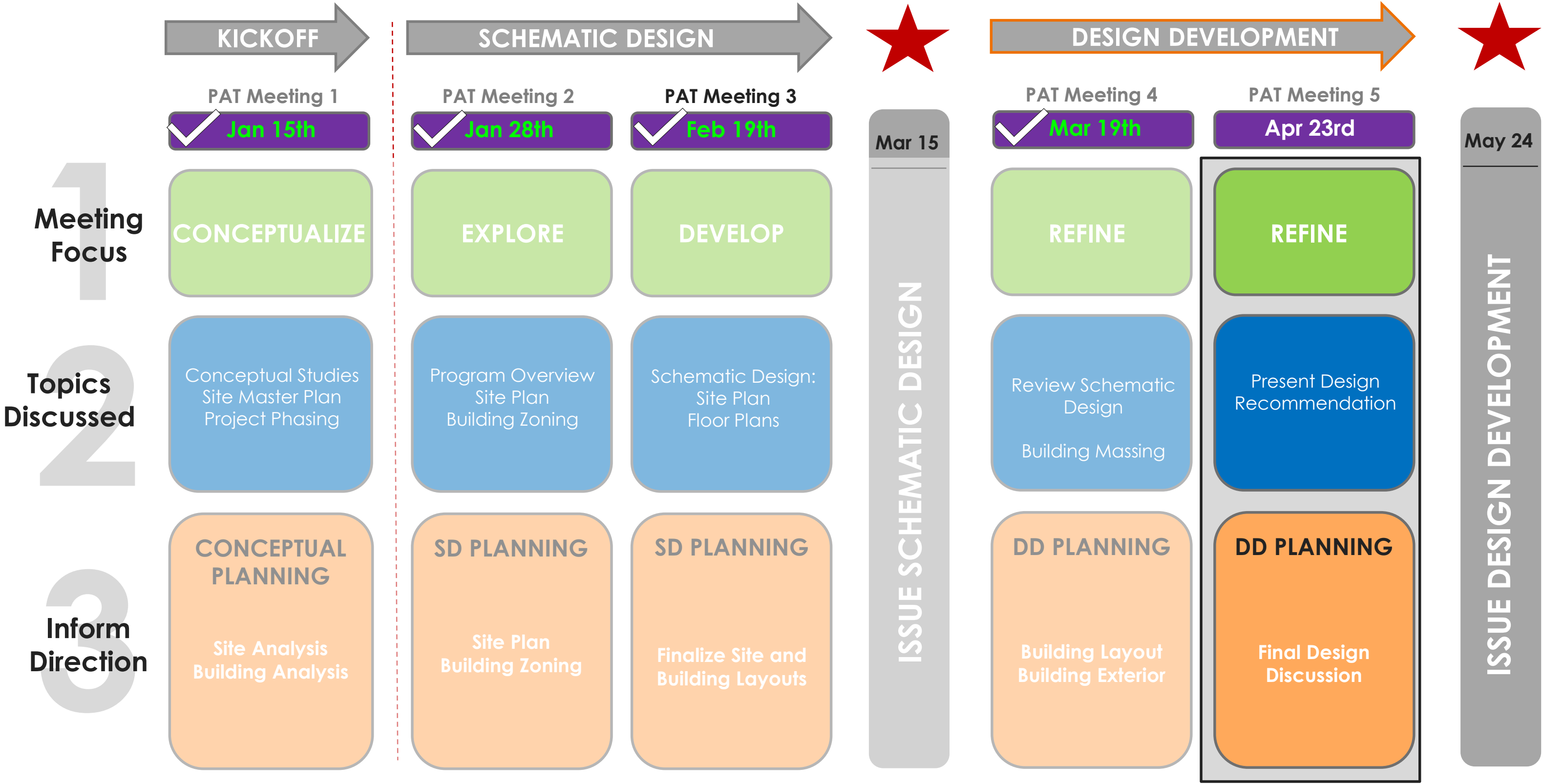
These recommendations will be presented by the project's architects:

- 1) to the **Superintendent of Schools**, and based on approval from the Superintendent,
- 2) to the **Board of Trustees** for their approval.

The Board of Trustees may act upon the recommendations developed with PAT input by approving, amending, altering or not approving all or any part of the recommendations.

1. Welcome + Meeting Overview

Landrum MS | PAT Engagement Process



Agenda: PAT Meeting 5

5 mins: **1. Welcome + Meeting Overview**
PAT Charge + Mtg-5 Objective

75 mins: **2. Review Recommended Plan – Draft Presentation**

- * Introduction: Project Scope & Schedule
- * PAT Engagement Process Overview
- * **Recommendation - Landrum MS Replacement**
 - Site Plan (PAT Input)
 - Floor Plans (PAT Input)
 - Teaching & Learning (PAT Input)
- * **PAT Design Consensus Survey** (PAT Vote)

5 mins: **3. Closing Remarks**
Wrap-up / Next Steps



Landrum Middle School
Spring Branch ISD



**Landrum MS Replacement
SD / DD Recommendation**
SBISD Administration: May 2, 2019

Table of Contents



01 Introduction - Project Scope + Schedule

02 PAT Engagement - Process Overview

03 Recommendation - Landrum MS Replacement



Project Scope

- **Replacement of Landrum Middle School**
1,100 students serving Landrum MS + KIPP
- **On-Site Transition**
LMS students remain on-campus during new construction
- **New 3-story building, Estimated 234,000 SF**
Based on SBISD Middle School Educational Specifications
- **Estimated 2-year construction sequence**
Phase 1 – Build new LMS on campus, North of existing Building
Phase 2 – Campus moves into new building + Demolition of Existing + Complete remaining site work (parking, fields, etc)



Project Schedule



➤ **Schematic Design Phase** January - March 2019

- *PAT Meeting #1: January 15, 2019*
- *PAT Meeting #2: January 28, 2019*
- *PAT Meeting #3: February 19, 2019*



➤ **Design Development Phase** March - May 2019

- *PAT Meeting #4: March 19, 2019*
- *PAT Meeting #5: April 23, 2019*



PRESENT TO SBISD ADMIN (5/2) + SBISD BOARD (5/6)

➤ **Construction Documents** May – August 2019

➤ **Procurement & Permitting** Sept- Nov 2019

- Board GMP Approval: November 2019

➤ **Construction Administration** Dec 2019-Fall 2021

- **Phase I Construction:** Dec 2019 - May 2021
- **New Building Move In:** June 2021
- **Phase II Construction:** June – Fall 2021



Conceptual Study Recap: Landrum MS Site + Adjacent Properties

1. Detention
2. Tennis Courts
3. Track & Field
4. Lion Lane School
5. Demo 400-Wing Demo Gym
6. Buildable Area for 3-Story Footprint
7. New Front Door
8. New Staff Parking
9. Demo Exist Bldg.
10. Preserve Trees
11. New Drives
12. New Parking
13. Track & Field
14. Tennis Sport Court
15. Practice Field

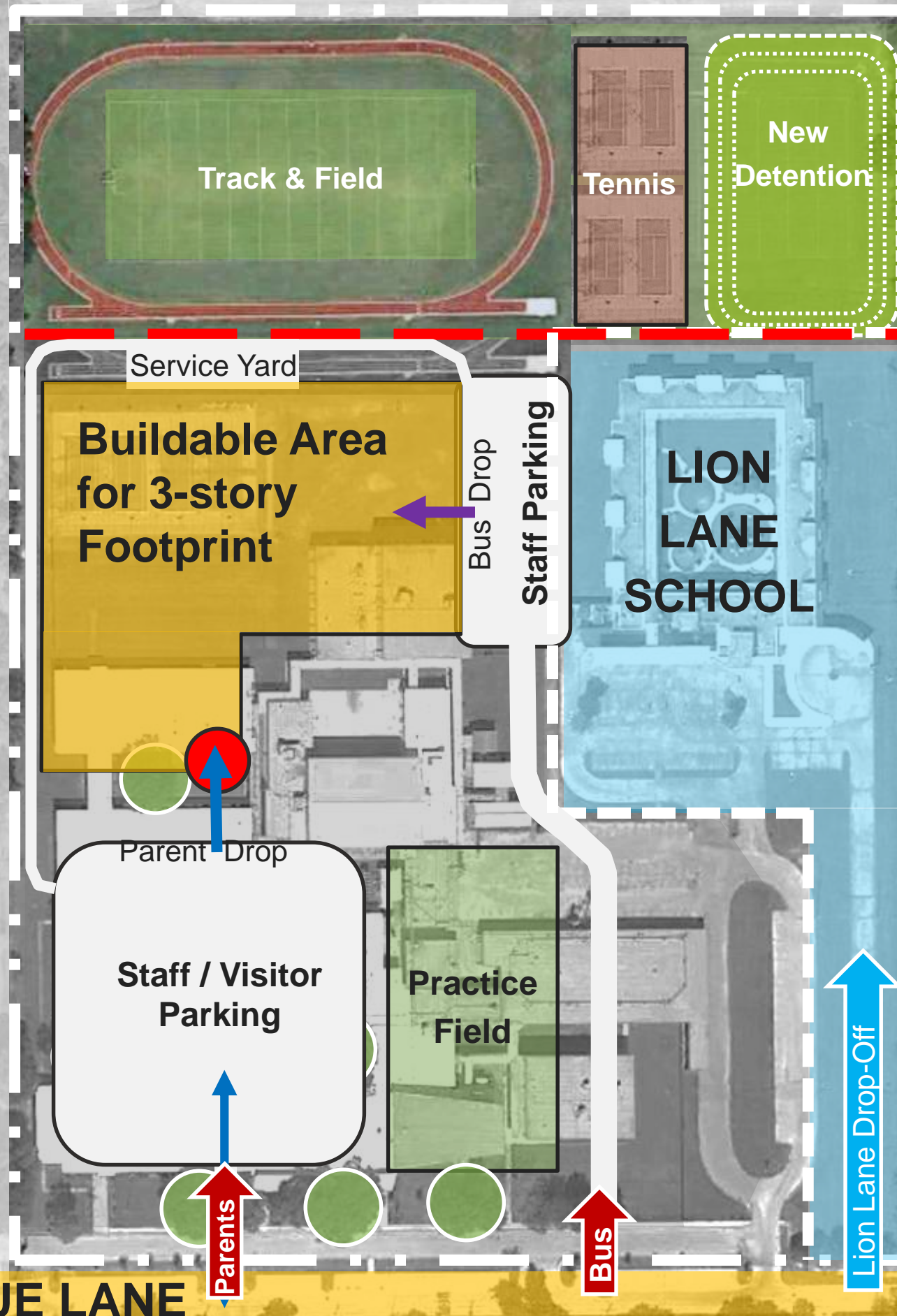


Table of Contents

01 Introduction - Project Scope + Schedule



02 PAT Engagement - Process Overview

03 Recommendation - Landrum MS Replacement

Project Advisory Team (PAT)

20 Participants



Over 80%
Participation Rate

Principal
Assistant Principal
CIT
CIT
CIT
CIT
CIT
CIT
CIT
CIT
PTA President
Parent by Lottery
Parent by Lottery
Staff by Lottery
Staff by Lottery
Student by Lottery
Student by Lottery
HOA Representative
HOA Representative
Business Representative

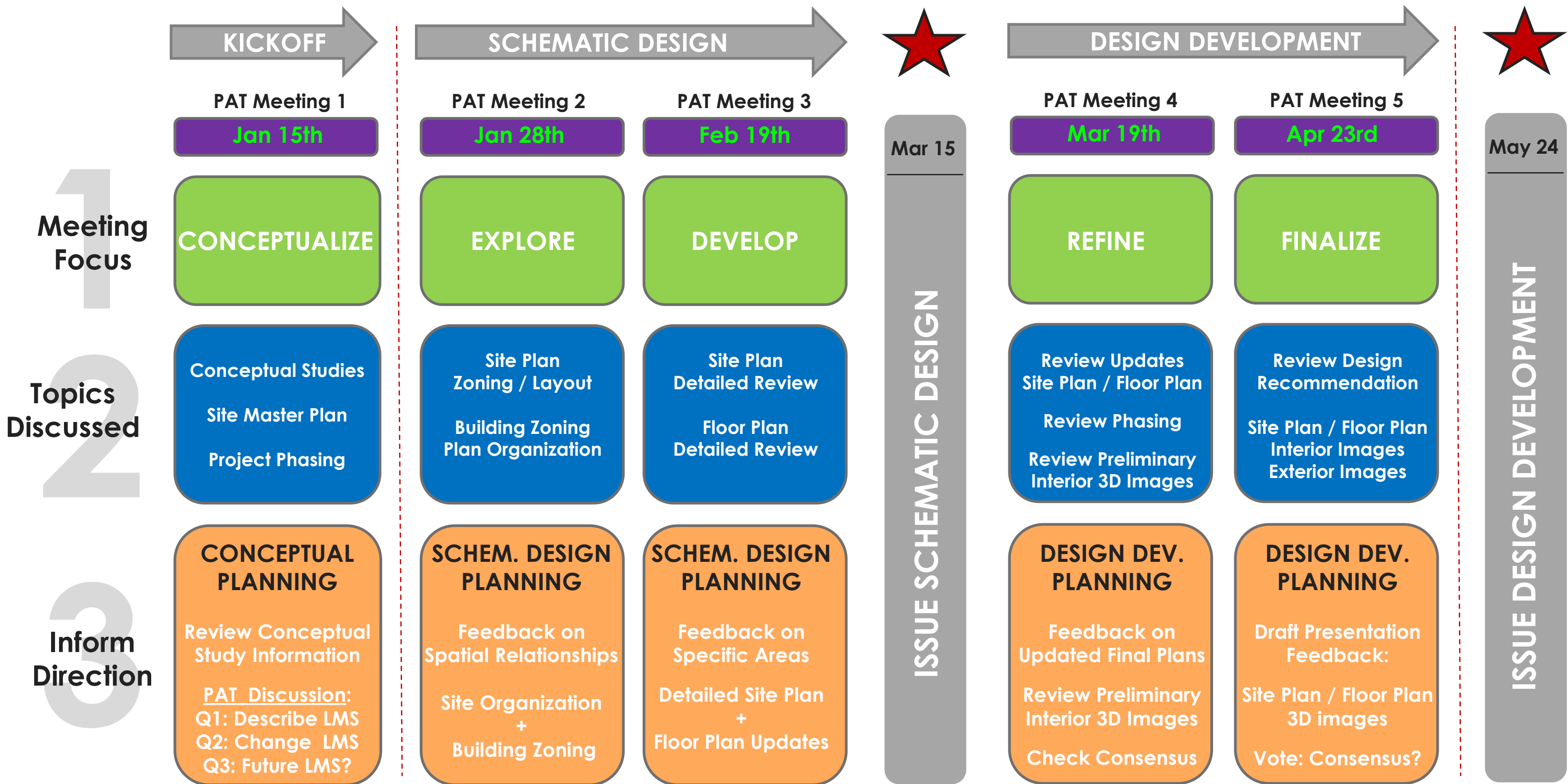
PAT Committee Composition

11 = Landrum MS
Staff + CIT + PTA President

06 = Lottery
Parent + Staff + Students

03 = Community
HOA + Business

PAT Engagement: Schedule + Meeting Overview

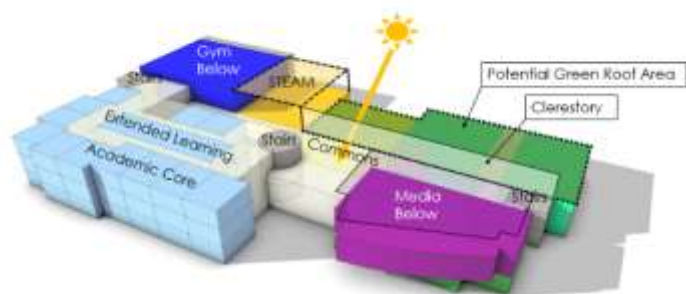
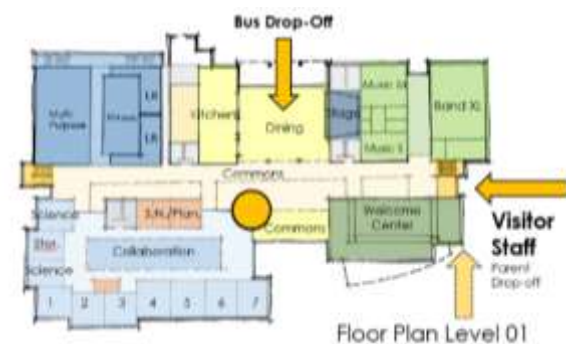


PAT Engagement: Process Overview

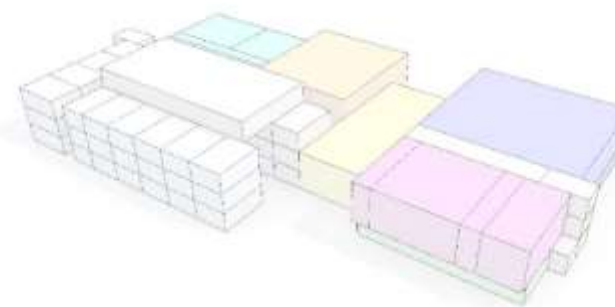
CONCEPTUALIZE



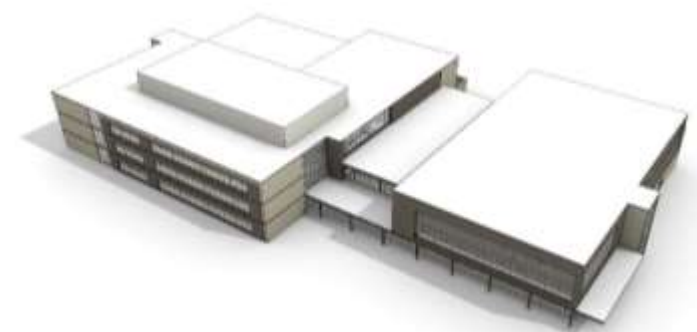
EXPLORE



DEVELOP



REFINE



Conceptual
Planning

(Sept – Dec 2018)



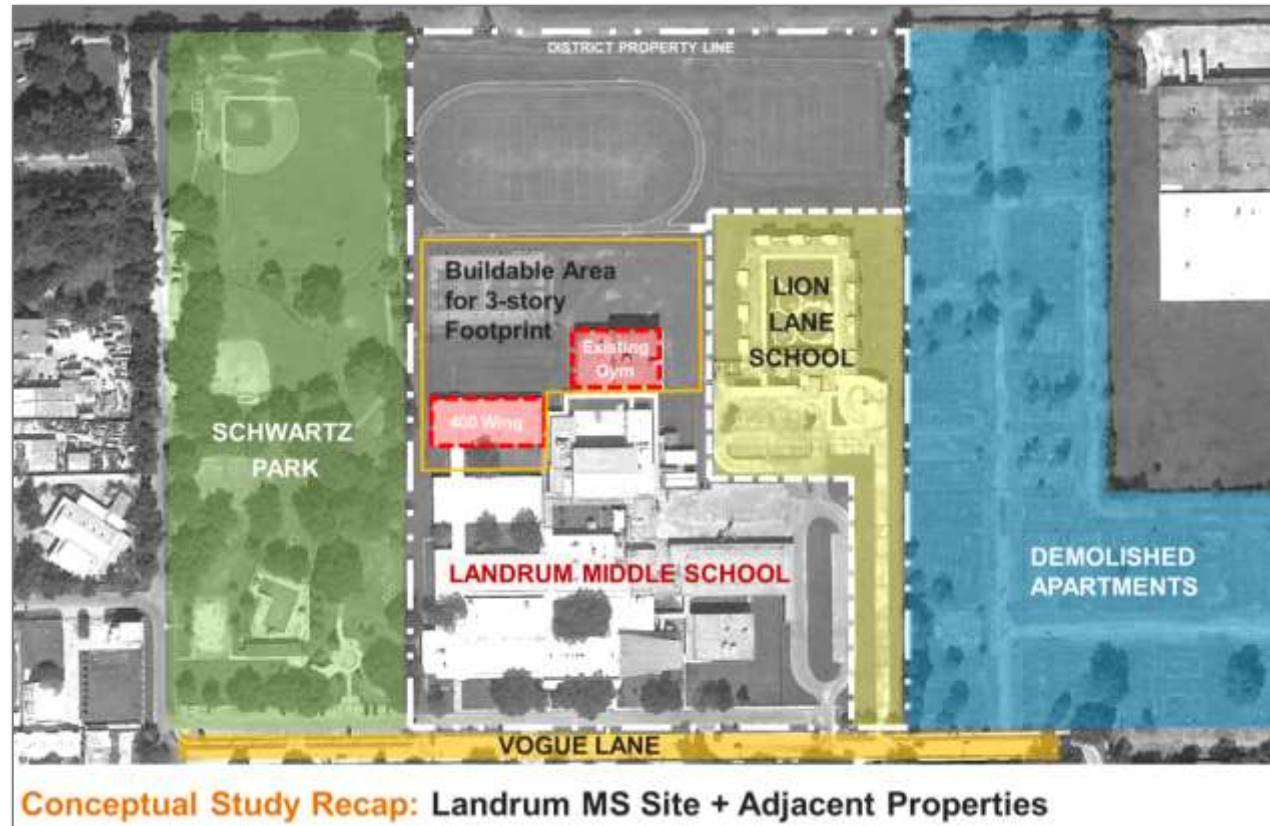
PAT Meetings

(January – March 2019)



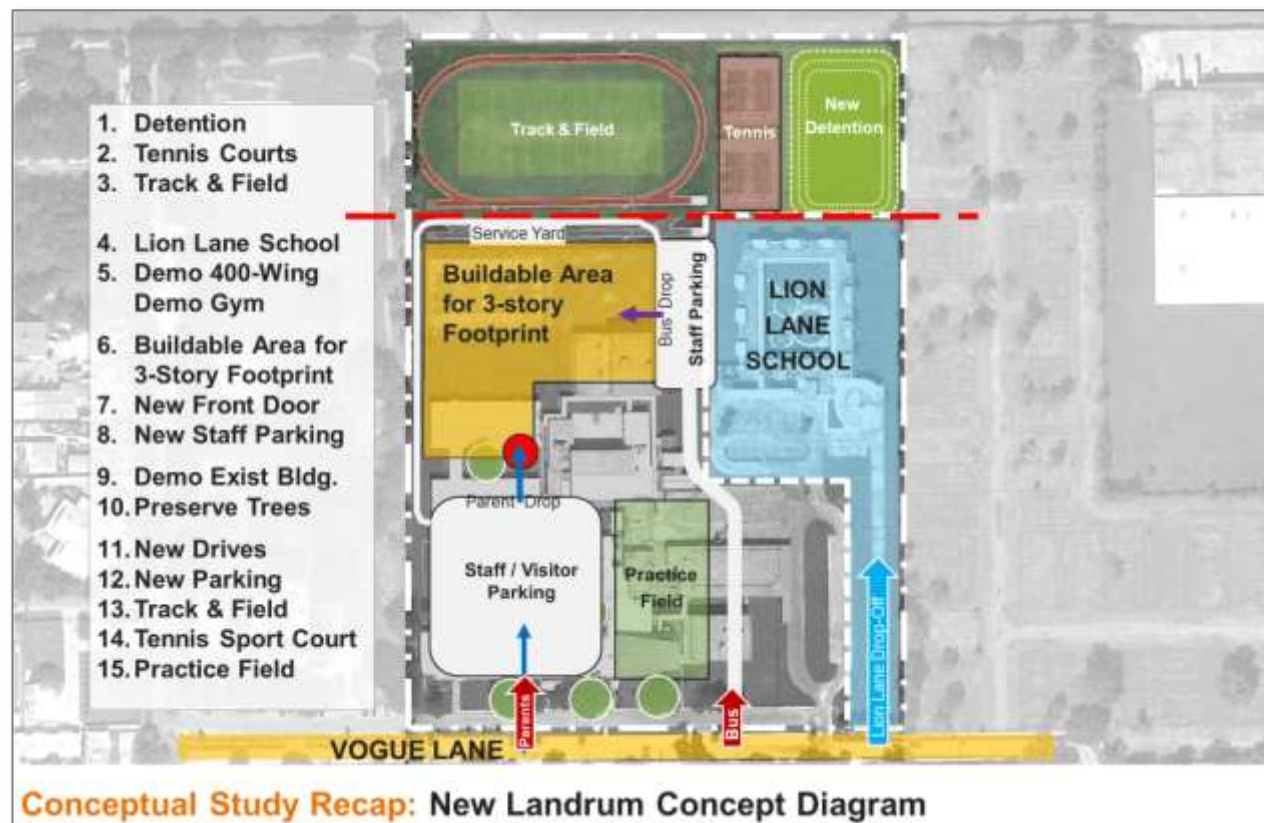
PAT Consensus
(April 2019)

CONCEPTUAL PLANNING

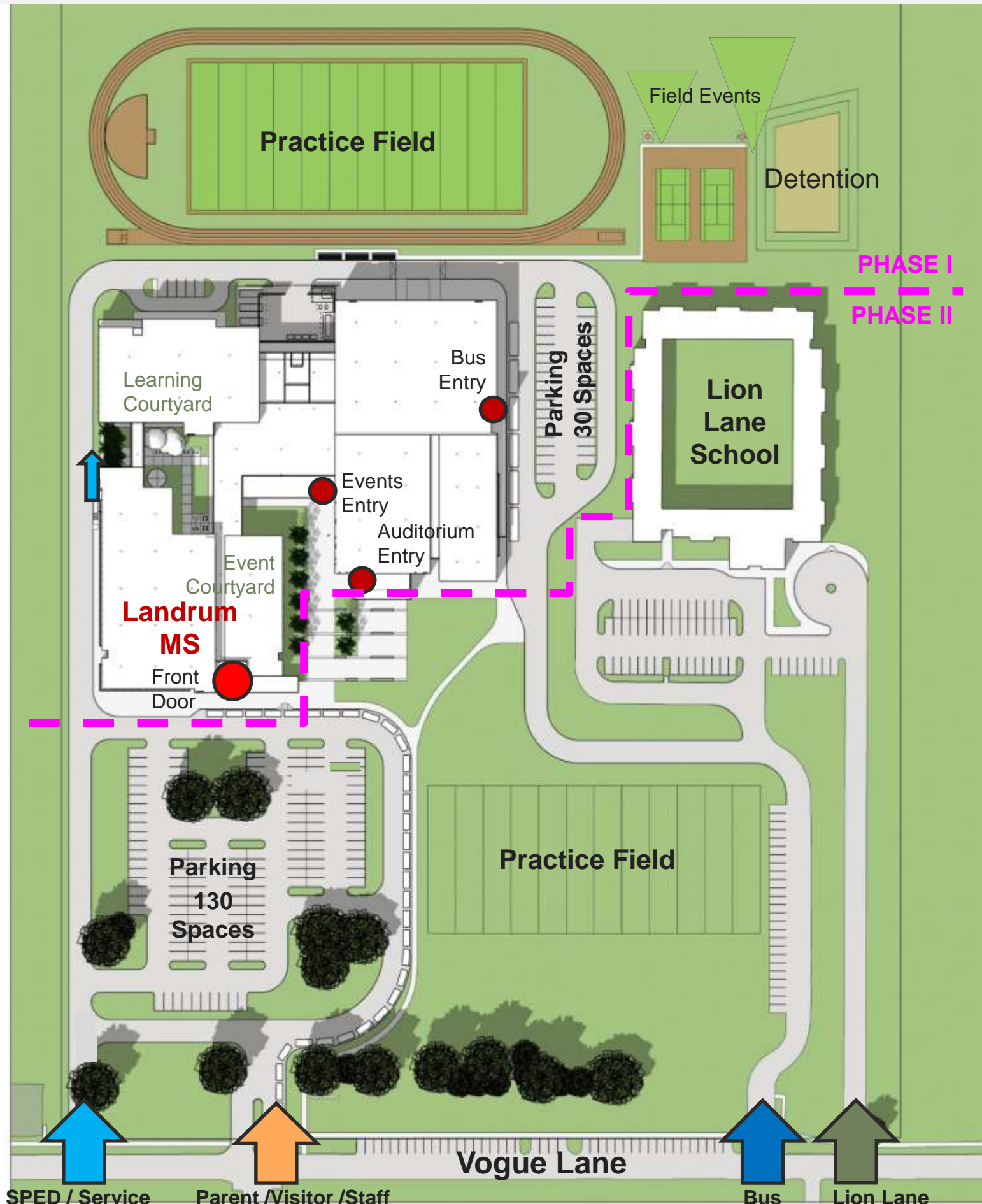


Conceptual Plan Development

- **Fall 2018 Conceptual Planning Meetings** prior to convening LMS Project Advisory Team
- **Goal = Review design options** to keep LMS students on-site during construction
- **Determined On-Site Transition was achievable** with a 3-story design adjacent to existing LMS
- **Conceptual Plan = “Starting Point” for PAT**



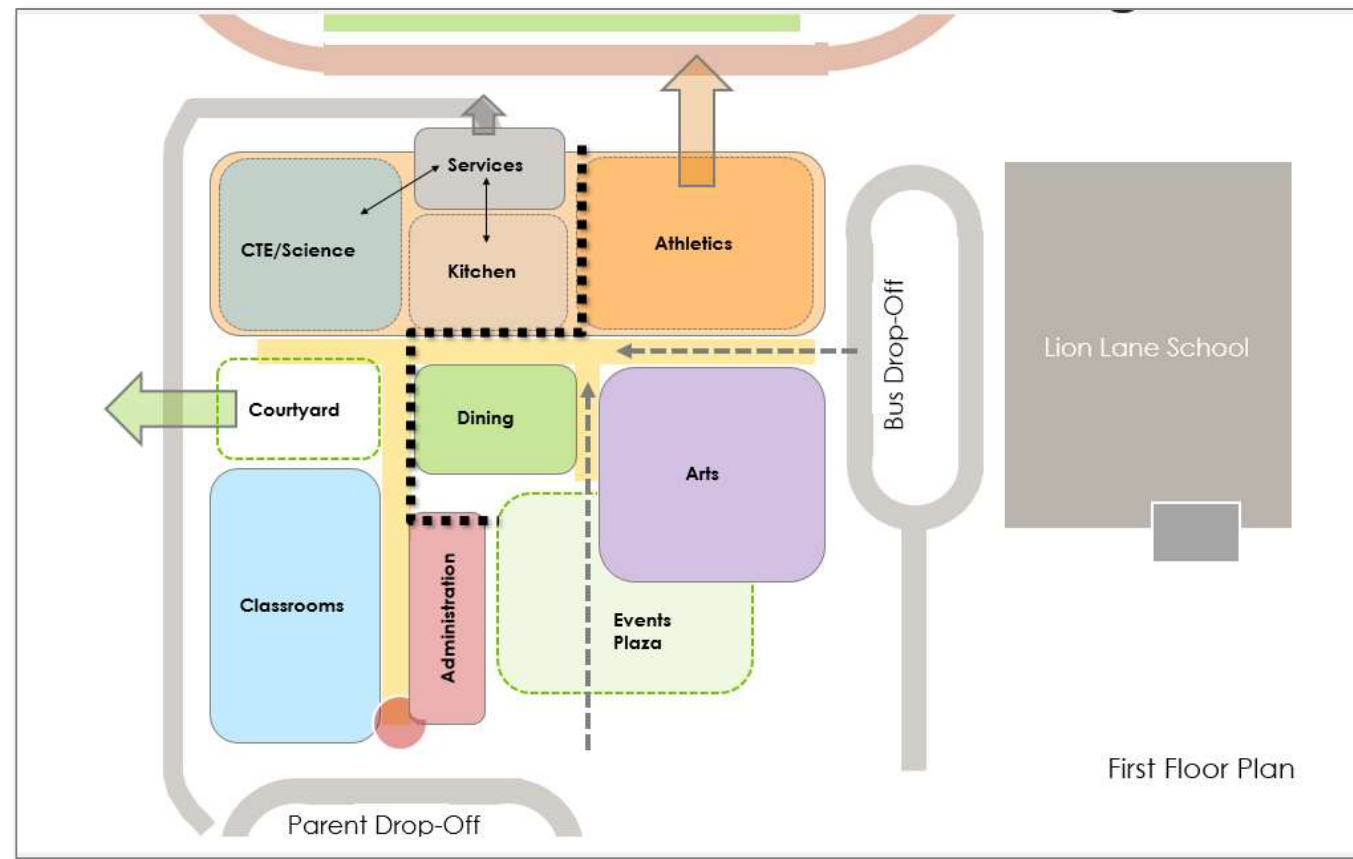
SITE PLANNING



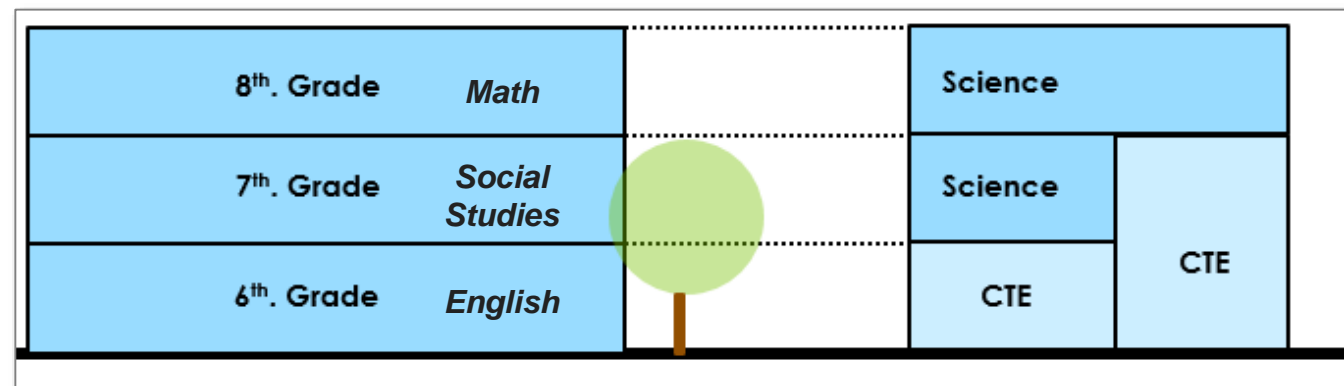
Site Plan Development

- **Building Placement**
On-Site Transition
Build Adjacent → Occupy New → Complete Site
- **Traffic Flow**
Parent Drop-off / Visitor
SPED Drop-off
Bus Drop-off
Staff Parking
Service Drive / Fire Lane
Lion Lane PK
- **Sense of Arrival**
Main Entry
Events Entry
Auditorium Entry
Bus Drop-off Entry
- **Outdoor Connections / Courtyards**
Events Courtyard
Learning Courtyard
- **Construction Phasing**
Phase I – Partial Demo + New Construction
Phase II – Demo Existing + Complete Site

BUILDING ORGANIZATION



Concept Plan
(Bldg. Organization)



3-story Concept Section
(Department or Grade Level)

Building Layout / Plan Development

○ **Spatial Organization / Adjacencies**

Administration
Learning Spaces + Science + CTE
Media Center
Dining Commons
Visual + Performing Arts
PE/Athletics + Gyms

○ **Vertical Organization / Zoning**

Grade Level <or> Departmental Level

○ **Multi-use Spaces / Flexibility**

○ **CTE Program**

Plan for Future Flexibility

○ **Courtyards**

Social + Learning

○ **Security Zones / After Hours Uses**

PE/Athletics (FL1) + Gyms (FL2)

Auditorium, Performing + Fine Arts

Dining Commons

TEACHING AND LEARNING

Learning Beyond the Classroom

- Facilitate Variety of Teaching Methods
- Support Personalized Learning
- Extended Classroom / Flex Spaces
- Easy to Adapt for Future (LMS / KIPP)
- Learning Environment Choices (Individual/ Group)
- Technology Rich / Interactive Environment
- Flexible / Mobile Furniture
- Acoustic Separation between Uses

Direct Instruction



Outdoor Learning



Collaboration / Flex



SCHOOL EXPRESSION

Existing School Expression

- School Motto / Lion Pride:
“**L**ions **I**nspire **O**thers to **N**ever **S**ettle”
- Connections - Indoor / Outdoor
- Art - Murals + Mosaics
- Lifelong Learning Legacy - H.M. Landrum

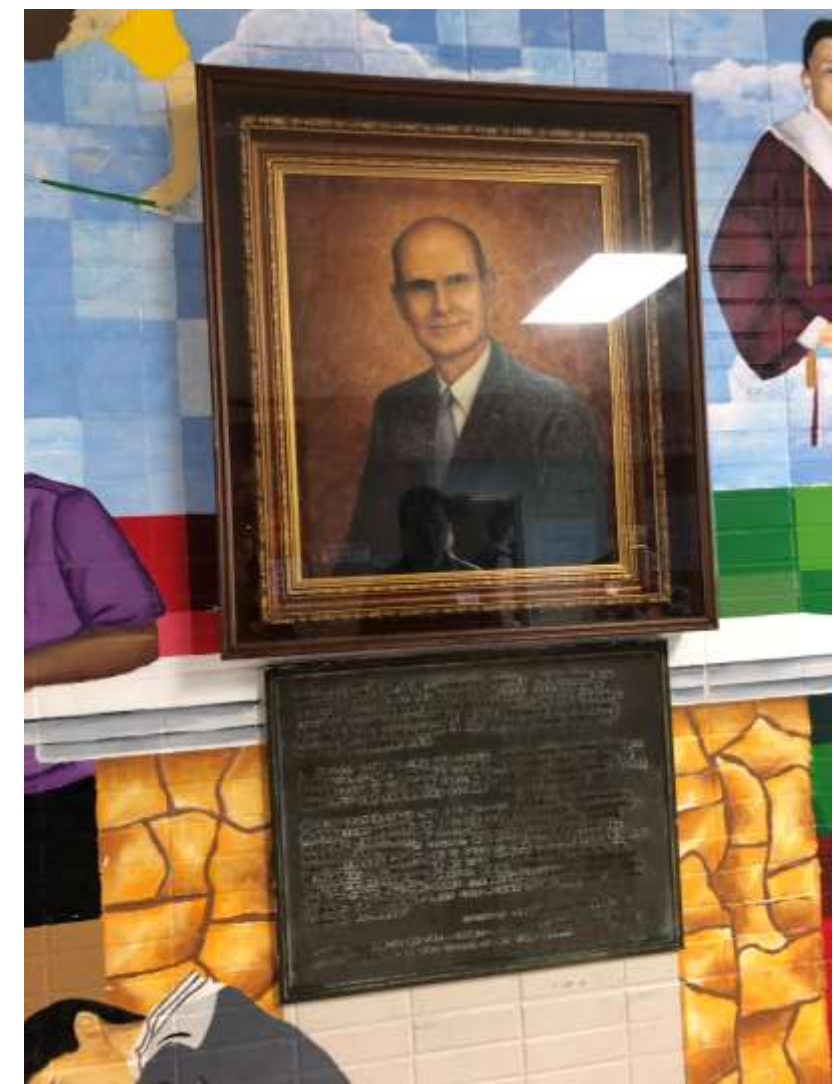
Lion Pride



Outdoor Learning



H.M. Landrum + 1957 LMS



Future School Expression

- School Identity + Branding = **PRIDE**
- Sense of Place = **Desired Destination**
- Flexible/Adaptable = **Future Changes**
- Architectural Expression = **Modern Design, Courtyards, Preserve Trees, Exterior Views**

Table of Contents

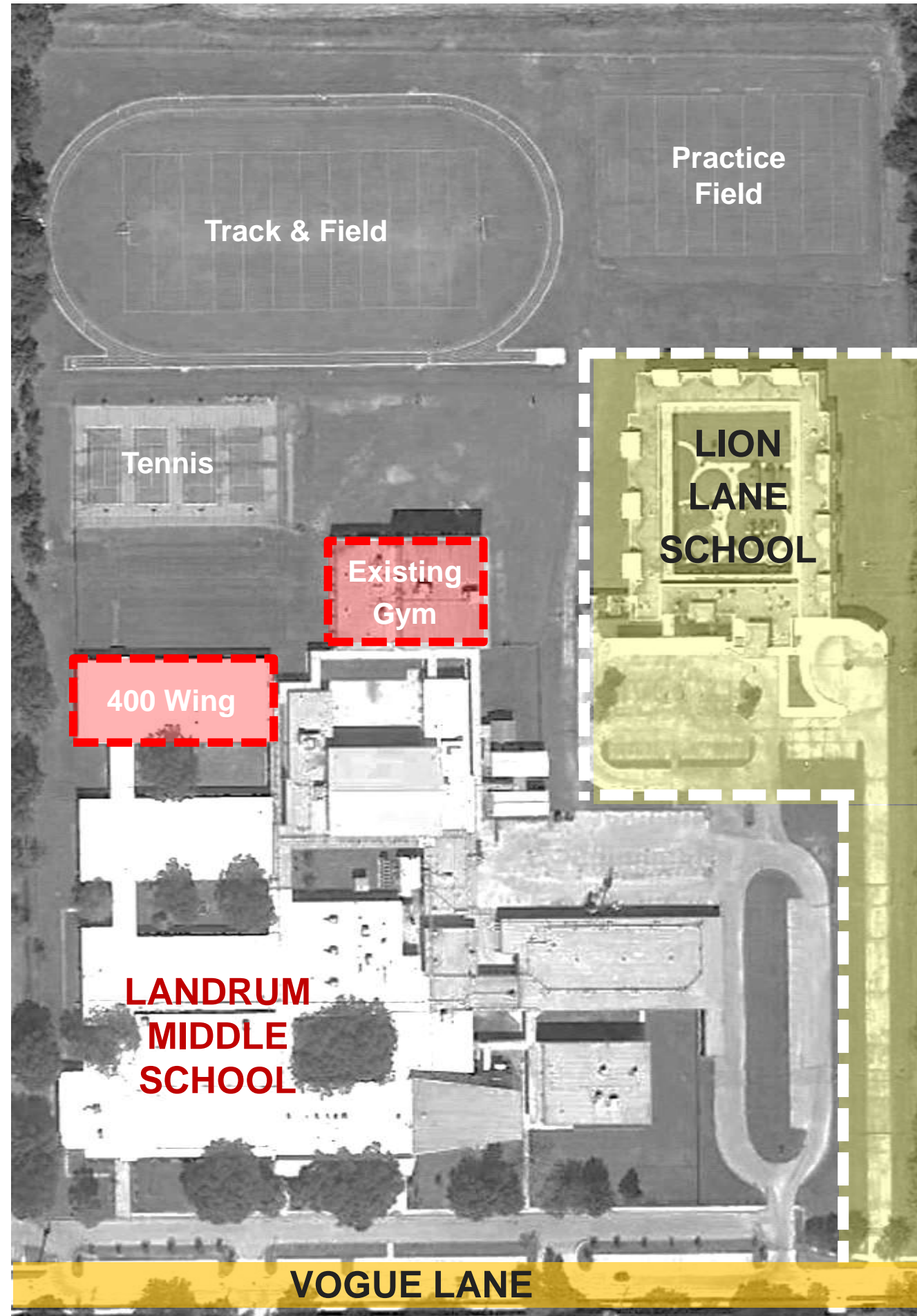
01 Introduction - Project Scope + Schedule

02 PAT Engagement - Process Overview

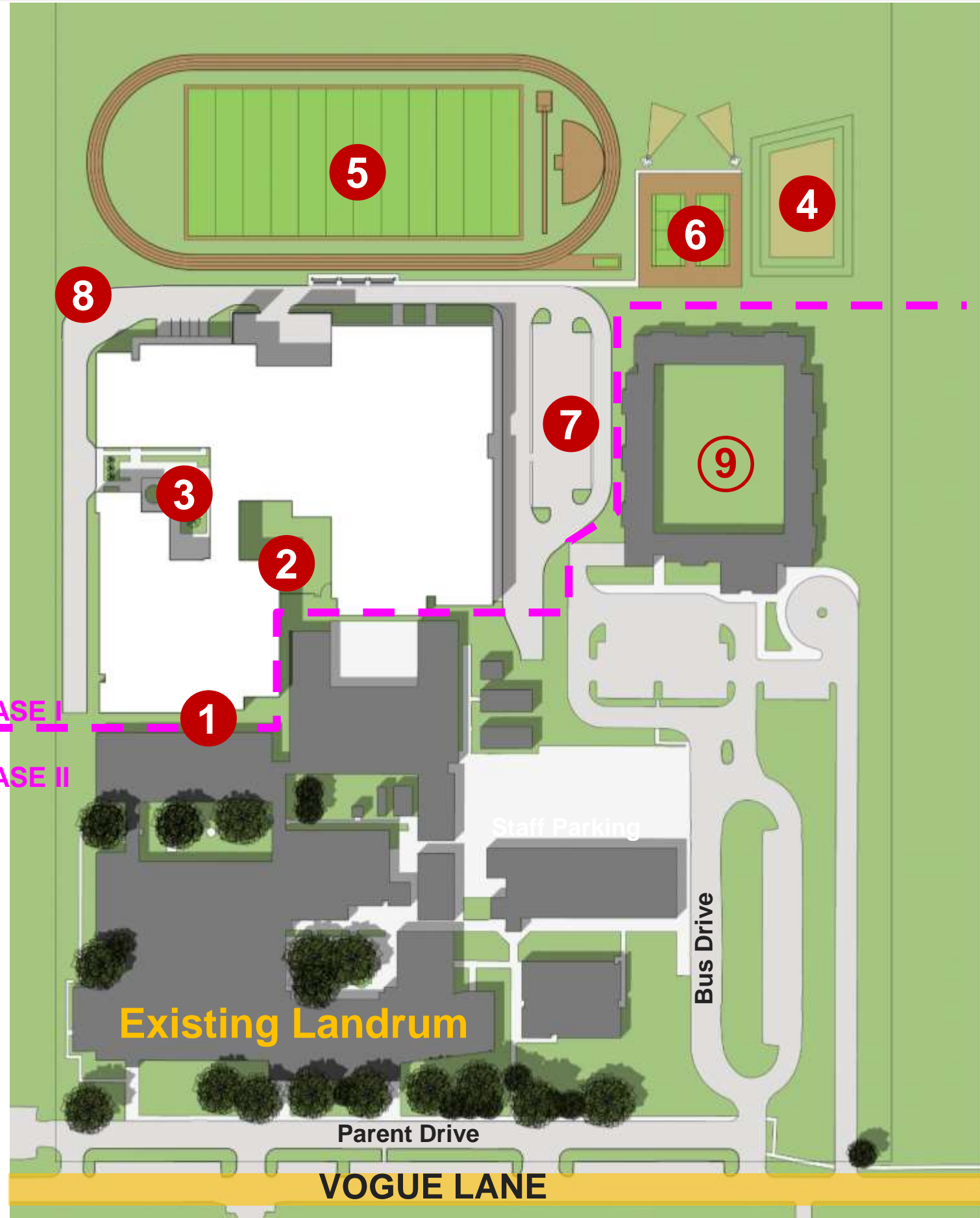


03 Recommendation - Landrum MS Replacement

SITE PLAN - EXISTING



SITE PLAN – PHASE I



Phase I Construction

- ① New Landrum MS Building
- ② Events Courtyard / Entry
- ③ Learning Courtyard
- ④ Storm Detention
- ⑤ New Track / Field
- ⑥ New Multi-Sport Courts
- ⑦ Bus Drop Off / Staff Parking
- ⑧ Service Drive / Fire Lane
- ⑨ Lion Lane School

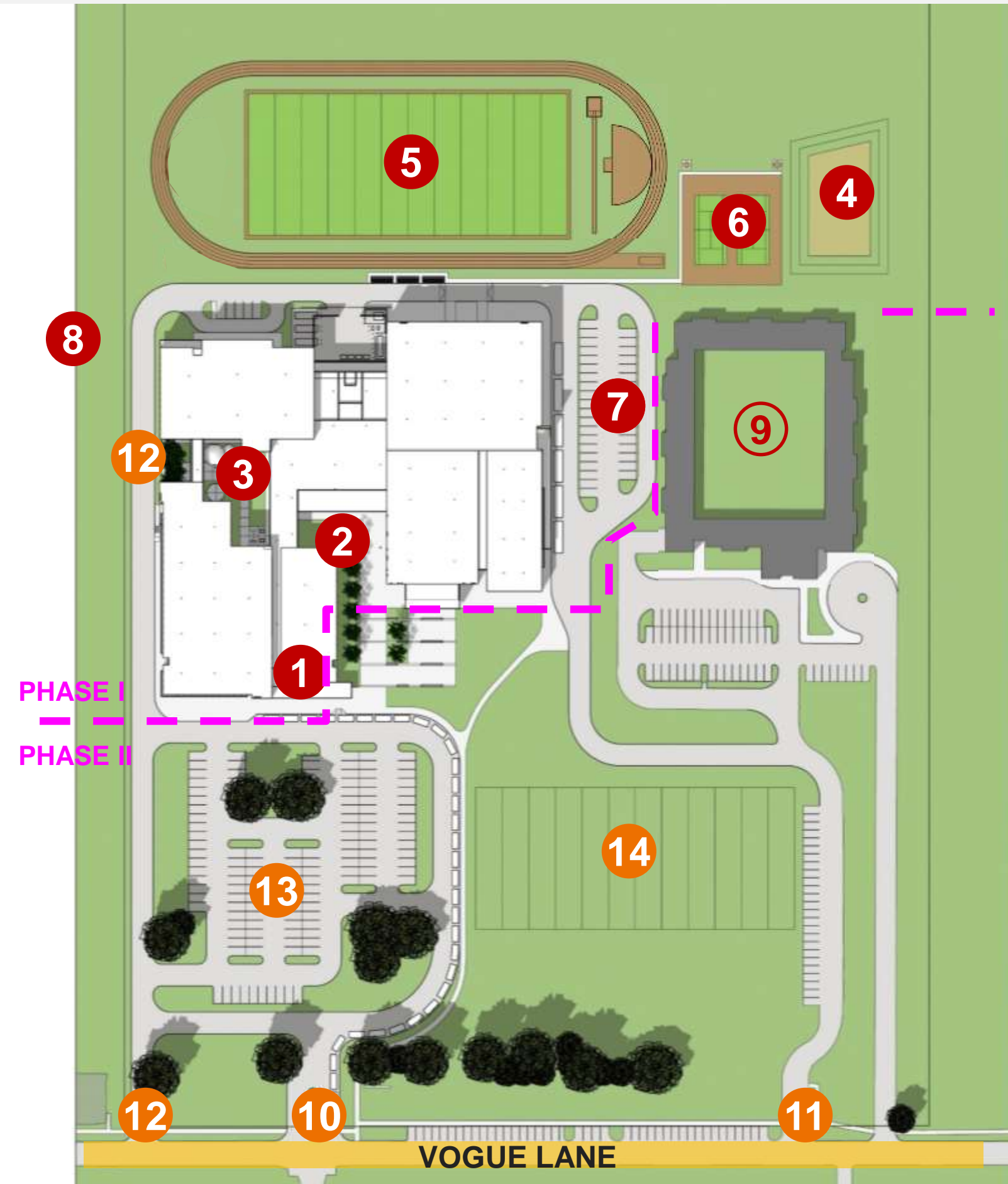
PHASE I

Existing Landrum MS

Remain Operational During Construction

- Middle School
- Parent Drive
- Bus Drive
- Staff Parking

SITE PLAN – PHASE II



Phase I Construction

- ① New LMS Main Entry
- ② Events Courtyard / Entry
- ③ Learning Courtyard
- ④ Storm Detention
- ⑤ New Track / Field
- ⑥ New Multi-Sport Courts
- ⑦ Bus Drop Off / Staff Parking
- ⑧ Service Drive / Fire Lane
- ⑨ Lion Lane School

PHASE I

PHASE II

Phase II Construction

- ⑩ Vehicle Entry – Parent/Visitor + Staff
- ⑪ Bus Drive Entry
- ⑫ SPED Bus Drive + Drop Off
- ⑬ Visitor / Staff Parking
- ⑭ Practice Field



PAT Engagement: Seek Consensus

Site Plan Objectives:

Focus on Access, Location and Campus Continuity

PAT
FEEDBACK

Q: Does the Proposed SITE PLAN meet the objectives?

SITE PLAN
Agree Disagree

1. **General Site Layout**

(Building, Parking, Fields, Drives located in a manner that allows for easy access by public + logical flow for campus activities)

☐☐

2. **Traffic Flow**

(Provides logical paths and separations for drives and parking areas)

☐☐

3. **School Approach / Sense of Arrival**

(Provides a new parent drive and parking lot at the front of school, that preserves the existing mature trees on site)

☐☐

4. **Outdoor Connections**

(Integrates exterior spaces for both learning and community usages)

☐☐

5. **Construction Phasing**

(Provides logical sequence for performing construction while minimizing impact to the occupied/active campus)

☐☐



FLOOR PLAN LEVEL 1

- Administration
- Media Center
- Curriculum
- Collaboration/Flex Space
- Dining Commons
- PE/Athletics
- Fine Arts
- Building Support
- Circulation



FLOOR PLAN LEVEL 2

- Administration
- Media Center
- Curriculum
- Collaboration/Flex Space
- Dining Commons
- PE/Athletics
- Fine Arts
- Building Support
- Circulation

LMS Science

Learning Community (12)

LMS Science

Learning
Courtyard

Open to
Below

Flex

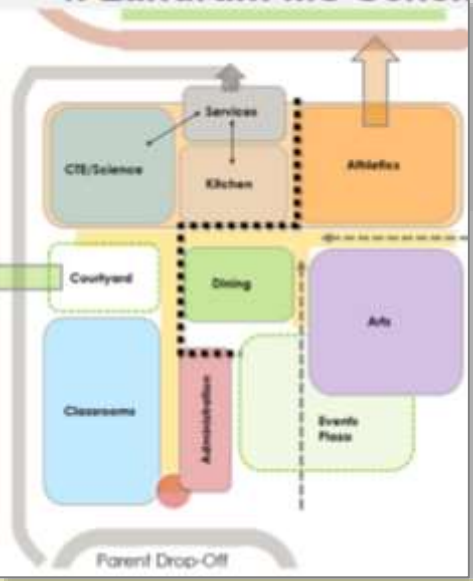
Flex

Open to
Below

Flex

FLOOR PLAN LEVEL 3

- Administration
- Media Center
- Curriculum
- Collaboration/Flex Space
- Dining Commons
- PE/Athletics
- Fine Arts
- Building Support
- Circulation



PAT Engagement: Seek Consensus

Floor Plans Objectives:

Focus on Organization, Adjacencies and Flexibility

PAT
FEEDBACK

Q: Do the Proposed FLOOR PLANS meet the objectives?

SITE PLAN
Agree Disagree

1. Building Organization

(Spaces are organized in a manner that provides proper adjacencies: Entry, Administration, Academic, Library, Dining, Athletic, Auditorium)

☐☐

2. Building Zoning

(Building is able to be separated in ways that allow after hours use)

☐☐

3. Vertical Zoning

(Vertical organization allows for flexibility to zone the learning in either arrangement: departmental or grade level communities)

☐☐

4. Spatial Flexibility

(Planned to allow rooms and spaces to serve multiple functions/uses)

☐☐

5. Circulation

(Pedestrian flow through the building is logical and provides easy connections between spaces: Admin, Learning, Commons, etc.)

☐☐



MAIN ENTRY / VESTIBULE

- Entry Vestibule
- Reception to Admin





RECEPTION: LMS + KIPP

- Landrum Reception
- KIPP Reception





MAIN ENTRY / CORRIDOR

- Entry Space (History / Future)
- View to Media Center





MAIN ENTRY / CORRIDOR

- Entry Space (History / Future)
- View to Media Center





MEDIA CENTER

- Flexible Furniture
- Group Size Variety
- Study + Collaborate





MEDIA CENTER

- Presentation Wall
- Dynamic Display





MEDIA CENTER

- Presentation Wall
- Dynamic Display





FLEX SPACE / CLASSROOMS

- Individual Study
- Group Work
- Collaboration





Instructional Spaces

- CTE Shops + Classrooms
- Special Education
- Collaboration / Flex Space
- Connection between Science / Learning Comm.

Commons / Courtyard

- Dining Commons
- Learning Stair
- Views / Access to Events Courtyard
- Views / Access to Learning Courtyard
- Connection to Auditorium



FLEX / CTE + SCIENCE

- Socialize
- Collaborate
- Demonstrate



FLEX / CTE + SCIENCE

- Socialize
- Collaborate
- Demonstrate





SCIENCE FLEX / BRIDGE

- Socialize
- Collaborate
- Demonstrate





LEARNING STAIR

- Group Presentation
- Commons / Social
- Courtyard View





DINING COMMONS

- Group Presentation
- Commons / Social
- Courtyard View





DINING COMMONS

- Group Presentation
- Commons / Social
- Courtyard View





AUDITORIUM ENTRY

- Front Entry Lobby
- Access to Seating
- Access to Restrooms





AUDITORIUM INTERIOR

- Stage / Presentation
- Side Viewing Platform
- 600 Seat Auditorium





PAT Engagement: Seek Consensus

Teaching & Learning Objectives:

Focus on Spaces, Environment and Flexibility



Q: Does the Proposed ENVIRONMENT meet the objectives?

SITE PLAN
Agree Disagree

1. **Teaching Methodology**

(Spaces are organized to allow for varieties of teaching methods:
Lecture, Collaboration, Demonstration)

☐☐

2. **Personalized Learning**

(Provides flexibility for Group and Individualized work settings)

☐☐

3. **Learning Choices**

(Provides student access to a variety of learning setting spaces)

☐☐

4. **Extended Classrooms**

(Opportunities provided to extend classroom instructional settings
to individual/group flex spaces and outdoor environments)

☐☐

5. **Adaptive Spaces**

(Spaces provided are flexible to serve multiple needs and usages,
and can be converted easily in the future if needed)

☐☐



ENTRY DRIVE - VOGUE LANE



ENTRY APPROACH – PARENT DRIVE



LANDRUM MS MAIN ENTRY



EVENTS ENTRY + COURTYARD



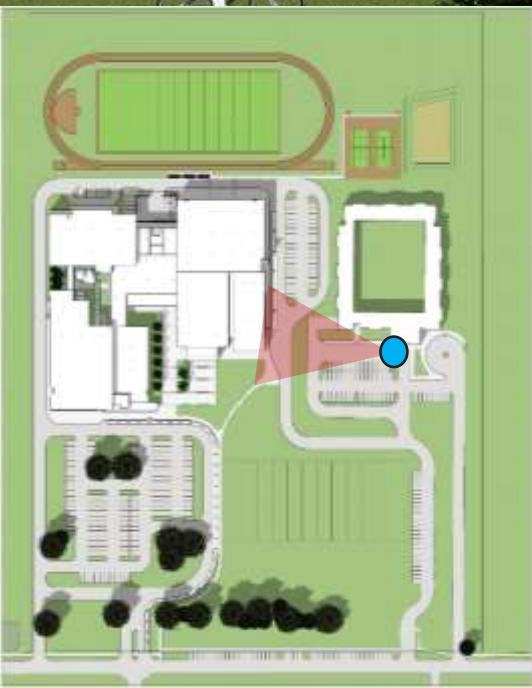
EVENTS COURTYARD



WEST ELEVATION / SERVICE DRIVE



LEARNING COURTYARD



EAST ELEVATION / BUS DROP-OFF

PAT Engagement: Seek Consensus

PAT
FEEDBACK

Consensus

Agreement, harmony, concurrence, accord, unity, solidarity

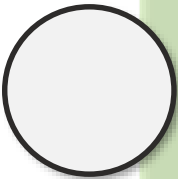
General agreement – “a consensus of opinion among judges”



At this time are you as a member of the PAT prepared to make a recommendation to the SBISD Board of Trustees that you are in support of the Landrum Middle School Replacement Plan?

PAT Member Name:

Signature of PAT Member



**I Support the
recommendation**

...I Do NOT Support the Recommendation for the following Reason(s)

Agenda: PAT Meeting 5

5 mins: **1. Welcome + Meeting Overview**
PAT Charge + Mtg-5 Objective

75 mins: **2. Review Recommended Plan – Draft Presentation**

- * Introduction: Project Scope & Schedule
- * PAT Engagement Process Overview
- * **Recommendation - Landrum MS Replacement**
 - Site Plan (PAT Input)
 - Floor Plans (PAT Input)
 - Teaching & Learning (PAT Input)
- * **PAT Design Consensus Survey** (PAT Vote)

5 mins: **3. Closing Remarks**
Wrap-up / Next Steps