



## **VALLEY OAKS** Elementary School Additions

project advisory team

September 21, 2022 | 3:45pm – 5:00pm

[PAT meeting #1](#)

## PAT #1 Meeting AGENDA

**Project & Team Introductions**

**PAT Charge & Team**

**Project Overview & Schedule**

**Design Lenses**

**Fact Finding Review**

**Guiding Principles and Goals (VISIONING SESSION #1)**

**Program Overview**

**Site Analysis**

**Next Steps**

WHY ARE WE HERE?

**2022 BOND:**  
**CLASSROOM ADDITION**



## MEET THE TEAM



**Kimberly Christy**

Valley Oaks Elementary School  
Principal

**Brooke Monteith**

Valley Oaks Elementary School  
Assistant Principal

**Margie Moerbe**

Valley Oaks Elementary School  
Assistant Principal

**Travis Stanford**

Associate Superintendent for Operations

**Geoffrey Bay**

Project Manager



**Brandon Ross**

Partner

**Philip Stewart**

Principal

**Nicole Jordan**

Project Architect / Designer

**Gloria Carlos**

Senior Project Manager

**Davilla Lima**

Project Architect



## SUPERINTENDENT PROJECT ADVISORY TEAM (PAT) CHARGE

### OVERVIEW

A Project Advisory Team (PAT) will be chartered for each new school construction or major renovation project in the 2022 Bond Program. Each PAT is an advisory ad hoc committee, representing the various stakeholders of a school community. As such, the PAT is chartered for a defined purpose and time and holds no statutory authority.

**The goal of the PAT is to ensure that parents, staff and community members have the opportunity to take part in the planning and design of new schools.**

The PAT members will serve as communicators to and from the community during the schematic design and development phases of the project and participate in discussions that will lead to recommendations. The PAT concludes its work once construction begins.

## SUPERINTENDENT PROJECT ADVISORY TEAM (PAT) CHARGE

### CHARGE

**Each Project Advisory Team's (PAT) members are charged with providing input into planning and design development for their school's new construction** or major renovation project in the 2022 Bond Program. The PAT will meet as needed throughout the project, from initial planning, through design to the start of construction. Meeting agendas and minutes will be posted on the school's bond project website.

At the start of the project, representatives of the project architectural firm and the SBISD Project Manager will inform the PAT of the general project scope (new construction or renovation) and the proposed schedule of the work.

**The PAT will work collaboratively and cooperatively with the architect and SBISD Project Manager to conceptualize, develop and refine the project's goals and design.** The PAT will work with the architect and the SBISD Planning & Construction staff to ensure meeting the project's scope and schedule as defined by the 2017 Bond Program. The PAT will reach proposed recommendations through consensus.

Any concerns identified by the PAT members should immediately be brought to the attention of the SBISD Project Manager.

## SUPERINTENDENT PROJECT ADVISORY TEAM (PAT) CHARGE

### CHARGE (continued)

**The PAT will advise on recommendations regarding the interior and exterior appearance of the campus.** These recommendations will be presented by the project's architects to the Superintendent of Schools and based on the approval from the Superintendent will then be presented to the Board of Trustees for their approval. Recommendations are subject to review and change by district administration and/or the Board of Trustees. All recommendations must be in alignment with the District's Educational Specifications and Design and Construction Standards.

The Board of Trustees may act upon the recommendations developed with PAT input by approving, amending, altering or not approving all or any part of the recommendations.

Areas of focus from which the PAT should refrain include recommendations regarding school programs, policies and procedures, boundaries of district facilities, instructional arrangements and/or educational pedagogy decided upon and/or subject to District, State and Federal laws.

**Project Advisory Teams are essential participants in the planning and design process. Team members are asked to agree to participate in various meetings throughout the process.**

**PAT TEAM**  
23 members

**Campus Principal**

**Assistant Principals**

**Parents**

**Campus Staff**

**PTA President**

**HOA Representatives**

**CIT Members**

## OVERALL PROJECT SCOPE

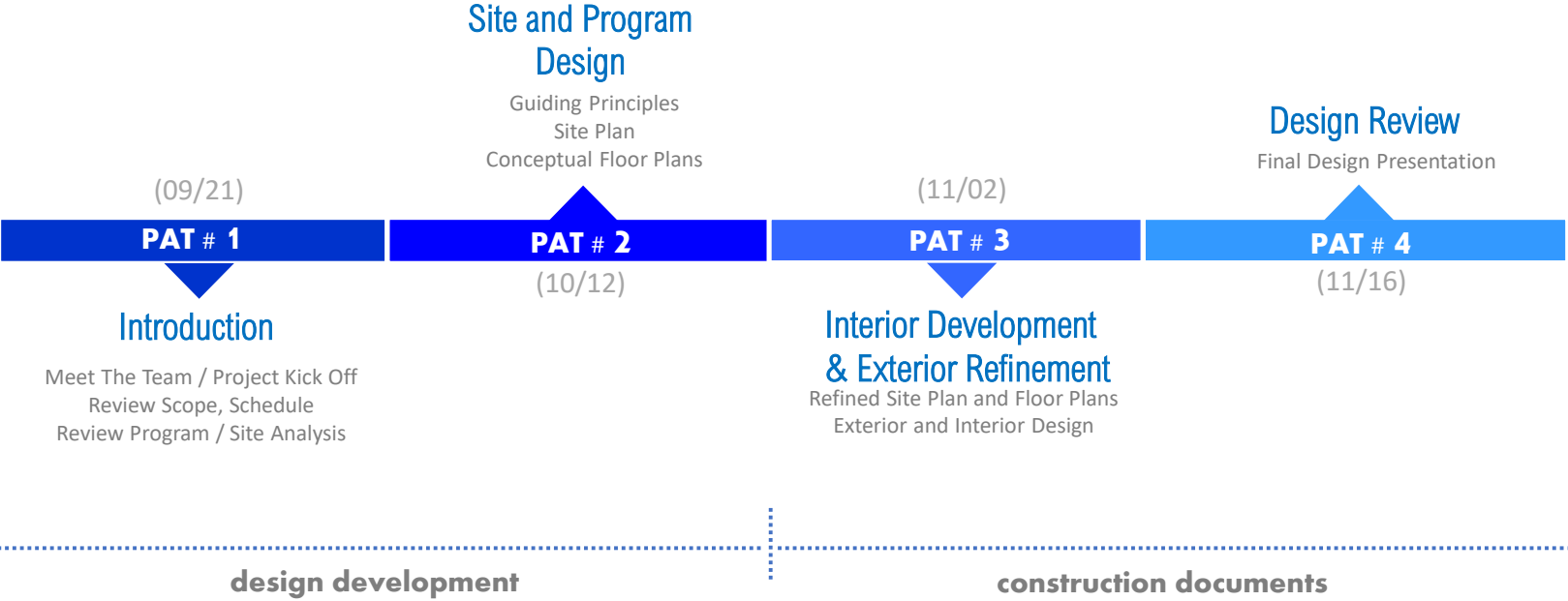
VALLEY OAKS ES ADDITIONS

CLASSROOM AND CAFETERIA ADDITION  
WHILE THE SCHOOL IS IN OPERATION

OPENING OF FALL 2024

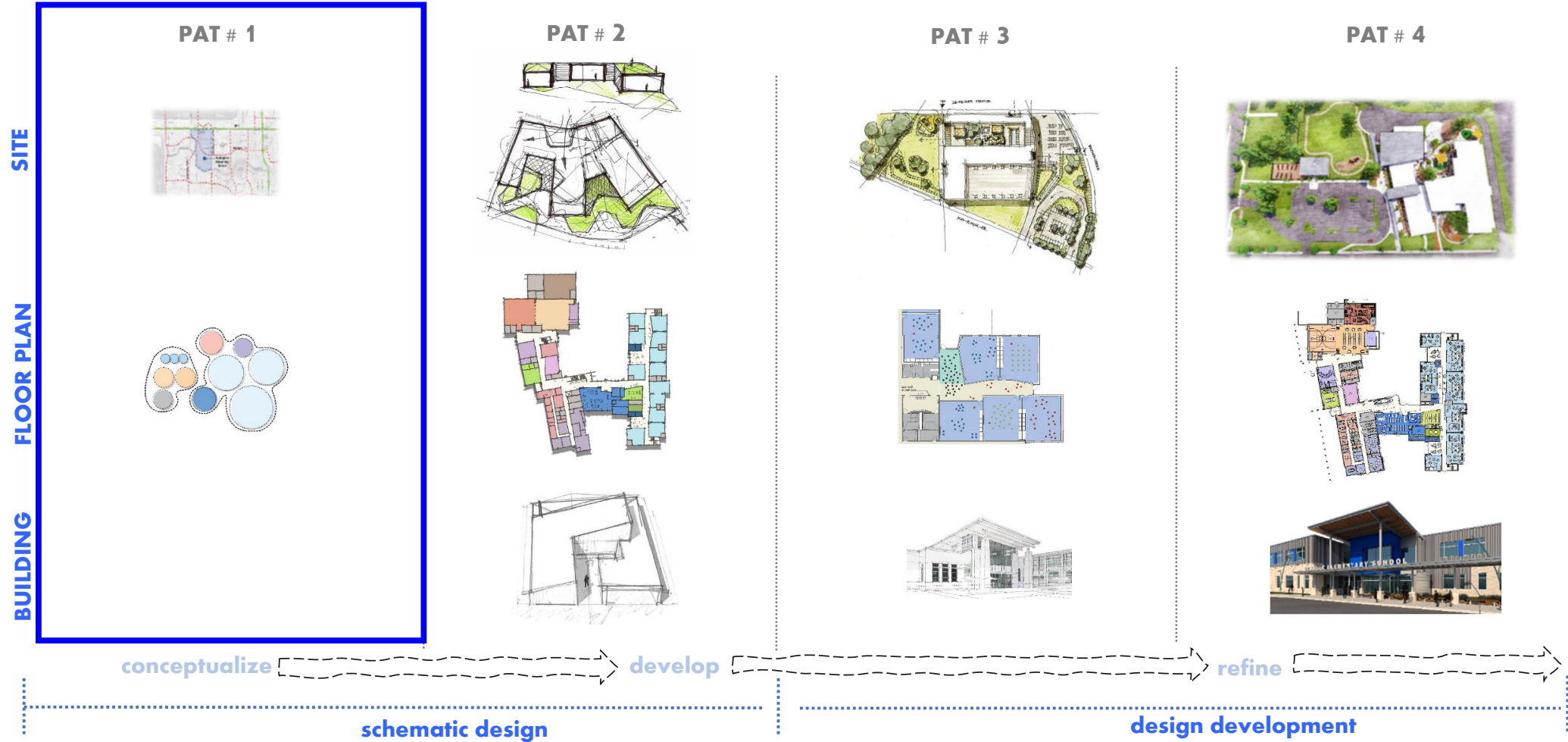


PAT SCHEDULE DETAIL (meetings 3:45 PM - 5:00 PM)

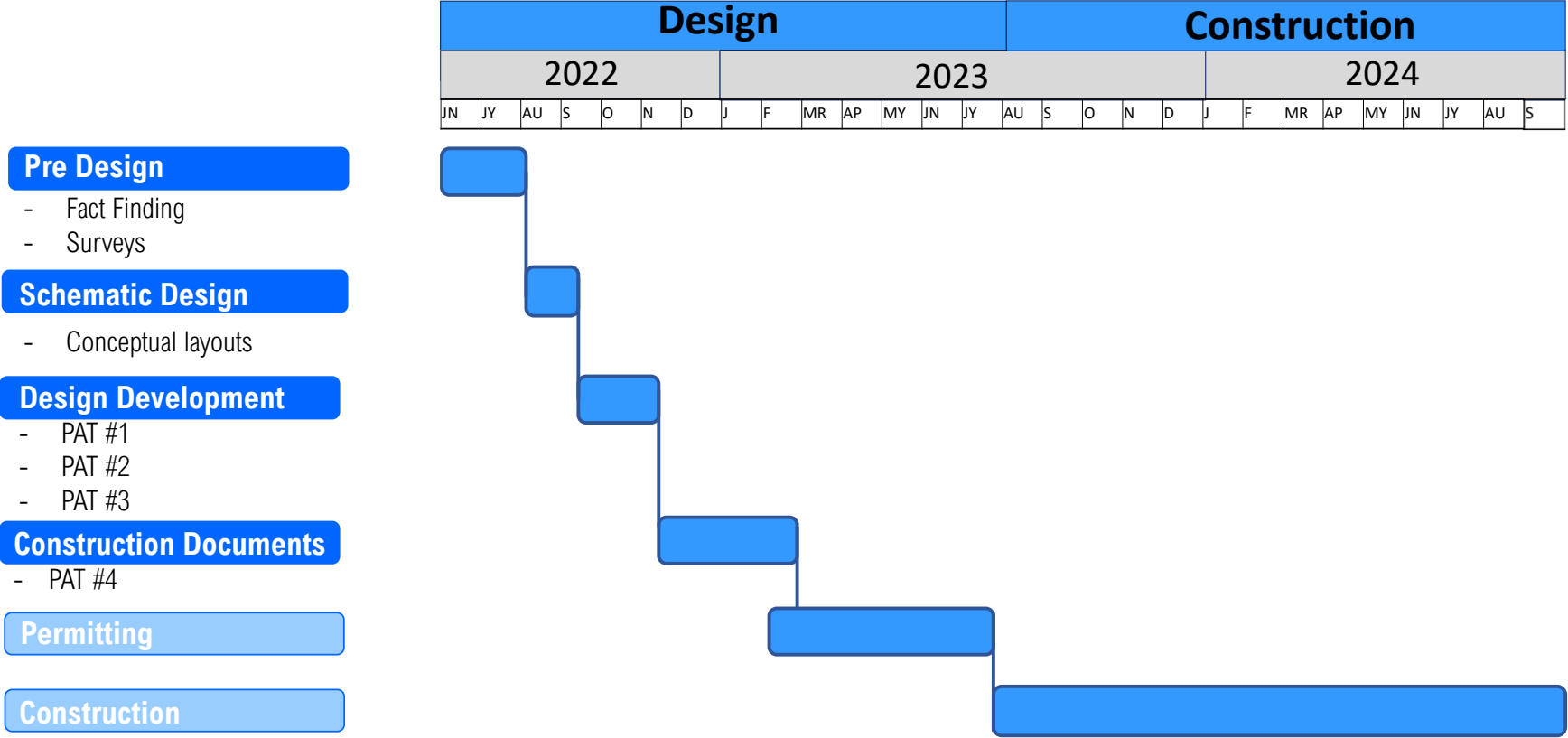


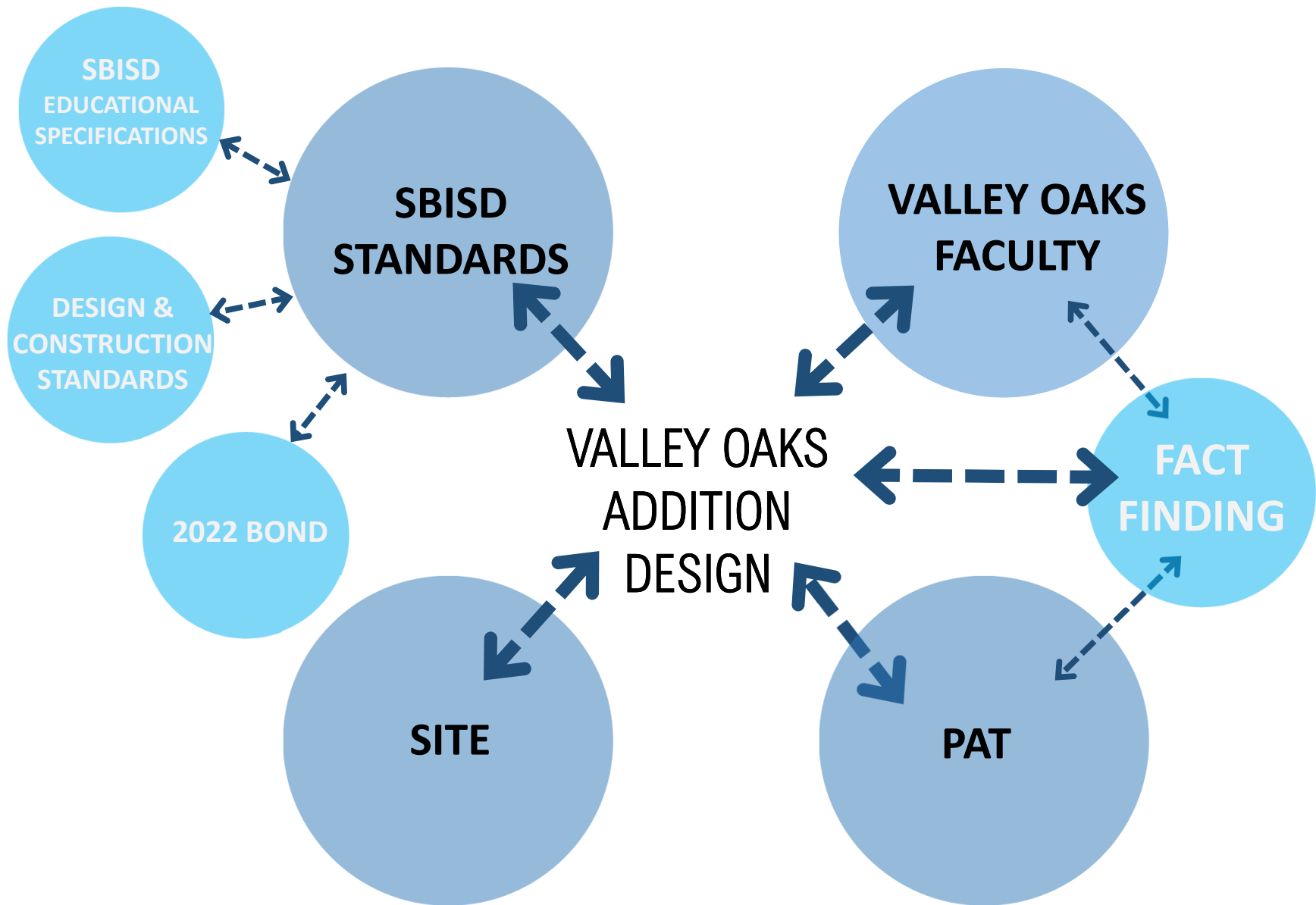


# PAT BUILDING DESIGN PROCESS



# OVERALL PROJECT SCHEDULE





What makes Valley Oaks Elementary  
School unique?

## VALLEY OAKS IS....

**A NEIGHBORHOOD SCHOOL**

**A TIGHT KNIT COMMUNITY**

**WHERE EVERYONE KNOWS EACH OTHER**

**SUPPORTIVE**

**PASSIONATE**

**WELCOMING**

**FAMILY**

**AUTHENTIC**

**LOYAL**

## FACT FINDING REVIEW

**Discussion/** FACT FINDING

Faculty Interviews



What are your favorite things about Valley Oaks Elementary School?

## FACT FINDING REVIEW

**Discussion/** FACT FINDING

Faculty Interviews



**SCHOOL IS WARM AND INVITING**

**LIBRARY IS BEAUTIFUL AND OPEN**

**THE FLEX SPACES IN THE PODS ENCOURAGE  
COMMUNITY AND UNITY**

**NICE OFFICE SPACE**

**LARGE MAIN HALLWAY FOR BETTER  
TRANSITIONS**

**BUTTERFLY GARDEN IS BEAUTIFUL**



MAIN ENTRY





EAST ELEVATION





CAFETERIA



## GUIDING PRINCIPLES AND GOALS

### Visioning Session – Developing the PAT Guiding Principles

1. Describe what helps make Valley Oaks Elementary School so **special and unique**.
2. Describe what are your top three **favorite aspect** of the existing campus.
3. What piece of the building would you like to **replicate, reinforce, or be inspired in** the Addition?

SITE ANALYSIS Existing Overall Site





SITE ANALYSIS Existing Site Buildings



- Site Buildings

## SITE ANALYSIS Existing Circulation



- Site Buildings
- Circulation



SITE ANALYSIS Existing Trees / Play Areas



- Site Buildings
- Circulation
- Trees / Play Areas

## SITE ANALYSIS Setbacks



- Site Buildings
- Circulation
- Trees / Play Areas
- Setbacks



## SITE ANALYSIS Construction Buffer



- Site Buildings
- Circulation
- Trees / Play Areas
- Setbacks
- Construction Buffers

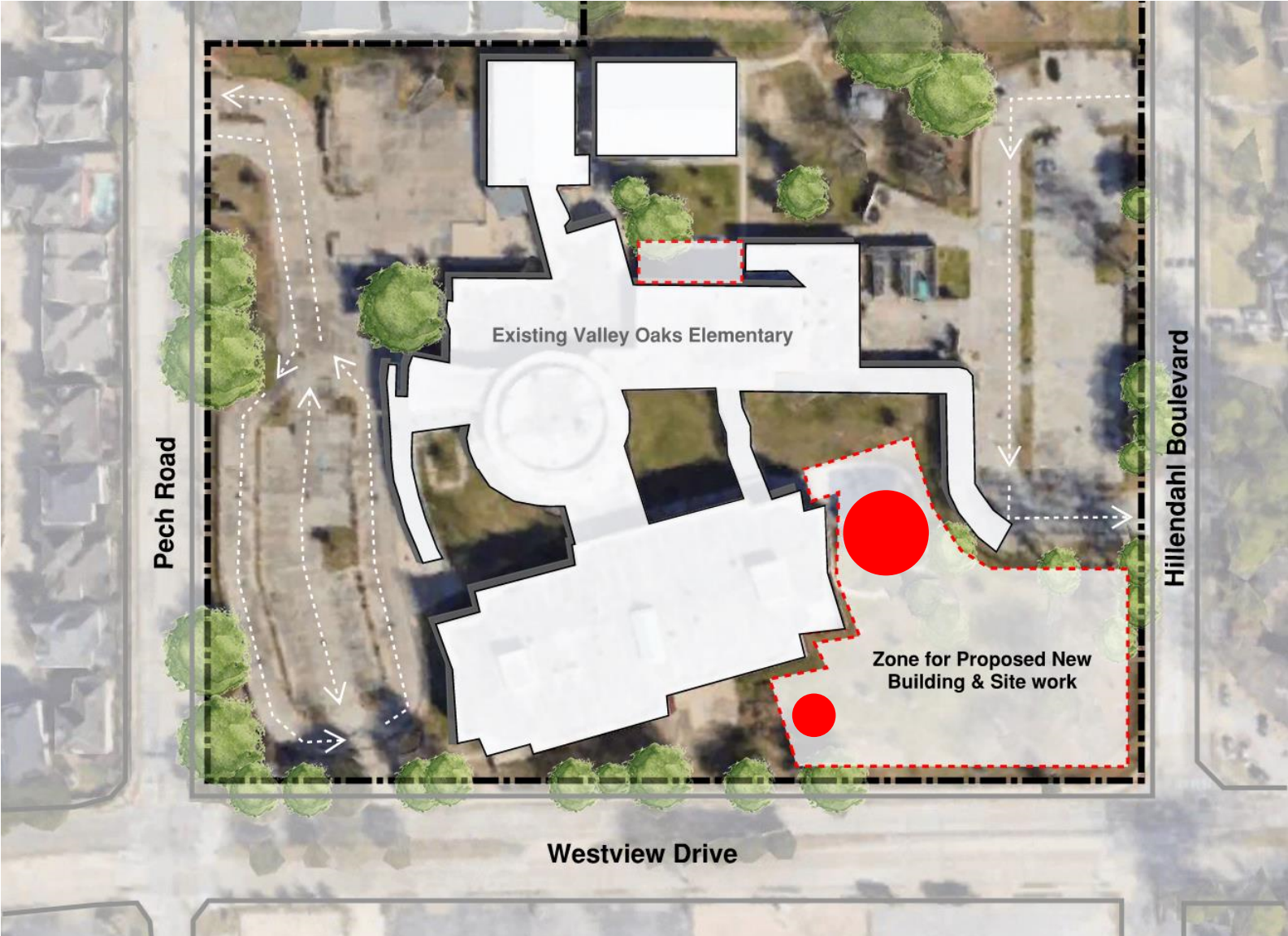
## SITE ANALYSIS **Buildable Area**



- **Site Buildings**
- **Circulation**
- **Trees / Play Areas**
- **Setbacks**
- **Construction Buffers**
- **Buildable Area**



SITE ANALYSIS Impacted Area



- Site Buildings
  - Circulation
  - Trees / Play Areas
  - Setbacks
  - Construction Buffers
  - Buildable Area
- Impacted Areas**
- Butterfly Garden
  - Play Area

POLLING QUESTION

[WWW.MENTI.COM](https://www.menti.com)

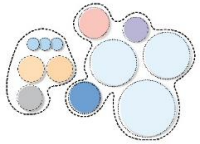
CODE: 5987 7434

**DO YOU UNDERSTAND THE OVERALL PROJECT  
SCOPE AND THE PAT RESPONSIBILITIES?**

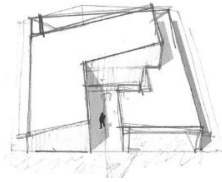
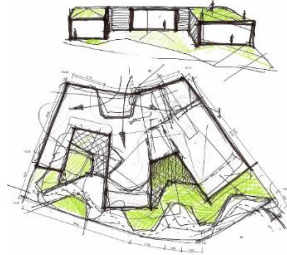


## PAT BUILDING DESIGN PROCESS

**PAT # 1**



**PAT # 2**



**PAT # 3**



**PAT # 4**



### **Next PAT meeting**

October 12, 2022 3:45 PM – 5:00 PM



**Thank you!**

**Valley Oaks Elementary School**