



Nottingham Elementary School

project advisory team

May 12, 2021 3:30pm – 5:30pm

design meeting #6

TEAM



Becky Hagan
Nottingham Elementary School Principal

Travis Stanford
Associate Superintendent for Operations

Max Buja
Director of Planning and Construction

Noel Moreno
Project Manager

Kris Drosche
Project Manager



Brandon Ross
Partner

Melissa Turnbaugh
Partner

Jorge Tiscareño
Design Principal

Daniel De La Garza
Principal / Senior Designer

Philip Stewart
Senior Project Manager

Juan Valdez
Project Manager



PAT TEAM

Campus Principal

Becky Hagan

Assistant Principal

Sherrie Folger

Parents

Tara Cunningham-Baker
Kristin Anderson

Campus Staff

Kelli Atkinson
Sabrina Lay

PTA President

Linda Dang

HOA Representatives

Ysella Kaseman
Peter DallePezze
Cassie McClung

CIT Members

Watson Potter
Wayne Watson
Courie Anderson
Sarah Davidson
Tonya Spell
Megan Kessler
Claire Mercaldo
Payton Kingsley
Sarah Dale
Sabrina Lay
Melanie Marshall
Thomas Debesse
Jeanette Choy
Kelly Borally
Stacey Zubair

Business Representative

James Warren

PAT #6 Meeting AGENDA

5 min	PAT Charge & Process, Project Overview, Schedule, Guiding Principals
10 min	Site and Floor Plan Refinement Update
15 min	Review Exterior Concept Refinements
20 min	Break Out Group Discussion for Exterior Concepts
10 min	Re-group and Recap on Exterior Concept Discussions and Vote
15 min	Review Interior Concept Options
20 min	Break Out Group Discussions for Interior Concepts
10 min	Re-group and Recap on Interior Concept Discussions
5 min	Next Steps

SUPERINTENDENT PROJECT ADVISORY TEAM (PAT) CHARGE

GOAL

- The goal of the PAT is to ensure that parents, staff and community members have the opportunity to take part in the planning and design of new schools.
- The PAT will meet as needed throughout the project, from initial planning, through design to the start of construction.
- The PAT concludes its work once construction begins.

CHARGE

- Each Project Advisory Team's (PAT) members are charged with **providing input into planning and design development** for their school's new construction or major renovation project in the 2017 Bond Program.
- The PAT members will **serve as communicators** to and from the community during the design phases of the project and participate in discussions that will lead to recommendations.
- Recommendations will not regard standards, programs, policies, and pedagogy.
- These recommendations will be reached through consensus, and be presented to the Board of Trustees.



THOUGHTFUL EXPLORATION



HANDS ON ENGAGEMENT



INFORMED AND COLLABORATIVE DECISION MAKING

OVERALL PROJECT SCOPE

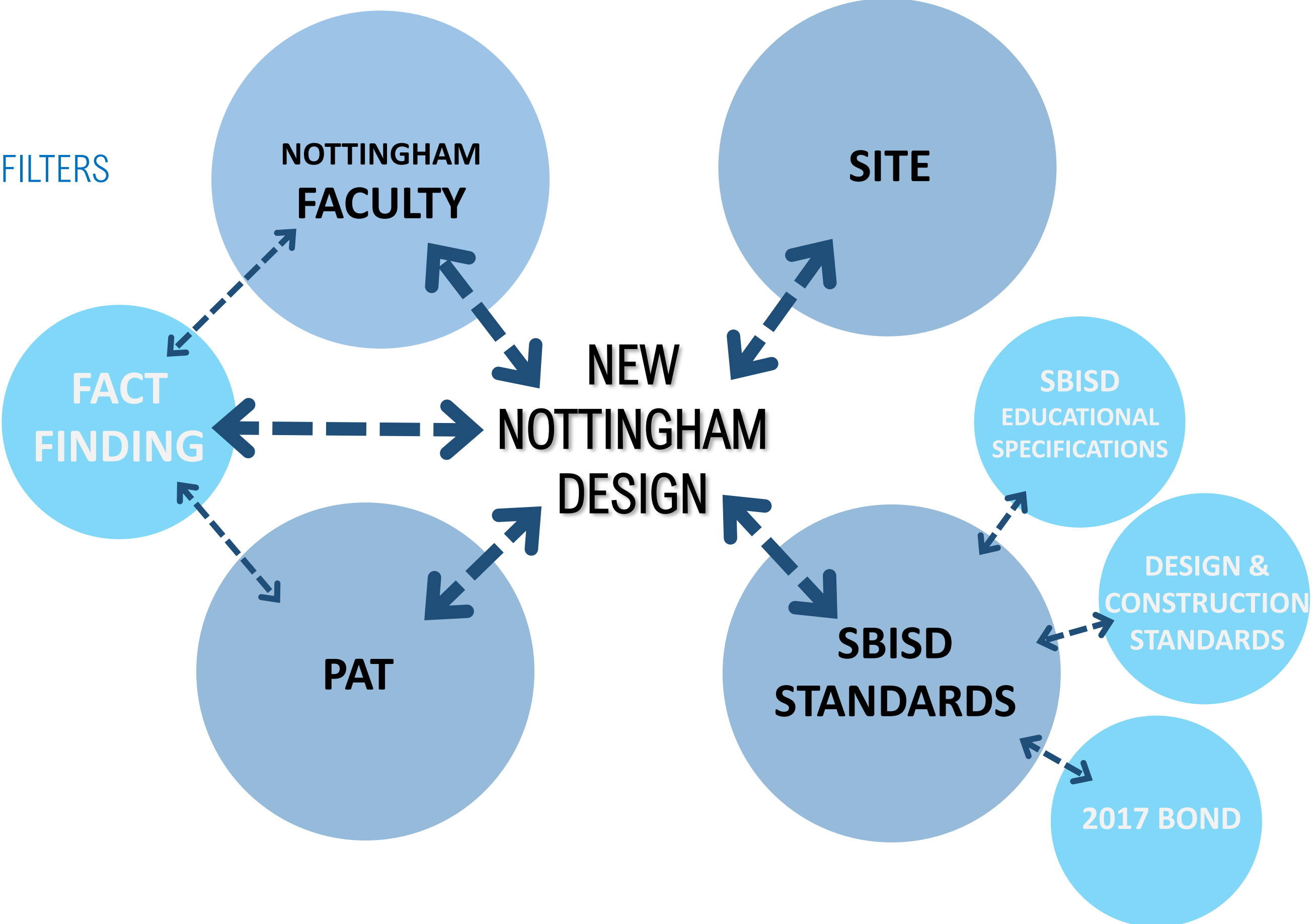
REPLACEMENT NOTTINGHAM ES
min 750 STUDENT CAPACITY
+/- 105,000 GSF

REPLACE SCHOOL ON EXISTING CAMPUS
WHILE EXISTING SCHOOL IS OPERATIONAL

OPENING OF FALL 2023



DESIGN LENS FILTERS

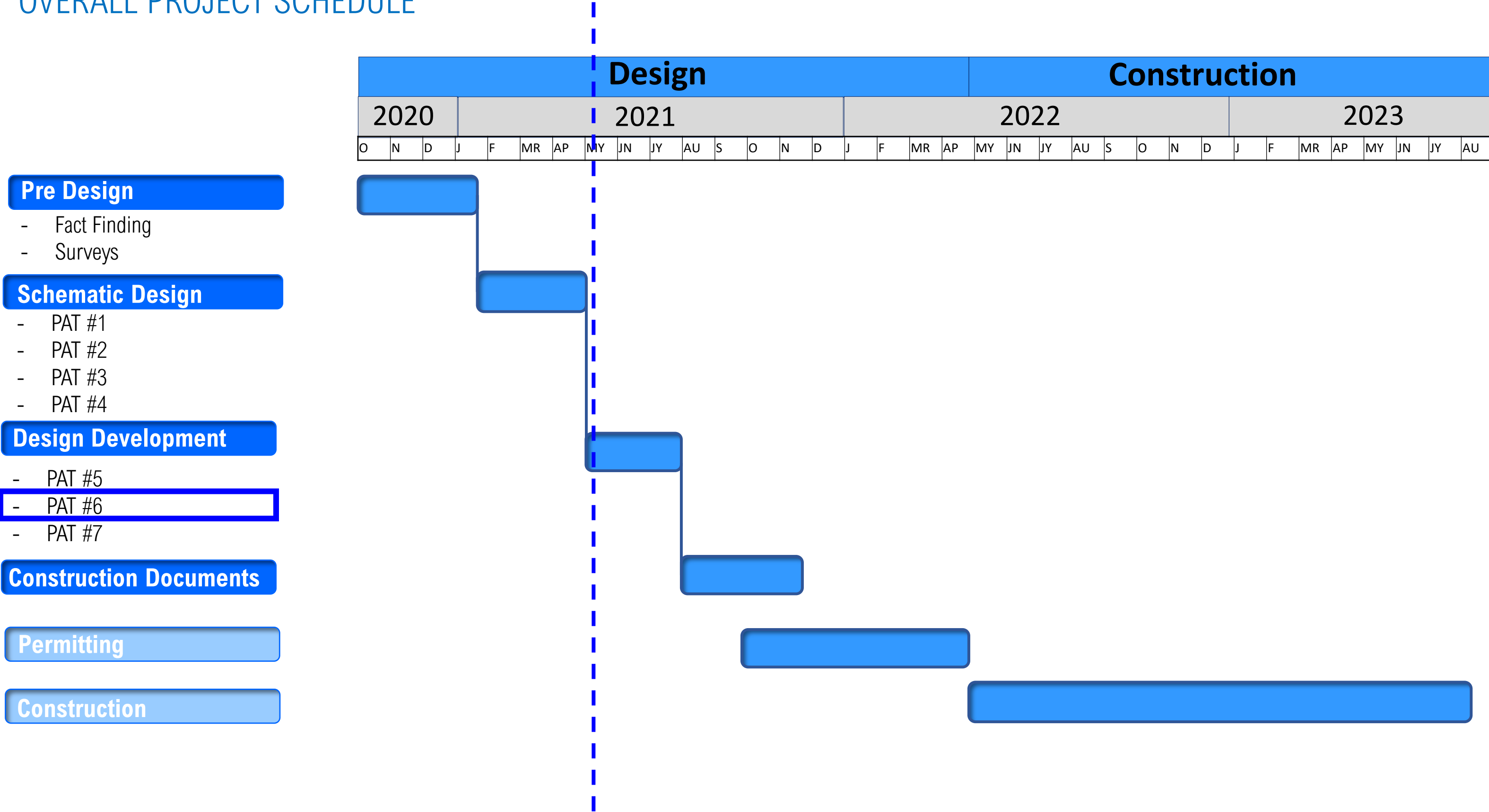


PAT GUIDING PRINCIPLES

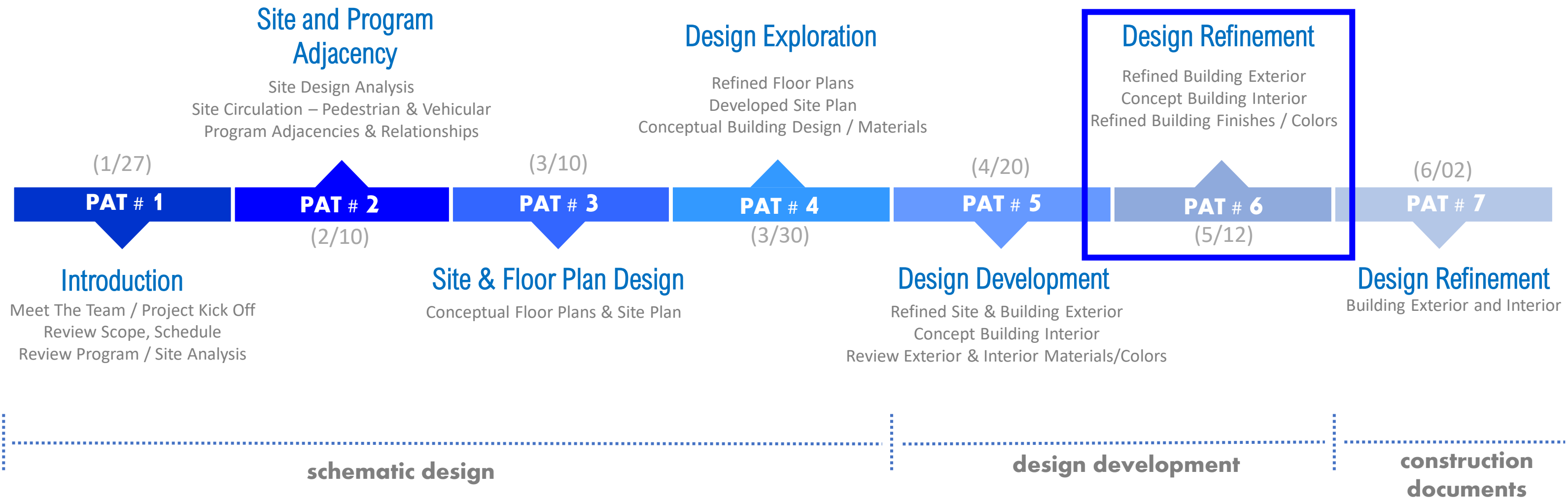
We take these with us moving forward



OVERALL PROJECT SCHEDULE



PAT SCHEDULE DETAIL (meetings 3:30 PM - 5:30 PM)



PAT BUILDING DESIGN PROCESS

SITE

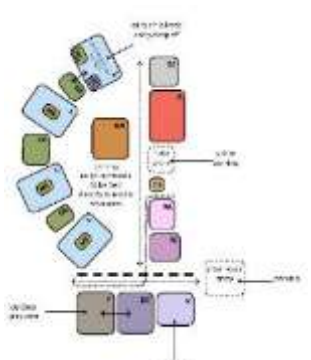
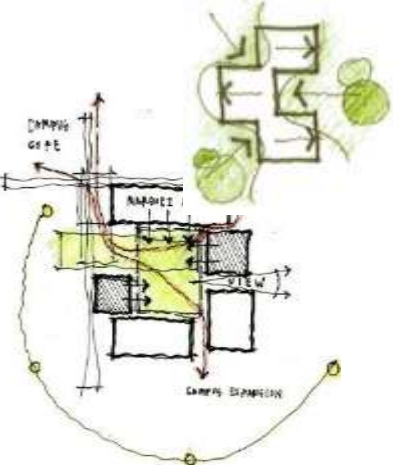
FLOOR PLAN

BUILDING

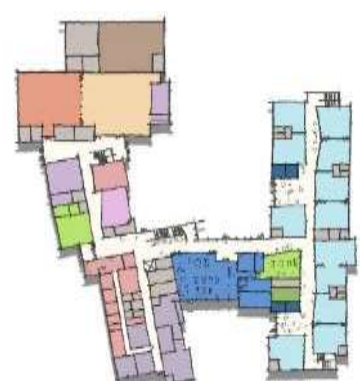
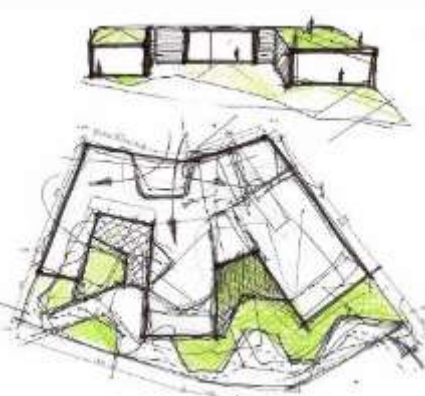
✓
PAT # 1



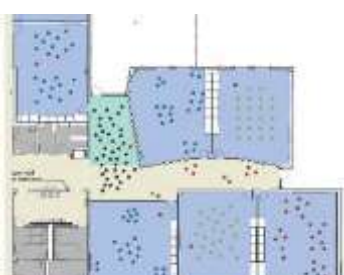
✓
PAT # 2



✓
PAT # 3



✓
PAT # 4



✓
PAT # 5



PAT # 6



conceptualize

develop

refine

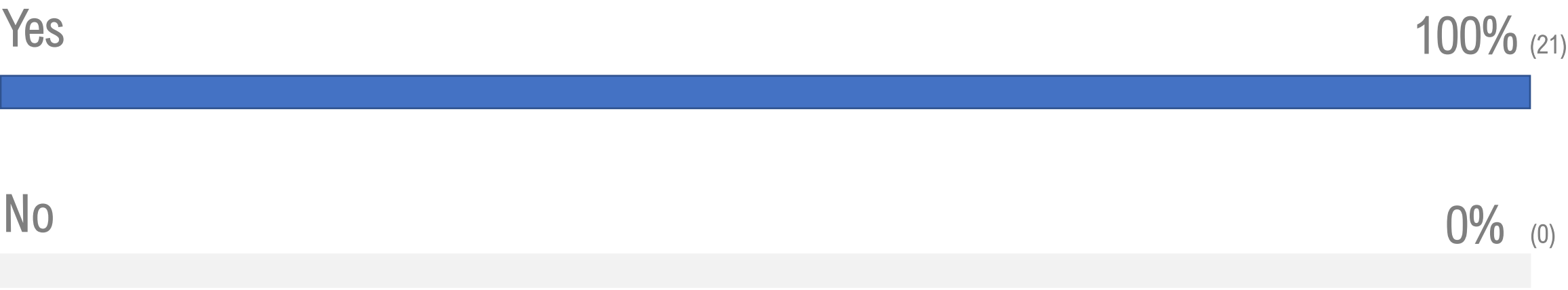
schematic design

design development

PAT #5 RIGHT DIRECTION POLL

Poll Result

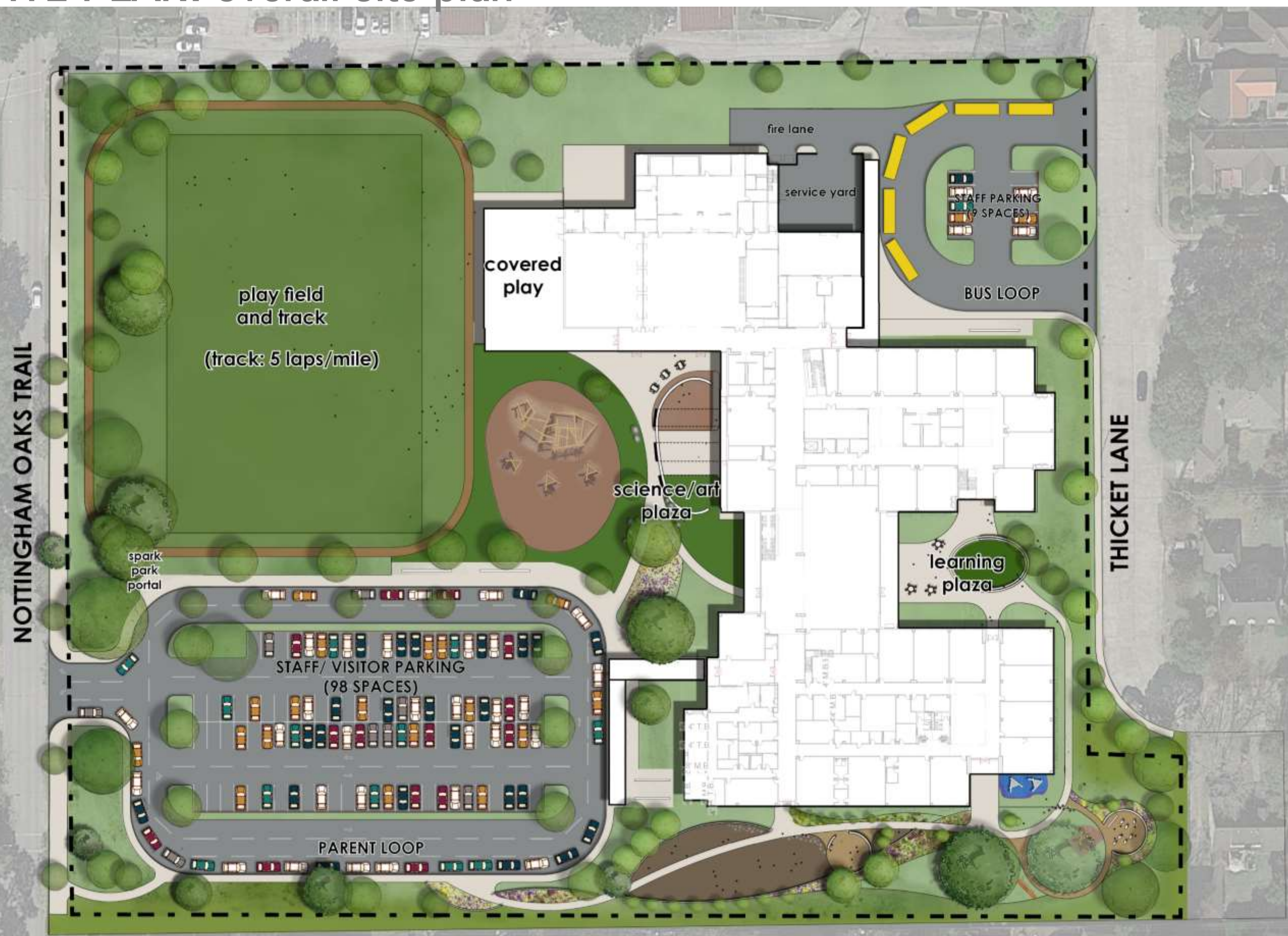
Are we heading in the right direction for the New Nottingham Elementary design after PAT#5?



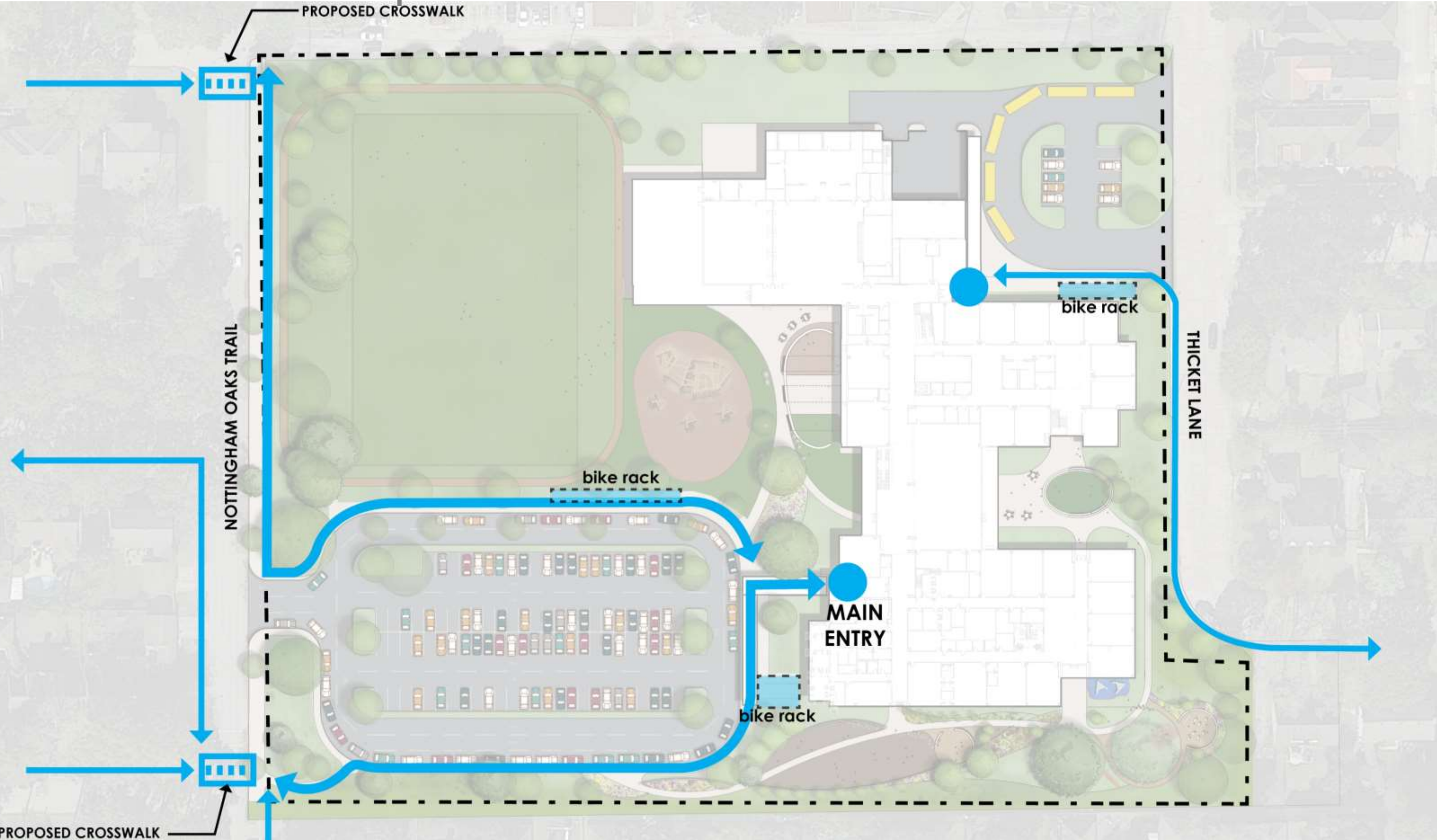
** 3 PAT members did not vote

Site and Floor Plan Refinement

REFINED SITE PLAN: overall site plan

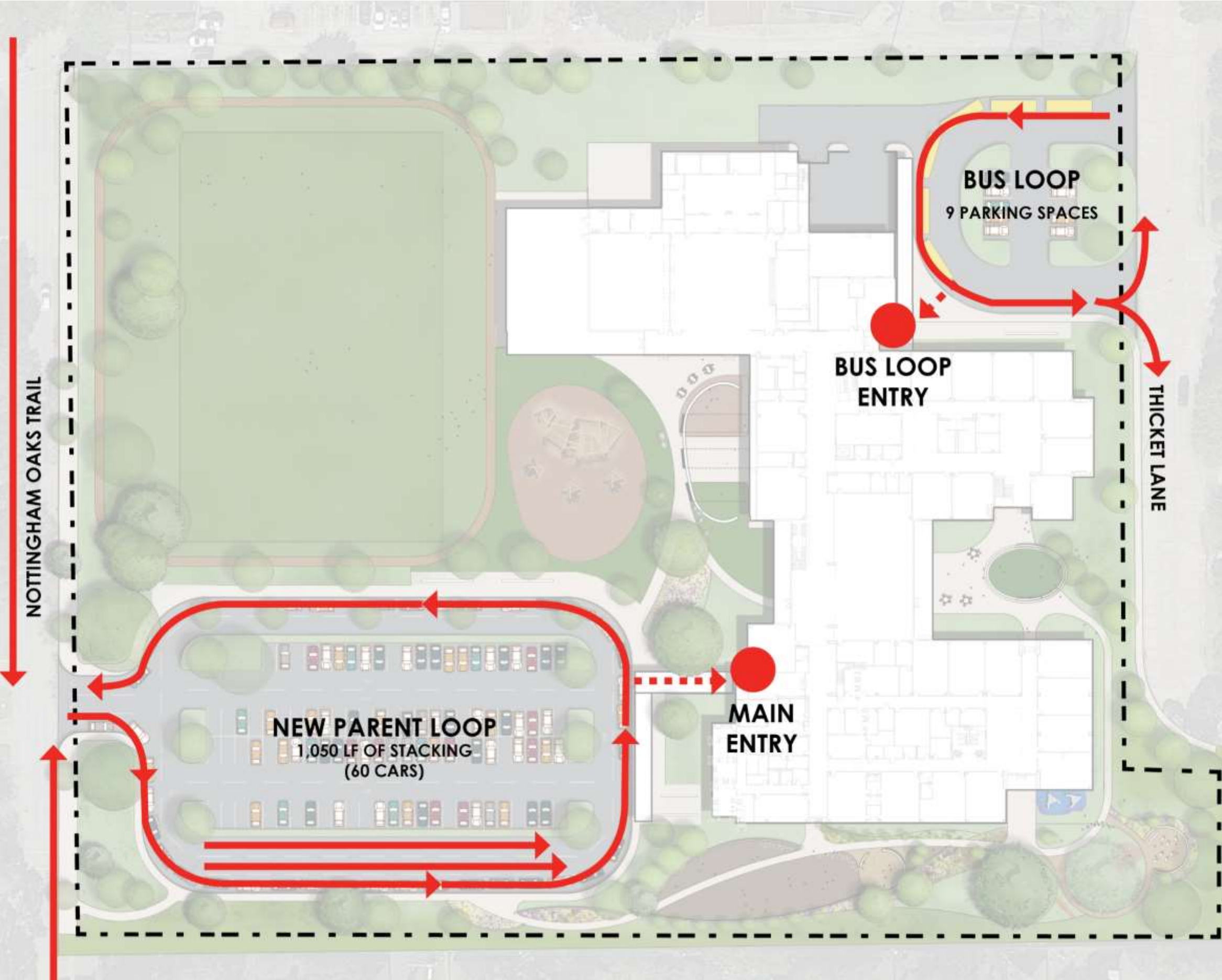


REFINED SITE PLAN: pedestrian flow

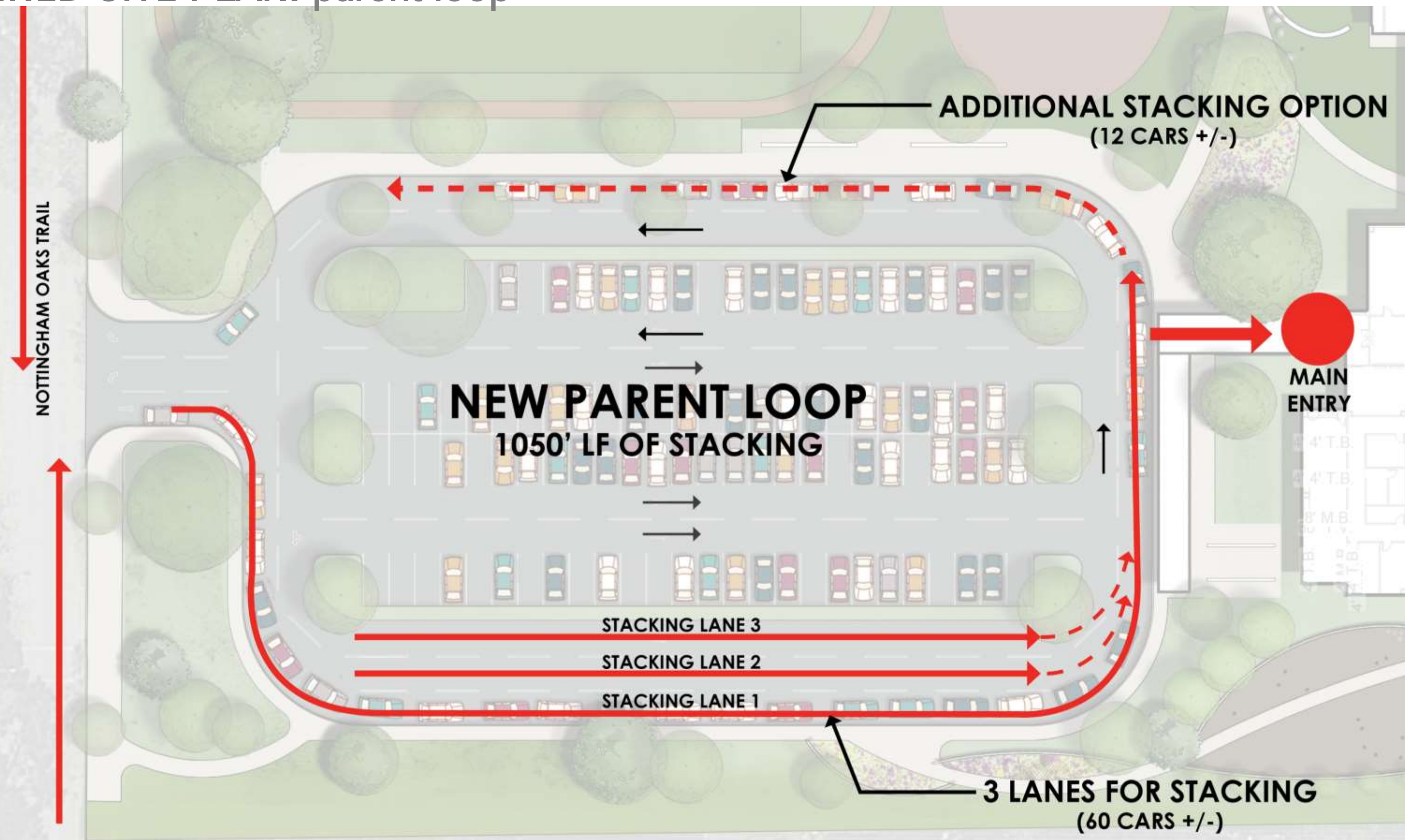


NOTTINGHAM ELEMENTARY SCHOOL

REFINED SITE PLAN: traffic flow



REFINED SITE PLAN: parent loop



REFINED SITE PLAN: parent loop: existing

NOTTINGHAM OAKS TRAIL

EXISTING LOOP
400' LF OF STACKING
(20 CARS)

REFINED SITE PLAN: outdoor space fencing



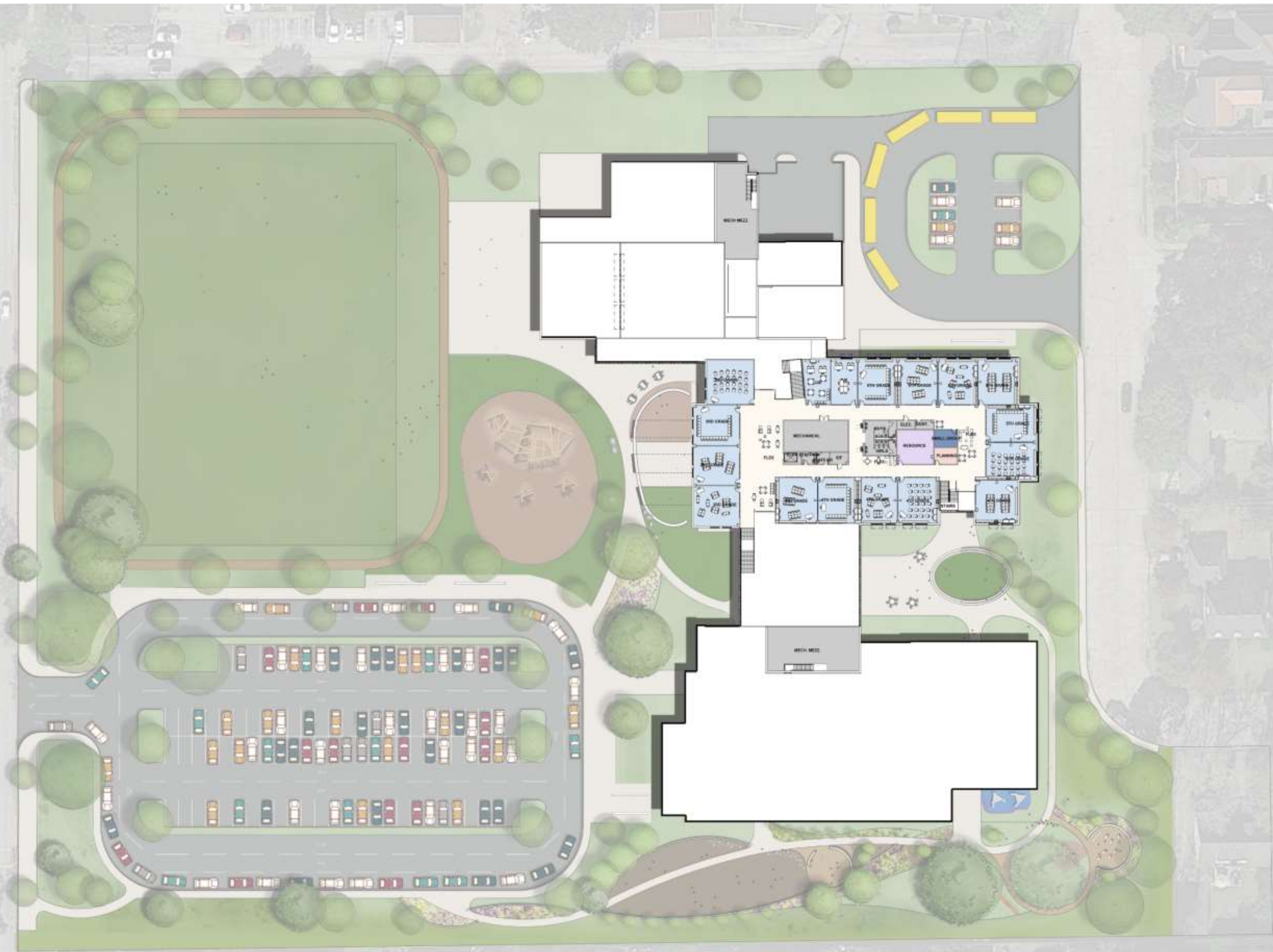
REFINED SITE PLAN: outdoor space



REFINED FLOOR PLANS: first floor



REFINED FLOOR PLANS: second floor



Exterior Character Development

PAT#5 RECAP: EXTERIOR DEVELOPMENT



OPTION 1



OPTION 2



PAT#5 RECAP: EXTERIOR DEVELOPMENT



OPTION 1



OPTION 2



PAT#5 RECAP: EXTERIOR DEVELOPMENT

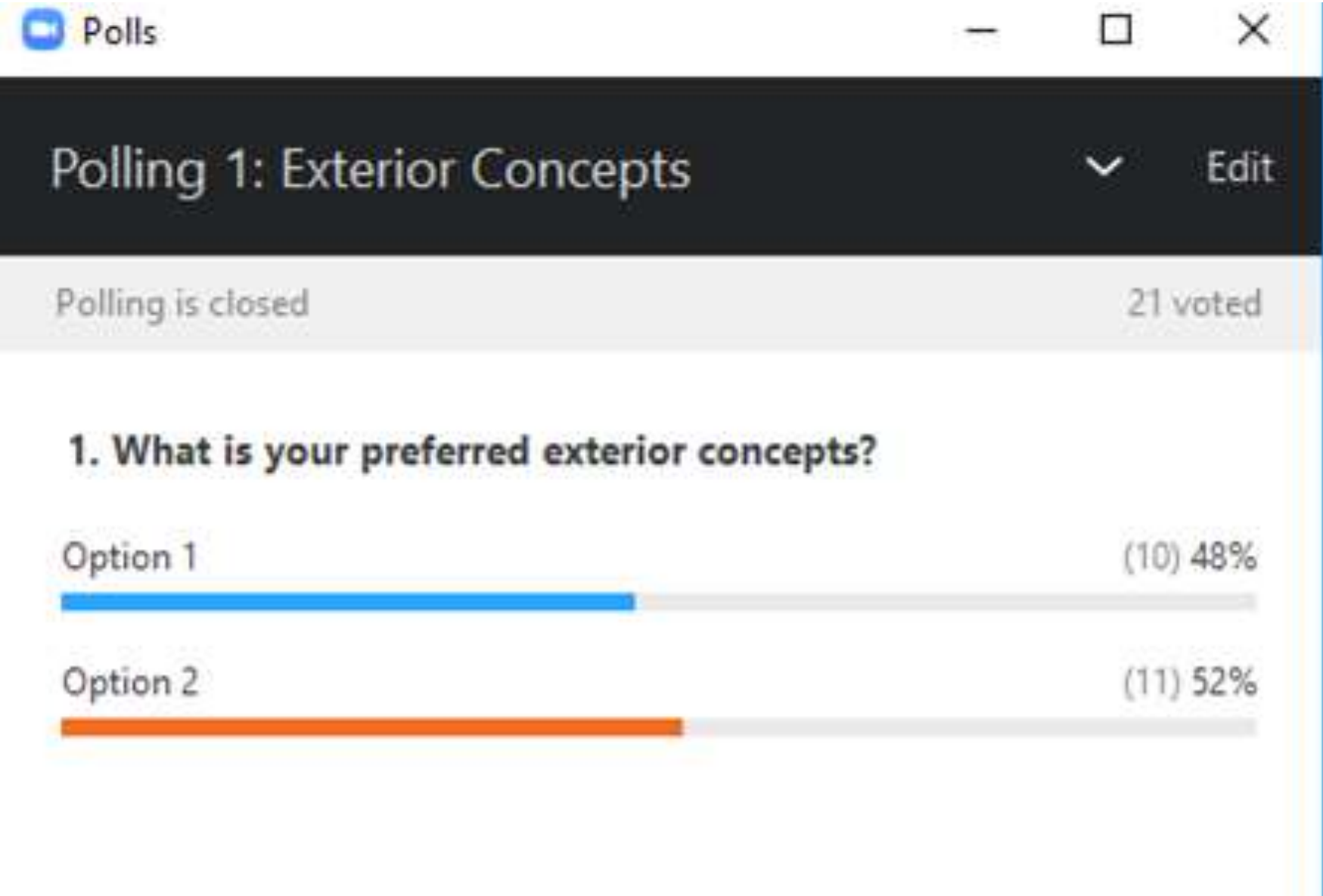
OPTION 1



OPTION 2



PAT#5 RECAP: EXTERIOR DEVELOPMENT



PAT#5 RECAP: EXTERIOR DEVELOPMENT

OPTION 1



**GROUP WAS MIXED ON THE
OUTDOOR AREA ROOF CONCEPT**

LIKED THE LARGE FLAT OVERHANG

**GROUP LIKED
LONGER ENTRY OF
OPTION 1**

PROS:

- **LIKE THE CLEAN LINES OF THE FLAT ROOFS**
- **HIGHER ROOF LINES IN THE CENTER PREFERRED**
- **MORE GLASS AND NATURAL LIGHT INTO MAIN CORRIDOR/ LIBRARY A PLUS**
- **LIKE THE SCALE OF THE LIBRARY AREA**
- **LIKE THE ENTRY EXTENDED OUT**

CONS:

- **ALL FLAT ROOFS COULD MAKE IT LOOK LIKE A BUSINESS AND LESS LIKE A SCHOOL**
- **DON'T LIKE FLAT ROOF OF THE BASKETBALL COURT**

PAT#5 RECAP: EXTERIOR DEVELOPMENT

OPTION 2



PROS:

- GABLES FIT NICER WITH THE NEIGHBORHOOD
- GABLES MAKE IT LOOK MORE LIKE A SCHOOL

CONS:

- ROOF LINES TOO BROKEN UP IN THE CENTER
- ENTRY IS PUSHED BACK FARTHER THAN OPTION 1
- LESS NATURAL LIGHT INTO THE LIBRARY/ MAIN CORRIDOR

EXTERIOR DEVELOPMENT: COMBINATION OF PAT#5 OPTION 1 & 2

OPTION 1



OPTION 2



EXTERIOR DEVELOPMENT: ADDITIONAL DEVELOPMENT BASED ON PAT FEEDBACK

OPTION A



EXTERIOR DEVELOPMENT: ADDITIONAL DEVELOPMENT BASED ON PAT FEEDBACK

OPTION B



EXTERIOR DEVELOPMENT: ADDITIONAL OPTIONS BASED ON PAT FEEDBACK

OPTION A



EXTERIOR DEVELOPMENT: ADDITIONAL OPTIONS BASED ON PAT FEEDBACK

OPTION B



EXTERIOR DEVELOPMENT: ADDITIONAL OPTIONS BASED ON PAT FEEDBACK

OPTION A



EXTERIOR DEVELOPMENT: ADDITIONAL OPTIONS BASED ON PAT FEEDBACK

OPTION B



EXTERIOR DEVELOPMENT: MAIN ENTRY FOR BOTH OPTION A AND B



NOTTINGHAM ELEMENTARY SCHOOL

EXTERIOR DEVELOPMENT: MAIN ENTRY FOR BOTH OPTION A AND B



NOTTINGHAM ELEMENTARY SCHOOL

EXTERIOR DEVELOPMENT: MAIN ENTRY FOR BOTH OPTION A AND B



Learning Plaza

INITIAL LAYOUT CONCEPTS

EXTERIOR DEVELOPMENT: LEARNING PLAZA OPTION 1

ORGANIC SHAPES AND PATHS



EXTERIOR DEVELOPMENT: LEARNING PLAZA OPTION 2

RECTILINEAR SHAPES AND PATHS



SMALL GROUP DISCUSSIONS

EXTERIOR DEVELOPMENT DISCUSSION

BREAKOUT GROUPS (remain in zoom)

Group 1 – Jorge/Juan

Group 2 – Phillip / Melissa

Group 3 – Daniel / Brandon

Breakout Group Discussions: (20 minutes total)

Regroup, Discuss, Poll 10 minutes

Exterior Options

PAT DISCUSSION AND FEEDBACK

EXTERIOR DEVELOPMENT: BREAK OUT ROOM RECAP

OPTION A



OPTION B



EXTERIOR DEVELOPMENT:
VOTE ON PREFERRED OPTION

OPTION A



OPTION B



EXTERIOR DEVELOPMENT:
VOTE ON PREFERRED OPTION

OPTION 1



ORGANIC SHAPES AND PATHS

OPTION 2



RECTILINEAR SHAPES AND PATHS

Interior Images Recap

Present Initial Design Concept

Interior Character (✓ and ✗)

Spirit Images 1

20 - Green Check Mark
0 -Red X

3 - Green Check Mark
12 -Red X

Interior Character (3 ✓ and 3 ✗ per person)

01

Warm Organic Natural Materials

02

Bright Open Monochrome

03

Colorful Bright Bold

04

Exposed Materials Bright Colors Modern

NOTTINGHAM ELEMENTARY SCHOOL | Spirit Images 1

Spring Branch PRK

8 - Green Check Mark
5 -Red X

6 - Green Check Mark
4 -Red X



Interior Character (✓ and ✗)

Spirit Images 2

10 - Green Check Mark
(Including 2 hearts)
0 -Red X

4 - Green Check Mark
(including 1 heart)
8 -Red X

Interior Character (3 ✓ and 3 ✗ per person)

05

Active Spaces Bright Colors NextGen Furniture

06

Organic Natural Materials Colorful Glass

07

Bold Eclectic Natural Materials

08

Bright Colors Abundant Daylight Modern

NOTTINGHAM ELEMENTARY SCHOOL | Spirit Images 1

Spring Branch PRK

19 - Green Check Mark
(including 1 heart)
1 -Red X

11 - Green Check Mark
2 -Red X



Organic Natural Materials Colorful Glass

Interior Character (✓ and ✗)


Spirit Images 3

3 - Green Check Mark
10 -Red X

15 - Green Check Mark
0 -Red X


Interior Character (3 ✓ and 3 ✗ per person)

09



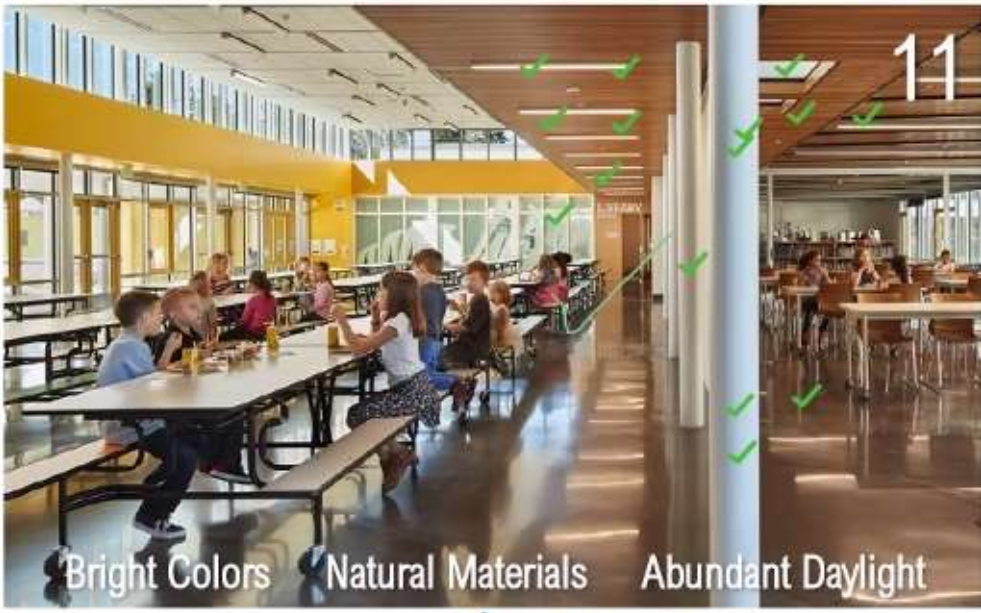
Open Exposed Materials NextGen Furniture

10




Warm Graphics Active Spaces

11



Bright Colors Natural Materials Abundant Daylight

12



Open Monochrome Modern

NOTTINGHAM ELEMENTARY SCHOOL | Spirit Images 1

Spring Branch PRK

8 - Green Check Mark
0 -Red X

7 - Green Check Mark
2 -Red X

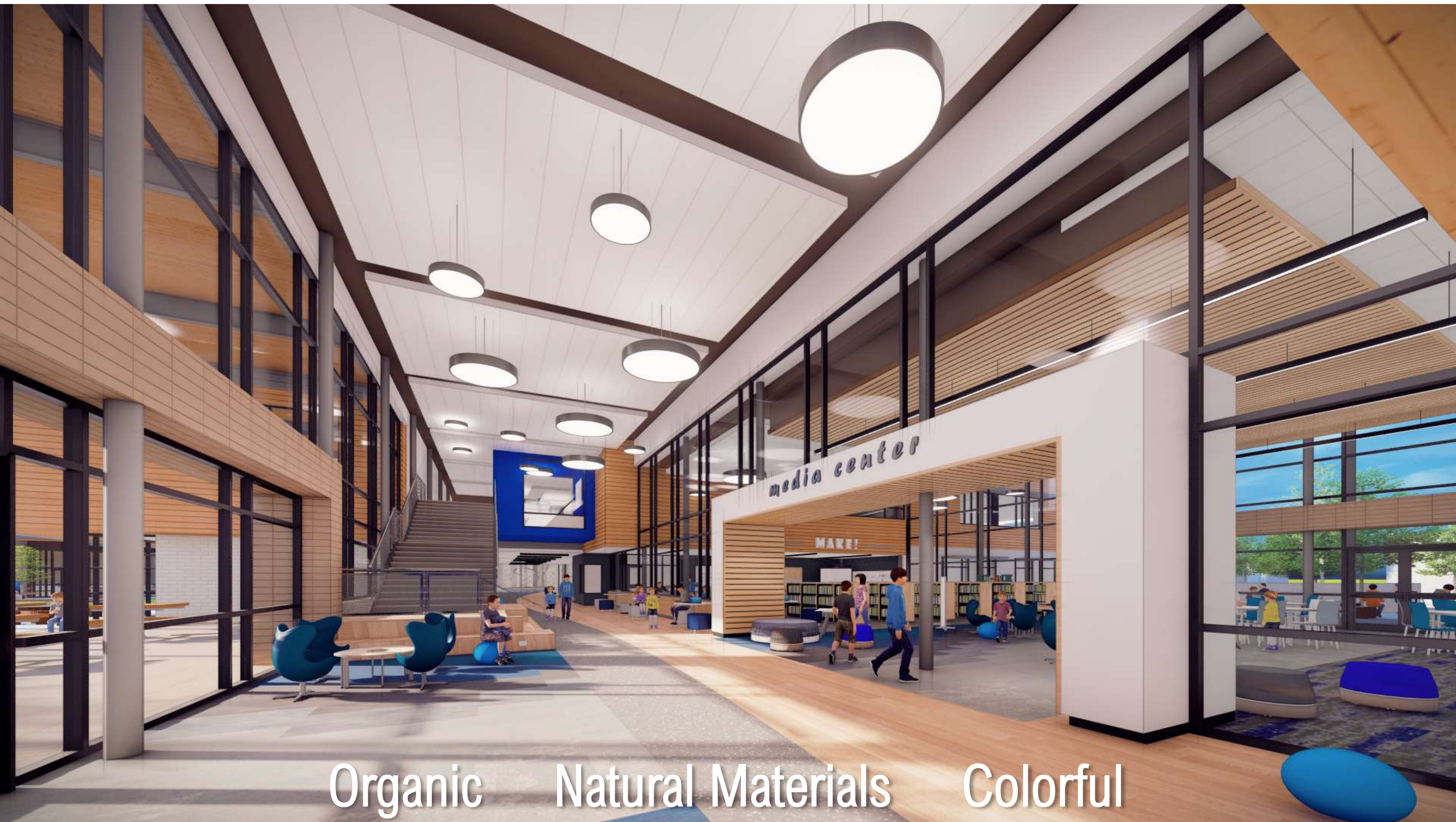


Bright Colors Natural Materials Abundant Daylight

INTERIOR DEVELOPMENT: LIBRARY ENTRY CONCEPT 1



INTERIOR DEVELOPMENT: LIBRARY ENTRY CONCEPT 2



Organic Natural Materials Colorful

INTERIOR DEVELOPMENT: LIBRARY ENTRY CONCEPT 3



INTERIOR DEVELOPMENT: MAIN CORRIDOR CONCEPT 1



Natural Materials

Abundant Daylight

Modern

INTERIOR DEVELOPMENT: MAIN CORRIDOR CONCEPT 2



Organic

Natural Materials

Colorful

INTERIOR DEVELOPMENT: MAIN CORRIDOR CONCEPT 3



Colorful Natural Materials Abundant Daylight Organic

INTERIOR DEVELOPMENT: MAIN CORRIDOR CONCEPT 1



Natural Materials

Abundant Daylight

Modern

INTERIOR DEVELOPMENT: MAIN CORRIDOR CONCEPT 2



Organic Natural Materials Colorful

INTERIOR DEVELOPMENT: MAIN CORRIDOR CONCEPT 3



Colorful Natural Materials Abundant Daylight Organic

INTERIOR DEVELOPMENT: LIBRARY CONCEPT 1



Natural Materials Abundant Daylight Modern

INTERIOR DEVELOPMENT: LIBRARY CONCEPT 2



Organic Natural Materials Colorful

INTERIOR DEVELOPMENT: LIBRARY CONCEPT 3



Colorful Natural Materials Abundant Daylight Organic

SMALL GROUP DISCUSSIONS

INTERIOR DEVELOPMENT DISCUSSION

BREAKOUT GROUPS (remain in zoom)

Group 1 – Jorge/Juan

Group 2 – Phillip / Melissa

Group 3 – Daniel / Brandon

Breakout Group Discussions: (20 minutes total)

Regroup, Discuss 15 minutes

Interior Images discussion recap

INTERIOR DEVELOPMENT: INTERIOR CONCEPTS

Concept 1



Concept 2



Concept 3



INTERIOR DEVELOPMENT: INTERIOR CONCEPTS

Concept 1



Concept 2



Concept 3



INTERIOR DEVELOPMENT: INTERIOR CONCEPTS

Concept 1



Concept 2



Concept 3



COMING UP ON PAT #7...

June 2, 2021 3:30 PM – 5:30 PM

Design Refinement

Building Exterior and Interior

PAT # 7



NEXT STEPS

Closing Remarks

ARE WE HEADING IN THE RIGHT DIRECTION FOR THE NEW NOTTINGHAM DESIGN AFTER PAT #6?

Next PAT meeting

June 2, 2021 3:30 PM – 5:30 PM

Design Refinement

Building Exterior and Interior



Thank you!

Nottingham Elementary School