



**Landrum Middle School**  
Spring Branch ISD



# Landrum MS Replacement SD / DD Recommendation

May 6, 2019

# Table of Contents



**01 Introduction - Project Scope + Schedule**

**02 PAT Engagement - Process Overview**

**03 Recommendation - Landrum MS Replacement**





## Project Scope

- **Replacement of Landrum Middle School**  
1,100 students serving Landrum MS + KIPP
- **On-Site Transition**  
LMS students remain on-campus during new construction
- **New 3-story building, Estimated 234,000 SF**  
Based on SBISD Middle School Educational Specifications
- **Estimated 2-year construction sequence**  
Phase 1 – Build new LMS on campus, North of existing Building  
Phase 2 – Campus moves into new building + Demolition of Existing + Complete remaining site work (parking, fields, etc)



## Project Schedule



### ➤ **Schematic Design Phase** January - March 2019

- *PAT Meeting #1: January 15, 2019*
- *PAT Meeting #2: January 28, 2019*
- *PAT Meeting #3: February 19, 2019*



### ➤ **Design Development Phase** March - May 2019

- *PAT Meeting #4: March 19, 2019*
- *PAT Meeting #5: April 23, 2019*



**PRESENT TO SBISD ADMIN (5/2) + SBISD BOARD (5/6)**

### ➤ **Construction Documents** May – August 2019

### ➤ **Procurement & Permitting** Sept- Nov 2019

- Board GMP Approval: November 2019

### ➤ **Construction Administration** Dec 2019-Fall 2021

- **Phase I Construction:** Dec 2019 - May 2021
- **New Building Move In:** June 2021
- **Phase II Construction:** June – Fall 2021

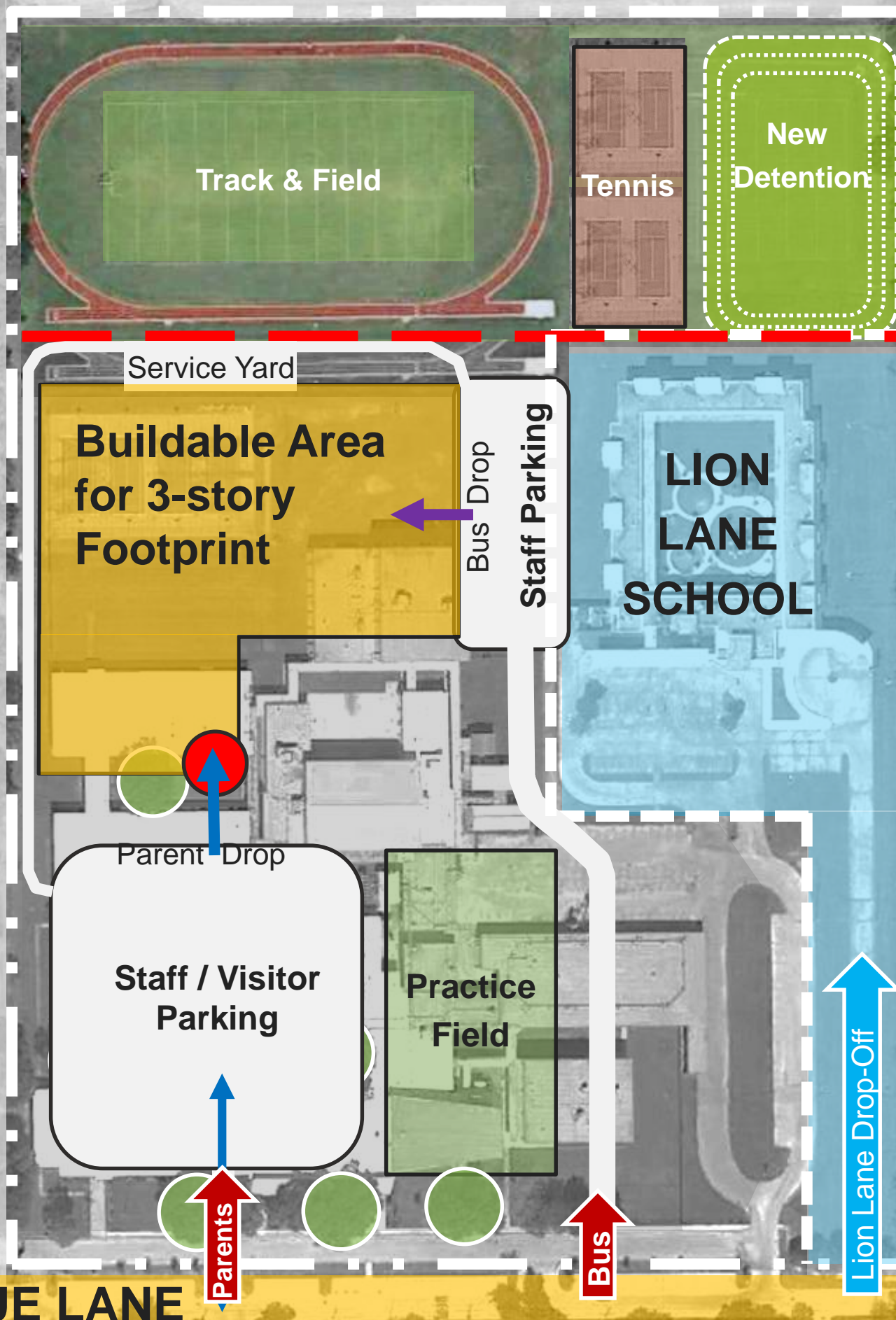




**Conceptual Study Recap: Landrum MS Site + Adjacent Properties**



1. Detention
2. Tennis Courts
3. Track & Field
4. Lion Lane School
5. Demo 400-Wing Demo Gym
6. Buildable Area for 3-Story Footprint
7. New Front Door
8. New Staff Parking
9. Demo Exist Bldg.
10. Preserve Trees
11. New Drives
12. New Parking
13. Track & Field
14. Tennis Sport Court
15. Practice Field



# Table of Contents

01 Introduction - Project Scope + Schedule



02 PAT Engagement - Process Overview

03 Recommendation - Landrum MS Replacement

# Project Advisory Team (PAT)

**20 Participants**



**Over 80%  
Participation Rate**

Principal
Assistant Principal
CIT
CIT
CIT
CIT
CIT
CIT
CIT
CIT
CIT
PTA President
Parent by Lottery
Parent by Lottery
Staff by Lottery
Staff by Lottery
Student by Lottery
Student by Lottery
HOA Representative
HOA Representative
Business Representative

## **PAT Committee Composition**

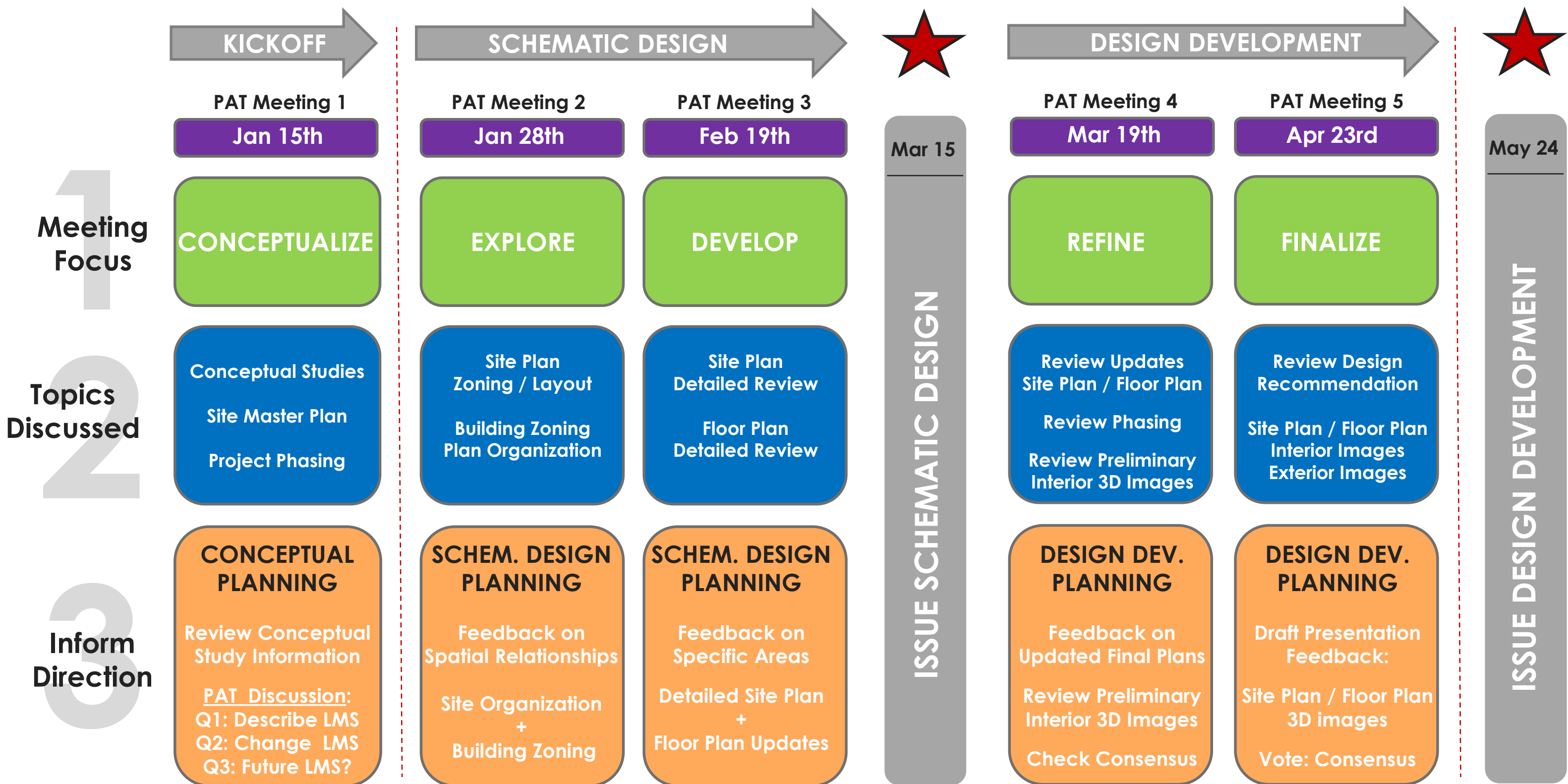
**11 = Landrum MS**  
Staff + CIT + PTA President

**06 = Lottery**  
Parent + Staff + Students

**03 = Community**  
HOA + Business



# PAT Engagement: Schedule + Meeting Overview

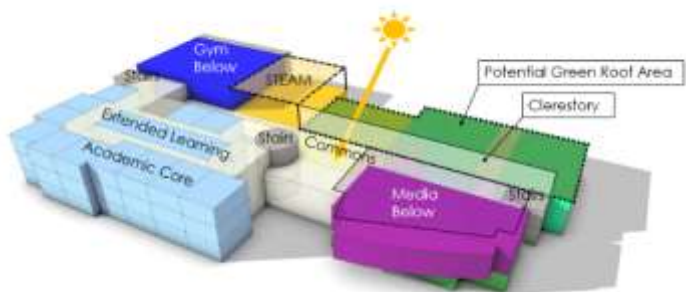
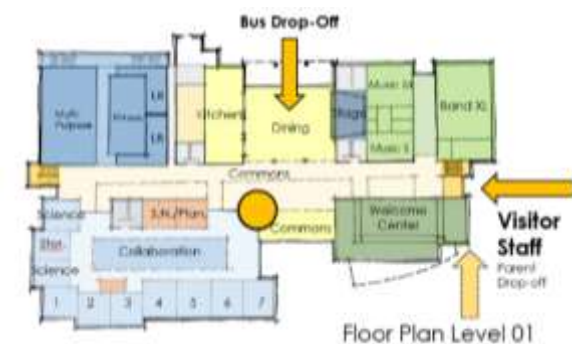


# PAT Engagement: Process Overview

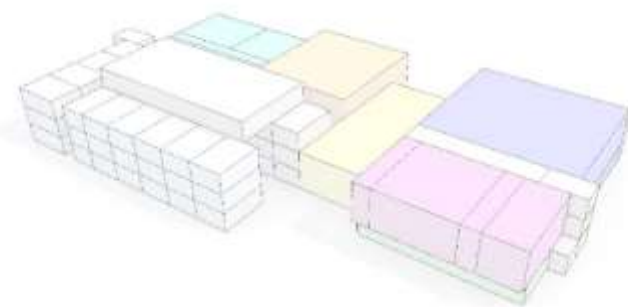
## CONCEPTUALIZE



## EXPLORE



## DEVELOP



## REFINE



Conceptual  
Planning

(Sept – Dec 2018)



PAT Meetings

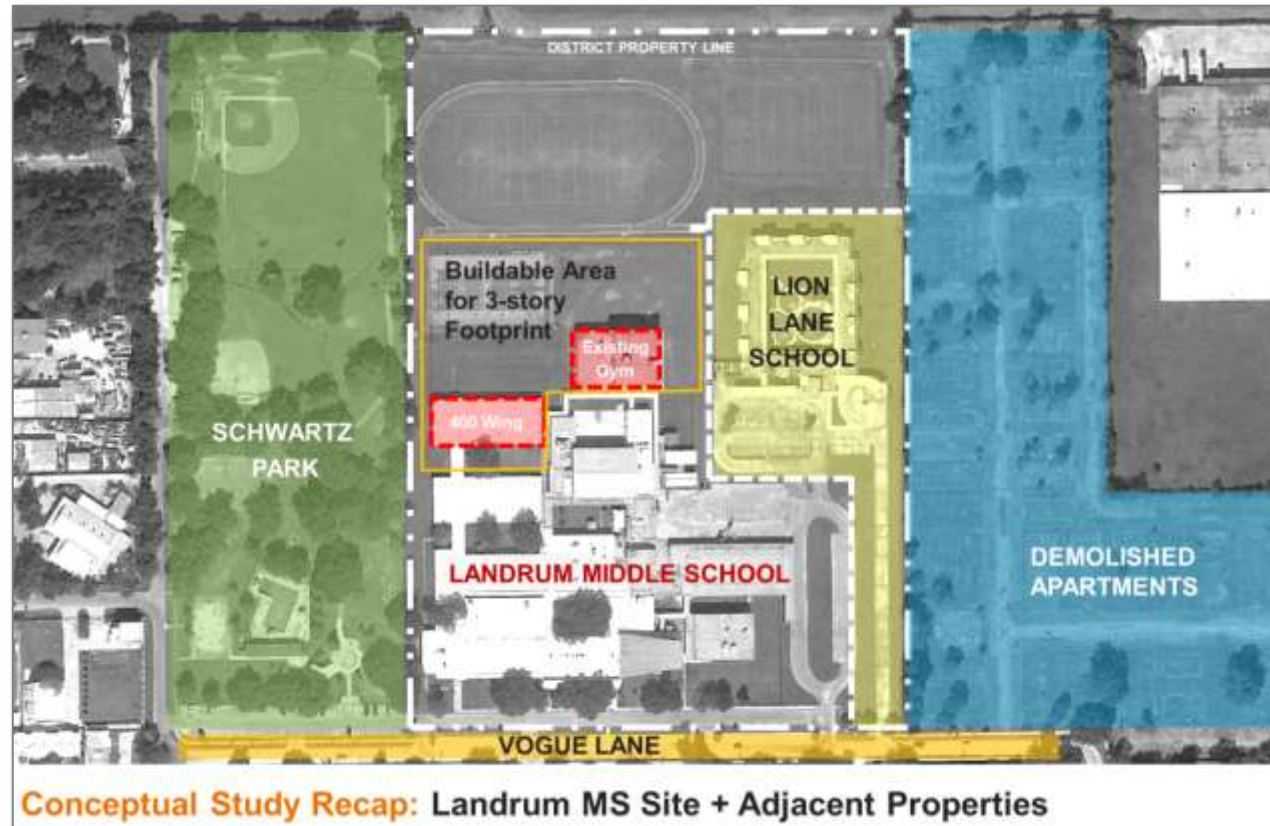
(January – March 2019)



PAT Consensus  
(April 2019)

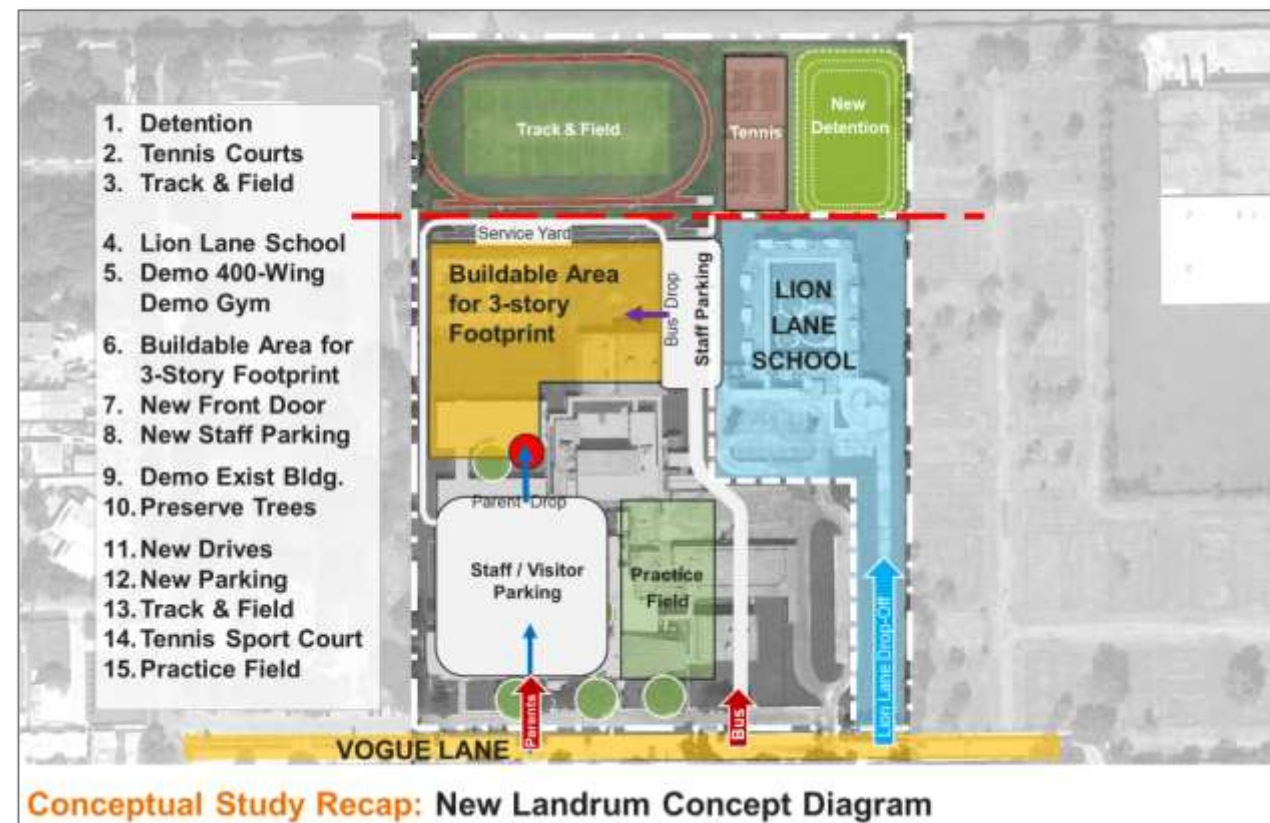


# CONCEPTUAL PLANNING

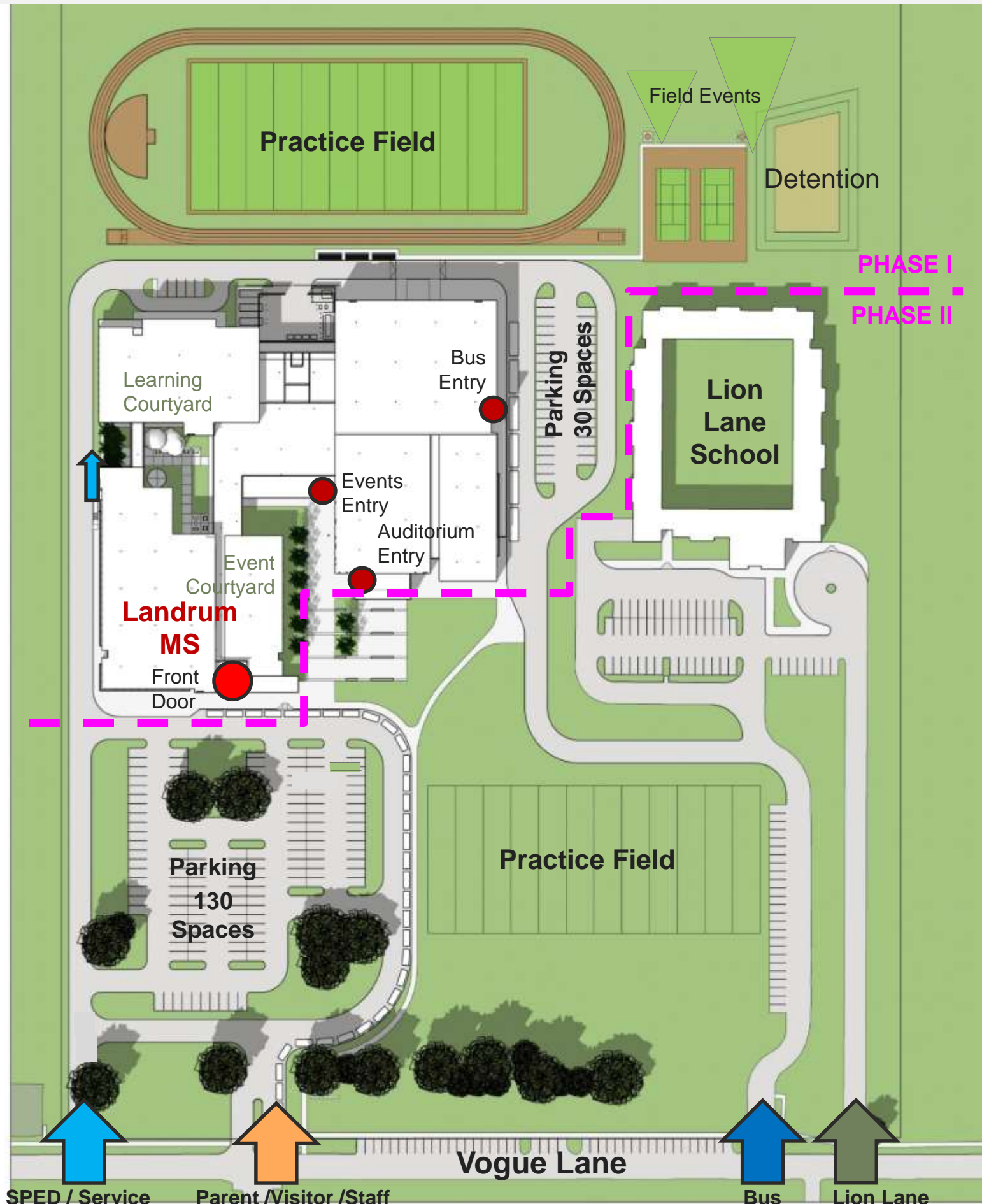


## Conceptual Plan Development

- **Fall 2018 Conceptual Planning Meetings** prior to convening LMS Project Advisory Team
- **Goal = Review design options** to keep LMS students on-site during construction
- **Determined On-Site Transition was achievable** with a 3-story design adjacent to existing LMS
- **Conceptual Plan = “Starting Point” for PAT**



# SITE PLANNING

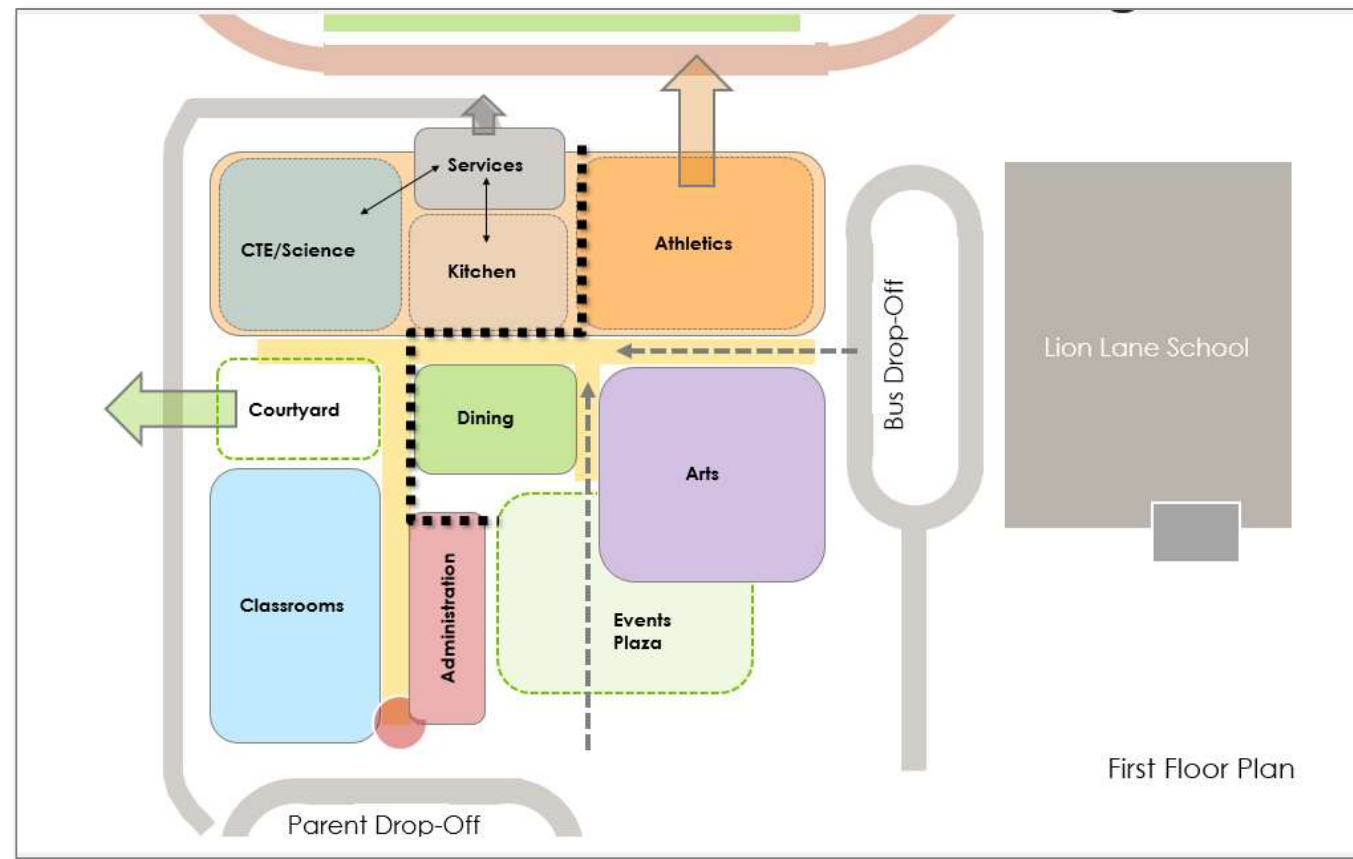


## Site Plan Development

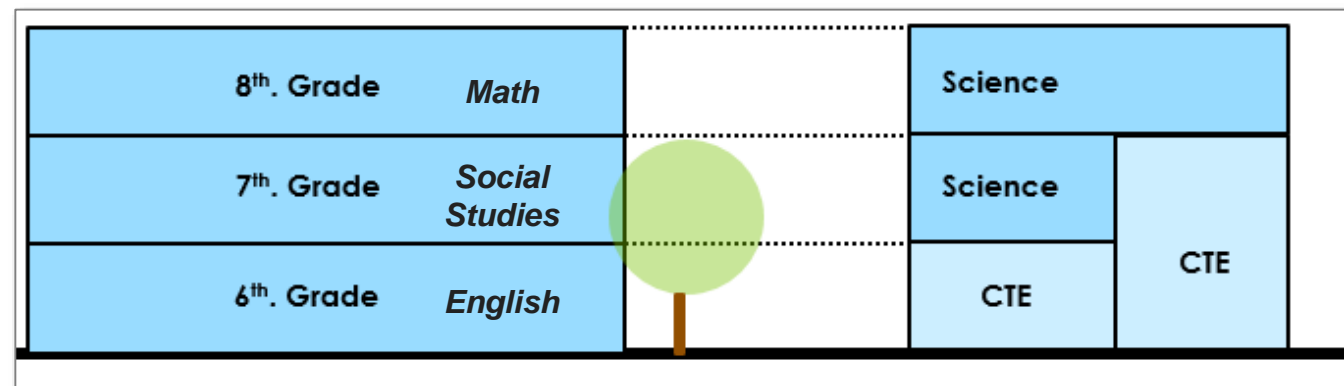
- **Building Placement**  
On-Site Transition  
Build Adjacent → Occupy New → Complete Site
- **Traffic Flow**  
Parent Drop-off / Visitor  
SPED Drop-off  
Bus Drop-off  
Staff Parking  
Service Drive / Fire Lane  
Lion Lane PK
- **Sense of Arrival**  
Main Entry  
Events Entry  
Auditorium Entry  
Bus Drop-off Entry
- **Outdoor Connections / Courtyards**  
Events Courtyard  
Learning Courtyard
- **Construction Phasing**  
Phase I – Partial Demo + New Construction  
Phase II – Demo Existing + Complete Site



# BUILDING ORGANIZATION



Concept Plan  
(Bldg. Organization)



3-story Concept Section  
(Department or Grade Level)

## Building Layout / Plan Development

### ○ **Spatial Organization / Adjacencies**

Administration  
Learning Spaces + Science + CTE  
Media Center  
Dining Commons  
Visual + Performing Arts  
PE/Athletics + Gyms

### ○ **Vertical Organization / Zoning**

Grade Level <or> Departmental Level

### ○ **Multi-use Spaces / Flexibility**

### ○ **CTE Program**

Plan for Future Flexibility

### ○ **Courtyards**

Social + Learning

### ○ **Security Zones / After Hours Uses**

PE/Athletics (FL1) + Gyms (FL2)

Auditorium, Performing + Fine Arts

Dining Commons

# TEACHING AND LEARNING

## Learning Beyond the Classroom

- Facilitate Variety of Teaching Methods
- Support Personalized Learning
- Extended Classroom / Flex Spaces
- Easy to Adapt for Future (LMS / KIPP)
- Learning Environment Choices (Individual/ Group)
- Technology Rich / Interactive Environment
- Flexible / Mobile Furniture
- Acoustic Separation between Uses

Direct Instruction



Outdoor Learning



Collaboration / Flex





# SCHOOL EXPRESSION

## Existing School Expression

- School Motto / Lion Pride:  
“**L**ions **I**nspire **O**thers to **N**ever **S**ettle”
- Connections - Indoor / Outdoor
- Art - Murals + Mosaics
- Lifelong Learning Legacy - H.M. Landrum

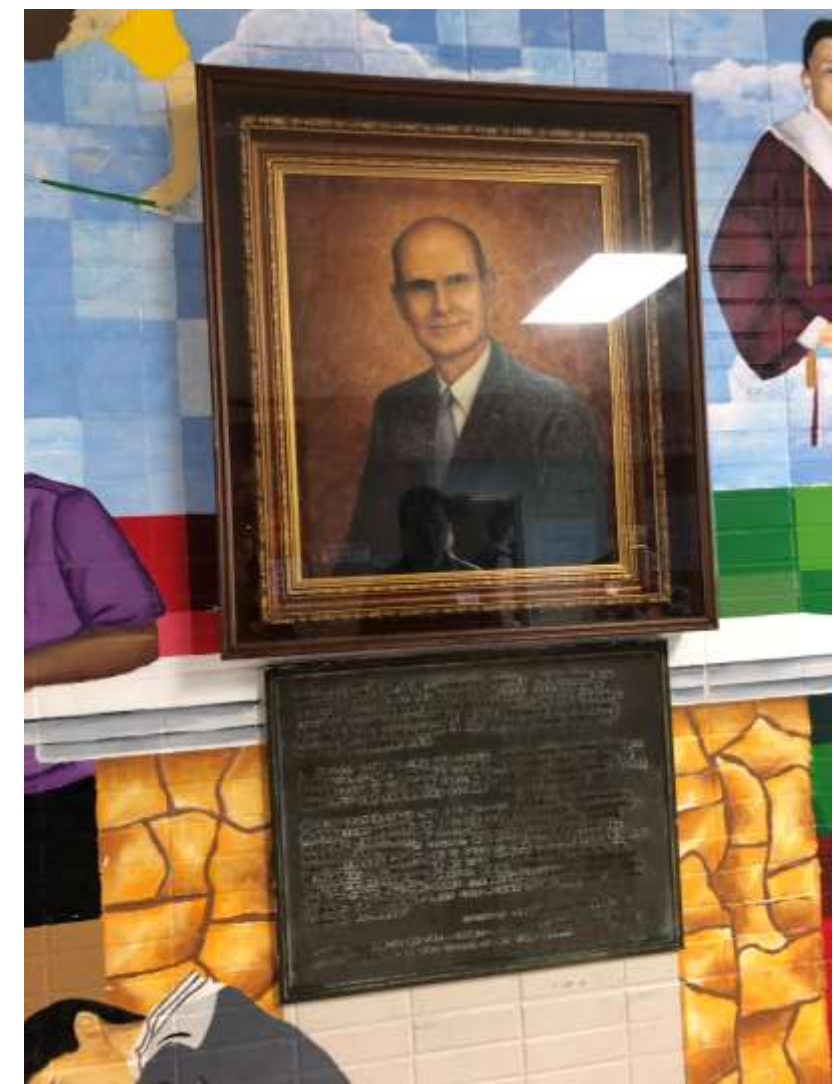
Lion Pride



Outdoor Learning



H.M. Landrum + 1957 LMS



## Future School Expression

- School Identity + Branding = **PRIDE**
- Sense of Place = **Desired Destination**
- Flexible/Adaptable = **Future Changes**
- Architectural Expression = **Modern Design, Courtyards, Preserve Trees, Exterior Views**

# Table of Contents

01 Introduction - Project Scope + Schedule

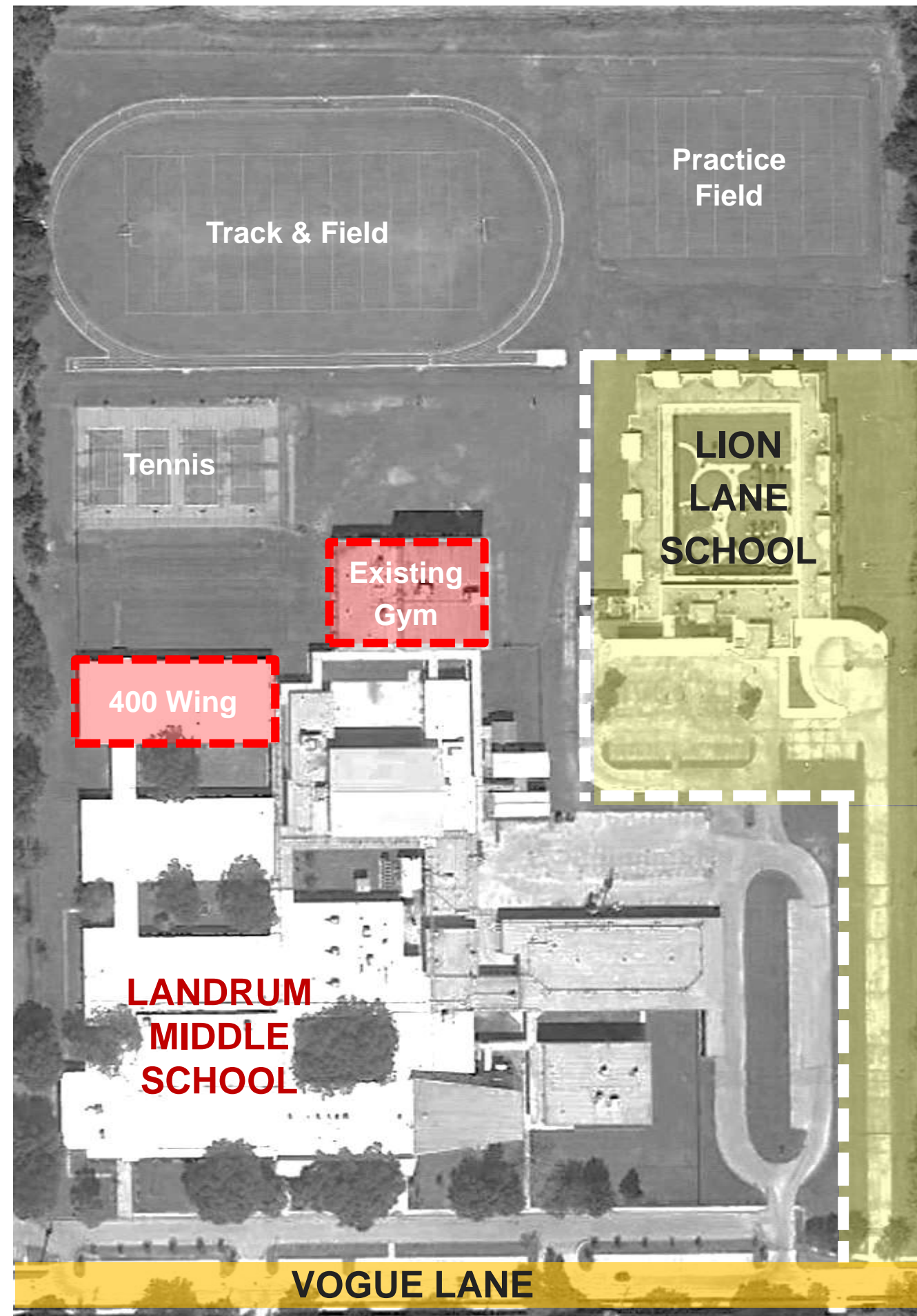
02 PAT Engagement - Process Overview



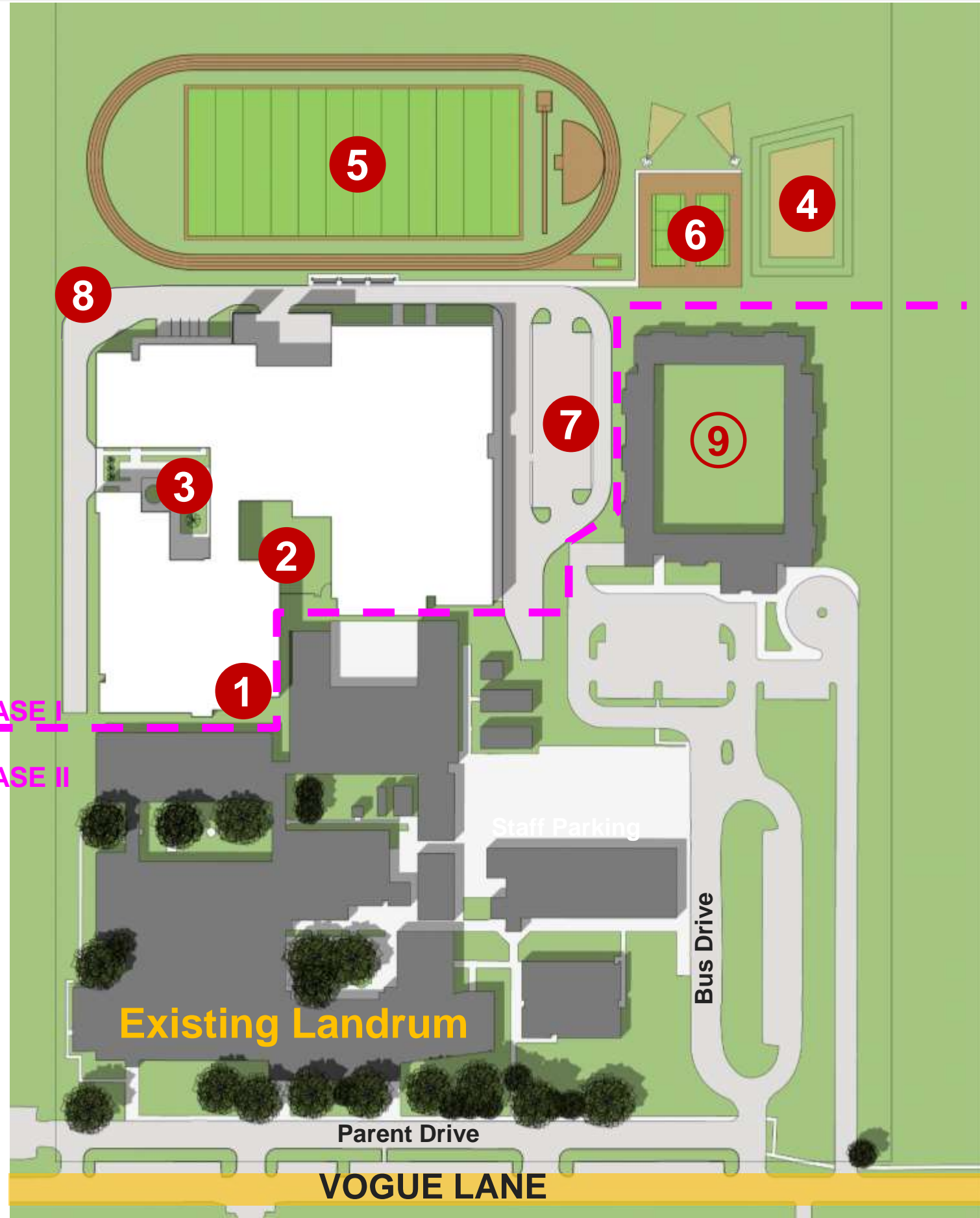
03 Recommendation - Landrum MS Replacement



# SITE PLAN - EXISTING



# SITE PLAN – PHASE I



## Phase I Construction

- ① New Landrum MS Building
- ② Events Courtyard / Entry
- ③ Learning Courtyard
- ④ Storm Detention
- ⑤ New Track / Field
- ⑥ New Multi-Sport Courts
- ⑦ Bus Drop Off / Staff Parking
- ⑧ Service Drive / Fire Lane
- ⑨ Lion Lane School

PHASE I

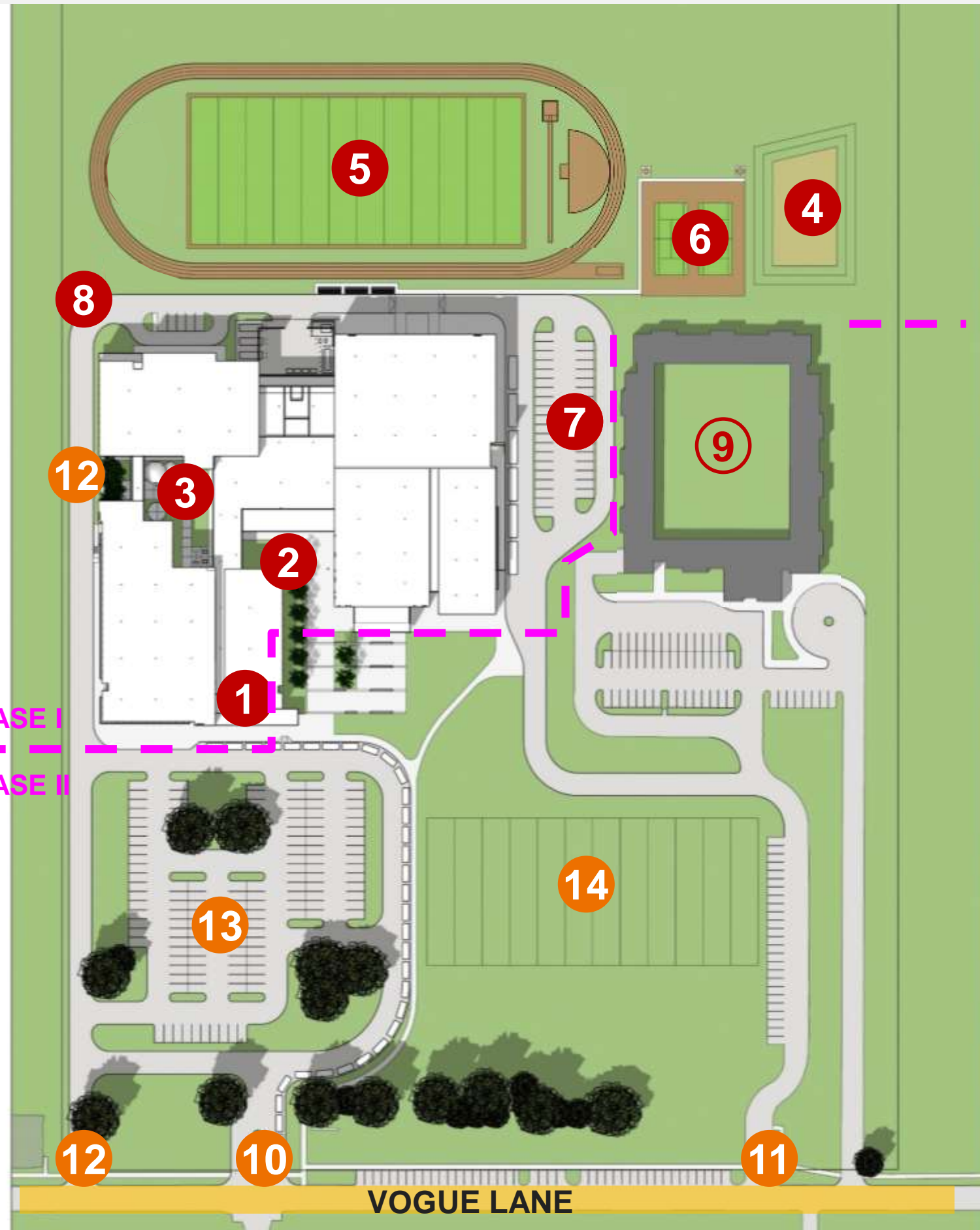
## Existing Landrum MS

*Remain Operational During Construction*

- Middle School
- Parent Drive
- Bus Drive
- Staff Parking



# SITE PLAN – PHASE II



## Phase I Construction

- ① New LMS Main Entry
- ② Events Courtyard / Entry
- ③ Learning Courtyard
- ④ Storm Detention
- ⑤ New Track / Field
- ⑥ New Multi-Sport Courts
- ⑦ Bus Drop Off / Staff Parking
- ⑧ Service Drive / Fire Lane
- ⑨ Lion Lane School

## Phase II Construction

- ⑩ Vehicle Entry – Parent/Visitor + Staff
- ⑪ Bus Drive Entry
- ⑫ SPED Bus Drive + Drop Off
- ⑬ Visitor / Staff Parking
- ⑭ Practice Field





# FLOOR PLAN LEVEL 1

- Administration
- Media Center
- Curriculum
- Collaboration/Flex Space
- Dining Commons
- PE/Athletics
- Fine Arts
- Building Support
- Circulation





# FLOOR PLAN LEVEL 2

- Administration
- Media Center
- Curriculum
- Collaboration/Flex Space
- Dining Commons
- PE/Athletics
- Fine Arts
- Building Support
- Circulation

**LMS Science**

**Learning Community (12)**

**LMS Science**

**Learning  
Courtyard**

Open to  
Below

**Flex**

**Flex**

Open to  
Below

**Flex**

# FLOOR PLAN LEVEL 3

- Administration
- Media Center
- Curriculum
- Collaboration/Flex Space
- Dining Commons
- PE/Athletics
- Fine Arts
- Building Support
- Circulation





## Entry/Administration

- Entry Vestibule / Lobby
- LMS History / Future
- Seating & Display
- Views to Library
- Views to Courtyard Beyond

## Library / Media

- Flexible Furniture Groupings
- Technology / Broadcast
- Visual Connection to Learning Communities
- Views / Access to Learning Courtyard
- Collaboration / Flex Space





## MAIN ENTRY / VESTIBULE

- Entry Vestibule
- Reception to Admin







## RECEPTION: LMS + KIPP

- Landrum Reception
- KIPP Reception







## MAIN ENTRY / CORRIDOR

- Entry Space (History / Future)
- View to Media Center







## MAIN ENTRY / CORRIDOR

- Entry Space (History / Future)
- View to Media Center







## MEDIA CENTER

- Flexible Furniture
- Group Size Variety
- Study + Collaborate







## MEDIA CENTER

- Presentation Wall
- Dynamic Display







## MEDIA CENTER

- Presentation Wall
- Dynamic Display







## FLEX SPACE / CLASSROOMS

- Individual Study
- Group Work
- Collaboration







## Instructional Spaces

- CTE Shops + Classrooms
- Special Education
- Collaboration / Flex Space
- Connection between Science / Learning Comm.

## Commons / Courtyard

- Dining Commons
- Learning Stair
- Views / Access to Events Courtyard
- Views / Access to Learning Courtyard
- Connection to Auditorium





## FLEX / CTE + SCIENCE

- Socialize
- Collaborate
- Demonstrate





## FLEX / CTE + SCIENCE

- Socialize
- Collaborate
- Demonstrate







## SCIENCE FLEX / BRIDGE

- Socialize
- Collaborate
- Demonstrate







## LEARNING STAIR

- Group Presentation
- Commons / Social
- Courtyard View







## DINING COMMONS

- Group Presentation
- Commons / Social
- Courtyard View

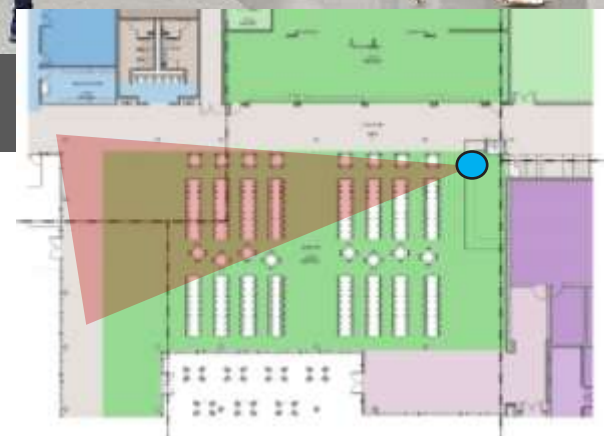






## DINING COMMONS

- Group Presentation
- Commons / Social
- Courtyard View







## AUDITORIUM ENTRY

- Front Entry Lobby
- Access to Seating
- Access to Restrooms







## AUDITORIUM INTERIOR

- Stage / Presentation
- Side Viewing Platform
- 600 Seat Auditorium







ENTRY DRIVE - VOGUE LANE





ENTRY APPROACH – PARENT DRIVE





**LANDRUM MS MAIN ENTRY**





EVENTS ENTRY + COURTYARD





EVENTS COURTYARD





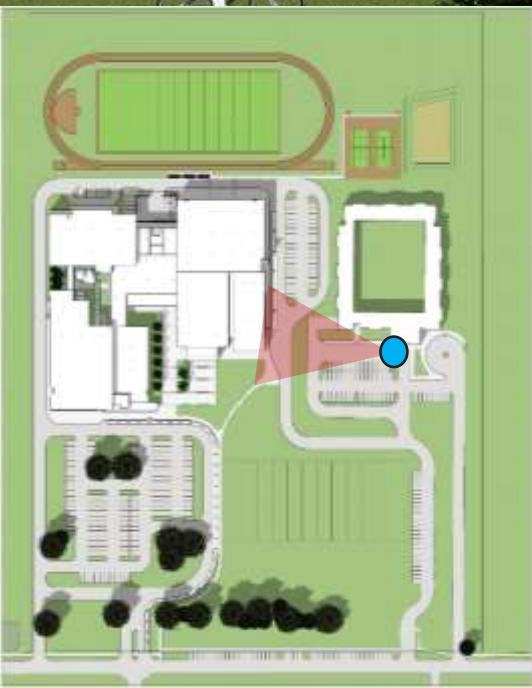
**WEST ELEVATION / SERVICE DRIVE**





LEARNING COURTYARD





EAST ELEVATION / BUS DROP-OFF



