



# Memorial Drive Elementary

Project Advisory Team  
Meeting #7  
June 14, 2022





# Introductions

## SPRING BRANCH ISD

Thayer Hutcheson	Memorial Drive Elementary, Principal
Travis Stanford	Associate Superintendent for Operations
Max Buja	Planning & Construction, Director
David Valerius	Planning & Construction, Project Manager
Noel Moreno	Planning & Construction, Project Manager

## STANTEC ARCHITECTURE

Jennifer Henrikson	Architect - Principal
Tracy Eich	Architect - Senior Design Principal
Gary Dunn	Architect - Senior Project Manager
Gin Kappler-Peeler	Architect - Senior Project Manager
Gretchen Diesel	Interior Designer - Senior Interior Designer



# Agenda

1. PAT Process: Project/Process Status Update
2. PAT Mtg #6: **Recap Select Items → PAT Mtg #7**  
MDE Guiding Principles | PAT Mtg 2/3 Consensus  
MDE Design Principles | PAT Mtg 4/5 Consensus  
Exterior Images | “Where we were” last meeting
3. PAT Mtg #7: **Exterior Design Updates**  
Design Progress | PAT Feedback → Updates  
Focus on Front Street View  
**PAT Engagement: Seek Consensus**  
a) Front Entry Options  
b) Brick Color Options
4. PAT Mtg #7: **Seek PAT Final Consensus**  
\* **Individual Vote:** SD/DD Recommendation  
\* **Next Step:** Presentation to SBISD Board







# Item 1

## **PAT PROCESS OVERVIEW** Project / Process Status Update





# PAT Engagement – Project Advisory Team (PAT) Charge

## OVERVIEW

A Project Advisory Team (PAT) will be chartered for the planning of a replacement for **Memorial Drive Elementary School** under the school's project in the 2017 Bond Program.

## CHARGE

The PAT will work collaboratively and cooperatively with the architect and SBISD Project Manager **to conceptualize, develop and refine the project's goals and design.**

**The PAT will advise on recommendations regarding the interior and exterior appearance** of the replacement of Memorial Drive Elementary School.

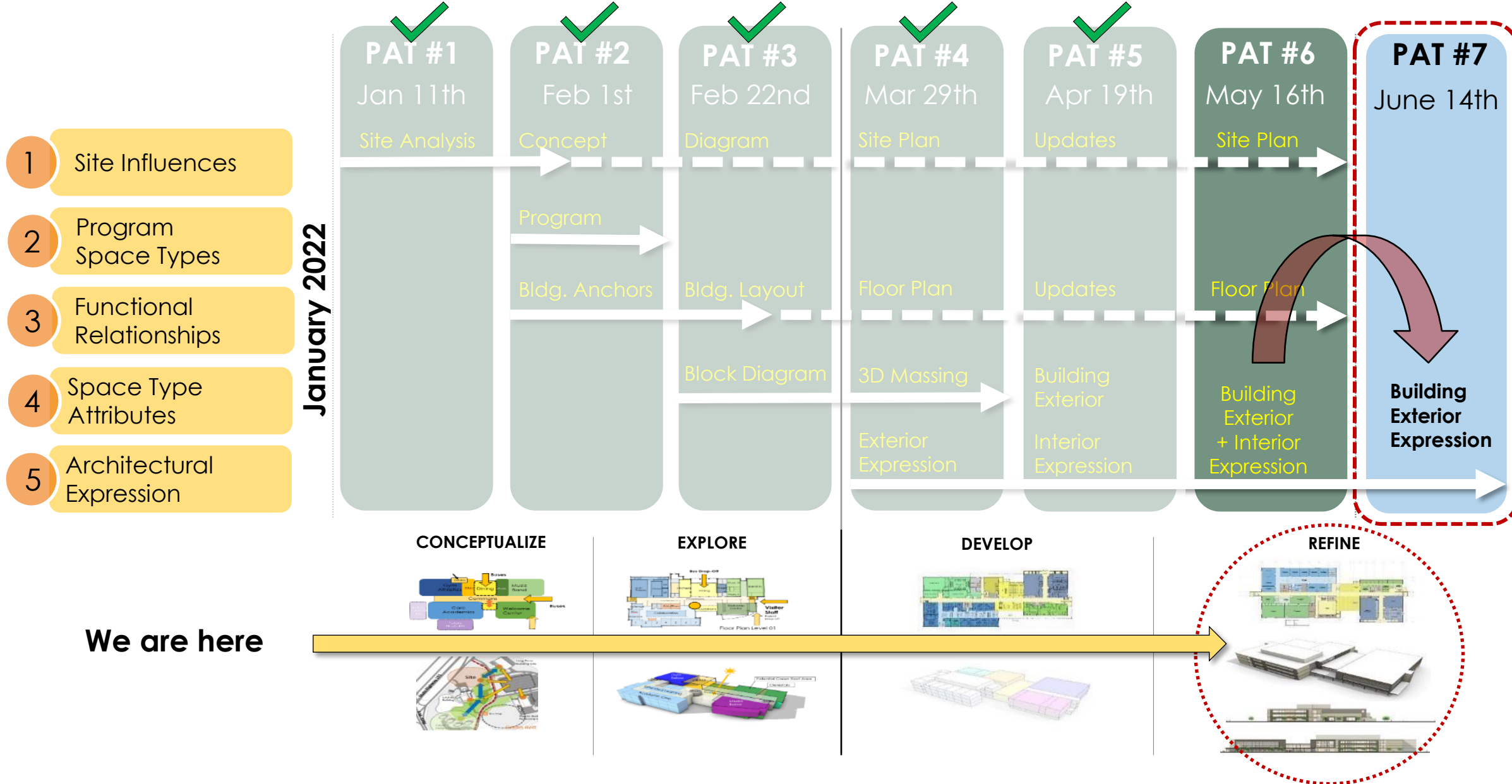
**The PAT will reach a proposed recommendation through consensus.**

**These recommendations will be presented to the Superintendent + Board of Trustees for approval.**  
*The Board of Trustees may act upon the recommendations developed with PAT input by approving, amending, altering or not approving all or any part of the recommendations.*

**Areas of focus from which the PAT should refrain include** recommendations regarding school programs, policies and procedures, boundaries of district facilities, instructional arrangements and/or educational pedagogy decided upon and/or subject to District, State and Federal laws.



# PAT Engagement – Process Overview | Status Update





# Item 2

**PAT MEETING #7**  
**Exterior Expression**  
RECAP – Where we were





# Reminder: PAT Mtg#2/3 Consensus → MDE Guiding Principles

## **Engage the Intimate Natural Setting**

Maintain the small neighborhood school character that engages the natural setting with views and access to outdoor areas.

## **Celebrate our MDE Community**

Support and promote a caring close-knit family environment that fosters connection among students, staff, and parents during and after school.

## **Perpetuate Our Traditions**

Keep the qualities of tradition, community and family in the new design with active hands-on teaching and learning spaces indoor and outdoor.

## **Demonstrate Our Values**

Focus on building student character and promoting the development of the individual as a future citizen.





## Reminder: PAT Mtg#4/5 Consensus → MDE Design Principles

1. Shaded by mature oak and pine trees,  
the new Memorial Drive ES **blends into the landscape.**
2. The **balanced geometric forms** are expressed through a  
limited range of **natural materials** in a **neutral palette.**
3. The **horizontal composition** and large windows with  
**ample views** into the school **create a welcoming invitation**  
to the neighborhood students, staff and community.
4. The **informal plan in the central courtyard** reflects  
**natural patterns** that **complement the wooded setting.**
5. With **clean and simple lines**, the **multi-dimensional** design  
feels **open, airy and light.**





# PAT Mtg#6 RECAP: Exterior Design Progress | View From Street

MEMORIAL DRIVE ELEMENTARY SCHOOL



## PAT Feedback Influenced the Exterior Design

- **Trees as the Feature / Allow to Shine** (Scale)
- **Horizontal Composition Better Fits this Environment** (Scale)
- **Natural Colors Feel Clean and Simple** (Shape)

**Blends into the Landscape**





# PAT Mtg#6 RECAP: Exterior Design Progress | Front Entry

MEMORIAL DRIVE ELEMENTARY SCHOOL



## PAT Feedback Influenced the Exterior Design

- **Limited Mixture of Materials, Blend with Landscape** (Materiality)
- **High Areas of Informal Entry** (Composition)
- **Simple with Bold Entry** (Shape)

**Balanced Geometric Forms**  
**Horizontal Composition**





# PAT Mtg#6 RECAP: PAT Engagement | Entry Plaza

MEMORIAL DRIVE ELEMENTARY SCHOOL



**Clean Simple Lines  
Natural Material Palette**





# PAT Mtg#6 Engagement RECAP: Brick Color Palette Input

PAT Handout

Select YOUR Preferred Option

MEMORIAL DRIVE ELEMENTARY SCHOOL

Natural Materials & Neutral Tones | **Lighter Color Palette** | **OPTION A:**



**Lighter than Option A + Other Brick Color Options?**



Natural Materials & Neutral Tones | **Darker Color Palette** | **OPTION B:**





# PAT Mtg#6 Engagement RECAP: Library Design Options

PAT Handout

Select YOUR Preferred Option

OPTION A



Curtainwall Glass

OPTION B



Curtainwall Glass + Horizontal Screen

OPTION C



Curtainwall Glass + Horizontal Screen  
+ Vertical Columns



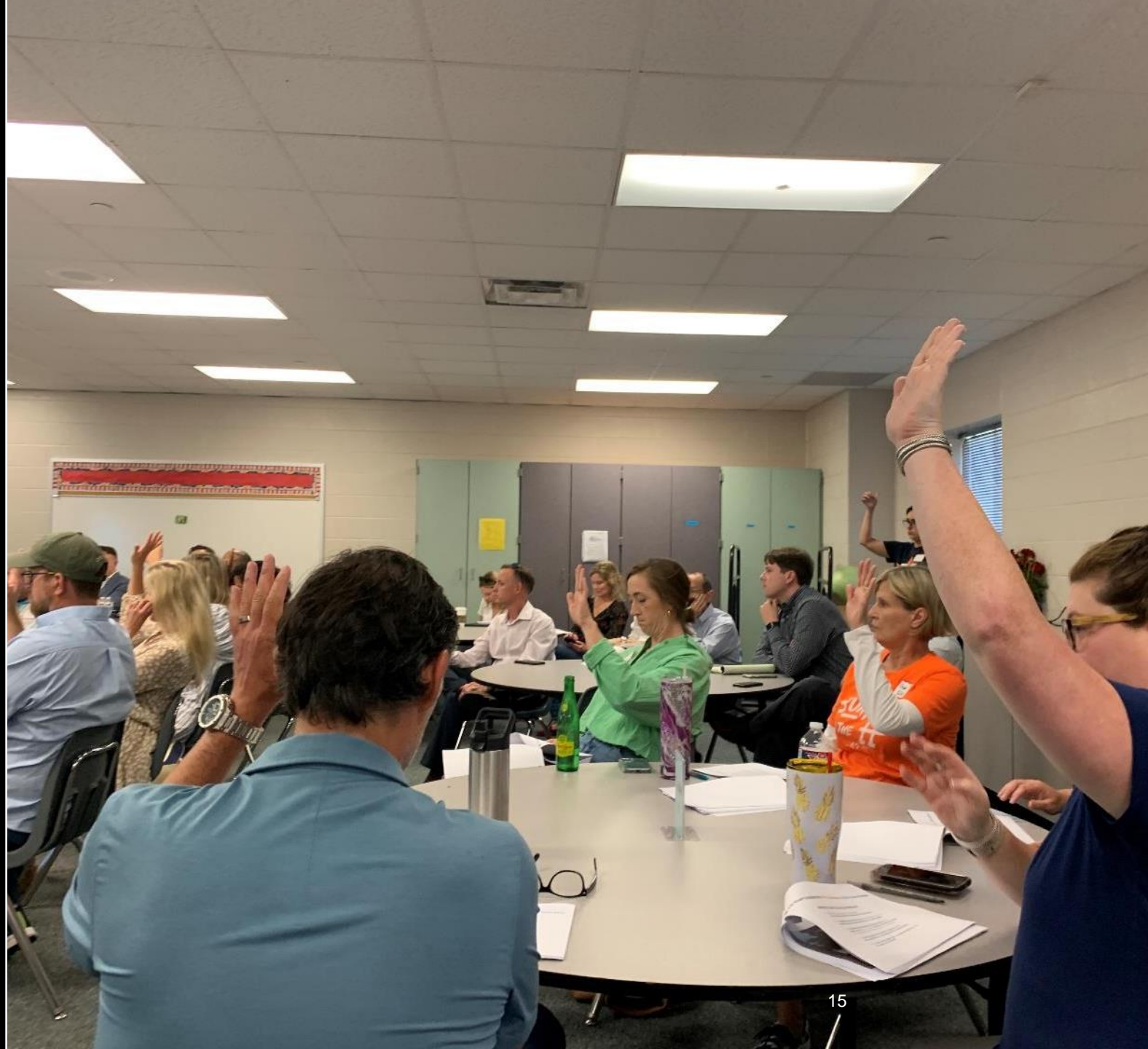
**+ Update Window / Screen**





# Item 3

**PAT MEETING #7**  
**Exterior Design Updates**  
PAT Feedback + Updates





# PAT Mtg#7: Exterior Development



## PAT Feedback & Design Options

### PAT Meeting #6 Feedback

- Entry appears dark - Building feels muddy + Lacks contrast
- Somewhat heavy feeling under entry canopy - Deep shadows
- Needs to be light and bright - More prominent entry
- Option for a more vertical expression for primary entry
- Feels boxy, options for roof shapes at both the library and entry





# PAT Mtg#7: Exterior Development



# PAT Feedback & Design Options

## PAT Meeting #6 Feedback

- Entry appears dark - Building feels muddy + Lacks contrast
- Somewhat heavy feeling under entry canopy - Deep shadows
- Needs to be light and bright - More prominent entry
- Option for a more vertical expression for primary entry
- Feels boxy, options for roof shapes at both the library and entry

1

## Design Options at Entry

- Lighten entry canopy
- Give entry greater definition
- Explore more of a vertical expression for entry
- Explore a more dramatic shape for the roof line



# PAT Mtg#7: Exterior Development



# PAT Feedback & Design Options

## PAT Meeting #6 Feedback

- Entry appears dark - Building feels muddy + Lacks contrast
- Somewhat heavy feeling under entry canopy - Deep shadows
- Needs to be light and bright - More prominent entry
- Option for a more vertical expression for primary entry
- Feels boxy, options for roof shapes at both the library and entry

1

## Design Options at Entry

- Lighten entry canopy
- Give entry greater definition
- Explore more of a vertical expression for entry
- Explore a more dramatic shape for the roof line

2

## Design Update for Library

- Biophilic expression on sunshade – More sculptural, Less commercial
- More dramatic shape for roof and presence





# PAT Mtg#7: Exterior Development



# PAT Feedback & Design Options

## PAT Meeting #6 Feedback

- Entry appears dark - Building feels muddy + Lacks contrast
- Somewhat heavy feeling under entry canopy - Deep shadows
- Needs to be light and bright - More prominent entry
- Option for a more vertical expression for primary entry
- Feels boxy, options for roof shapes at both the library and entry

1

## Design Options at Entry

- Lighten entry canopy
- Give entry greater definition
- Explore more of a vertical expression for entry
- Explore a more dramatic shape for the roof line

2

## Design Update for Library

- Biophilic expression on sunshade – More sculptural, Less commercial
- More dramatic shape for roof and presence

3

## Window Configurations Update

- Simple window shapes - Limit Mullions
- Maximize view





# PAT Mtg#7: Exterior Development



# PAT Feedback & Design Options

## PAT Meeting #6 Feedback

- Entry appears dark - Building feels muddy + Lacks contrast
- Somewhat heavy feeling under entry canopy - Deep shadows
- Needs to be light and bright - More prominent entry
- Option for a more vertical expression for primary entry
- Feels boxy, options for roof shapes at both the library and entry

1

## Design Options at Entry

- Lighten entry canopy
- Give entry greater definition
- Explore more of a vertical expression for entry
- Explore a more dramatic shape for the roof line

2

## Design Update for Library

- Biophilic expression on sunshade – More sculptural, Less commercial
- More dramatic shape for roof and presence

3

## Window Configurations Update

- Simple window shapes - Limit Mullions
- Maximize view

4

## Brick Color = “Study Tonal Range”

- Lighter in color – Similar to stone color
- Explore other brick color options



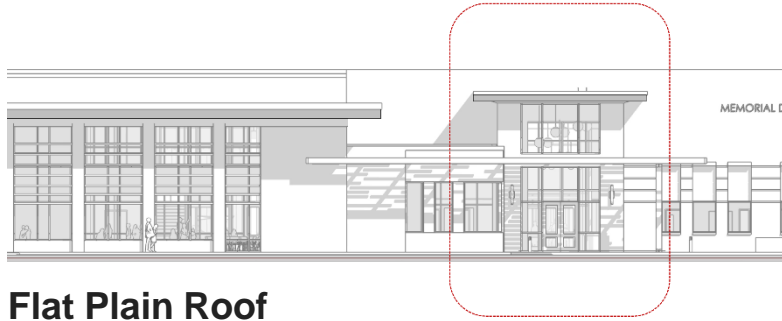


# PAT Mtg#7: Exterior Development

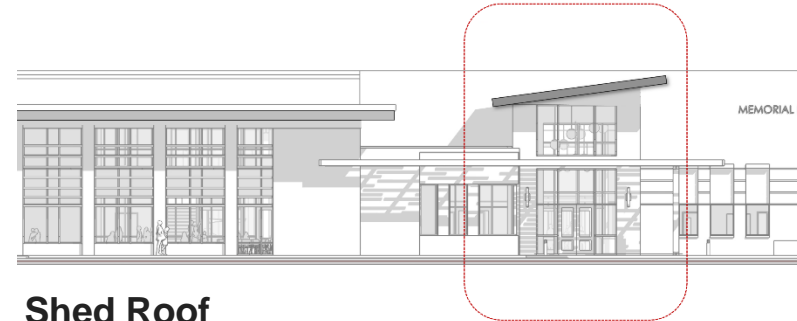
1

## Design Options at Front Entry

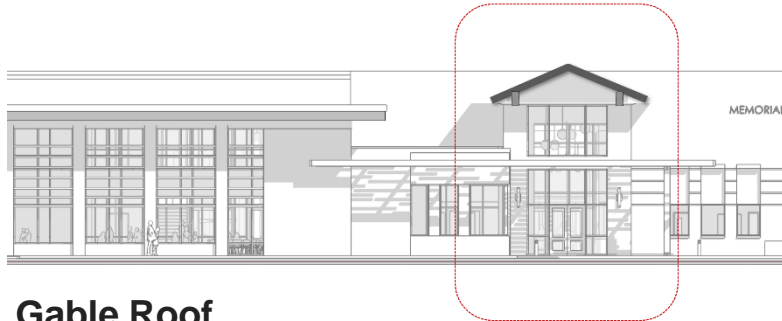
We considered several .....



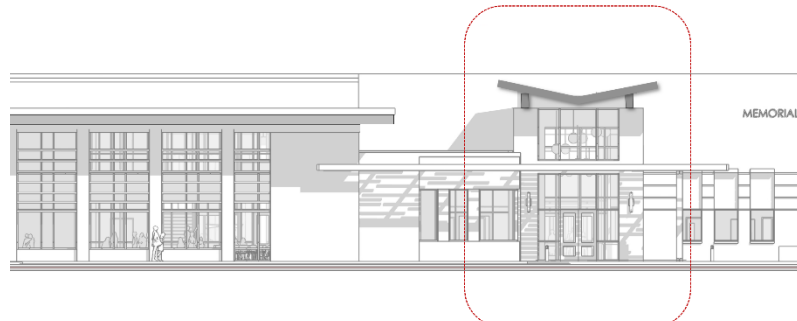
**Flat Plain Roof**



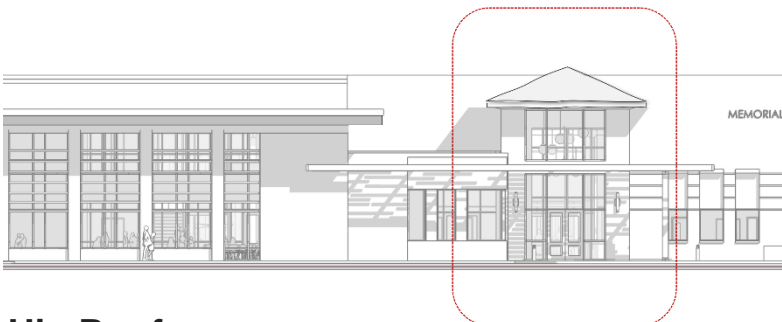
**Shed Roof**



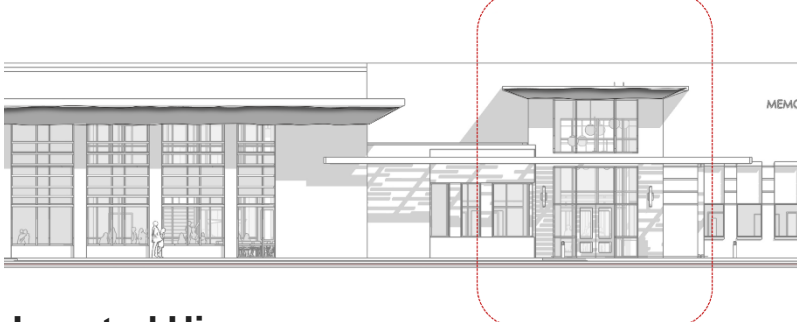
**Gable Roof**



**Butterfly Roof**



**Hip Roof**



**Inverted Hip**



# PAT Mtg#7: Exterior Development

1

## Design Option A at Front Entry

### Design Update:

- Roof edge simplified
- Library roof shape
- Canopy area updated
- Front Entry options







Side View

Front Porch Entry Sequence  
All Glass Front at Top above Canopy Trellis





# PAT Mtg#7: Exterior Development

1

## Design Option B at Front Entry

### Design Update:

- Roof edge simplified
- Library roof shape
- Canopy area updated
- Front Entry options



Front View

Extended Stone Columns above Canopy Trellis





Side View

Front Porch Entry Sequence  
Extended Stone Columns above Canopy Trellis





# PAT Mtg#7: ENGAGEMENT - A Front Entry Options

1

PAT Handout

Select YOUR Preferred Option

Name: \_\_\_\_\_

## OPTION A:

Entry Feature Street Elevation with  
**All Glass Front Window at the Top**  
above the trellis canopy



## OPTION B:

Entry Feature Street Elevation with  
**Stone Columns Extending to the Top**  
above the trellis canopy







Stone Columns | Simplified Window Mullions | Window Screen Accent Colors | Shaped Roof





**Interior View: Stone Columns | Simplified Window Mullions | Window Screen**





**Window: Single Opening, No Mullions | Simplified Brick Detailing + Roof Edge**





# PAT Mtg#7: Exterior Development Summary | Street View Elevation

MEMORIAL DRIVE ELEMENTARY SCHOOL







# PAT Mtg#7: Exterior Development

4

## Brick Color Ranges

### Reminder: PAT Consensus Decisions

#### MDE Design Principles

- Blend into the Landscape
- Natural Materials
- Neutral Palette
- Compliment the Wooded Setting

White



Cream



Buff



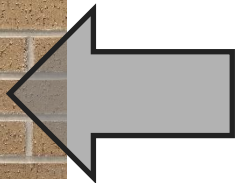
Tan



Brown



Ebony



This is where we were at PAT Mtg #6





# PAT Mtg#7: Exterior Development 4 **Brick Color & Material Palette**

Option A: Lighter Neutral Color

White



Cream



Buff



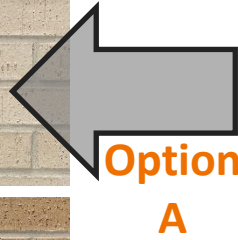
Tan



Brown



Ebony



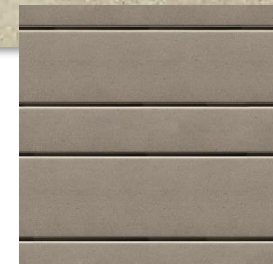
Brick Masonry



Stone Masonry



Wood



Metal Panel



Window / Trim





# PAT Mtg#7: Exterior Development

4

## Brick Color & Material Palette

Option B: Softer Neutral Color

Pinks

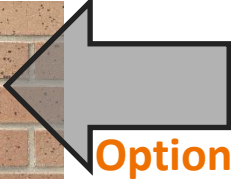

Rose

Peach

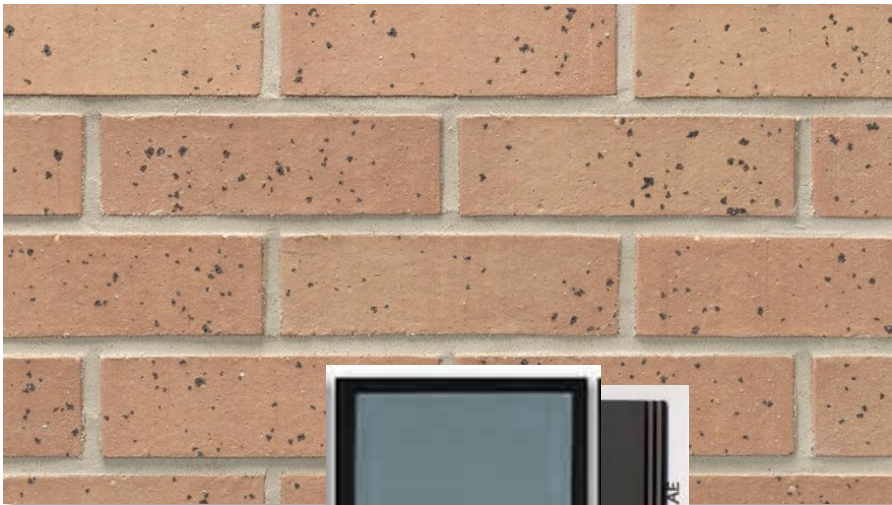
Orange

Reds

Crimson



Brick Masonry



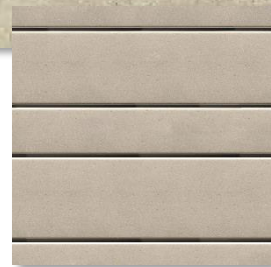
Stone Masonry



Wood



Metal Panel



Window / Trim





# PAT Mtg#7: ENGAGEMENT - B Brick Color Options

4

PAT Handout

Select YOUR Preferred Option

Name: \_\_\_\_\_

## OPTION A:

### Lighter Color Palette

Natural Materials & Neutral Tones



## OPTION B:

### Soft Color Palette

Natural Materials & Neutral Tones







# Item 4

**Seek PAT Final Consensus**  
SD/DD Recommendation  
+ Next Steps







# PAT Mtg#6 Engagement: Final Consensus Support

Name: \_\_\_\_\_

PAT INDIVIDUAL VOTE

Provide YOUR Individual Support



## New MDE - Proposed Design Recommendation

**Please help us confirm we have achieved consensus approval** of the design we have presented to you through the Project Advisory Team process. This will serve as the recommendation to be presented to the Board of Trustees.

PAT Member Acknowledgement

*Signature of PAT Member*



**I Do Support**  
the recommendation

...I Do NOT Support the Recommendation for the following reason(s)





# PAT Meeting #7 – Closing Remarks | What's Happening Next?

THANK YOU to our PAT Committee for  
YOUR participation and involvement on the  
proposed Design of the NEW Memorial Drive ES!



**Upcoming Presentation:  
You're Invited!**

**New Memorial Drive ES  
Design Recommendation**

**Presentation  
to  
SBISD Board of Trustees**

**August 8, 2022**