



# WELCOME TO BUNKER HILL ELEMENTARY!

We are committed to providing progressive, meaningful instruction through communication, collaboration and congruent teaching in a caring environment.

**Bunker Hill Elementary School**  
Spring Branch ISD



## Bunker Hill ES Replacement SD/DD Recommendation

June 8, 2020





## Table of Contents



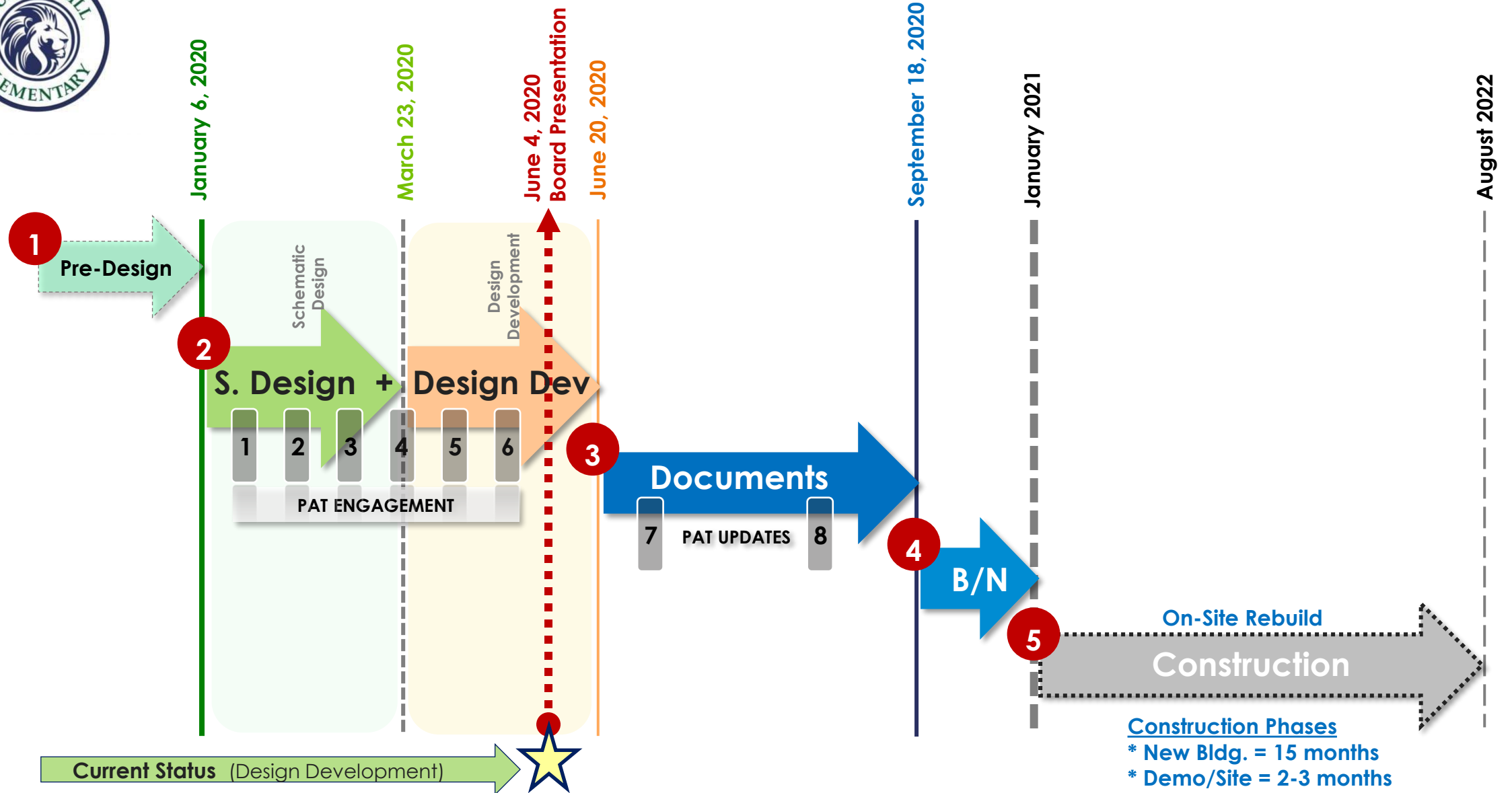
- 01 **Introduction** - Project Scope + Schedule
- 02 **PAT Engagement** - Process Overview
- 03 **Recommendation** - Bunker Hill ES Replacement





## Project Scope:

- Replacement of Bunker Hill Elementary School
- **On-Site** Transition
- **Approx. 103,360 SF** per SBISD Educational Specifications
- **18-20 Month** total Construction period







## Table of Contents

- 01 **Introduction** - Project Scope + Schedule
- 02 **PAT Engagement** - Process Overview
- 03 **Recommendation** - Bunker Hill ES Replacement

January 2020

- 1 Site Influences
- 2 Program Space Types
- 3 Functional Relationships
- 4 Space Type Attributes
- 5 Architectural Expression

**PAT #1**  
Jan 14th

Site Analysis

**PAT #2**  
Feb 4th

Site Concept

Bldg. Concept

**PAT #3**  
Mar 3rd

Site Concept

Bldg. Concept

Visual Listening

**PAT #4**  
April 21st

Site Plan

Floor Plan

Preliminary

3D Building Massing

**PAT #5**  
Apr 21st

Site Plan Update

Floor Plan Update

Preliminary

3D Design Exterior Views

**PAT #6**  
May 12th

Final Site Plan

Final Floor Plans

Preliminary

3D Design Interior Views

“Virtual” Meeting (4/21)

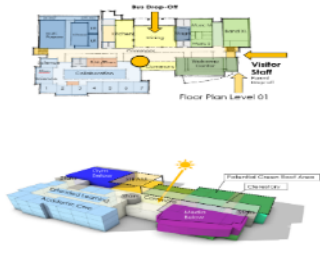
“Virtual” Mtg

PAT Consensus  
May 2020

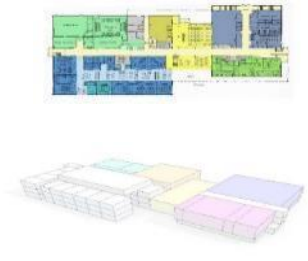
CONCEPTUALIZE



EXPLORE



DEVELOP

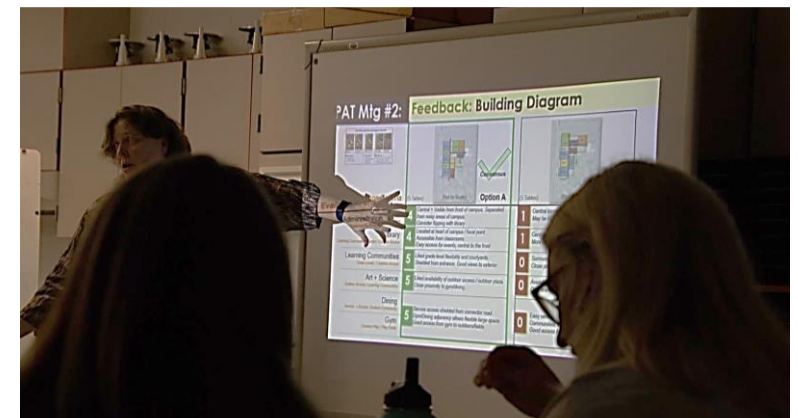
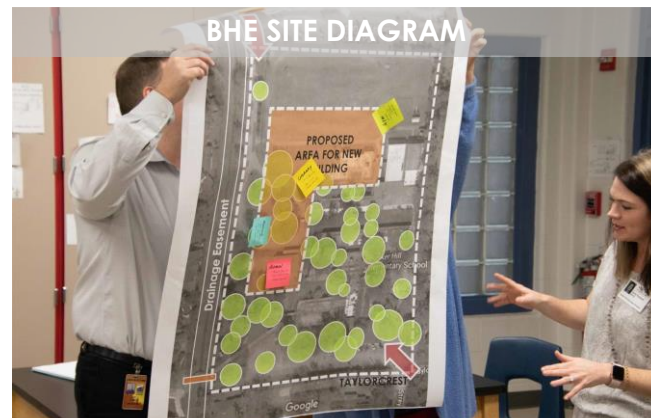


REFINE



# PAT Mtg #1 thru Mtg #3: PAT Engagement → PAT Input from variety of activities influenced New BHE Design

## PAT INPUT / FEEDBACK



PAT Mtg #3: RECAP

PAT Mtg #3 Feedback → Guiding Principles from PAT set objectives for new BHE design

Q1: Does the proposed plan meet the objectives of the BHE Guiding Principles?

Meets Objectives	Does Not Meet Objectives
17	0
Unanimous	

Q2: Preferred Concept for BHE

Orthogonal Plan	Hybrid Plan	Organic Plan
4	2	6
		5
		Consensus

PAT Voting Results (17 voters)

- 4 votes = Orthogonal Plan
- 2 votes = Hybrid Plan
- 6 votes = Organic Plan
- 7 votes = Hybrid Plan (5 Organic / 2 Orthogonal)

PAT Mtg #3: PAT Input / Engagement

PAT Guiding Principles

- 1. Create a Learning Community
- 2. Create a Shared Space
- 3. Create a Learning Community
- 4. Create a Shared Space
- 5. Create a Learning Community
- 6. Create a Shared Space

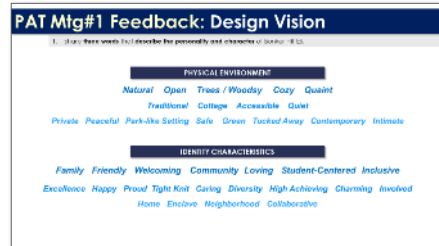
Hybrid Plan Learning Communities + Shared Spaces

ORTHOGONAL PLAN

ORGANIC PLAN



## BHE Personality / Character



## What makes BHE unique



## Existing: Favorite/Least Favorite



# Bunker Hill ES | Design Vision

## Common Themes from PAT:

- Community Oriented / Sense of Closeness
- Embedded in Neighborhood
- Access to Outdoor Learning
- Student Centered / Inclusive
- Natural / Open / Trees / Woodsy
- Welcoming / Family / Friendly

### Support Student/Community

PAT Mtg#1 Feedback: Educational Vision		
1. Describe how the building can help support both Student engagement and Community activities.		
<b>FLEXIBILITY</b> Larger and more flexible meeting, learning and work areas Spaces that fit evening programs, performances and community activities Ability to open up public spaces from evening community Spaces with room to work and store Show classrooms / better access	<b>LEARNING ENVIRONMENT</b> Incorporate access to outdoor learning opportunities Library at center of instructional spaces Dedicated areas where students are focused as move about freely Spaces for special learning activities	<b>PHYSICAL ENVIRONMENT</b> Taking advantage of natural environment as an asset More Parking Use of Natural Lighting Well-being Environment

### 21st Century Learning Environment

PAT Mtg#1 Feedback: Educational Vision		
2. How does the building help create a modern 21st Century teaching & learning environment that supports and enhances learning programs?		
<b>LEARNING ENVIRONMENT</b> Technology: Access to / Use of / Adaptable Flexible collaborative spaces for meeting and learning (meeting classrooms) Practical and interactive Platform Equipment advances for their level that encourage learning the process Library at center of instructional spaces Labs with new world applications / environments for future skill sets Dedicated Gifted/Talented space	<b>PHYSICAL ENVIRONMENT</b> Ample Natural Light / Views to Exterior Safety Energy efficient / climate focused "Creative environment" - Creative thought	<b>FLEXIBILITY</b> Flexibility Forward Looking  <b>COMMUNITY</b> conducive for Parent involvement Building Community

### Teaching and Learning

PAT Mtg#1 Feedback: Educational Vision		
3. Describe how teaching and learning have changed at Bunker Hill Community Center to 2025.		
<b>TEACHING STRATEGIES</b> Collaborative Teaching and Learning Observation (not teacher focused to Student focused) Microcast from 2-5's to Thinking Skills More hands on / individualized instructional Approach Team teaching Using evidence based Practices	<b>TECHNOLOGY</b> Open-changing technology / growth of personal technology Information Availability Science Lab / Edspace/Advances  <b>COMMUNITY</b> Safety and Security Design/Architecture More access + better student body	<b>PHYSICAL ENVIRONMENT</b> Classroom spaces / instructional areas use small and large group instruction "No longer 'Choose' - 'Choose'" Open classroom Diverse / Inclusive/Equitable

## Bunker Hill ES | Educational Vision Common Themes from PAT:

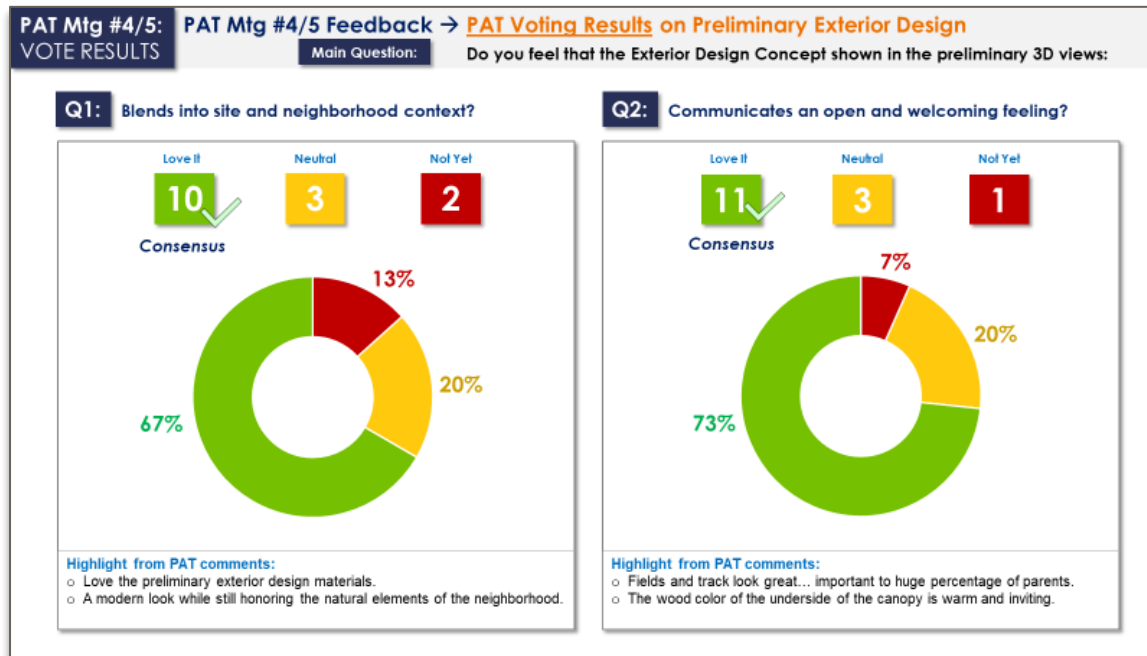
- Library at Center of Instruction
- Natural Light / Views to Exterior
- Flexible / Collaborative Spaces
- Access to Outdoor Learning
- Safe Environment / Student Movement
- Student Focused / Build Thinking Skills

## **Bunker Hill ES | Guiding Principles Design Objectives from PAT:**

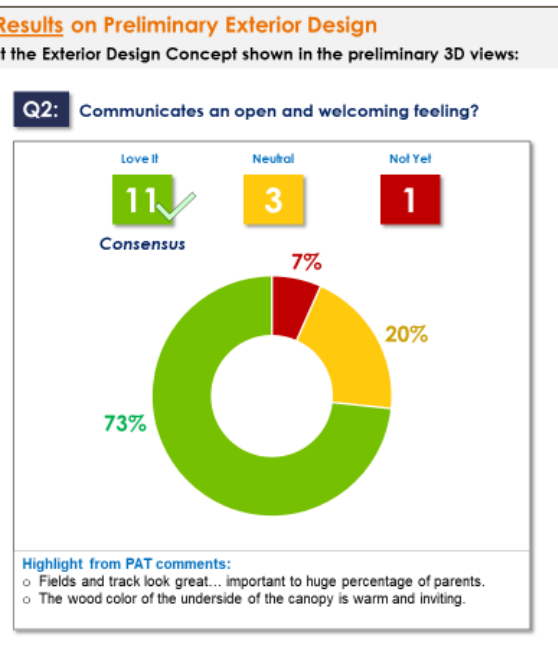
- 1. Open and Welcoming feeling.**  
Inviting to and inclusive of the diverse community.
- 2. Embedded within Natural setting.**  
Connected with views and access to walkable neighborhood.
- 3. Student centered and Parent involved.**  
Celebrating excellence, achievement and tradition.
- 4. Flexible, Collaborative and Forward Thinking.**  
Responsive to Teaching and Learning objectives over time.



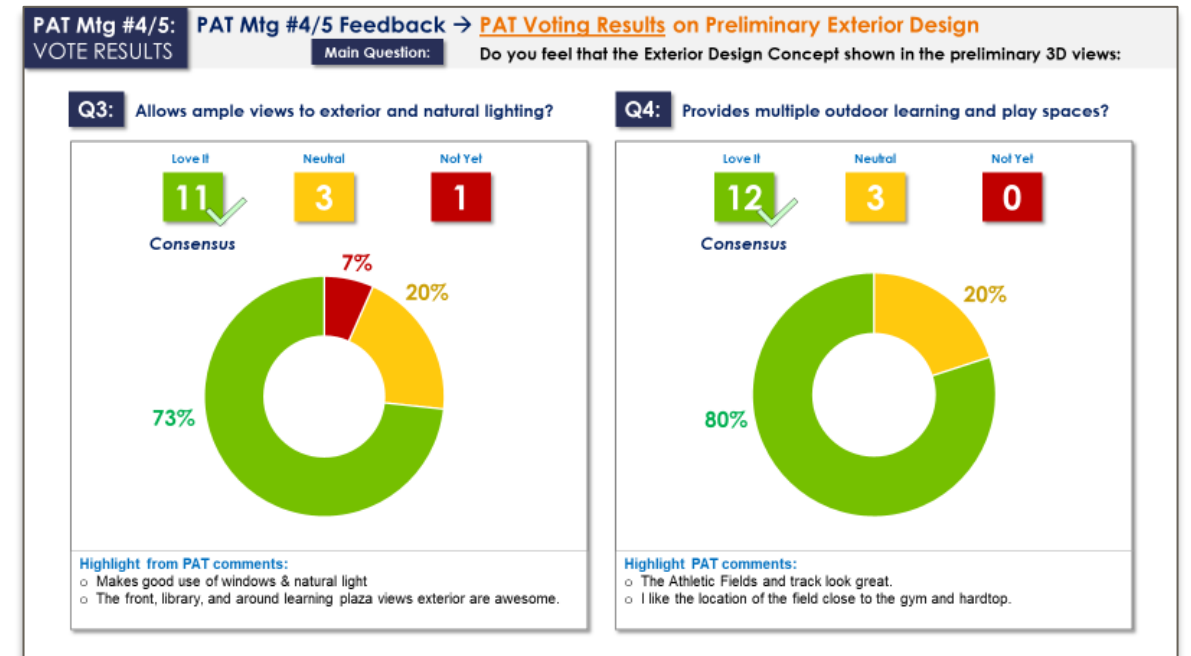
The design team provided **Preliminary 3D Views** showing the **Exterior Design (PAT Mtg #4/5)** to seek feedback from the PAT and confirm if the design development was heading in the right direction.



Blends into Neighborhood Context



Open and Welcoming Feeling

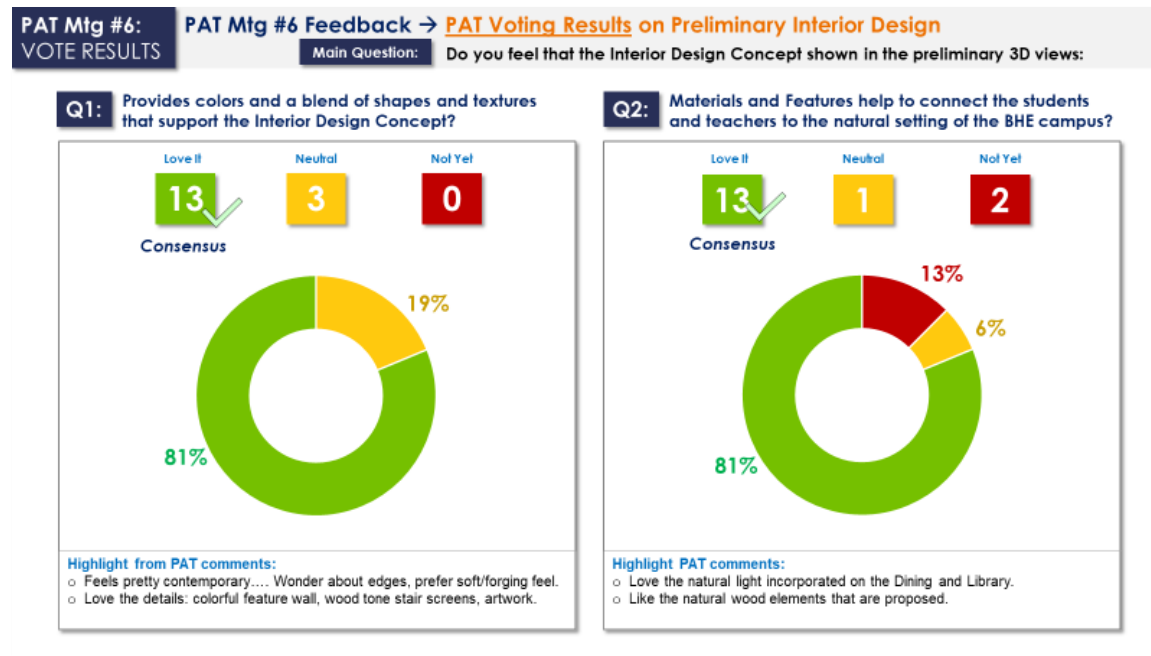


Views to Exterior + Natural Lighting

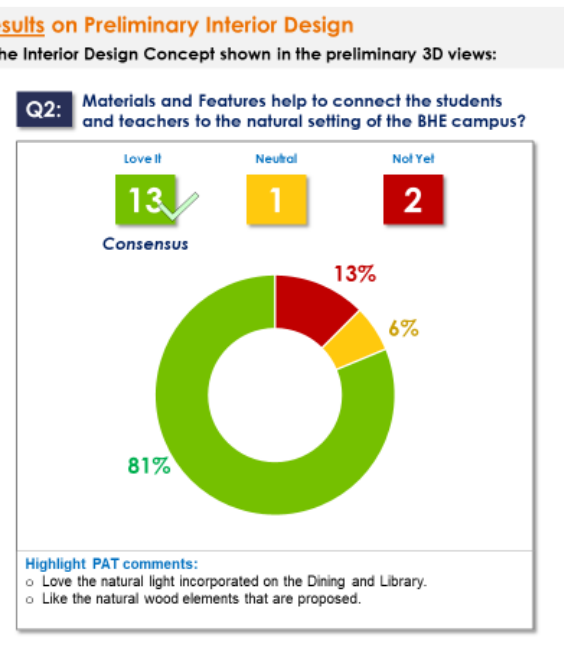
Outdoor Learning + Play Spaces

Based on the PAT member individual responses to the survey questions it shows we have CONSENSUS from the PAT the Exterior Design is heading in the right direction.

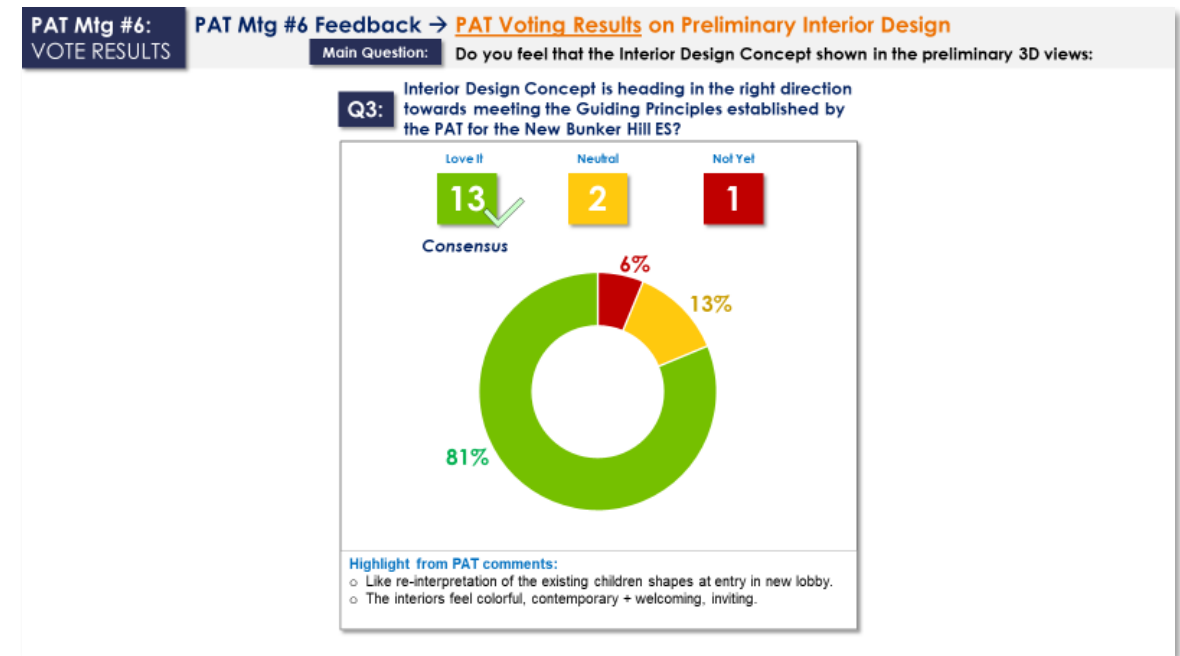
The design team provided **Preliminary 3D Views** showing the **Interior Design (PAT Mtg #6)** to seek feedback from the PAT and confirm if the design development was heading in the right direction.



Blend of Colors, Shapes, Textures



Connection to BHE natural setting



Support BHE PAT Guiding Principles

Based on the PAT member individual responses to the survey questions it shows we have CONSENSUS from the PAT the Interior Design is heading in the right direction.

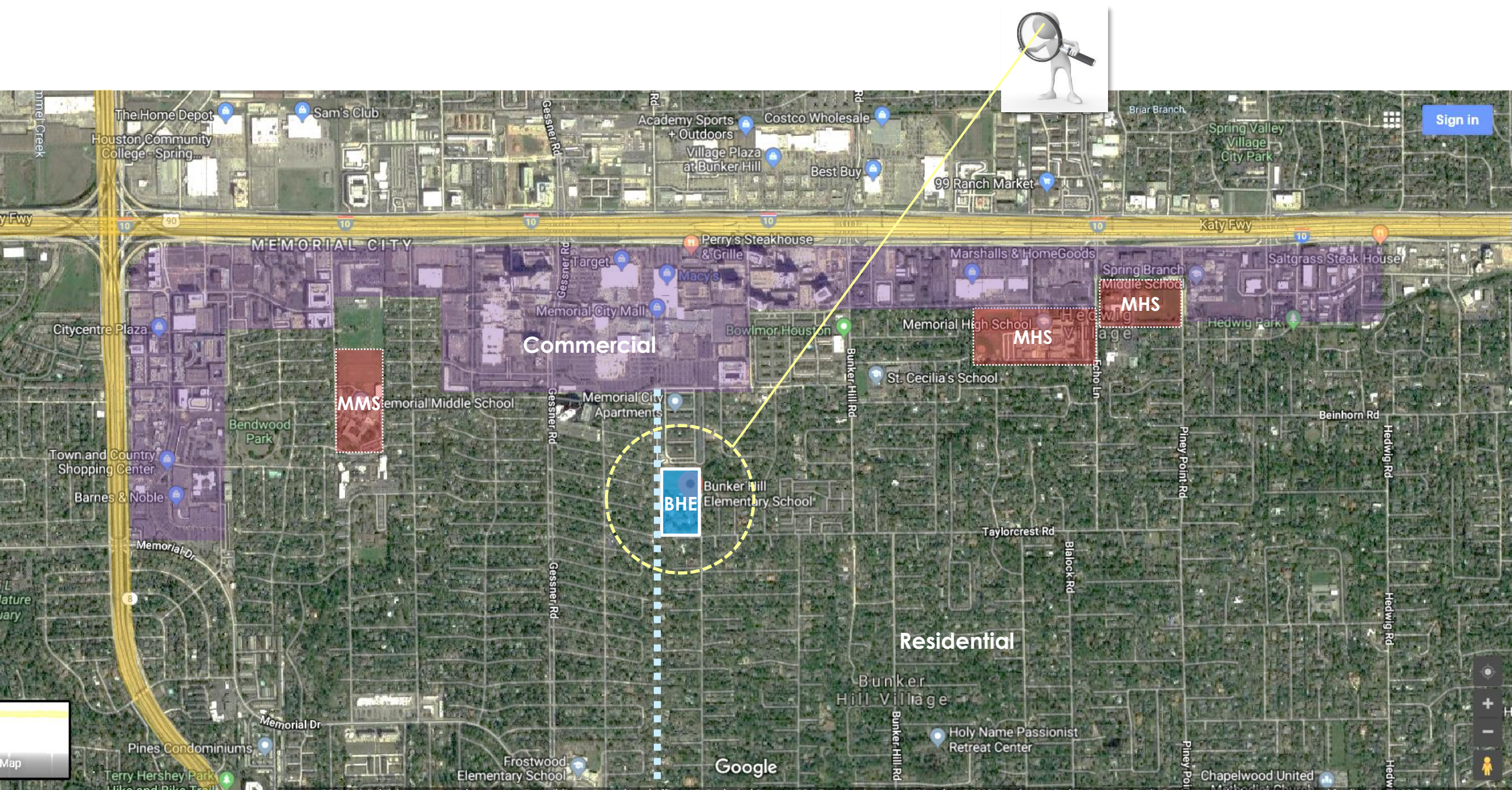


## Table of Contents

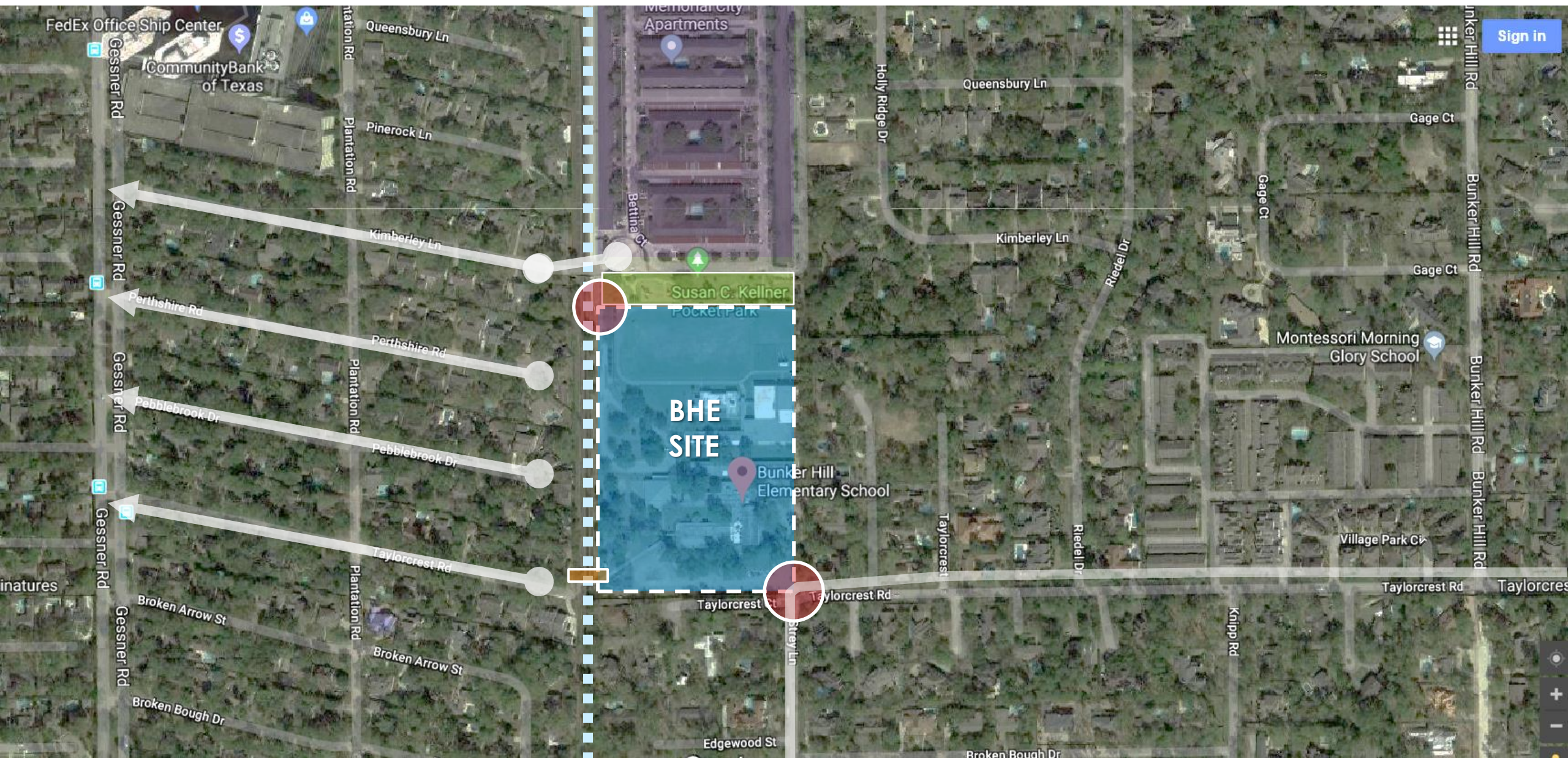
- 01 **Introduction** - Project Scope + Schedule
- 02 **PAT Engagement** - Process Overview
- 03 **Recommendation** - Bunker Hill ES Replacement







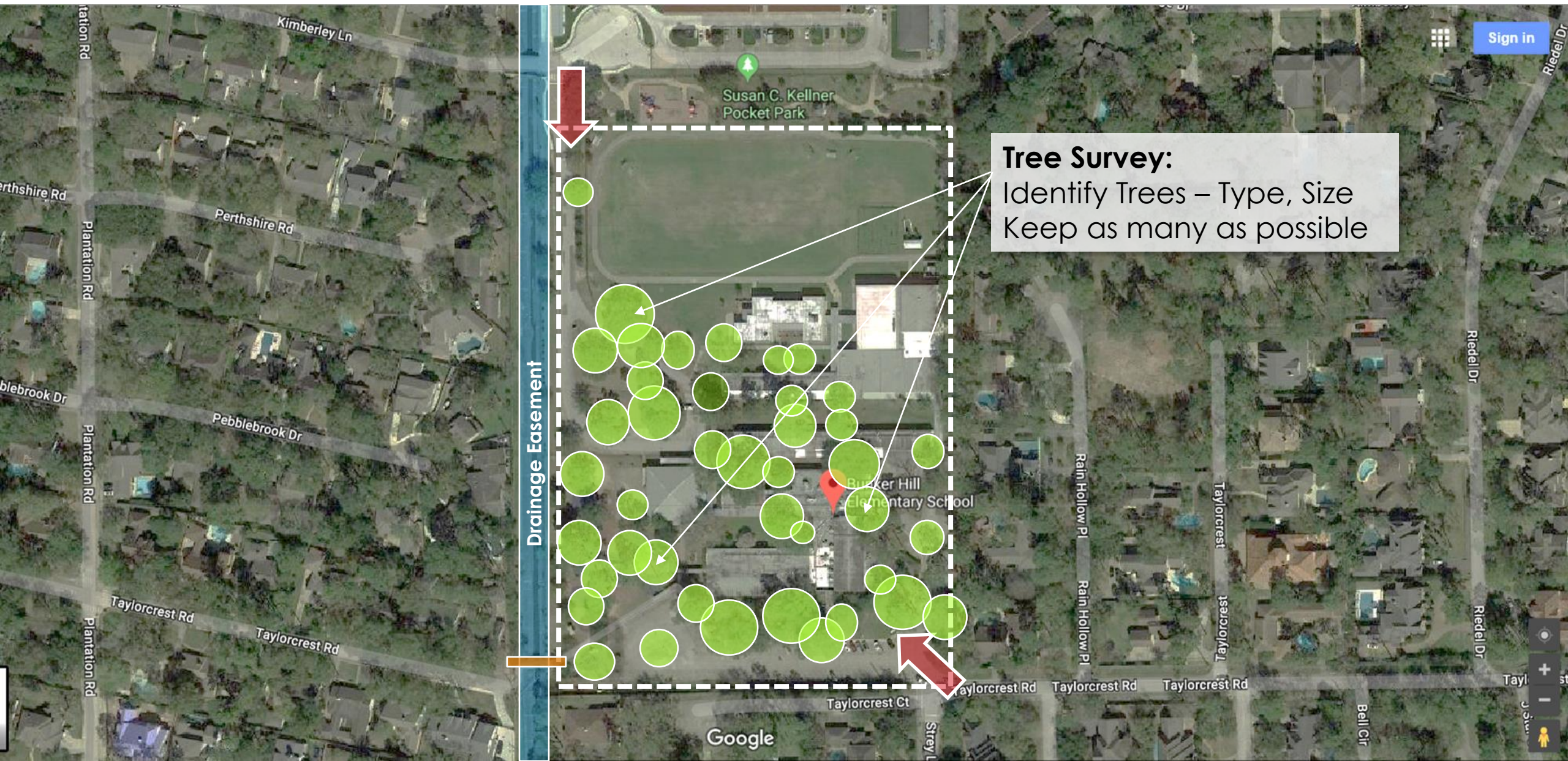


















## Existing Condition Site Constraints

50' HARRIS COUNTY DRAINAGE EASEMENT

50' BUILDING SETBACK

ROADWAY EASEMENT

UTILITY EASEMENT

Site Access points (Internal Connecting road)

2 Story Height Max.

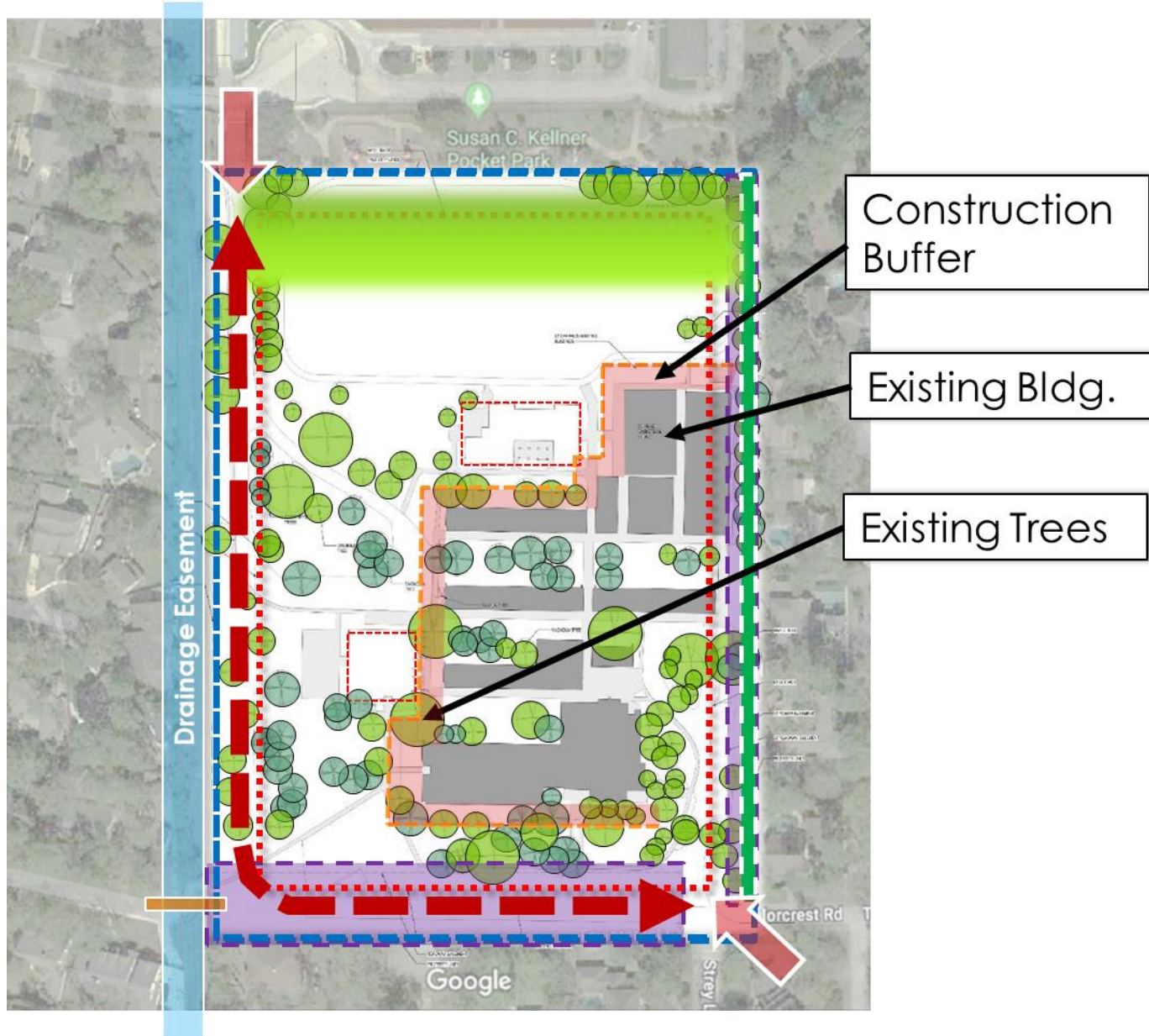
Residential Zones on Three sides

buffer from Apartments Undetermined  
future use

Existing Building & Existing Trees-survey



Traffic Patterns and Pedestrian Circulation





## 50' HARRIS COUNTY DRAINAGE EASEMENT

## ROADWAY EASEMENT

Site Access points (Internal Connecting road)

2 Story Height Max.

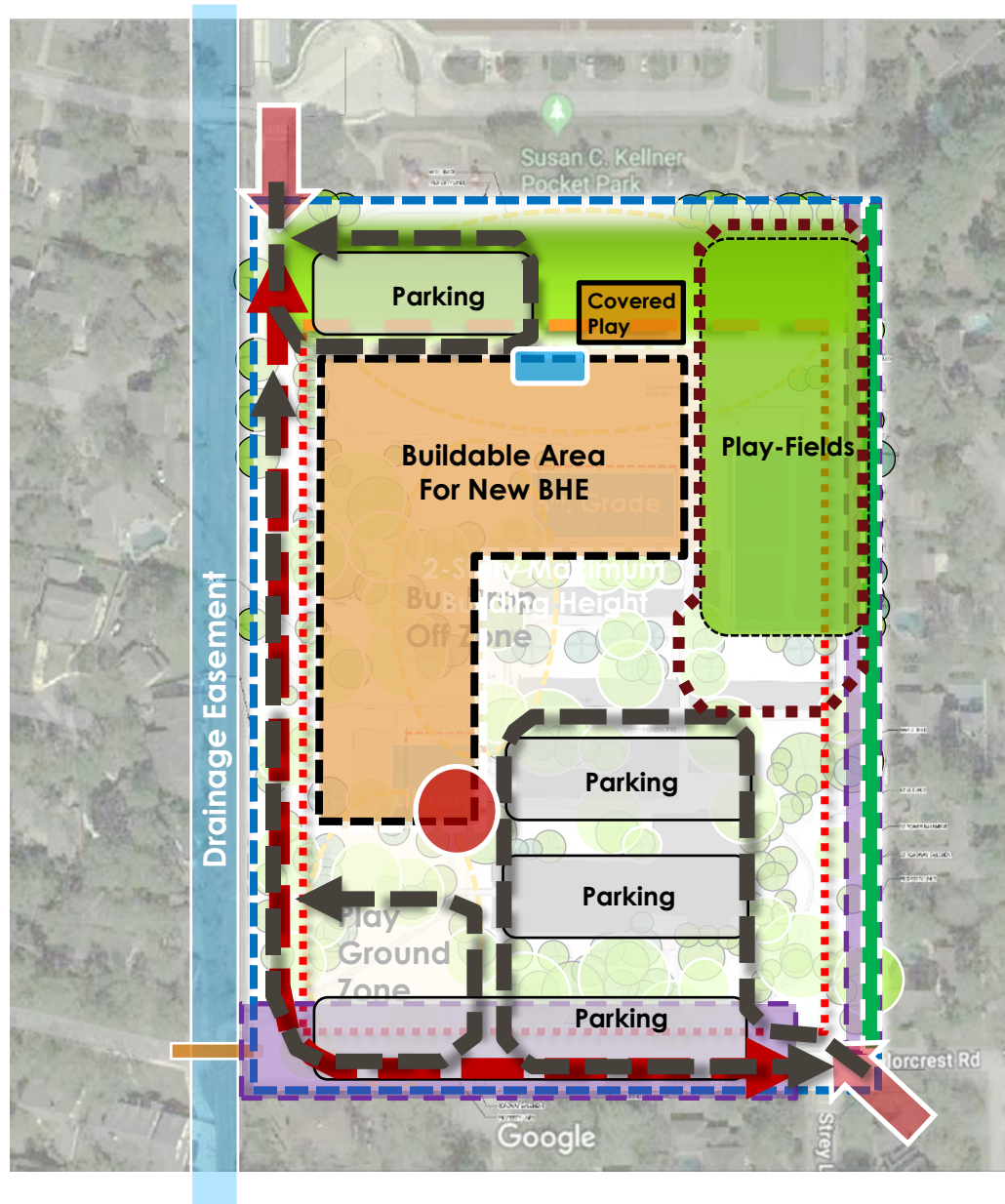
Residential Zones on Three sides  
buffer from Apartments Undetermined  
future use

### Existing Building & Existing Trees-survey



## Traffic Patterns and Pedestrian Circulation





## Site Plan

### Functional Relationships

**Entry Drives:** Parent Drop-off, Visitor Entry + Bus Drop-Off

**Parking:** Visitor, Staff, Service

**Outdoor Play:** Covered Play, 1/4 Mile Track, Fields

**NW Entry:**  
Parent  
Stacking  
+ Pick-up  
Drop-off

Pedestrian

Gate

Parent Drop-off

Bikes

Service

Back  
Entry

Bikes

Play  
Fields

Learning  
Plaza

Gate

Front  
Entry

Bus Drop-off

Visitor Parking

Visitor / Staff Parking

Staff Parking

Playground

Gate

Pedestrian

Pedestrian

**SE Entry:**  
Buses + Visitors



## Bunker Hill ES Design Development Site Plan Elements

### 1. Perimeter Boundary / Security

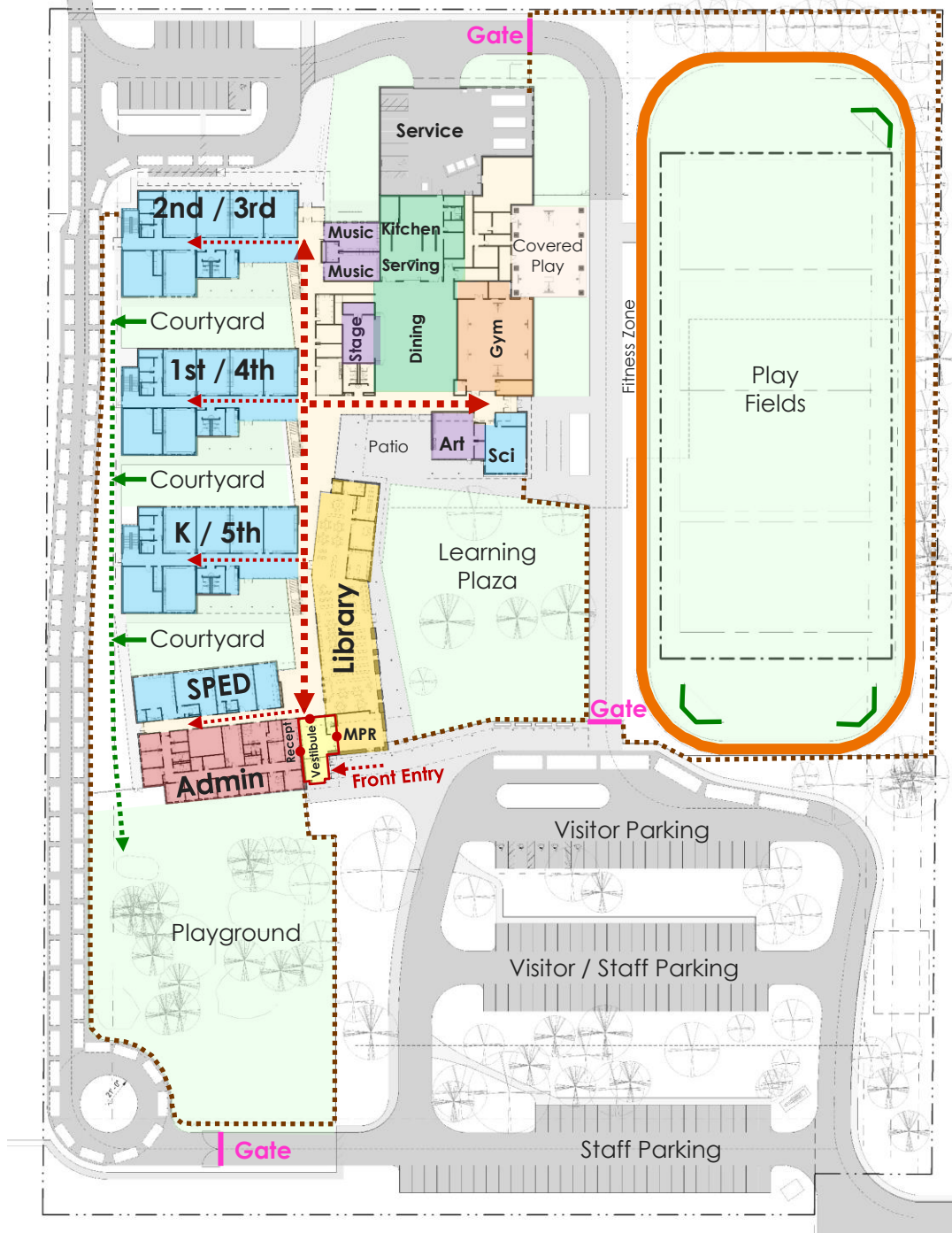
- a) **Site Access** (Existing access points to campus remain as is)
- b) **Site Fencing** (6ft at Perimeter + Learning Plaza, 3 Gates)
- c) **Building** (Main Front Entry, Back Secondary Entry)

### 2. Traffic Flow

- a) **Pedestrian Walks** (3 points of entry)
- b) **Parent Drive/Drop-off** (NW corner from neighborhood)
- c) **Bus Drive/Drop-off** (SE corner from Taylorcrest)
- d) **Visitor Entry** (SE corner from Taylorcrest)
- e) **Student Bike Racks** (80 near Gym + 20 at Parent Drop-off)



## Bunker Hill ES Design Development Site Plan Elements



### 3. Building Organization

- a) **Main Entry + Administration** (Identifiable, 1-Story)
- b) **Learning Communities** (2-story Classroom Wings)
- c) **Shared Spaces** (Library, Dining, Gym, Specials)

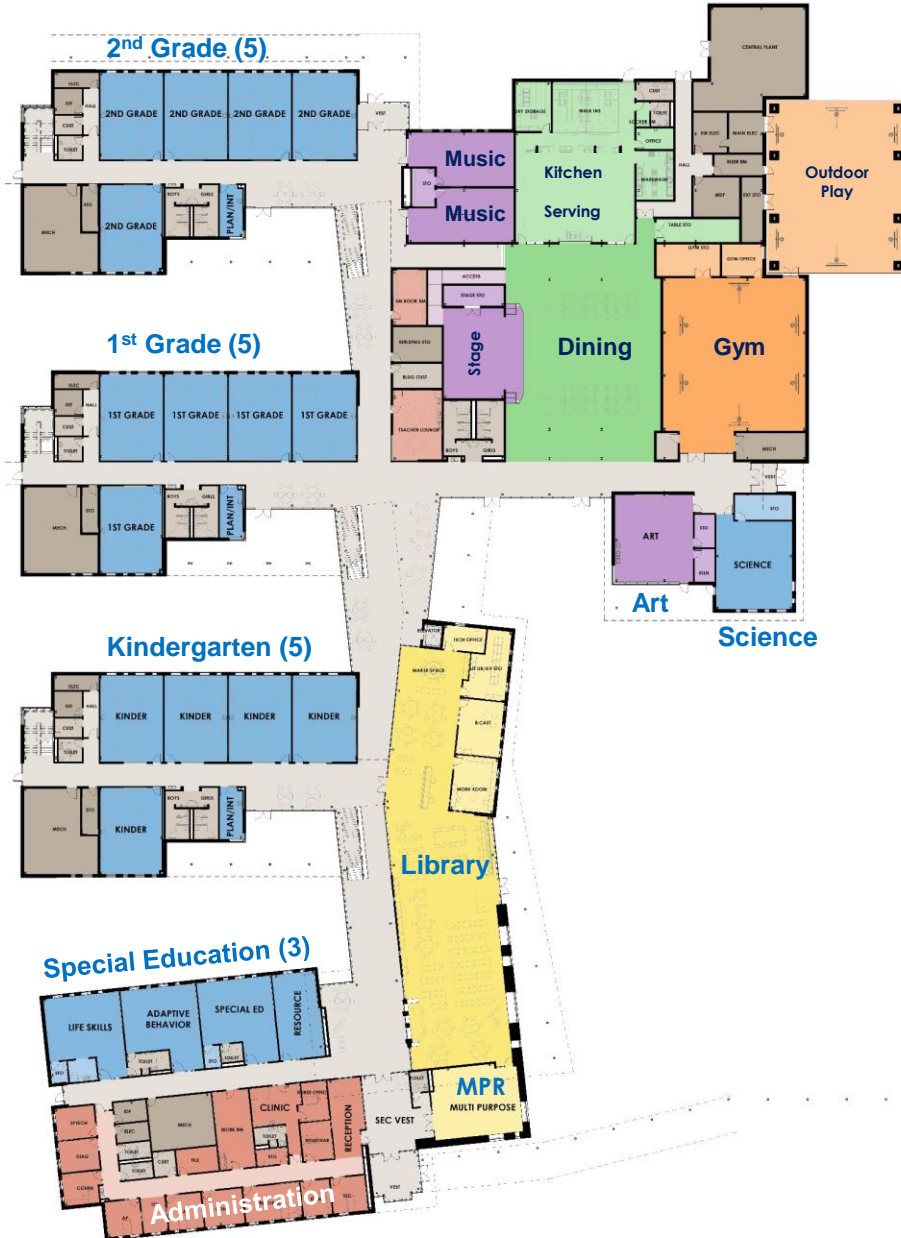
### 4. Outdoor Spaces

- a) **Learning Community Courtyards** (Intimate, Protected)
- b) **Learning Plaza** (Educational Patio, Trees, Green Space)
- c) **Outdoor Play** (Gym, Covered Play, Fields, Fitness Zone)
- d) **Playground** (Secure area near front)



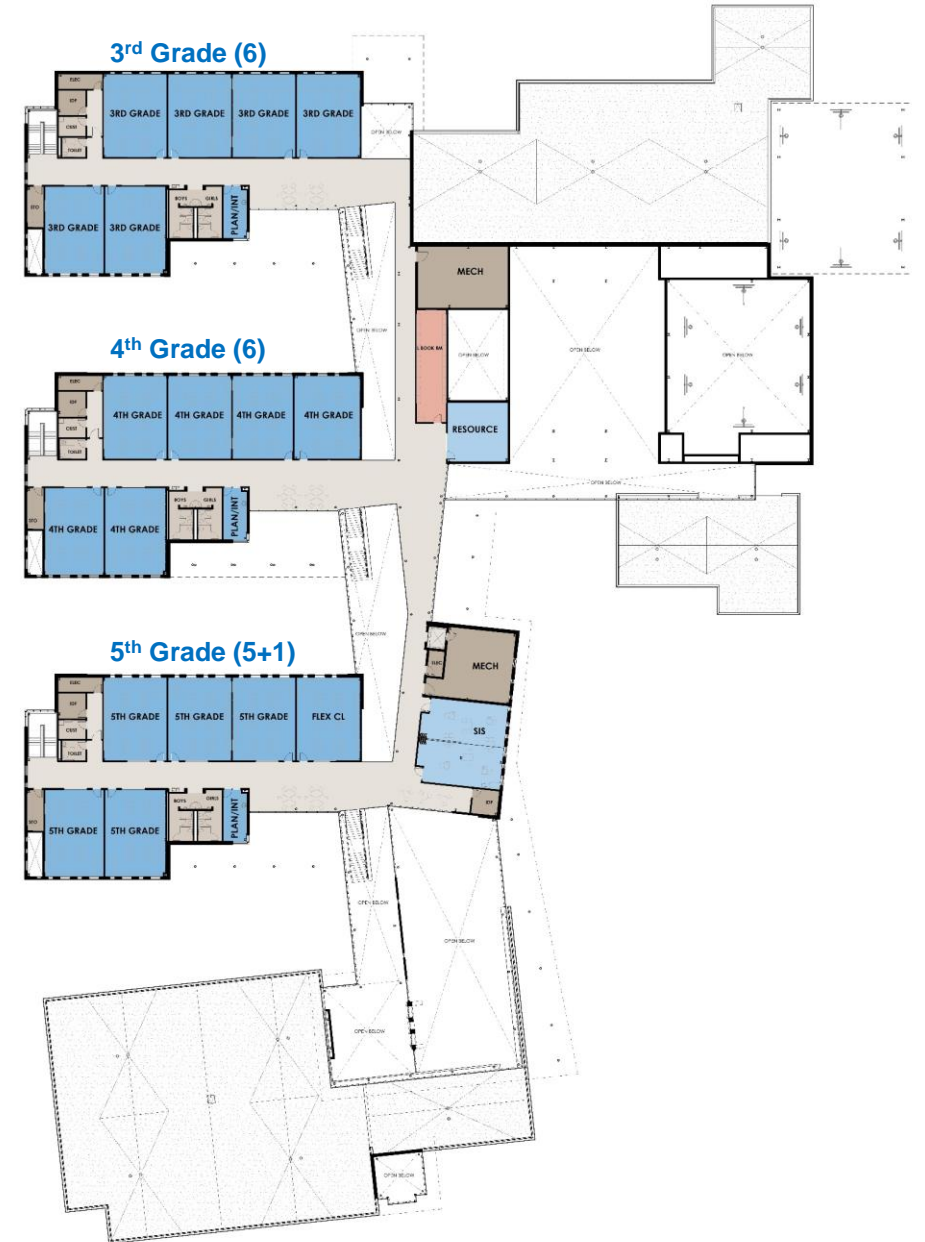
# Bunker Hill ES Design Development

## Floor Plan Elements

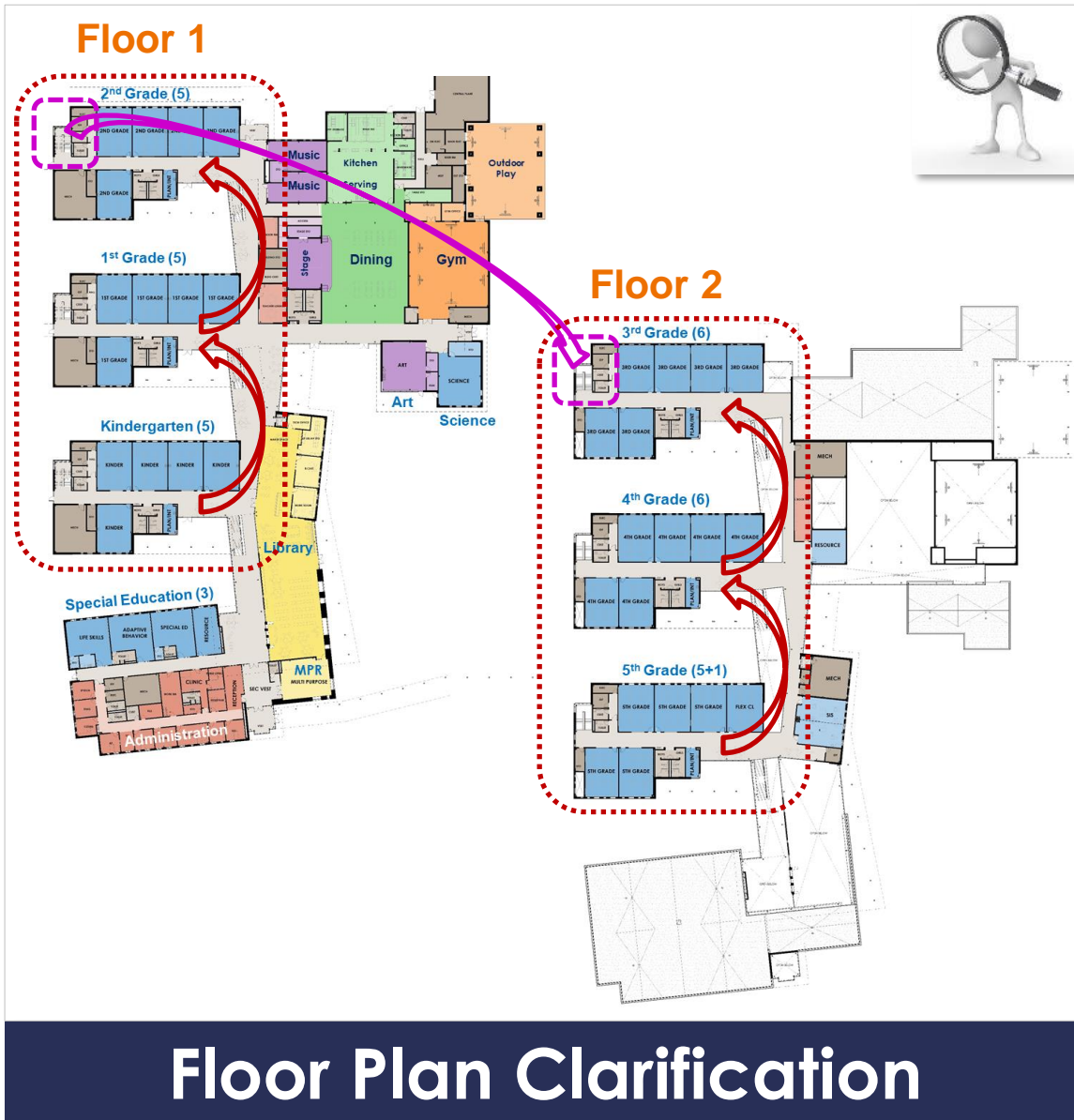


5 = PK/Kinder  
 5 = 1<sup>st</sup> grade  
 5 = 2<sup>nd</sup> grade  
 6 = 3<sup>rd</sup> grade  
 6 = 4<sup>th</sup> grade  
 6 = 5<sup>th</sup> grade (5+1)  
**33 Classrooms Total**

- Legend**
- Administration
  - Media Center
  - K-5<sup>th</sup>, SPED, Science
  - Collaboration/Flex
  - Dining Commons
  - Gym / C. Play
  - Art / Music
  - Building Support
  - Circulation







## Floor Plan Clarification Information:

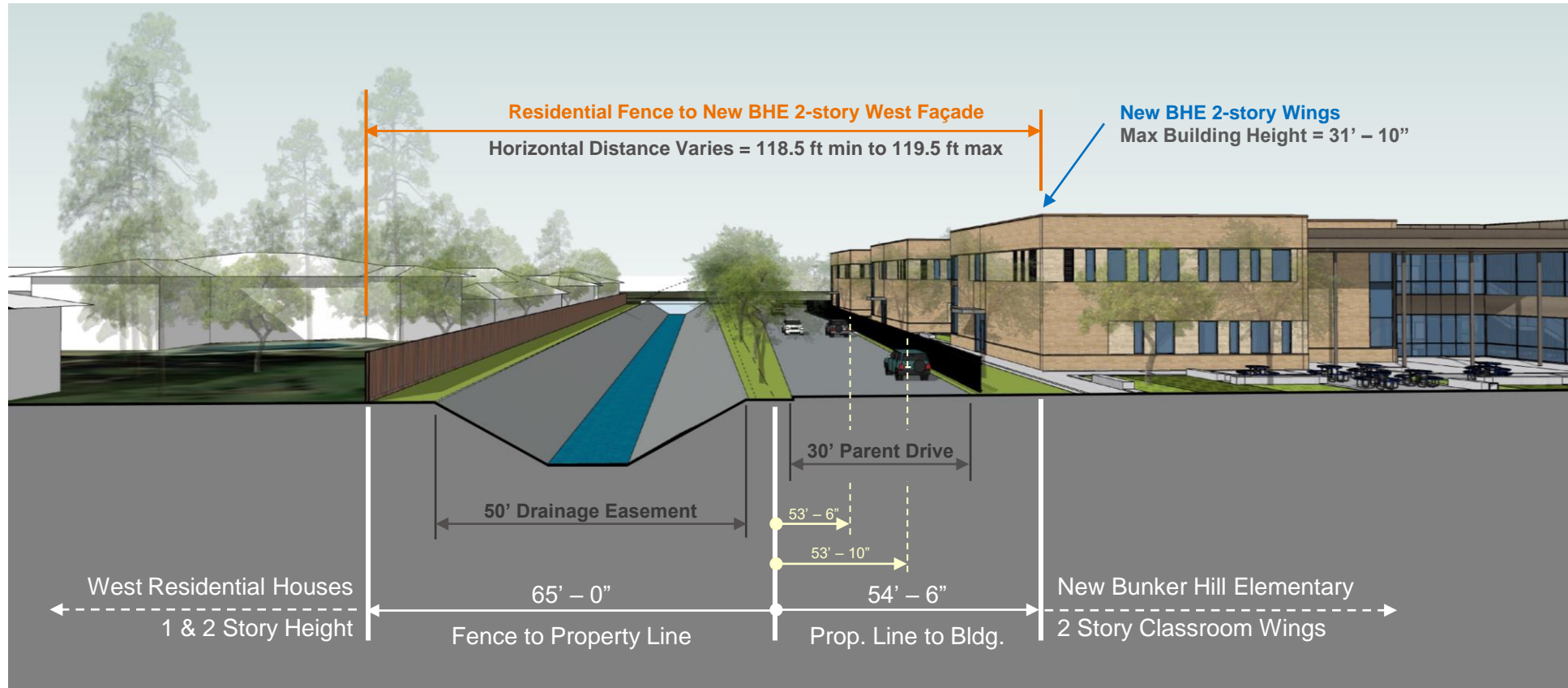
We continue to work with SBISD on design development.

This slide provides Site Plan clarification information to PAT questions from the web survey that are within PAT Charge.

### Floor Plan Clarification on classroom quantity + location:

- **Demographics:** The District has conducted a 2020 District wide Demographic Study and BHE future enrollment predictions can be accommodated within the number of classrooms in the design.
- **Classroom Quantity:** The design provides one extra classroom than originally planned (32 + 1 flex classroom) as a result of the building design layout. This provides grade level swing space and will also accommodate any future enrollment growth.
- **Grade Level Swings:** The design provides flexibility for grade level classrooms as student enrollment adjusts over time.
  - a. Enrollment changes impacting the number of grade level classrooms can shift between wings on the same floor.
  - b. If K-2<sup>nd</sup> grade classroom quantity needed exceeds the quantity on floor 1, a 2<sup>nd</sup> grade classroom can be located on floor 2 near designated stairway for 2<sup>nd</sup> Grade students use.

# PAT Information Update: BHE Neighborhood Site Section



**Site Section Diagram illustrates site context critical dimensions of new BHE in relation to the west neighbors:**

**Horizontal Distance: Ranges from 118.5 to 119.5 ft at the new BHE 2-story Classroom Wing**

- 65' - 0" Total horizontal distance from Residential Fence to west BHE Property Line includes the 50ft drainage easement
- Horizontal distance of 2-story portion New BHE west facade varies in its location from west BHE property line.
- West Residential Houses vary in horizontal location from each respective fence that borders the drainage easement.

**Vertical Building Height: Maximum Building Height of 31' - 10" from first floor level to top of new 2-story portion of the new BHE Building.**

- West Residential Houses vary in height (1 & 2-story).

## Preliminary Exterior 3D Views

Building Shape / Forms + Exterior Finish Materials shown in the following 3D images communicate the proposed exterior expression of the new BHE design.

You will see how the **proposed exterior building materials** help create a new facility that **compliments** and fits into the surrounding **neighborhood context**.

**Brick colors** allow the building to **blend into a natural park like campus** setting.

**Wood tone** under the canopy and overhangs **with the slender columns evoke the image of trees**.

Use of **glass** provides **views and reflects** the trees and sky.

The organic shape of the **Library embraces the Learning Plaza** anchored by the Art + Science.

**Decisions made and direction set from PAT Mtgs #1 thru #3 together influenced** the Exterior Development of the Design you are about to see in the next group of slides.



# Bunker Hill ES Design

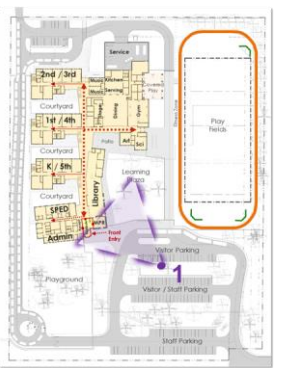
## Preliminary 3D Exterior Views

### 1 View of Front of School

Students, Staff and Visitors will approach the school has a similar feeling as the context of the wooded neighborhood.

The design images shown have been developed based on PAT Committee input and feedback:

- **Scale/Height** of front entry blends with the **neighborhood** context.
- Glass entry vestibule at **front entry** is clearly defined extending an **inviting welcome** to visitors.
- Site design maintains a **park like setting** by preserving the **existing trees** that will be a feature of the Learning Plaza that embraces the new building.





# Bunker Hill ES Design

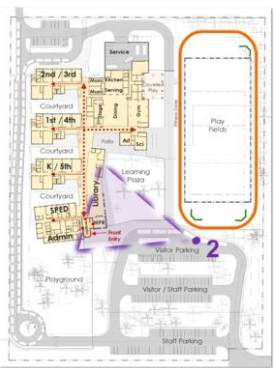
## Preliminary 3D Exterior Views

- 2
- ### View from Bus Drop-off

The canopy wood tone soffit provides cover from the elements as you approach the building entry along the path adjacent to the Learning Plaza and Library.

The design images shown have been developed based on PAT Committee input and feedback:

  - The **building height** steps up in scale from the 1-story front entry to the 2-story portion set back from the main pedestrian path.
  - The new school has a parklike setting with open **green space and landscape** in Learning Plaza.





## Bunker Hill ES Design

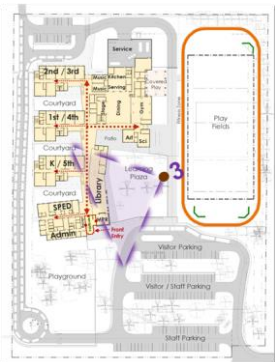
### Preliminary 3D Exterior Views

#### 3 View of East Bldg. Facade

This view we are inside the Learning Plaza looking back towards the Library + Front entry.

The design images shown have been developed based on PAT Committee input and feedback:

- The use of materials and window design of the Library sets it apart from the other building portions. The **Library** is the **academic heart** and central **architectural feature**.
- The **Learning Plaza** has a mix of hardscape paths and seating in the natural park setting providing **opportunities for outdoor learning**.





# Bunker Hill ES Design

## Preliminary 3D Exterior Views

### 4 View of Learning Plaza

The outdoor patio is nestled between the Art/Science building and Library with visual connection to Dining Commons + Flex space.

The design images shown have been developed based on PAT Committee input and feedback:

- The large patio area provides an area for **outdoor learning** and **outdoor dining** space for **parents** when they visit their **children** and **community** activities on the campus.
- The canopy **filters sunlight** through the baffles similarly to how light would be diffused through a tree canopy and provides **covered shade** for **outdoor learning** activities.





# Bunker Hill ES Design

## Preliminary 3D Exterior Views

### 5 View at Gym Entrance

The Art/Science building in the center of this view is embraced by the Library on the left and the Gym on the right.

The design images shown have been developed based on PAT Committee input and feedback:

- **Art and Science** has its own **dedicated outdoor patio** area with direct access to Learning Plaza.
- The students have direct access to the **Covered Play** from the **Gym**. There is an **extended activity zone** for bicycle racks, fitness and recreation activities.





# Bunker Hill ES Design

## Preliminary 3D Exterior Views

### 6 View at Parent Drop-off

Parent drivers enter the site and queue in the stacking lane campus connector drive with drop-off zone along the canopy leading to the building entry.

The design images shown have been developed based on PAT Committee input and feedback:

- The **parent drop-off entrance** has smaller **entry plaza** and **landscaping** elements like the front entry.
- There is **pedestrian plaza** provides **space for students in cars** independent of the **student walkers** and **bike riders** that arrive from the neighborhood.





## Bunker Hill ES Design

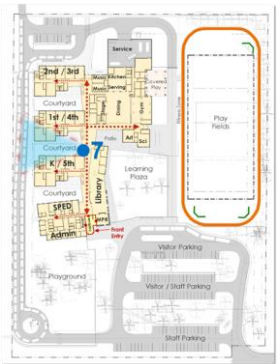
### Preliminary 3D Exterior Views

#### 7 View at Courtyard

This view is from within the Learning Community courtyard looking eastward from just outside the main circulation spine.

The design images shown have been developed based on PAT Committee input and feedback:

- Covered **outdoor learning** area can house multiple groups for **individual study + collaboration**.
- The **courtyards** have a combination of hardscape and landscape supporting a **variety of activities** (learning, socializing, connecting with nature).
- The windows provide **natural daylight** to the **classrooms** from the north and south side of the building.





*The preliminary 3D views presented communicates the new BHE exterior design concept: The Bunker Hill ES design creates a welcoming and inviting approach to the school set in a familiar wooded neighborhood. The exterior design incorporates building shapes and color tones reflecting the surrounding natural environment resulting in an engaging 21<sup>st</sup> century learning environment.*



## Preliminary Interior 3D Views

Building Shape / Forms + Interior Finish Materials shown in the following 3D images communicate the proposed interior expression of the new BHE design.

You will see how the **proposed interior finish materials** help create a new facility that **compliments and responds** to the exterior expression.

Exterior brick and stone walls **continue into the interior spaces to connect** the students and staff **with the outdoor learning environments**.

The character of the wood tones and color palette recall **organic patterns and textures of sky, water, plants and earth**.

Use of glass provides **natural daylight to the interior and views of the outdoor** park-like setting.

The playful **design of the feature wall** in the main corridor **engages the students** with the Library at the heart of the school.

**Decisions made and direction set from PAT Mtgs #1 thru #3 together influenced** the Interior Development of the Design you are about to see in the next group of slides.



# Bunker Hill ES Design

## Preliminary 3D Interior Views

### 1 Lobby / Main Corridor

The School Lobby and Main Corridor are filled with colors found in nature organized in both orthogonal and organic patterns.

The design images shown have been developed based on PAT Committee input and feedback:

- The **artwork** over the existing school main entry is reimagined here against **BHE's school color** to reinforce the **identity** and provide **familiarity** in the new environment.
- The **colorful feature wall** provides an immediate **visual connection** to the Library. The interior **glazing provides views** through the **Library** to the **Learning Plaza**.





## Bunker Hill ES Design

### Preliminary 3D Interior Views

#### 2 Library: View to Exterior

The connection to the outdoor Learning Plaza is heightened by the large glass view and exterior stone wall with reading nooks.

The design images shown have been developed based on PAT Committee input and feedback:

- **Windows** at exterior wall provide direct **views to the outdoors** and fills the Library with **natural daylight**.
- **Accent lighting** helps to **define** the genius bar and circulation desk as **unique destinations** within the library.
- The **warm colors** of wood and green accompanied with the **textures and patterns** of the interior finish materials reflect the **natural park like setting** of the Learning Plaza.





## Bunker Hill ES Design

### Preliminary 3D Interior Views

#### 3 Library: View to Interior

The full-height feature wall provides an engaging and functional centerpiece to the library flanked by views to the Learning Communities.

The design images shown have been developed based on PAT Committee input and feedback:

- The **flexible furniture** and **genius bars** located adjacent to the circulation desk provide a **variety of individual + group spaces** within the Library.
- The large amount of **glazing provides interior views** to the two-story learning community and the learning courtyard beyond, **connecting the library** with the other educational environments.





# Bunker Hill ES Design

## Preliminary 3D Interior Views

### 4 Learning Community

Students, teachers and parents are invited to flex zones and collaborative areas along the main circulation path.

The design images shown have been developed based on PAT Committee input and feedback:

- Each **learning community** is identified by a **unique color** for **wayfinding**. **Vibrant colors** mimic those found in nature, plants and animals.
- **Parents** and their **students** can share lunch during inclement weather at the **collaboration zone** near the dining commons. This space is defined by **earth tones** with **organic textures and patterns** in the flooring and globe shaped **accent lighting**.





## Bunker Hill ES Design

### Preliminary 3D Interior Views

#### 5 Dining Commons + Stage

The Dining Commons has a direct connection to the Learning Plaza. This large multi-purpose area provides ample space for student dining and large group assembly.

The design images shown have been developed based on PAT Committee input and feedback:

- The **angled form** of the library seen through the **two-story glazing** is traced into the cafeteria **angular shaped ceiling**, visually connecting the indoor / outdoor spaces.
- **Angled fabric wrapped panels** surround the stage to reinforce the school's geometry and **provide acoustic softening** in the large open assembly space.







Thank you to the PAT Committee team members for your engagement!  
Your input and feedback has led us to this wonderful proposed design for the new Bunker Hill Elementary School.



**Thank You.....**

# **WELCOME TO BUNKER HILL ELEMENTARY!**

We are committed to providing progressive, meaningful instruction through communication, collaboration and congruent teaching in a caring environment.

**.....Questions?**

**Bunker Hill Elementary School**  
Spring Branch ISD



## **Bunker Hill ES Replacement SD/DD Recommendation**

June 8, 2020

