

Spring Branch Independent School District \ \ Houston, Texas \ \ April 3<sup>rd</sup>, 2019





### **PAT Meeting #03** (3:15pm to 4:45pm)

- Project Recap
- Architectural Process
- Guiding principals
- Priorities
- Proposed Layouts
- PAT Review
- Next Steps
- Meeting Adjourned at 4:45pm

# Project Recap



### PAT 01

02-28-2019

#### KICK-OFF

- Fact Finding Review
- Gather Data
- Establish Guiding Principles



### PAT 02

03-18-2019

#### PROG

- Floor Plan improvements
- Auditorium plan review
- Site Improvements

### PAT 03

04-03-2019

#### SD

- Refine Layout Options
- Acoustical consultant

### PAT 04

04-25-2019

#### SD

- Refine Layout Options
- Volumetric exterior concepts

### PAT 05

05-16-2019

#### DD

- Refine Exterior Design
- Start Interior Design

S U M M E R  
B R E A K

### PAT 06

08-21-2019

#### DD

- Review Overall Design
- Present Exterior and Interior imagery
- Review finishes

### PAT 07

09-04-2019

#### CD 25%

- Review Overall Design
- Review Finishes



## Goal

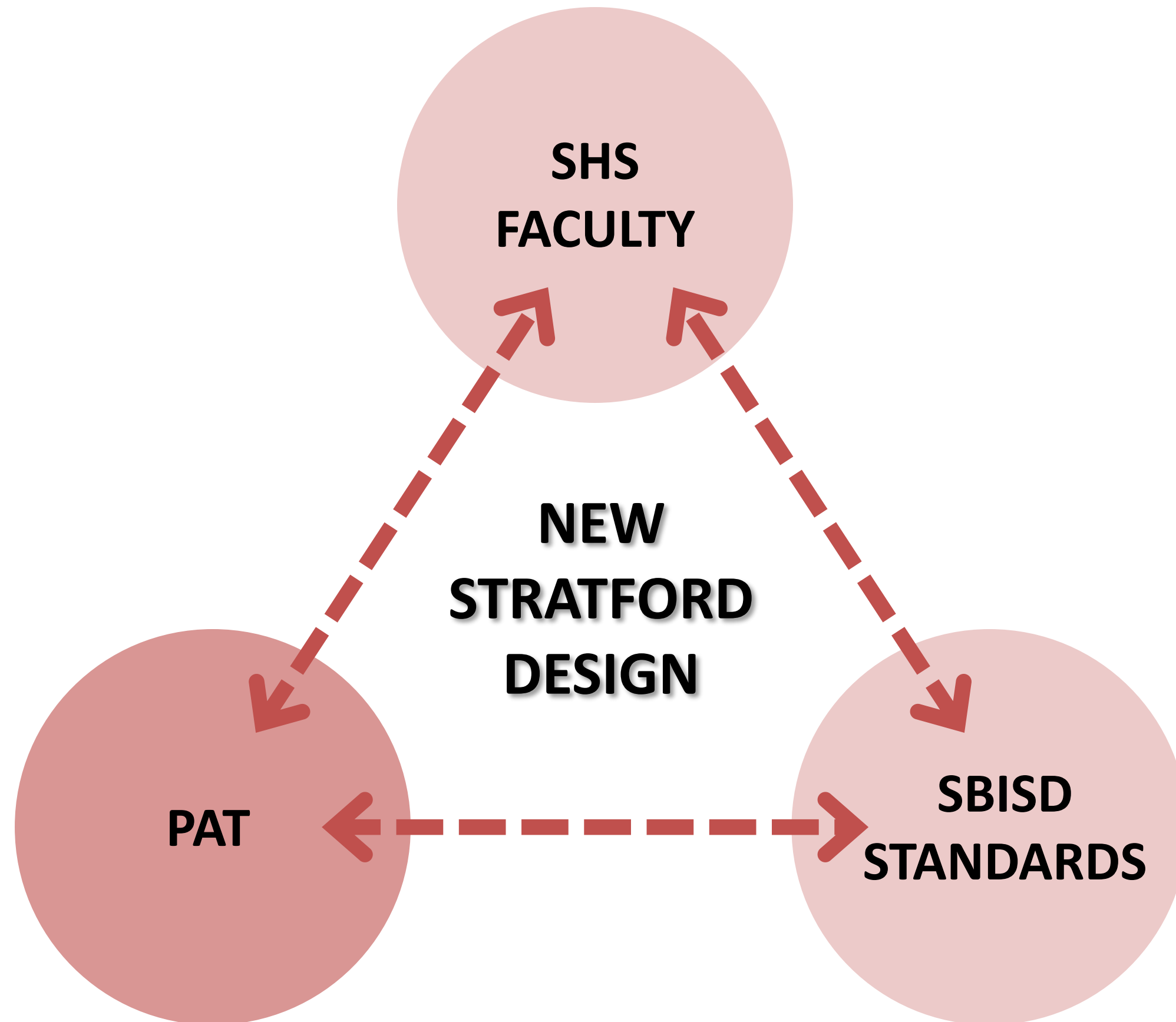
The goal of the PAT is to ensure that parents, staff and community members have the opportunity to take part in the planning and design of new schools. The PAT members will **serve as communicators** to and from the community during the schematic design and development phases of the project and participate in discussions that will lead to recommendations. The PAT concludes its work once construction begins.

## Charge

Each Project Advisory Team's (PAT) members are charged with **providing input into planning and design development** for their school's new construction or major renovation project in the 2017 Bond Program. The PAT will meet as needed throughout the project, from initial planning, through design to the start of construction. Meeting agendas and minutes will be posted on the school's bond project website.

- **New 1,000 seat Auditorium**
- **Mechanical/ HVAC System Upgrades;** for better comfort control in hallways and classrooms
- **Exterior/ Interior Upgrades:**
  - Safety and security (fire alarms, burglar and access control)
  - Meet Education Specifications (replacement of student furniture, evaluate lighting, door hardware, flooring)
  - Exterior power wash, building envelope
- **Site Improvements** (Safety lighting and parking pavement)
- **Roof Systems;** replacement
- **Athletic Upgrades;** (Resurface track, tennis courts, & field refurbishment. Upgrades will be addressed as needed)





- Involved **Community**
- School is a **Community** hub
- No meeting spaces on campus
- Desire **Openness**
- Way-finding** is not organized
- No **open** look and feel
- Remove lockers
- Balance **true needs** of SHS



Meeting Minutes

Project Name: Stratford High School Renovations	Meeting Date and Time:
Project Number: 18148	Meeting Location: Stratford HS
Owner: Spring Branch ISD	Owner's Designated Representative: Kris Drosche
Meeting Description: SHS - Meeting with Principal #1	Report Date and Author: 11/15/2018 Max Buja

- Representatives from Campus: Principal, Social Studies, Science Representatives, & Foreign Language.
- Travis outlined bond program and anticipated project scope. Refurbish, renovate, and replace particular items.
- Replacement parking lot lighting (former solar lighting).
- Major roof replacement project.
- New classroom and teacher furniture (by separate project).
- Turf athletic field (by PBK within project).
- Athletic improvement budget (set aside for improvements now or in future).
- New auditorium, possibly in location of existing auditorium or going in similar location.
- Rusty Hess and SHS Fine Arts Group to be engaged about design process.
- Design parameter for considerations: Detention, Displaced Parking.
- Involved community – parent involvement is high.
- Stratford Playhouse is popular and successful component.
- Music and Fine Arts programs are popular.
- Students ride bus to Guthrie.
- Safety & Security there needs to be a way to work hand in hand with a very active campus.
- The “back” of the school is the “front” and most activity (kid traffic) comes from back parking lots.
- Front is for visitors.
- School is a community hub. Constant activities on campus.
- No meeting spaces on campus; one small conference room (10 people), the auditorium, and the library (the only in-between space). Mid-sized groups 15-20 people will need to go to library. This type of space would be desired by campus for LGI flexible usage.
- Library gets “shut down” from students commonly for group meetings, testing, etc.
- Idea suggested to convert auditorium to LGI and constructing auditorium in alternate location on site.
- Desire to incorporate LGI space and flexible use.
- SHS has a bit of an identity crisis being all “hallways and closed doors”.
- Pulse of community and campus is collaboration, small groups, clubs, and learning mentality.
- Desire openness and flexible learning and community spaces.
- Look at entry and entry identification in back where students/campus enter.
- Less lockers or no lockers is desired. 50-75 total lockers currently utilized.
- SHS has many teachers that float which is a burden on entire campus.
- Close off entire library? Large group areas inside library?
- SBAI, Spring Branch Academic Institute will need to be defined and PBK educated about this program.
- Athletic facilities in dire need of renovations.
- Both gyms and courts are in poor shape as are locker rooms.



flooring needs to be looked at and was noted to be in poor condition.  
select hallways – look at versus usable SF and environment.  
not organized and ideal; would appreciate new signage.  
Finance, Academy of Science and Engineering.  
if a “Club” important to potential and current students attending.  
Math are not adjacent to one another – look at program and layout of existing

lubs are numerous and well participated in; however a clear lack of storage on

against community feel – departments are all “isolated” and rarely interact.  
and feel – too many interior hallways.  
is to create openness to improve benefit ‘look and feel’ doors facing common areas  
not others (such as social studies).  
ys and hall entries/doors to be more flexible.  
rovide multiple small flex areas and collaboration points with small groups, tables,

blems are prevalent. Electrical has gone down to half of school multiple times  
in gym have gone out multiple times.  
room conditions vary greatly.  
g with T&B should be reviewed.  
iphy (related to art) journalism and business – Guthrie Center handles large  
h as cosmetology.  
ot organized ideally.  
‘If you could make a change at SHS what would it be?’  
ition corridors and remove lockers to free up usable space.  
e enlarged meeting area on site for use by various groups/sizes. Move voting  
r? Signify prominence.  
ase positive reasons to visit SHS reaching lower socio-economic constituency (with  
es, programs, group exercises, language, etc).  
al collaborative spaces for students to harbor ownership and responsibility.  
cing true needs of SHS in all areas of school vs excessively equipped auditorium.  
ure to be appropriate for collaboration, reconfiguration.  
ice security improvements interior and exterior to be effective and thoughtful to work  
w/campus.

t up with same group and potentially additional individuals.





- Playhouse season ticket holders
- Auditorium is central to campus
- Need an LGI
- Need offices and storage
- Floating teachers
- Secure main lobby
- Feels too institutional
- Create Counselor suite



Meeting Minutes

Project Name: Stratford High School Renovations	Meeting Date and Time:
Project Number: 18148	Meeting Location: Stratford HS
Owner: Spring Branch ISD	Owner's Designated Representative: Kris Drasche
Meeting Description: SHS - Meeting with Principal #2	Report Date and Author: 1/22/2019 Max Buja



Stratford HS Campus Review

1. Introductions
2. Travis, Kris – P&C
3. Chad, Principal
4. D. White, Counselor
5. Pam, Assoc. Principal
6. Lynne, Director SB Institute
7. Valerie, 9<sup>th</sup> Gr Principal
8. David, Director Tech Theater
9. Kristi Schaper, CTE Teacher
10. William Hall, Math & Engineering
11. Shelby, Librarian
12. Project Scope-Roof, Turf Field, Auditorium, Major Renovations & Interiors work.
13. Classroom Furniture (Future Separate Project).
14. Current 750 seat auditorium. Request and need to keep current auditorium seating during construction.
15. 500 participants in current programs.
16. Previous events there have had folding chairs brought inside the space to allow for additional seating.
17. Plays are “extra-curricular” because of other programs that students participate in.
18. Heavy participation from community.
19. Theater, Orchestra
20. Several hundred season ticket holders.
21. Gala fundraiser this week for Theater Booster Club (multiple enormous events) compete against varsity football events.
22. Auditorium is central to campus use and highly used.
23. UIL hosted events – every UIL events for one act plays and large events.
24. No current multipurpose space at SHS. Use auditorium, library, or dining space therefore auditorium is commonly occupied.
25. Parent meetings that coincide with production, rehearsals, or other events. The set is there and this results in limited usable space within auditorium.
26. Medium sized space ideally would house 100-150 people (multi-use space).



ce of CTE but has been asked to leave – he has been moving around  
and the Ag Center. ROTC, Culinary, Film, Cosmetology, Film Making,  
antage of all at Guthrie Center.  
for engineering dept.  
d requires replacement of select equipment.  
ve loop was added in previous renovation and while small made a

as – ramp is on the East side only 7 buses used limited bus for main  
buses throughout the day for other programs will use the front  
rop off on Fern Drive.  
ed except front door (as of last year) so front is active and students  
ad to walk around building to front door.  
problematic – no temporary classrooms except for 3<sup>rd</sup> rubber gym  
al needs. To get to rubber gym you have to go outside then back  
hat line to protect pedestrians from main building out to the 3<sup>rd</sup>  
unlocked. Canopy would be wanted/helpful. All PE classes are  
PE students are affected.  
th a gap in between (one class)  
rpose room, frequently used, commonly shut down. Technology  
eacher luncheons, students eat.  
library varying use but up to almost 100. Fire Marshal limit at 72.  
testing, and regular testing.  
ias 3 classrooms and a small work based utility area. Pretty old and

or severe autistic only at select campuses throughout district.  
ed.  
y, of varied age, and poorly supports student useage and function.  
osed off with many doors and hallways constricting spaces.  
hout campus to help wayfinding, campus pride, organization.  
s to make the school less institutional  
tc. scattered throughout building.  
ar, 90 degree turns can we “SOFTEN” the campus?  
it SHS:  
ited / LGI for larger group  
pace, & Storage Added

nd Intimate Auditorium Integrated in Campus (Not on an Island)  
ig Auditorium – capture smaller targets and needs throughout


- Better clearly identify where you enter Stratford. Large auditorium with 3 larger group spaces.
- Need added storage. Get rid of or use multiple balconies.
- Classrooms and LGI added.





On behalf of the entire **PRK** Team, we thank you for this opportunity!

*"Committed to Learning. Working Together. Enriching Lives."* - SHS



### Stratford High School Additions and Renovations

#### Rating of the Fact-Finding Items

<u>A</u> Heavy Community involvement	<u>B</u> School lacks gathering areas
<u>A</u> School is a community "hub", constant activity on campus	<u>A</u> Incorporate large and medium instructional areas
<u>A</u> Auditorium central to campus, highly used	<u>B</u> Desire openness and interconnectedness across campus
<u>A</u> Performing arts program very popular, equal to football	<u>A</u> Provide flexible and collaborative areas
<u>B</u> Several hundred season ticket holders for the Playhouse	<u>A</u> Create spaces that harbor ownership and responsibility
<u>B</u> UIL hosted events in the Auditorium	<u>B</u> Provide flexible furniture to enhance collaboration
<u>A</u> Front entry lacks presence towards street	<u>A</u> Lack storage across campus (see below)
<u>A</u> Back entry is heavy used (students), front only visitors/ parents	<u>A</u> Need additional admin offices
<u>A</u> Balance security with campus openness and student flow	<u>A</u> Create counselor suite
<u>A</u> School doors locked all day	<u>A</u> Remove lockers, underutilized (50 to 75 units used)
<u>A</u> No secure vestibule	<u>A</u> 8 teachers are currently "floating"
<u>B</u> 3rd gym/ training room exterior access only	<u>C</u> SBAI (Spring Branch Academic Institute) specific needs
<u>B</u> School lacks clear way-finding	<u>A</u> Several HVAC issues across the campus
<u>Define school academies - not in this scope</u>	<u>A</u> Technology upgrades needed across campus
<u>B</u> Parents and visitors "lost" in campus	
<u>A</u> STORAGE FOR SPORTS (STUDENTS EQUIPMENT) ON MAIN FLOOR (Eg. GOLF CLUBS) - THEY HAVE TO USE THEM AT THE END OF THE SCHOOL DAY.	
<u>A</u> Accessible to all (auditorium /cafeteria etc)	
<u>B</u> Better parking out in the front of the building. There is never open parking for parents for pick up.	
<u>A/C</u> Fence around parking areas (Jr/sr lots)?	
<u>B</u> Staircases - some open some closed. ↳ better staircase in the cafeteria area - would look & function so much better	

#### Additional Comments


A Technology & electrical etc

go together

perhaps join storage / make a new space with the third gym (make it secure)

use to create classrooms

A "new" b/c they could "go anywhere" comment  
"If SBAI does not utilize the SPS staff why do they not use the space @ SPS? There is space (or was) at that campus & then the students are with their age peers & bus costs. Just curious..."



11 Greenway Plaza  
22nd Floor  
Houston, Texas 77046  
800.938.7272  
PRK.com

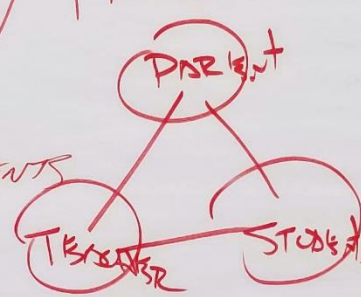
#### Priority Legend

On the left of each Fact-Finding statement, please rate from A to B (A being the highest priority and C being the lowest priority)

A = High Priority  
B = Medium Priority  
C = Low Priority

WHAT MAKES SHS<sup>SI</sup> STRATFORD?

- COMMUNITY/FAMILY  
"BLOOD RUNS GREEN"
- SUPPORT  
TEACHERS/STAFF/PARENTS  
COMMUNITY
- SMALL TOWN IDENTITY  
ALUMNI GROWTH/PRESENCE  
\*WELCOMING BACK
- FAMILY TIES THROUGHOUT SBISD
- APPROACH: LONG TERM, LONG LASTING
- GOING TO HAVE LUNCH NEXT YR → SPACE





\* <sup>STRAT</sup> CAREFUL w/ UTILIZATION OF CIRC.  
SPACES - HEAVILY TRAFFICKED STUDENTS,  
NOT A "ROOM" BUT GRAPHICS/FLEXIBILITY?

\* GET CONDITIONED AIR INTO CIRC.  
SPACE CURRENTLY NOT

\* LIBRARY SPACE CAN BE RE-PROGRAMMED  
OR MORE EFFICIENTLY USED AS FLEX  
& COLLABORATION SPACE - MORE COST EFFECTIVE?

\* SNACK BAR NOT UTILIZED - STORAGE  
NOW - CAN BE RECAPTURED.

\* LAYERED SAFETY  
CAMPUS WIDE - INSIDE & OUT

\* REVISE / REMOVE / LESS EMPHASIS  
ON "SPECIAL FOCUS ON FINE ARTS"  
(GUIDING PRINCIPLE)

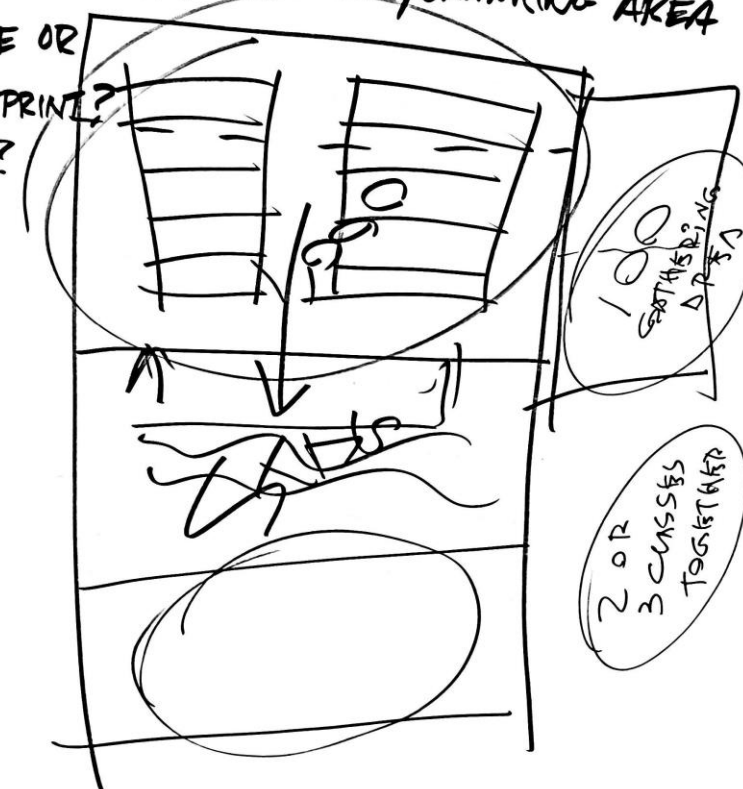
\* SEPARATE ACADEMIES FROM "WAY-FINDING"  
SIGNAGE VS SPACES & COLLABORATION

\* ATHLETIC IMPROVEMENTS IDENTIFIED

\* IDENTIFY BOND SCOPE PREREQUISITES  
w/ PRIORITY SUMMARY

\* AUDITORIUM REPLACEMENT VS 2ND "NEW"  
BUILDING SET IN STONE? BOND ITEM

\* LOOK AT SECONDARY SMALL LGI / GATHERING AREA  
w/ SAME OR  
SIM. FOOTPRINT?  
OCC. ± 100?



Do you agree with the established Guiding Principles?

0 2 5

Yes



100%

No



0%

Do you agree with the established Priorities?

0 2 5

Yes



92%

No



8%

Are we going in the right direction for the Stratford High School Additions and Renovations Design after PAT 02?

0 2 7

Yes



81%

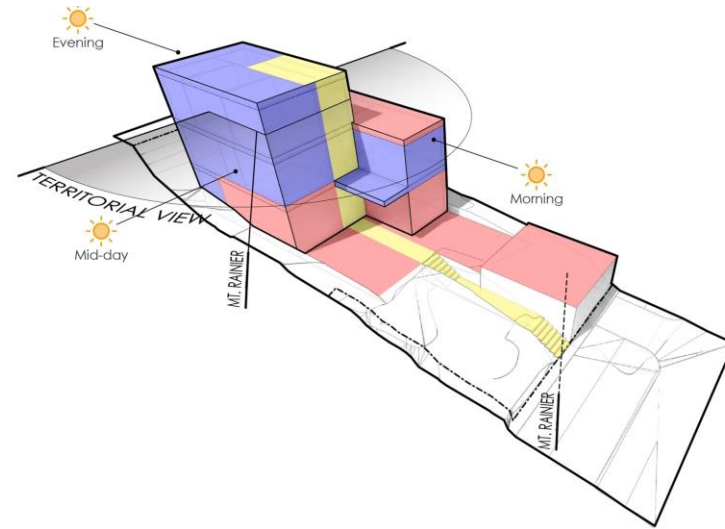
No



19%



# Architectural Process



CONCEPTUAL DESIGN

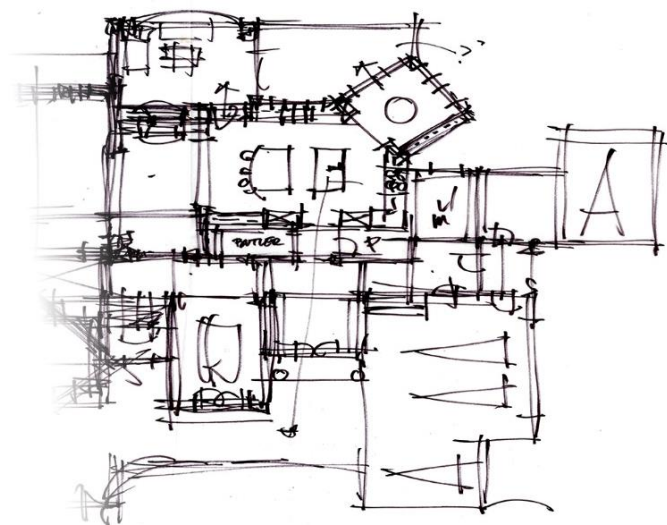
SCHEMATIC DESIGN

DESIGN DEVELOPMENT

CONSTRUCTION DOCUMENTS

CONSTRUCTION BIDDING

CONSTRUCTION ADMINISTRATION



# Guiding Principles





**Community Involvement for Success**

Neighborhood Institution that offers opportunities to all and hosts a wide arrange of community engagements.

**An Environment of Academic Excellence**

Uphold and evolve higher educational performance through the introduction of versatile and flexible gathering areas.

**A Place for Everyone**

Create an environment that celebrates everyone and provides accessibility to all.

**Safety Fosters Success**

A secure campus that fosters an environment where students, teachers and staff can succeed.

**A Culture of Tradition and Pride**

Maintain the traditions that provide a sense of pride and honor to the school and community.

# Priorities



## Priority A

1. Campus Security
2. HVAC/ Tech Campus Enhancement
3. Gathering Areas, Openness and Interconnectedness
4. New Auditorium/ Community “Hub”

## Priority B

1. Remove Lockers
2. “Floating” Teachers Issues
3. Lack of Storage
4. Counselor Suite

## Priority C

1. Additional Admin Offices
2. Way-finding/ Academies
3. Fix Stairs and Elevator
4. SBAI needs

### **PAT #03**

- 1. Main Entry Vestibule/ 3<sup>rd</sup> Gym Secure Area**
- 2. Student Commons**
- 3. New Auditorium/ Repurposed Areas**

### **PAT #04**

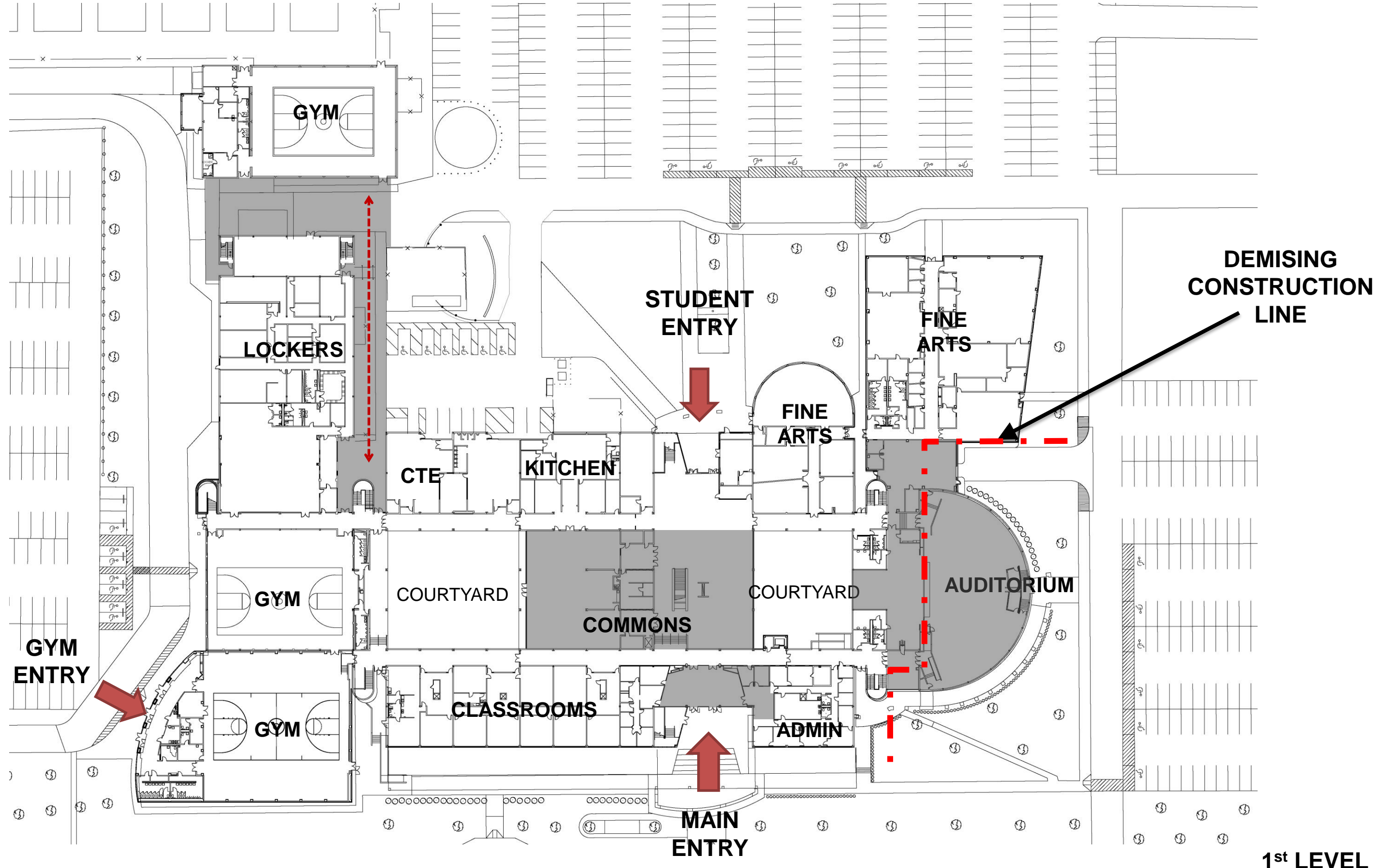
- 1. Classrooms/ Academies**
- 2. Flex/ Corridors**
- 3. Offices/ Counselors**

# Proposed Layouts



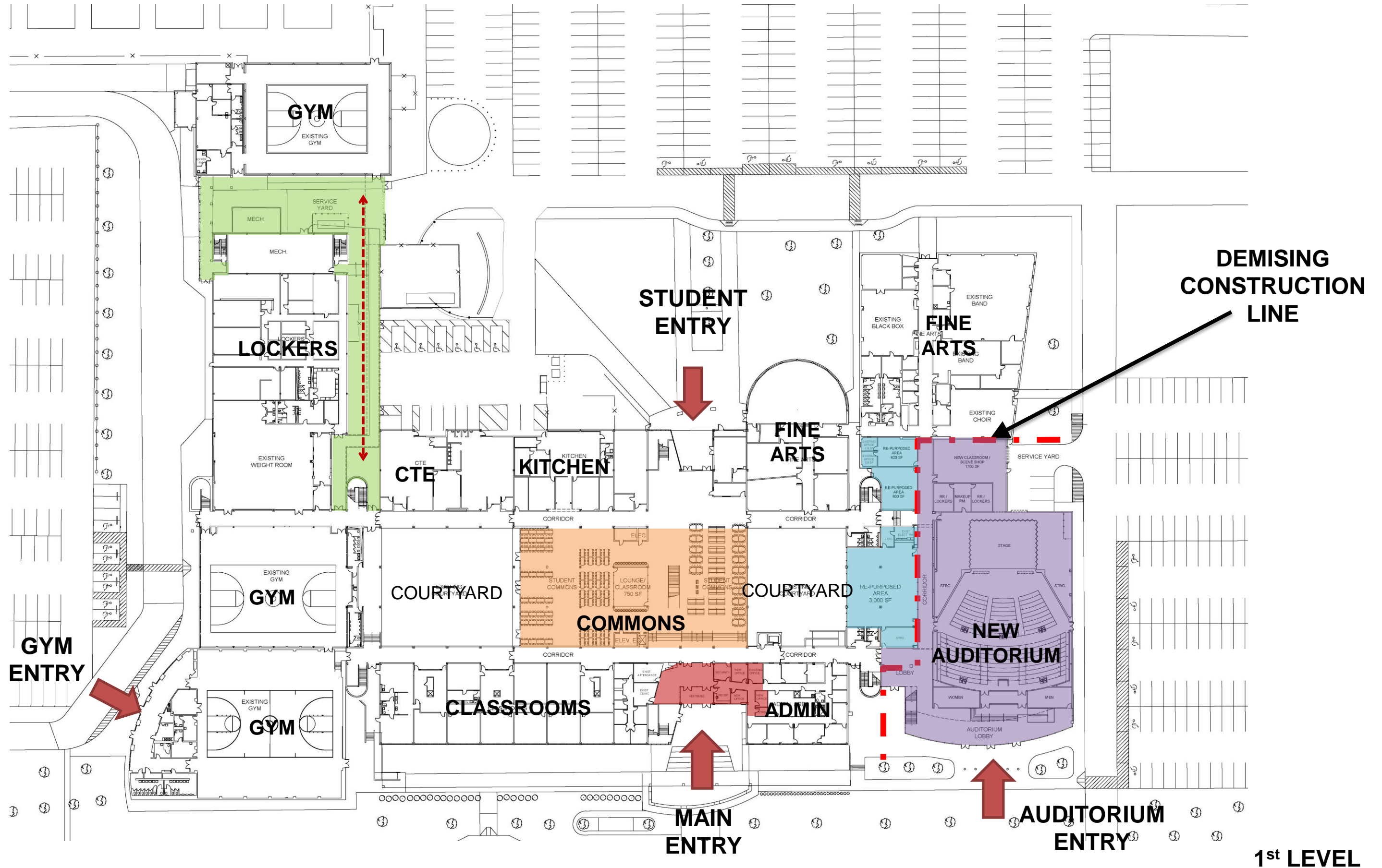
# Stratford High School Additions and Renovations

## Existing 1<sup>st</sup> Level Floor Plan



# Stratford High School Additions and Renovations

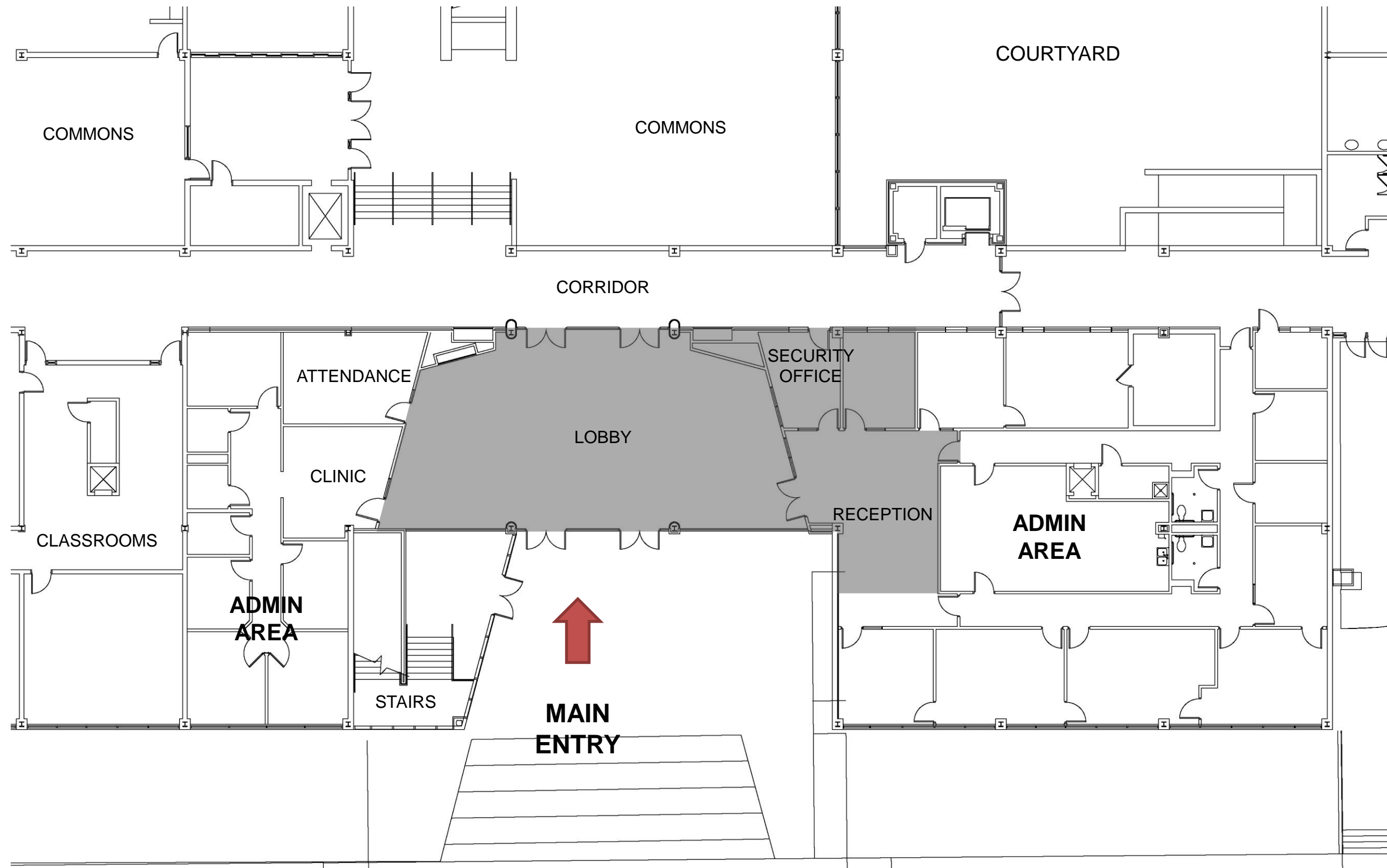
## Proposed 1<sup>st</sup> Level Floor Plan Layout





# Stratford High School Additions and Renovations

## Existing Main Entry





# Stratford High School Additions and Renovations

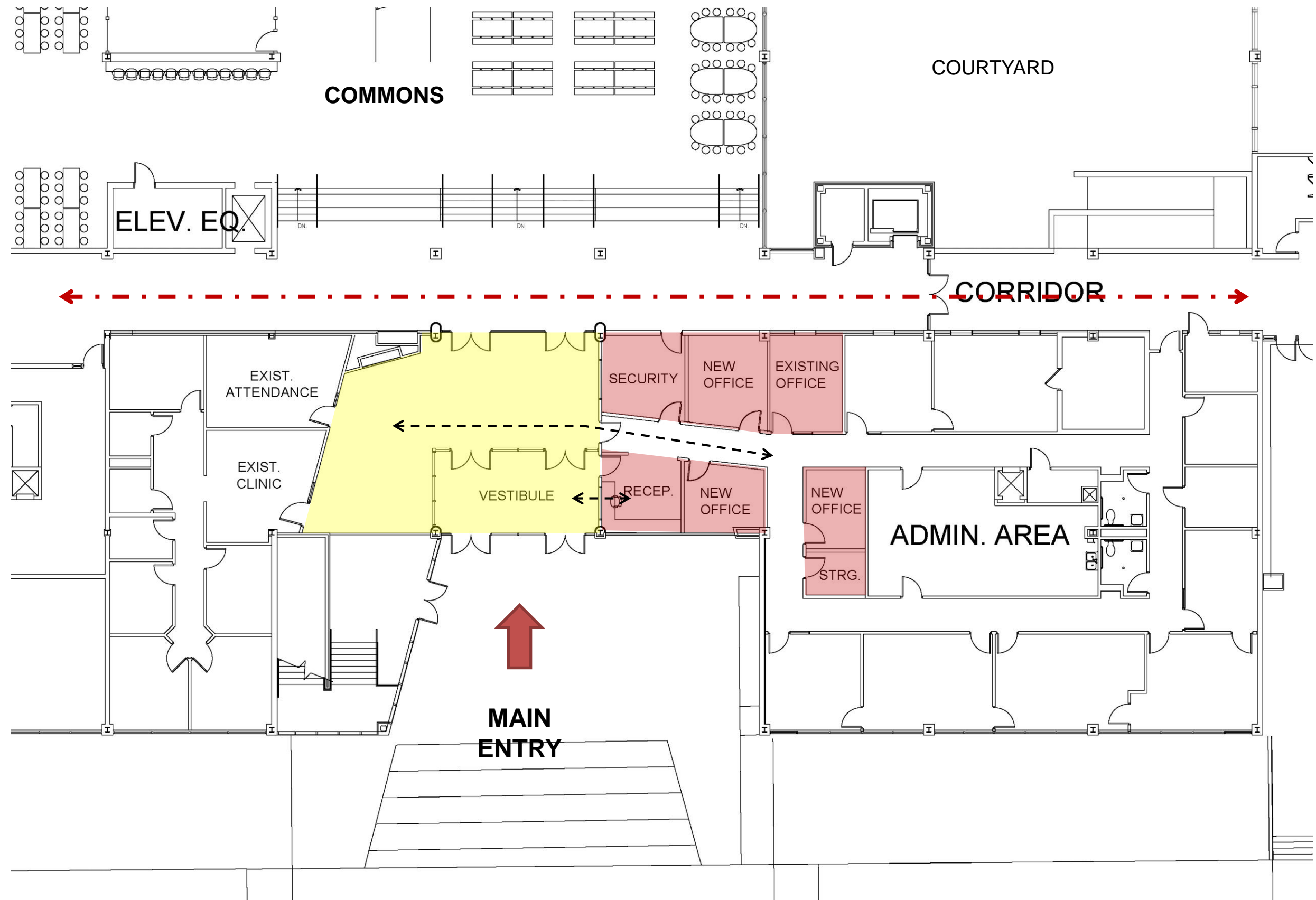
## Existing Main Entry - Photos





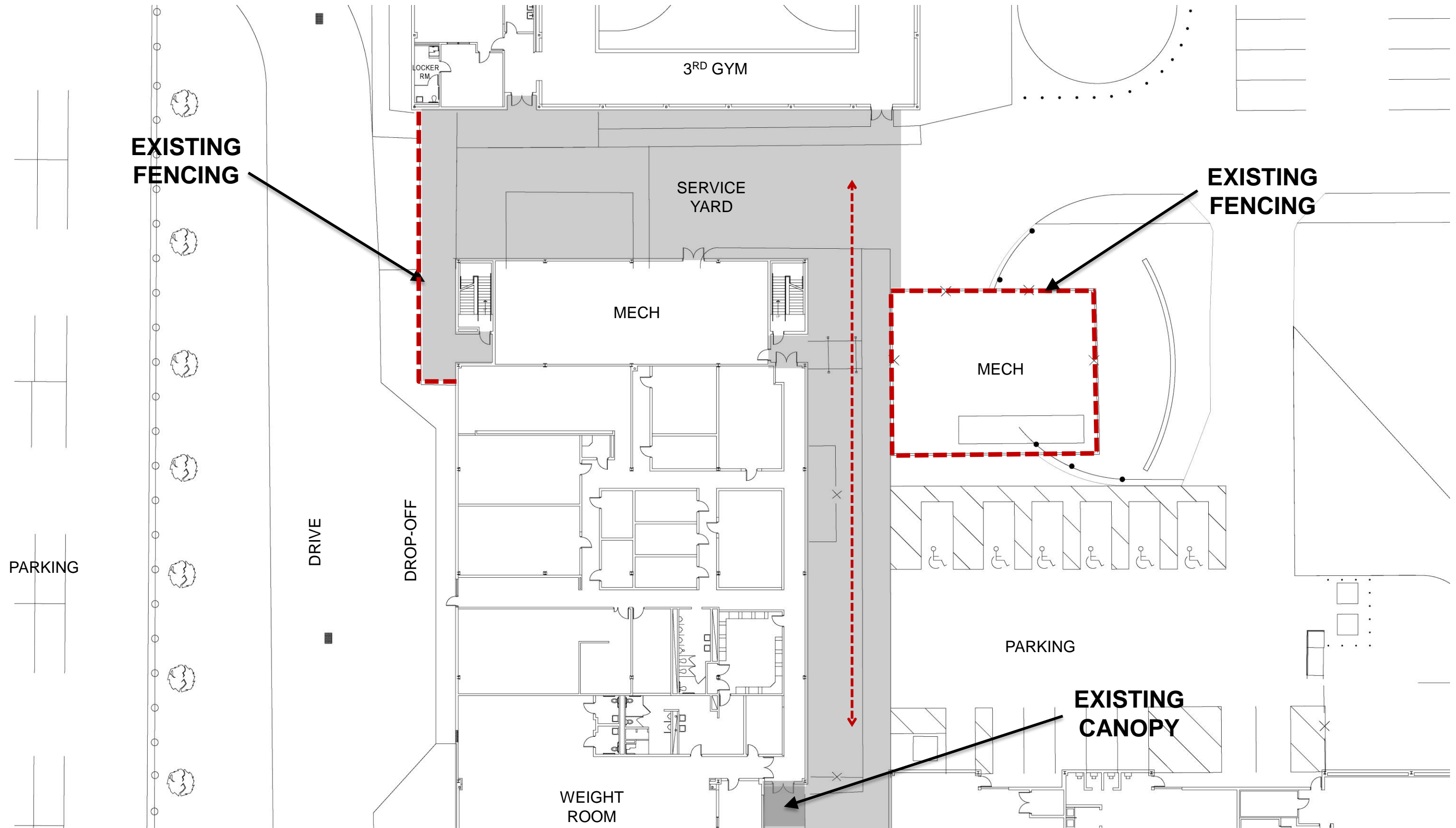
# Stratford High School Additions and Renovations

## Proposed Floor Plan Layout – Main Entry



# Stratford High School Additions and Renovations

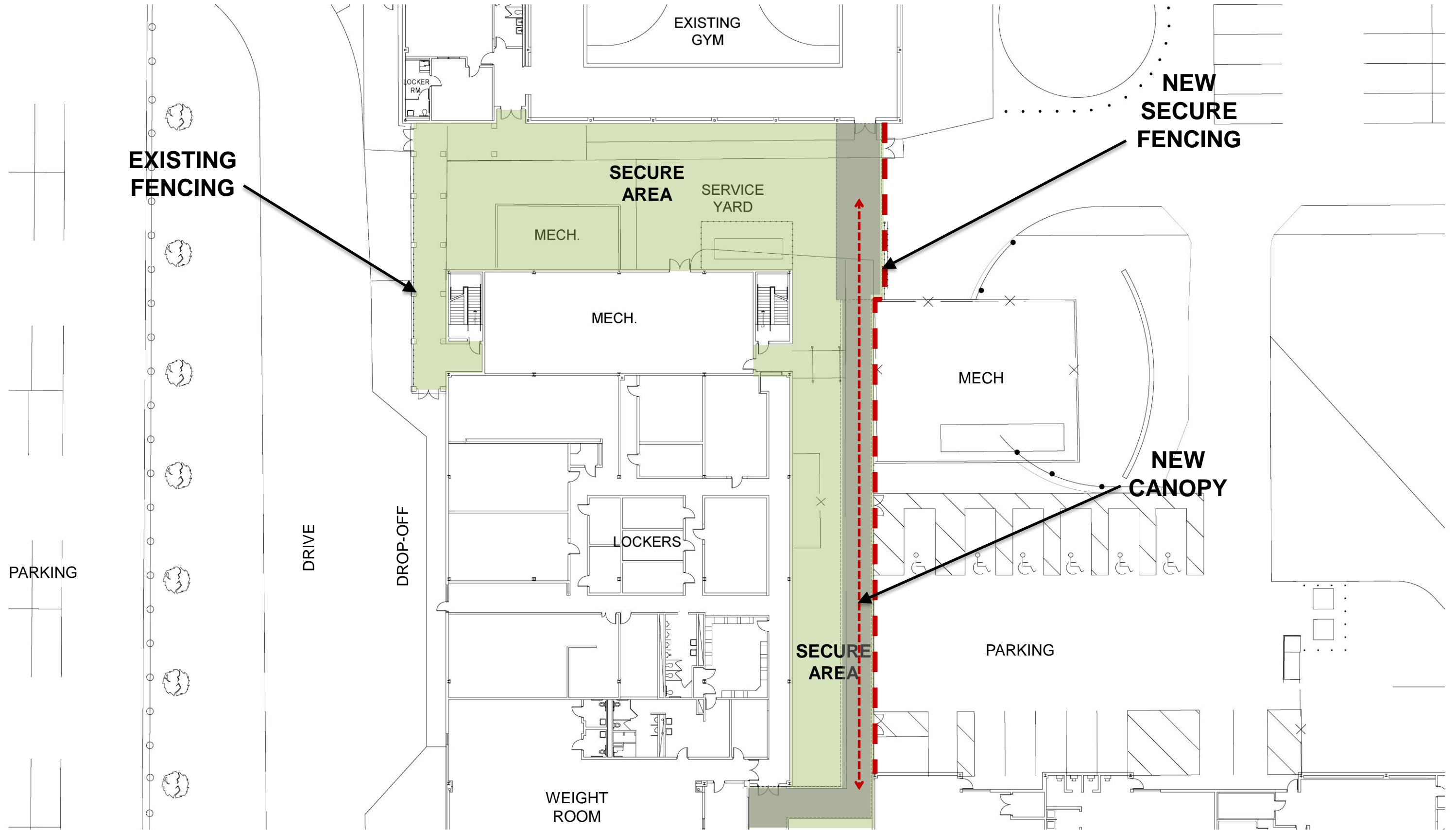
## Existing 3<sup>rd</sup> Gym Area





# Stratford High School Additions and Renovations

## Proposed Floor Plan Layout – 3<sup>rd</sup> Gym Secure Area



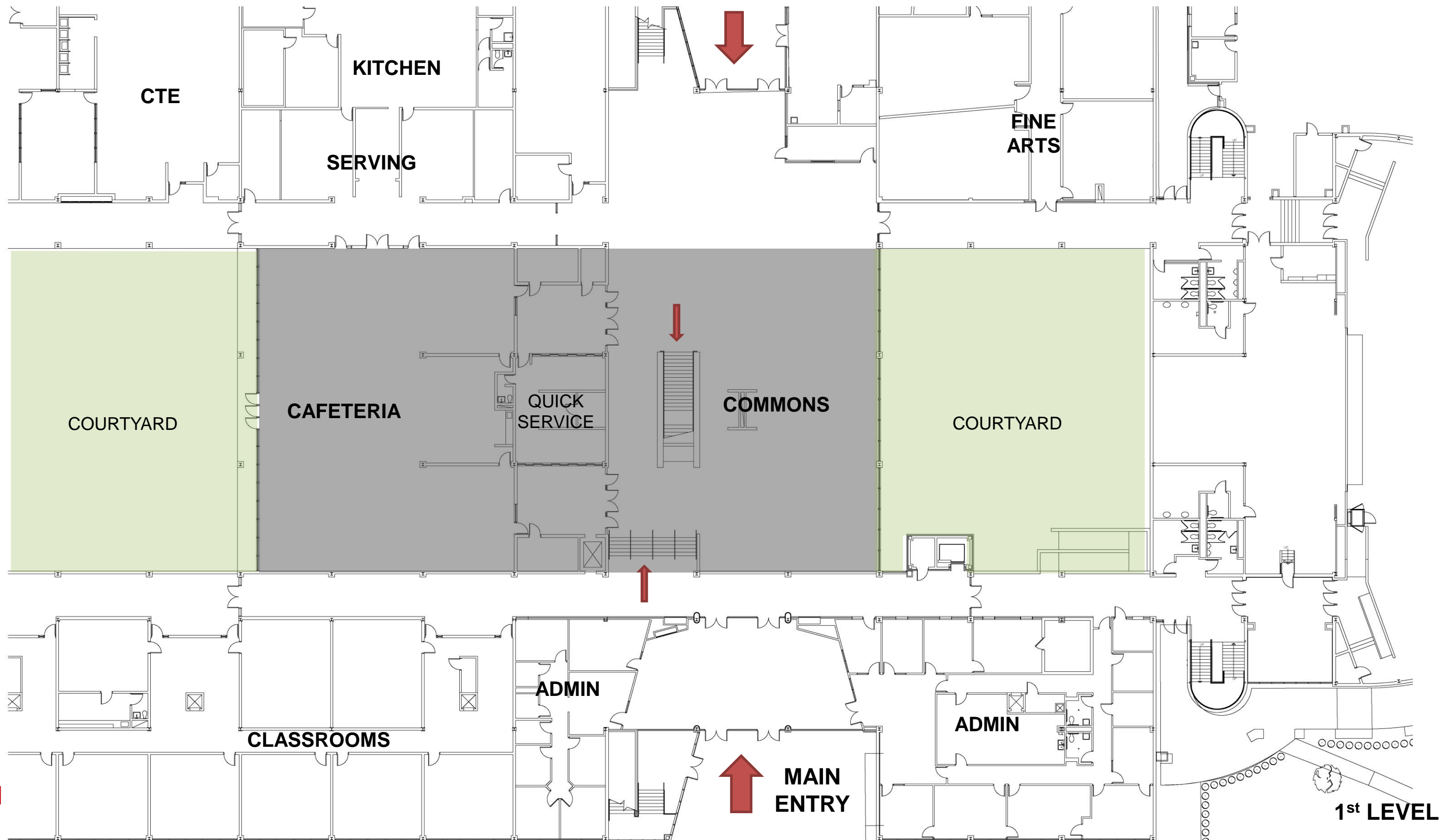






# Stratford High School Additions and Renovations

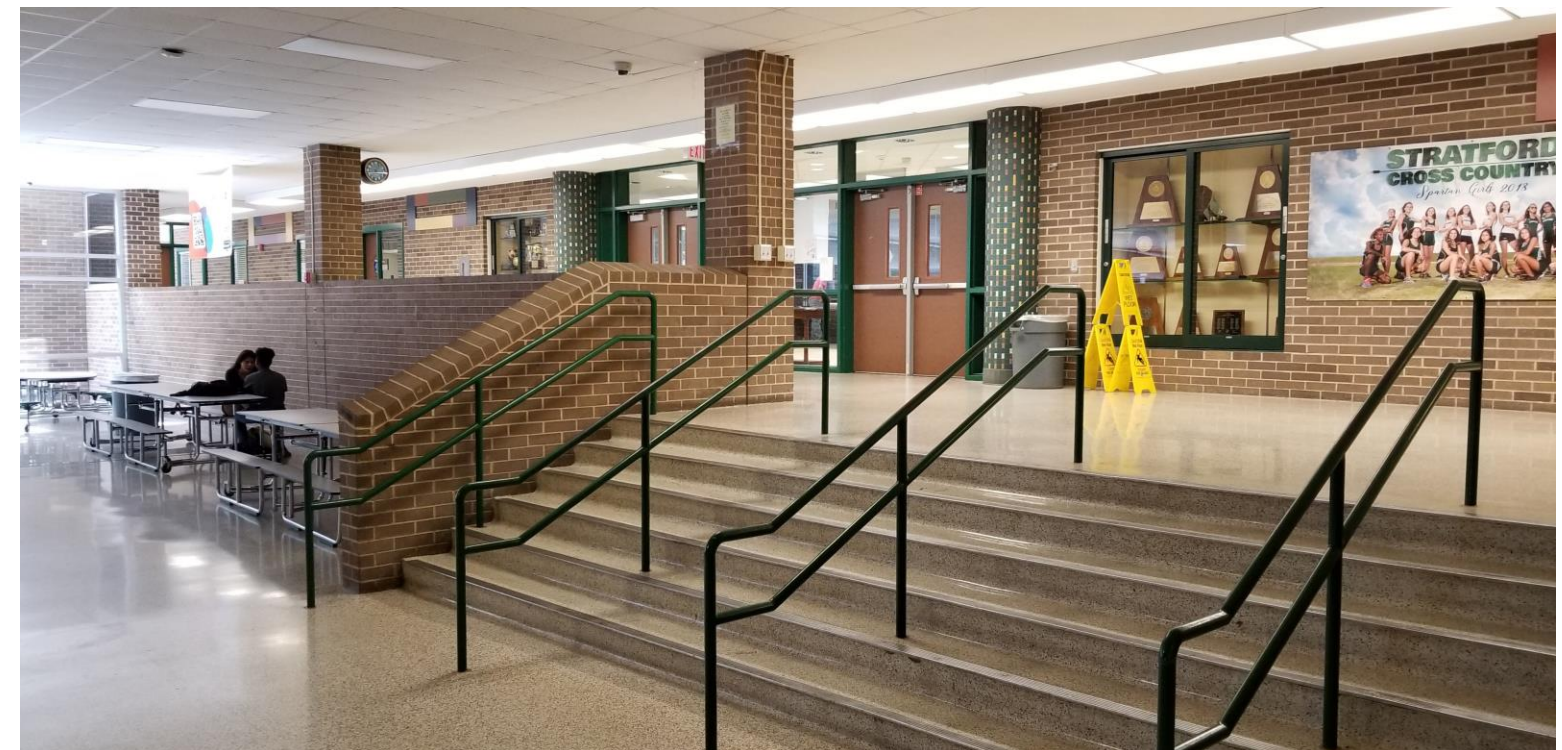
## Existing Student Commons





# Stratford High School Additions and Renovations

## Existing Student Commons - Photos





# Stratford High School Additions and Renovations

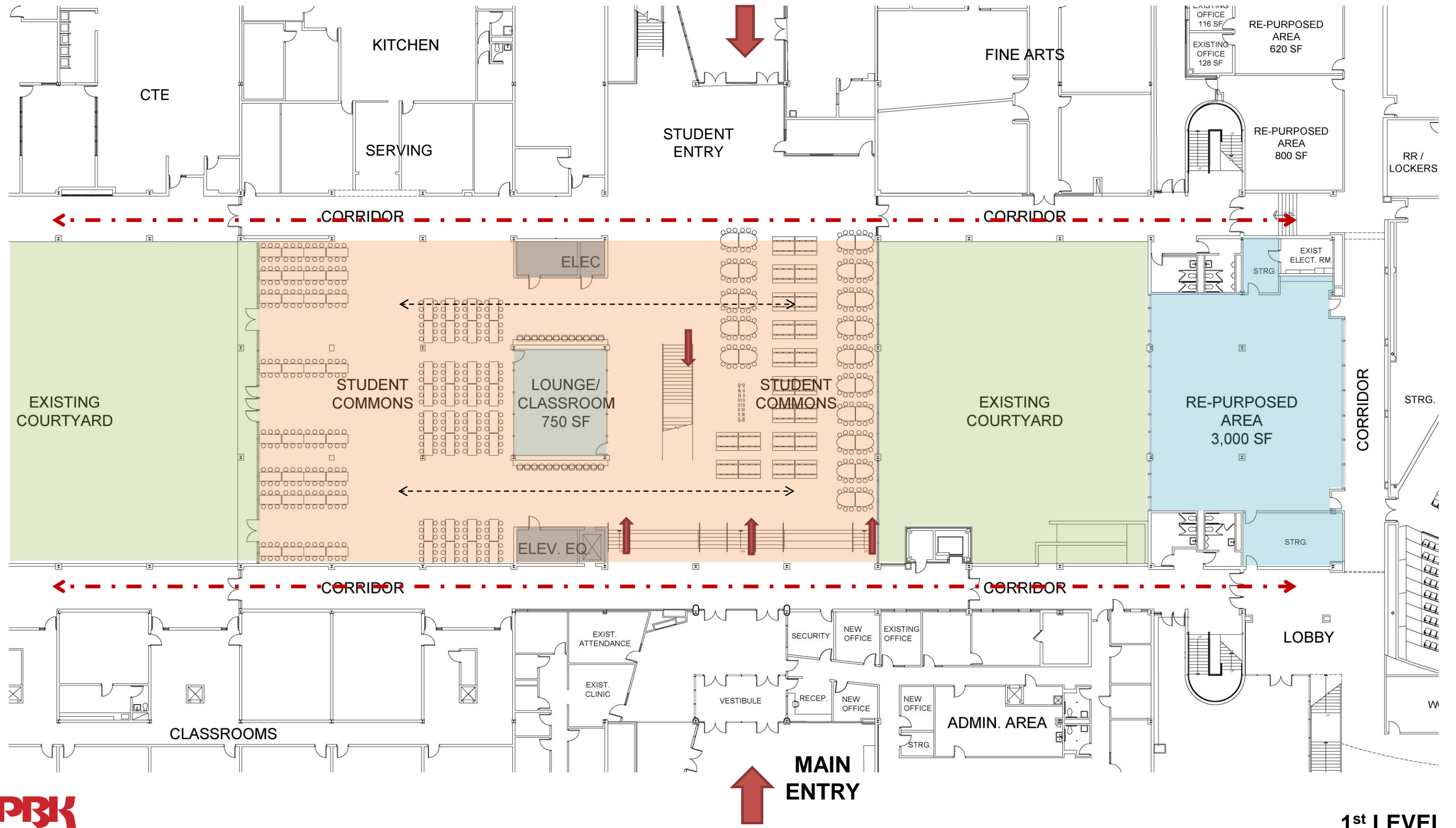
## Existing Student Commons - Photos





# Stratford High School Additions and Renovations

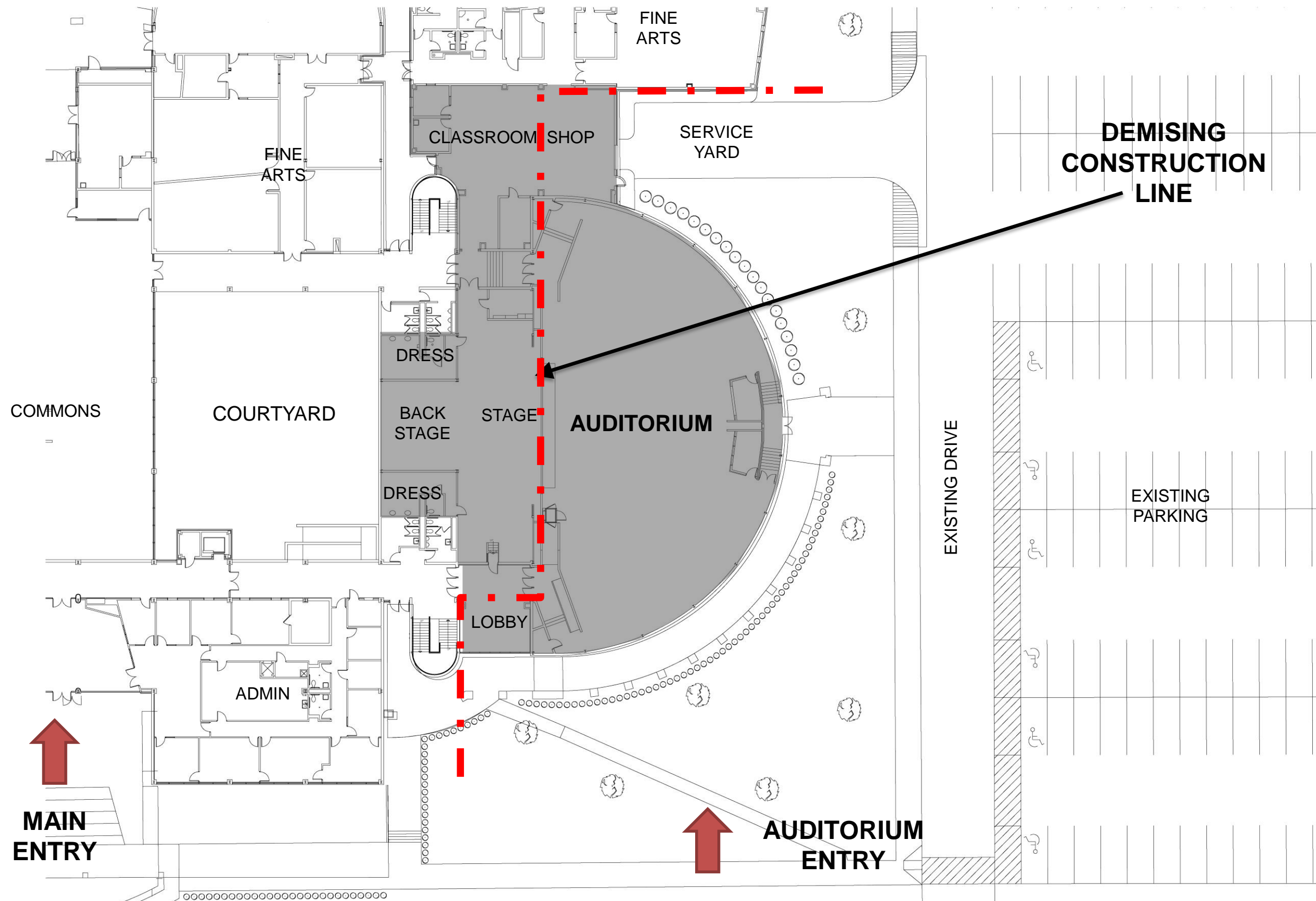
## Proposed Floor Plan Layout – Student Commons





# Stratford High School Additions and Renovations

## Existing New Auditorium



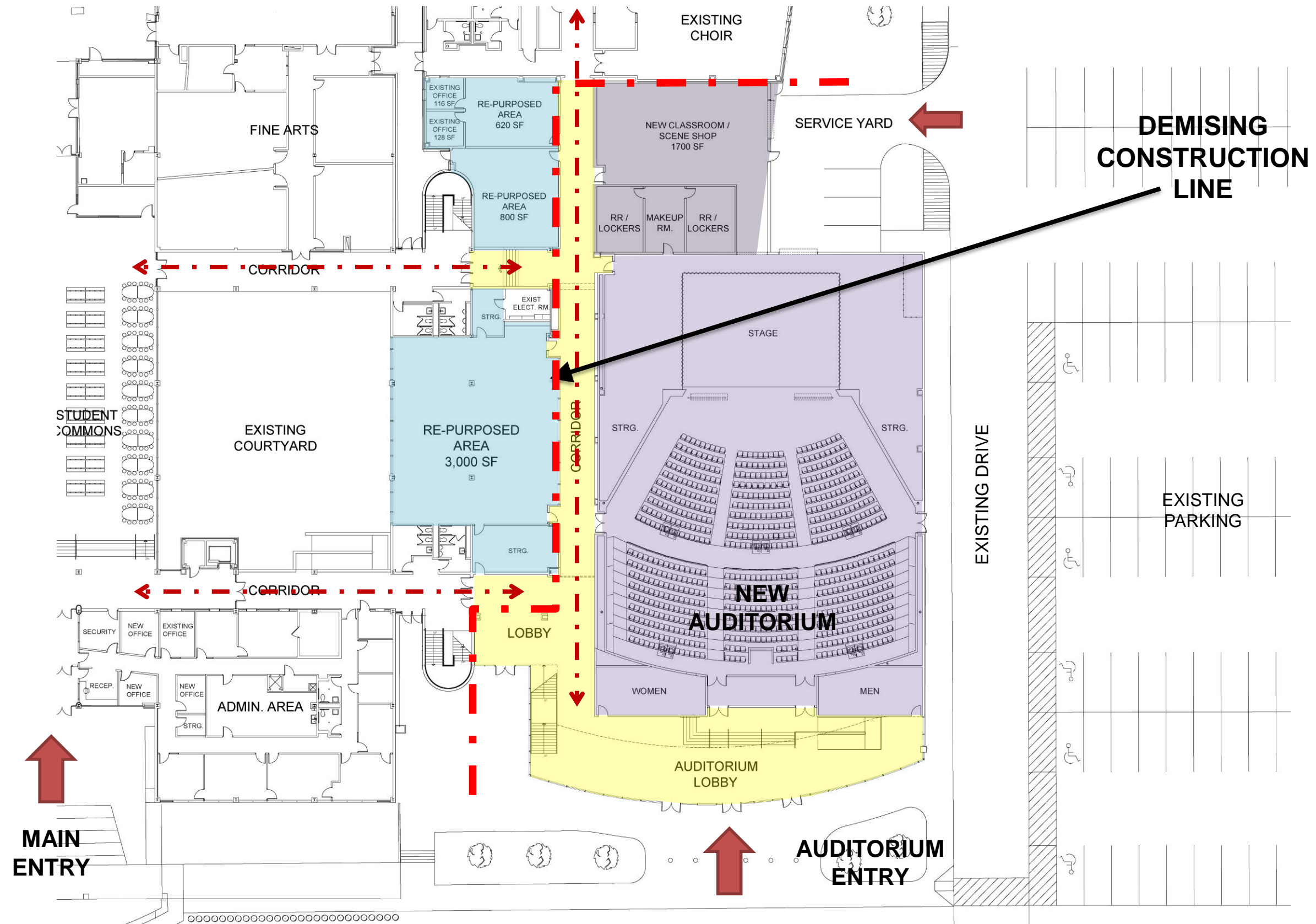






# Stratford High School Additions and Renovations

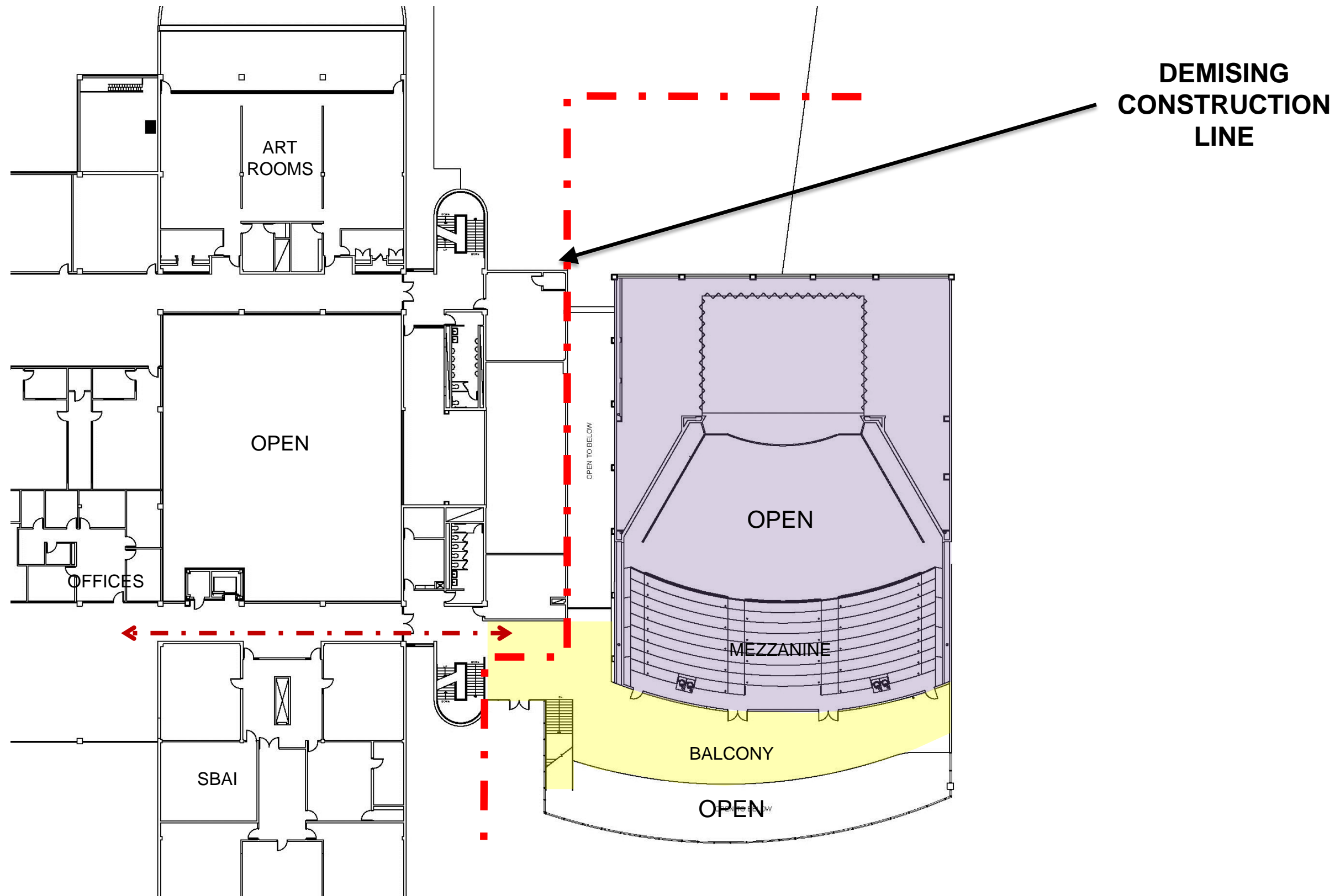
## Proposed Floor Plan Layout – New Auditorium





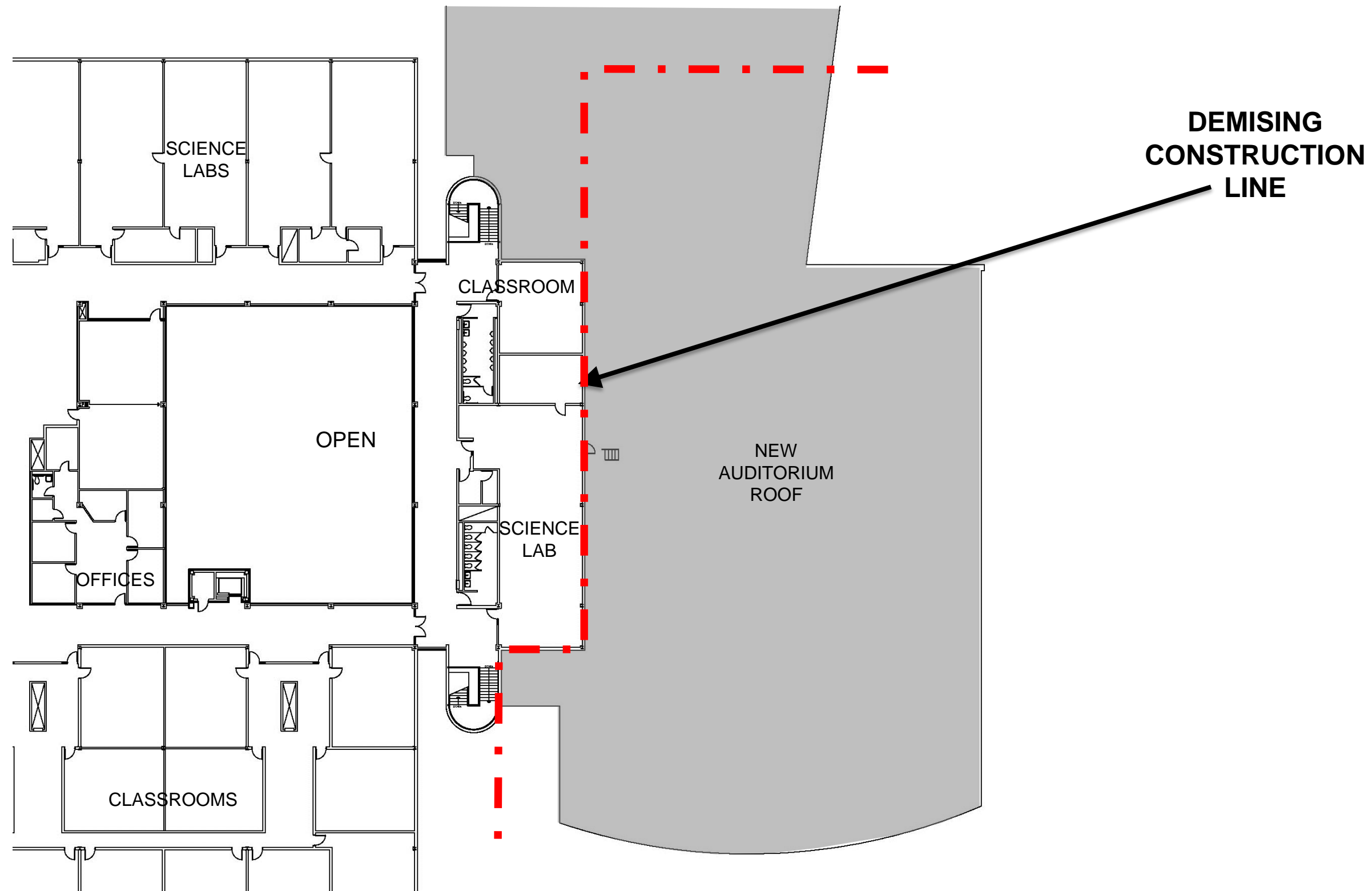
# Stratford High School Additions and Renovations

## Proposed Floor Plan Layout – New Auditorium



# Stratford High School Additions and Renovations

## Proposed Floor Plan Layout – New Auditorium



# PAT 03 Review



- Log in to: **slido.com**
  - Enter Code: **Y535**
- 
1. **Do you approve of the security layout for the main lobby entry and the 3<sup>rd</sup> gym secure area?**
  2. **Do you approve of the layout for the Student Commons?**
  3. **Do you approve of the layout for the New Auditorium?**

- Log in to: **slido.com**
- Enter Code: **2714**

**1. Are we going in the right direction for the Stratford High School Additions and Renovations Design after PAT 03?**

# Next Steps





### PAT 01

02-28-2019

#### KICK-OFF

- Fact Finding Review
- Gather Data
- Establish Guiding Principles



### PAT 02

03-18-2019

#### PROG

- Floor Plan improvements
- Auditorium plan review
- Site Improvements



### PAT 03

04-03-2019

#### SD

- Refine Layout Options
- Acoustical consultant

### PAT 04

04-25-2019

#### SD

- Refine Layout Options
- Volumetric exterior concepts

### PAT 05

05-16-2019

#### DD

- Refine Exterior Design
- Start Interior Design

S U M M E R  
B R E A K

### PAT 06

08-21-2019

#### DD

- Review Overall Design
- Present Exterior and Interior imagery
- Review finishes

### PAT 07

09-04-2019

#### CD 25%

- Review Overall Design
- Review Finishes



**Thank You!**

